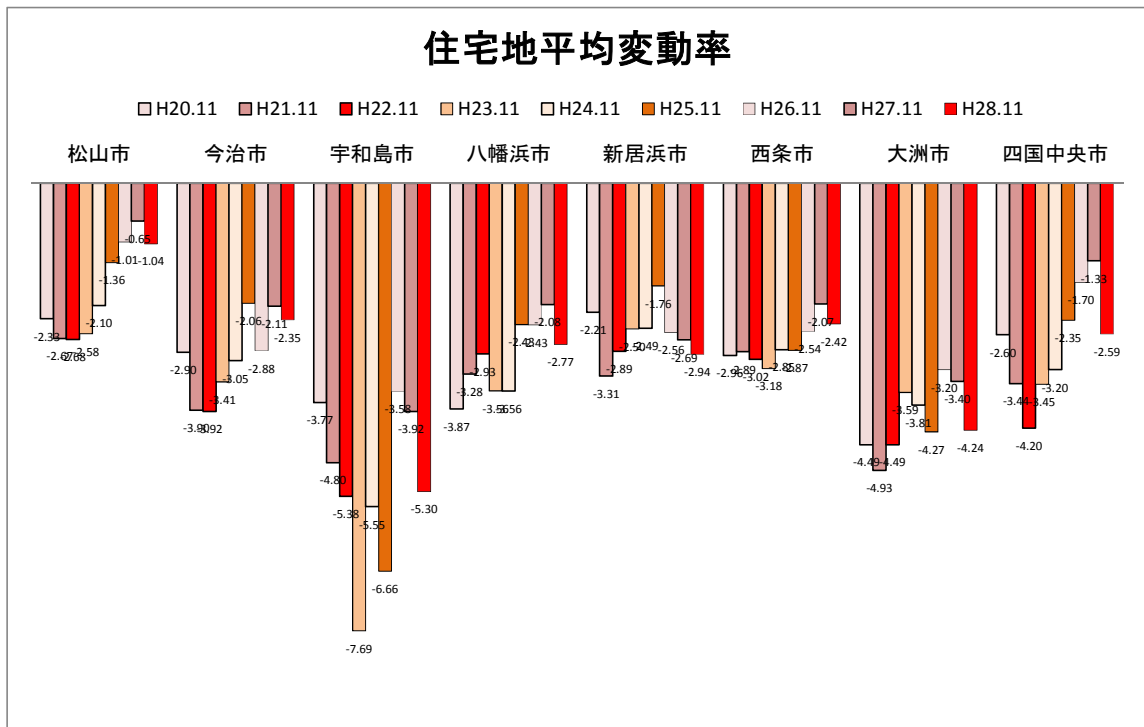
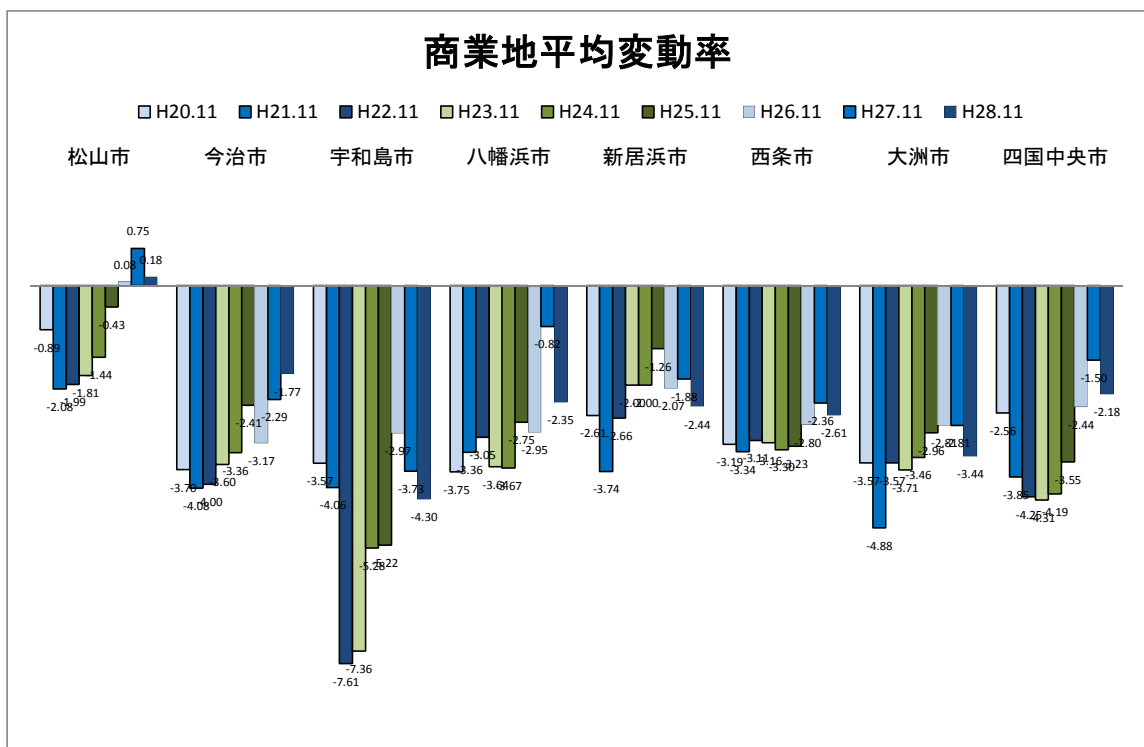


| 住宅地平均変動率 | 松山市 | 今治市 | 宇和島市 | 八幡浜市 | 新居浜市 | 西条市 | 大洲市 | 四国中央市 |
|----------|-------|-------|-------|-------|-------|-------|-------|-------|
| H20.11 | -2.33 | -2.90 | -3.77 | -3.87 | -2.21 | -2.96 | -4.49 | -2.60 |
| H21.11 | -2.67 | -3.90 | -4.80 | -3.28 | -3.31 | -2.89 | -4.93 | -3.44 |
| H22.11 | -2.68 | -3.92 | -5.38 | -2.93 | -2.89 | -3.02 | -4.49 | -4.20 |
| H23.11 | -2.58 | -3.41 | -7.69 | -3.56 | -2.50 | -3.18 | -3.59 | -3.45 |
| H24.11 | -2.10 | -3.05 | -5.55 | -3.56 | -2.49 | -2.85 | -3.81 | -3.20 |
| H25.11 | -1.36 | -2.06 | -6.66 | -2.43 | -1.76 | -2.87 | -4.27 | -2.35 |
| H26.11 | -1.01 | -2.88 | -3.58 | -2.43 | -2.56 | -2.54 | -3.20 | -1.70 |
| H27.11 | -0.65 | -2.11 | -3.92 | -2.08 | -2.69 | -2.07 | -3.40 | -1.33 |
| H28.11 | -1.04 | -2.35 | -5.30 | -2.77 | -2.94 | -2.42 | -4.24 | -2.59 |



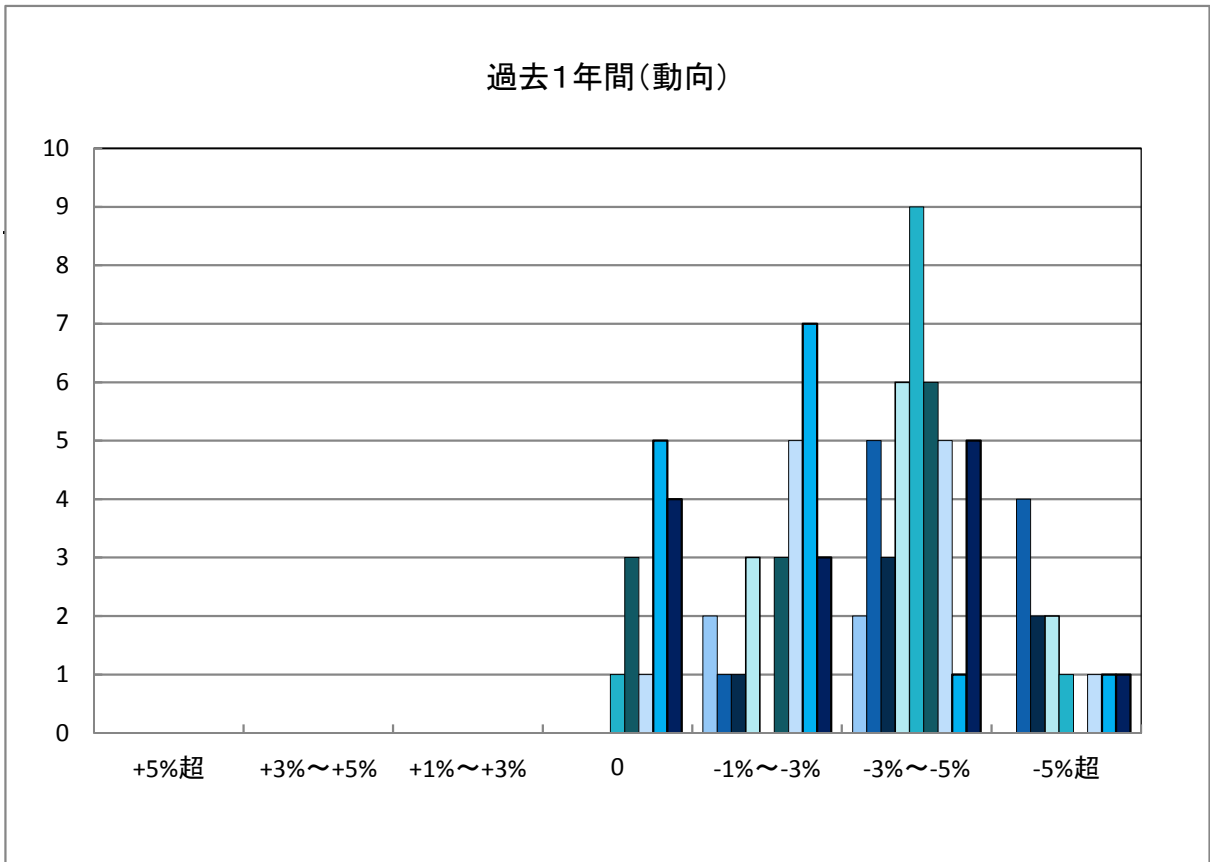
| 商業地平均変動率 | 松山市 | 今治市 | 宇和島市 | 八幡浜市 | 新居浜市 | 西条市 | 大洲市 | 四国中央市 |
|----------|-------|-------|-------|-------|-------|-------|-------|-------|
| H20.11 | -0.89 | -3.70 | -3.57 | -3.75 | -2.61 | -3.19 | -3.57 | -2.56 |
| H21.11 | -2.08 | -4.08 | -4.06 | -3.36 | -3.74 | -3.34 | -4.88 | -3.85 |
| H22.11 | -1.99 | -4.00 | -7.61 | -3.05 | -2.66 | -3.11 | -3.57 | -4.25 |
| H23.11 | -1.81 | -3.60 | -7.36 | -3.64 | -2.00 | -3.16 | -3.71 | -4.31 |
| H24.11 | -1.44 | -3.36 | -5.28 | -3.67 | -2.00 | -3.30 | -3.46 | -4.19 |
| H25.11 | -0.43 | -2.41 | -5.22 | -2.75 | -1.26 | -3.23 | -2.96 | -3.55 |
| H26.11 | 0.08 | -3.17 | -2.97 | -2.95 | -2.07 | -2.80 | -2.81 | -2.44 |
| H27.11 | 0.75 | -2.29 | -3.73 | -0.82 | -1.88 | -2.36 | -2.81 | -1.50 |
| H28.11 | 0.18 | -1.77 | -4.30 | -2.35 | -2.44 | -2.61 | -3.44 | -2.18 |



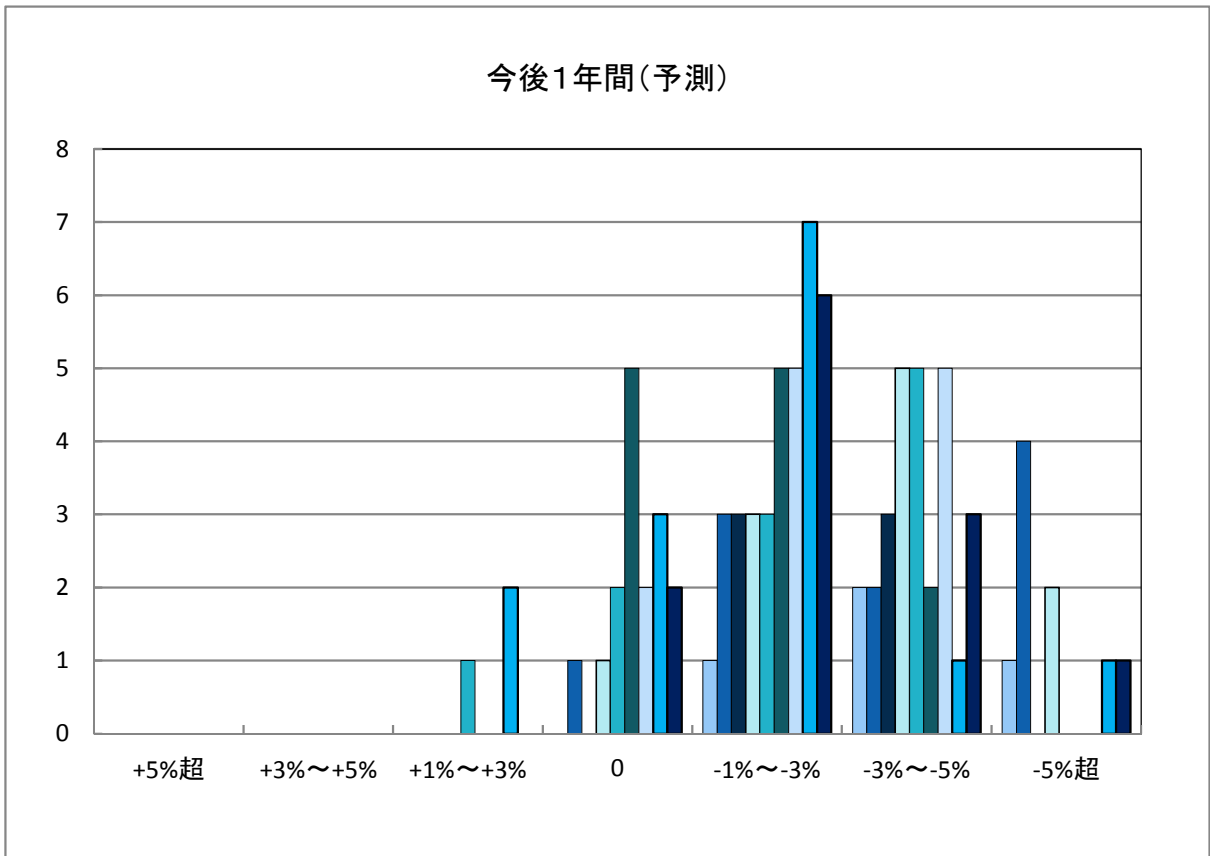
「地価動向等に関するアンケート調査」結果報告

○今治市の過去1年間の地価動向の実感

■ H20.11 実施 ■ H21.11 実施 ■ H22.11 実施
■ H23.11 実施 ■ H24.11 実施 ■ H25.11 実施
■ H26.11 実施 ■ H27.11 実施 ■ H28.11 実施

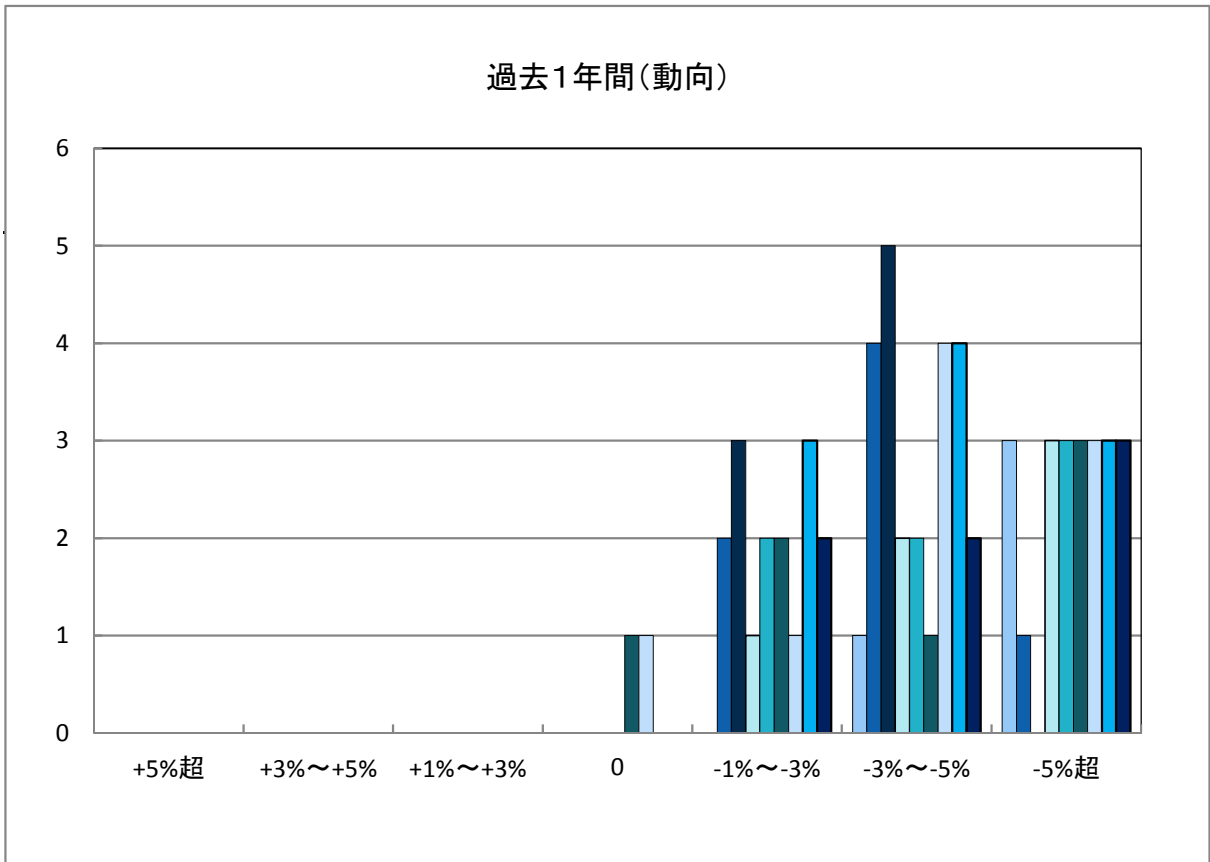
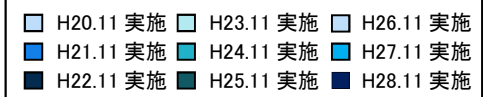


○今治市の今後1年間の地価動向の予測

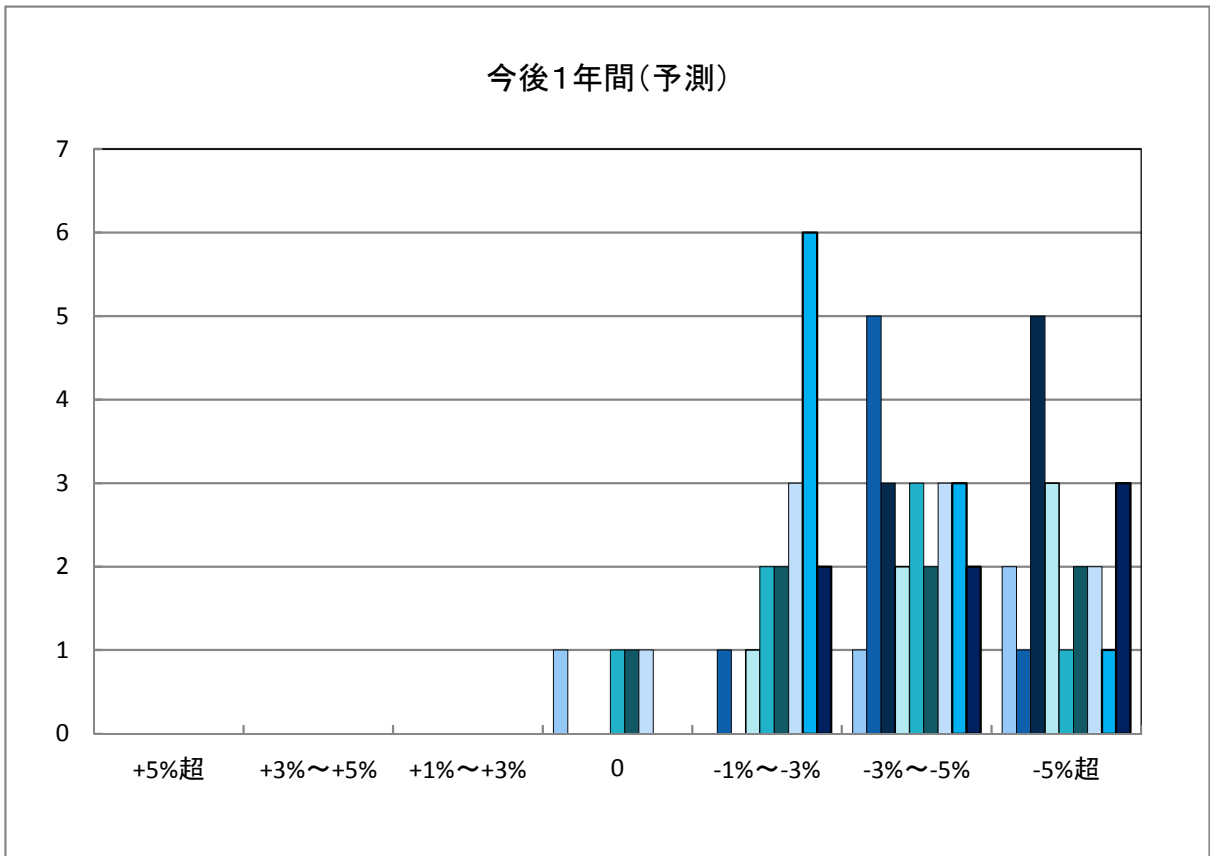


「地価動向等に関するアンケート調査」結果報告

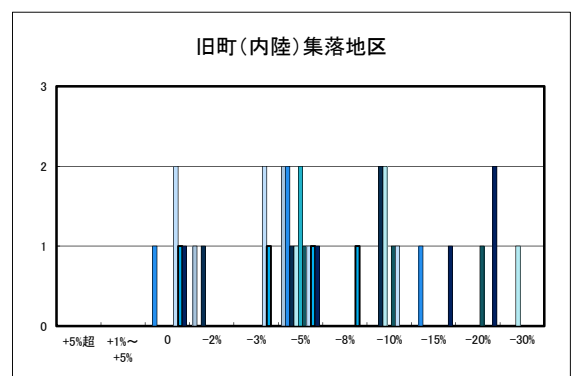
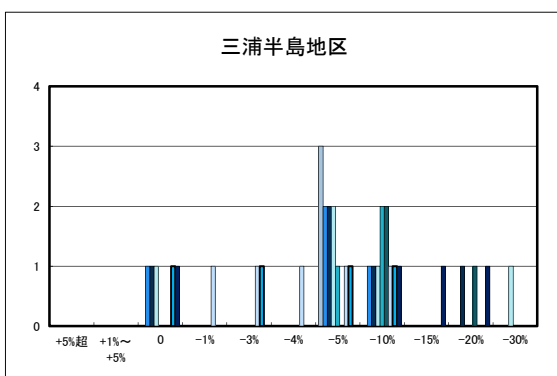
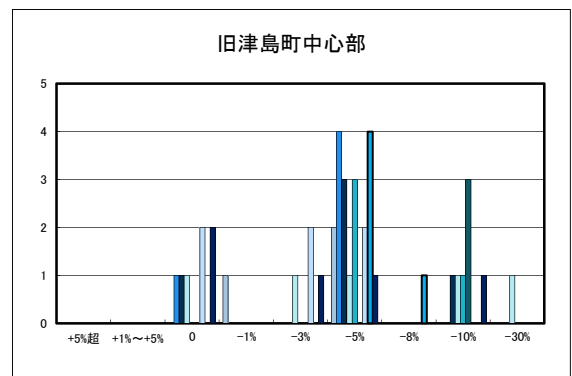
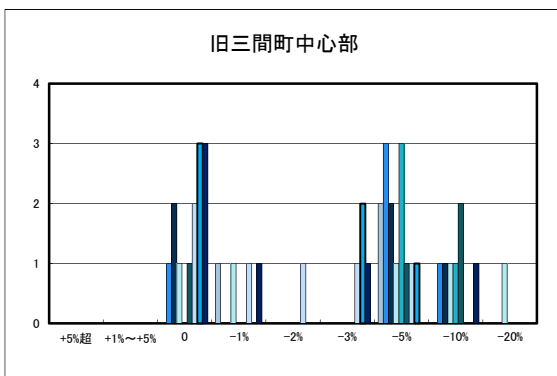
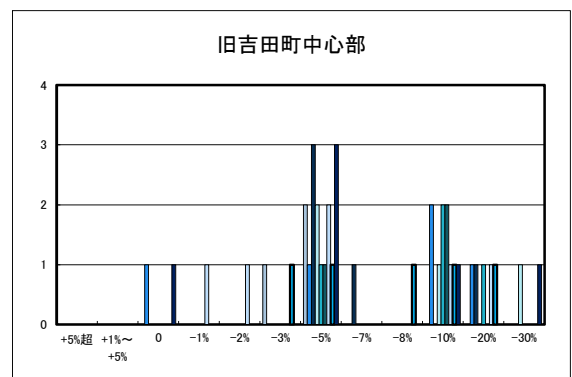
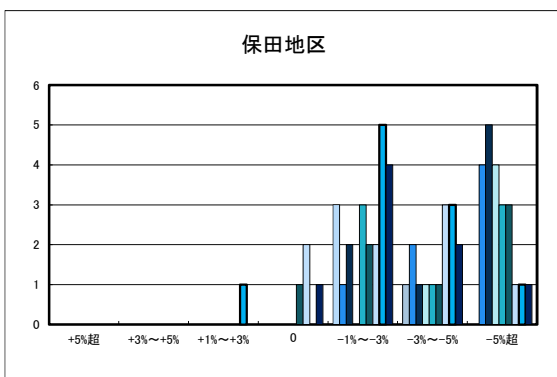
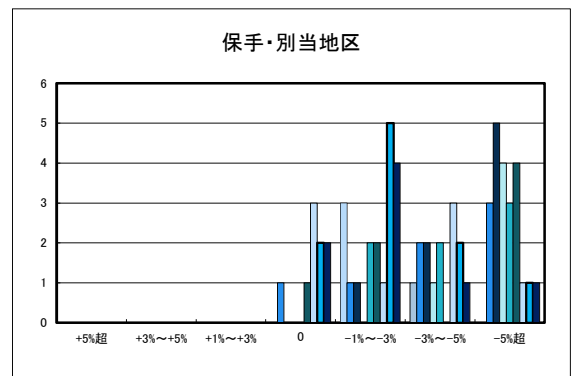
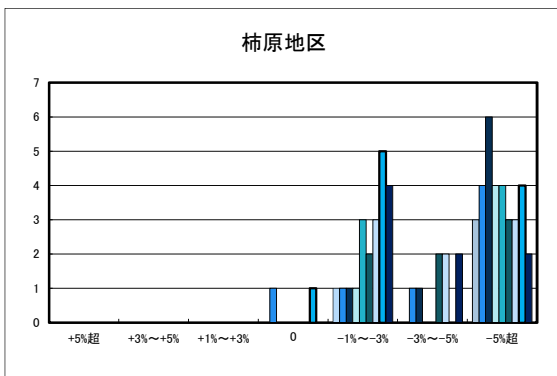
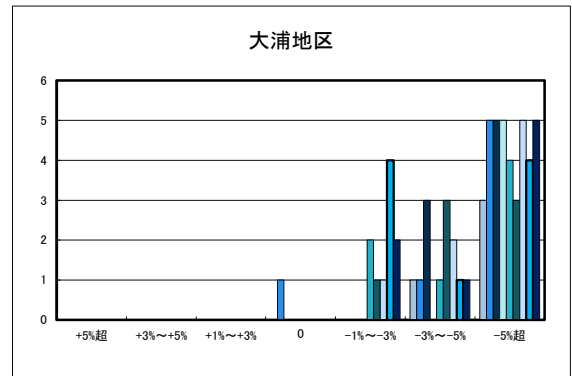
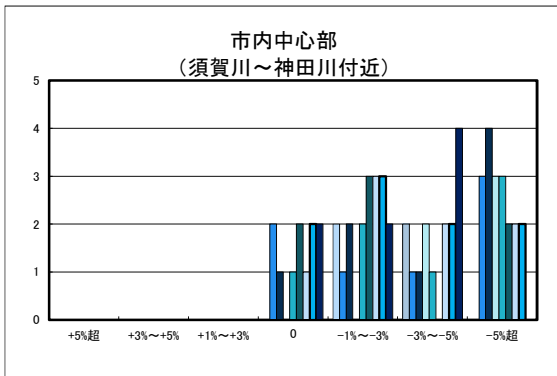
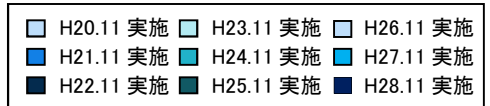
○宇和島市の過去1年間の地価動向の実感



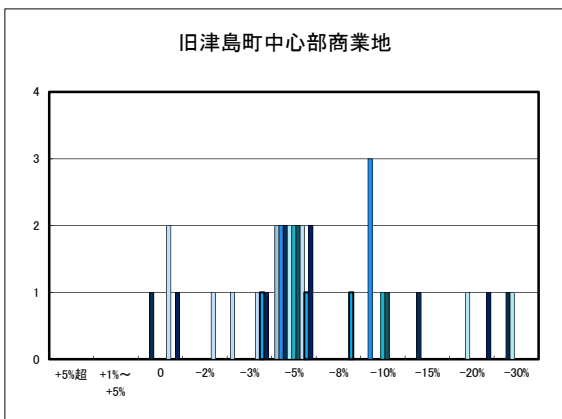
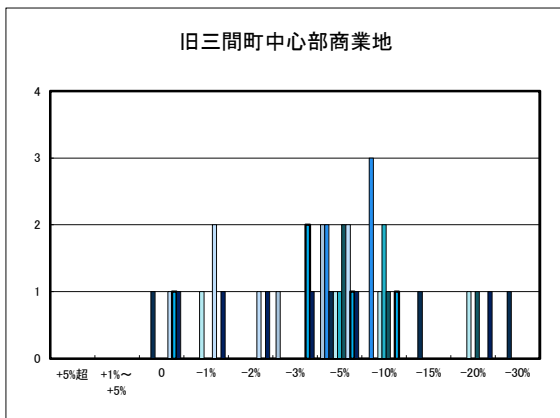
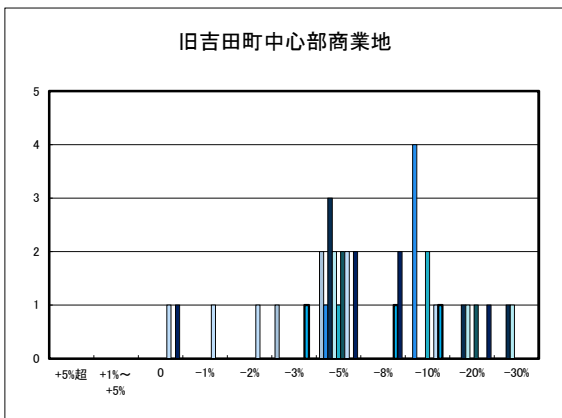
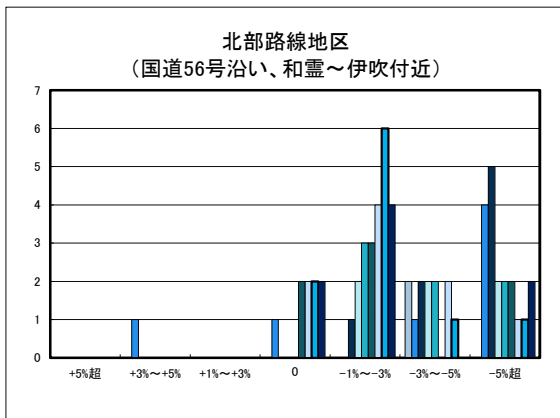
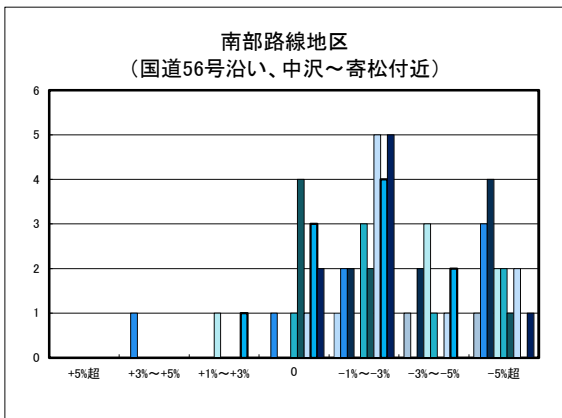
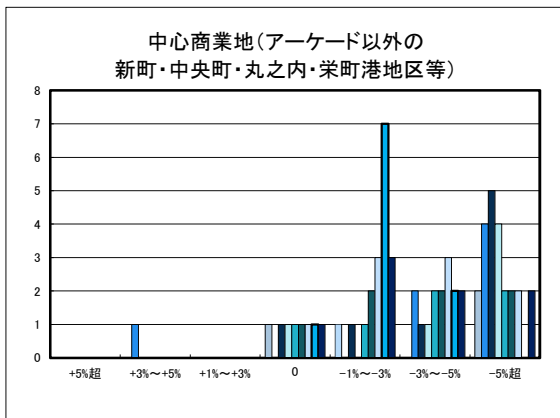
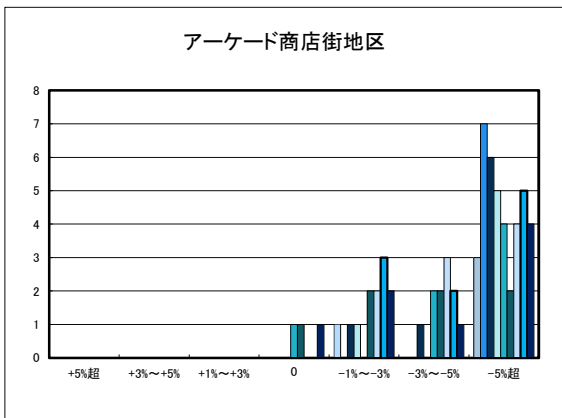
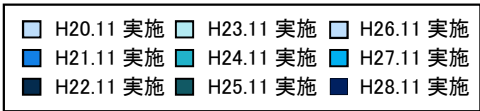
○宇和島市の今後1年間の地価動向の予測



○宇和島市住宅地(地域別)の過去1年間の地価動向について

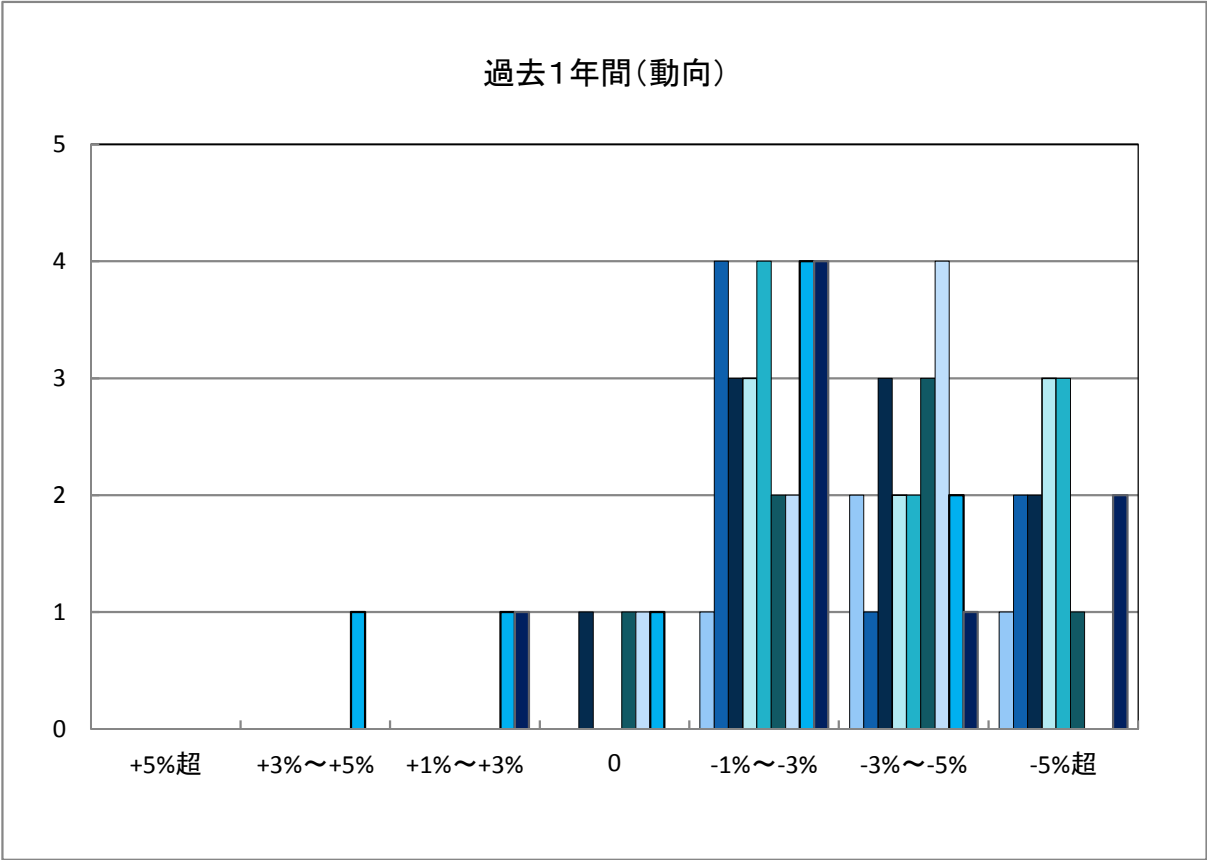
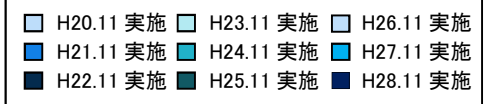


○宇和島市商業地(地域別)の過去1年間の地価動向について

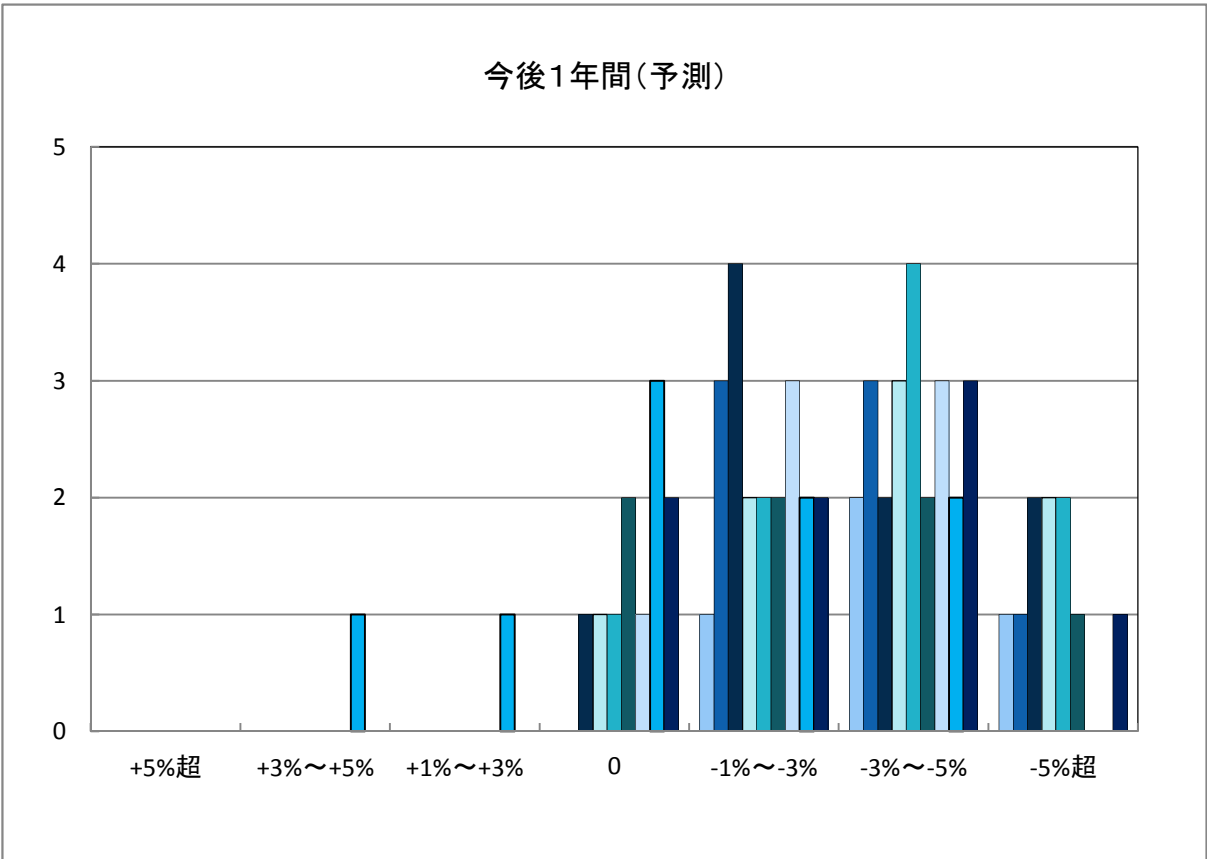


「地価動向等に関するアンケート調査」結果報告

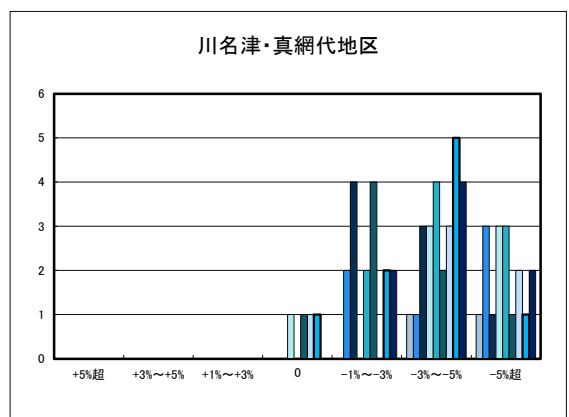
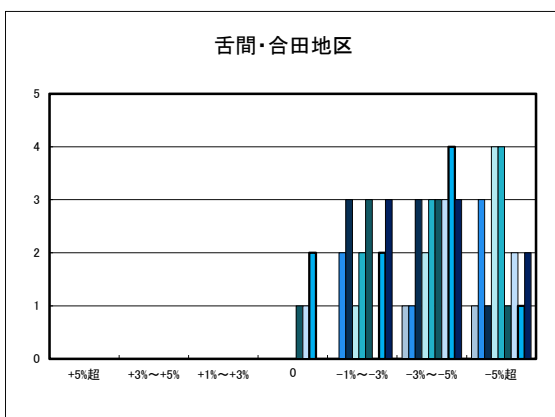
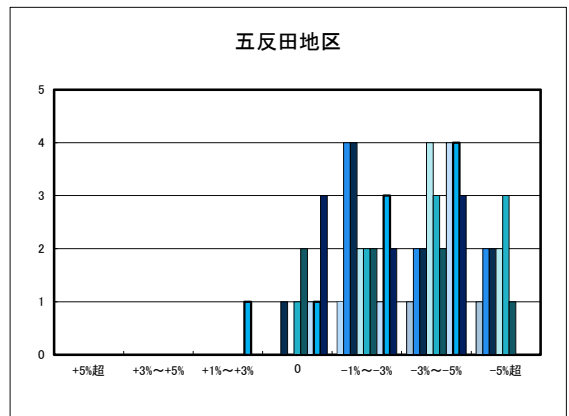
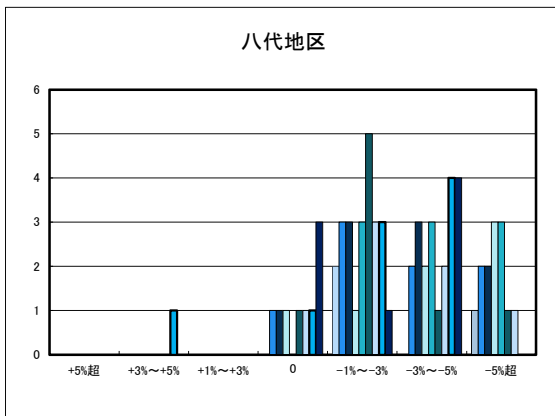
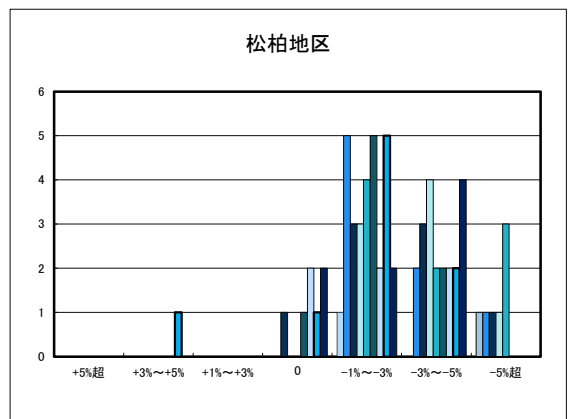
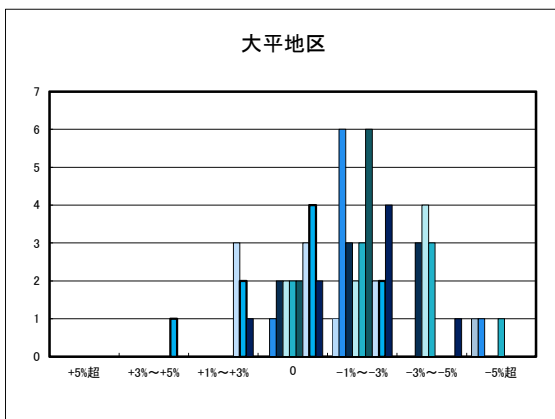
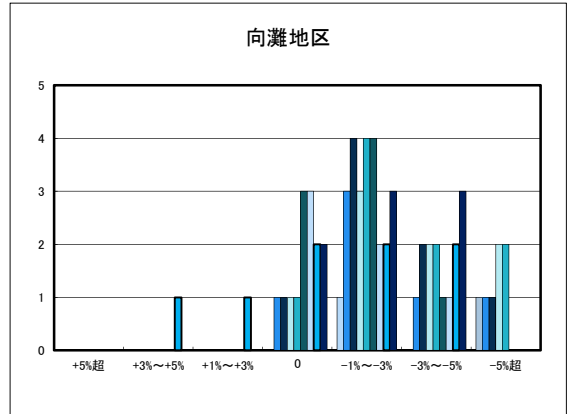
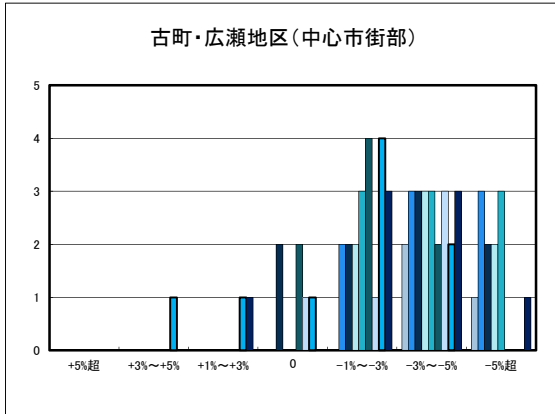
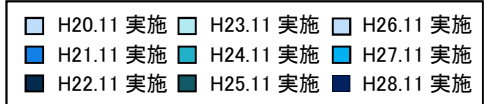
○八幡浜市の過去1年間の地価動向の実感



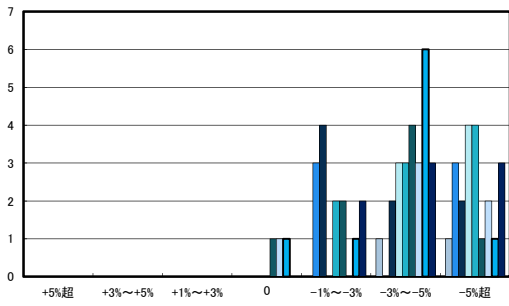
○八幡浜市の今後1年間の地価動向の予測



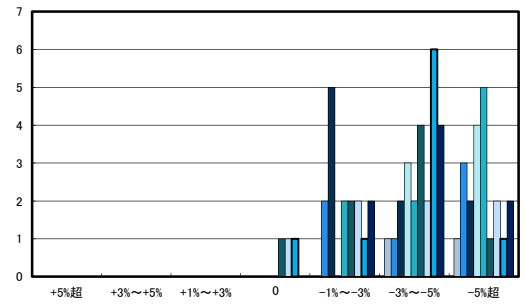
○八幡浜市住宅地(地域別)の過去1年間の地価動向について



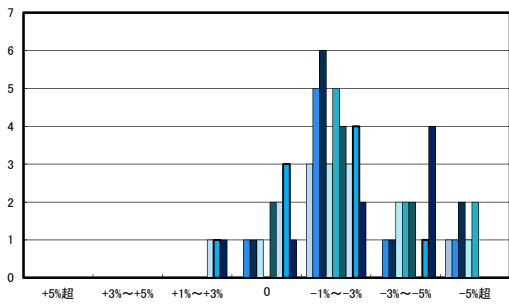
日土地区



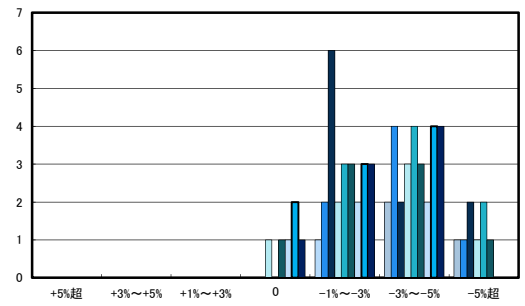
若山・布喜川地区



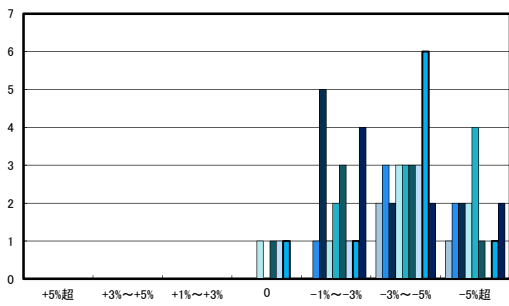
保内町(喜木・宮内)中心部



保内町川之石地区



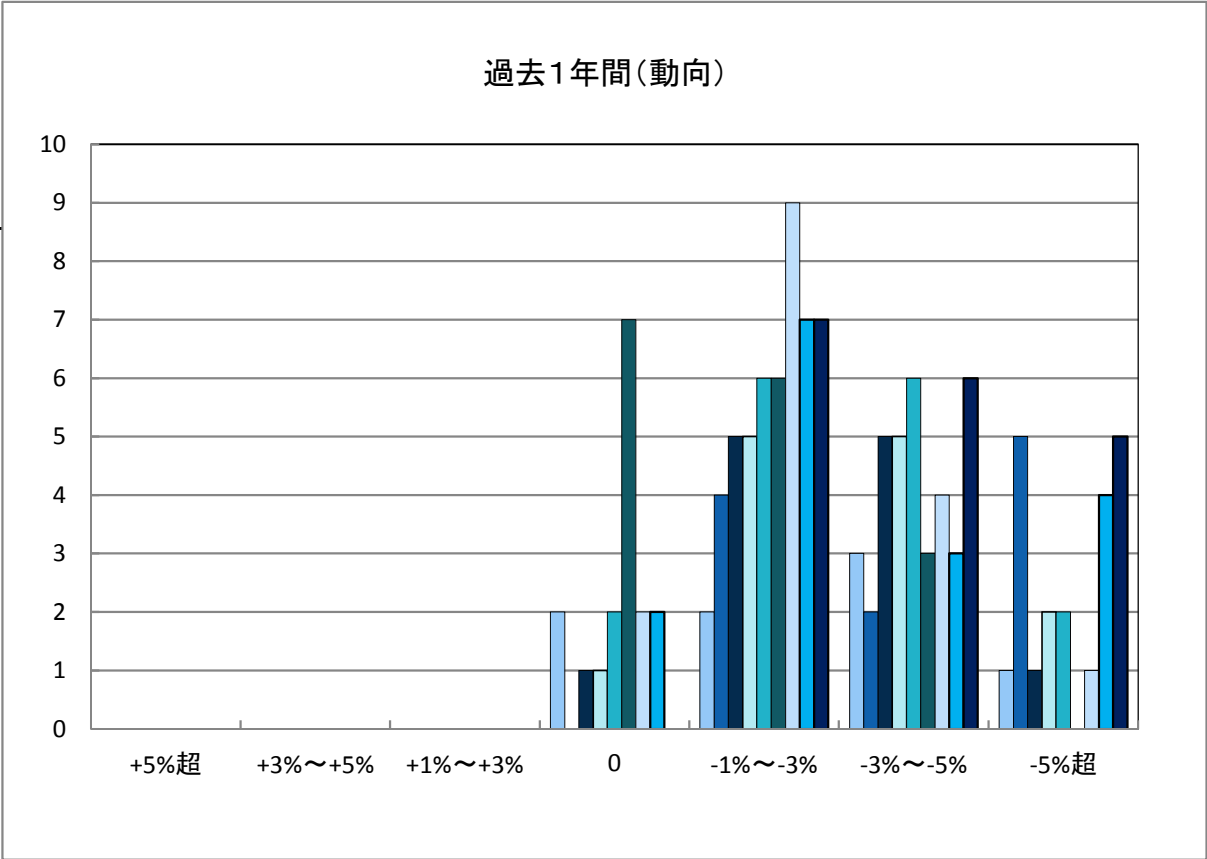
保内町集落部



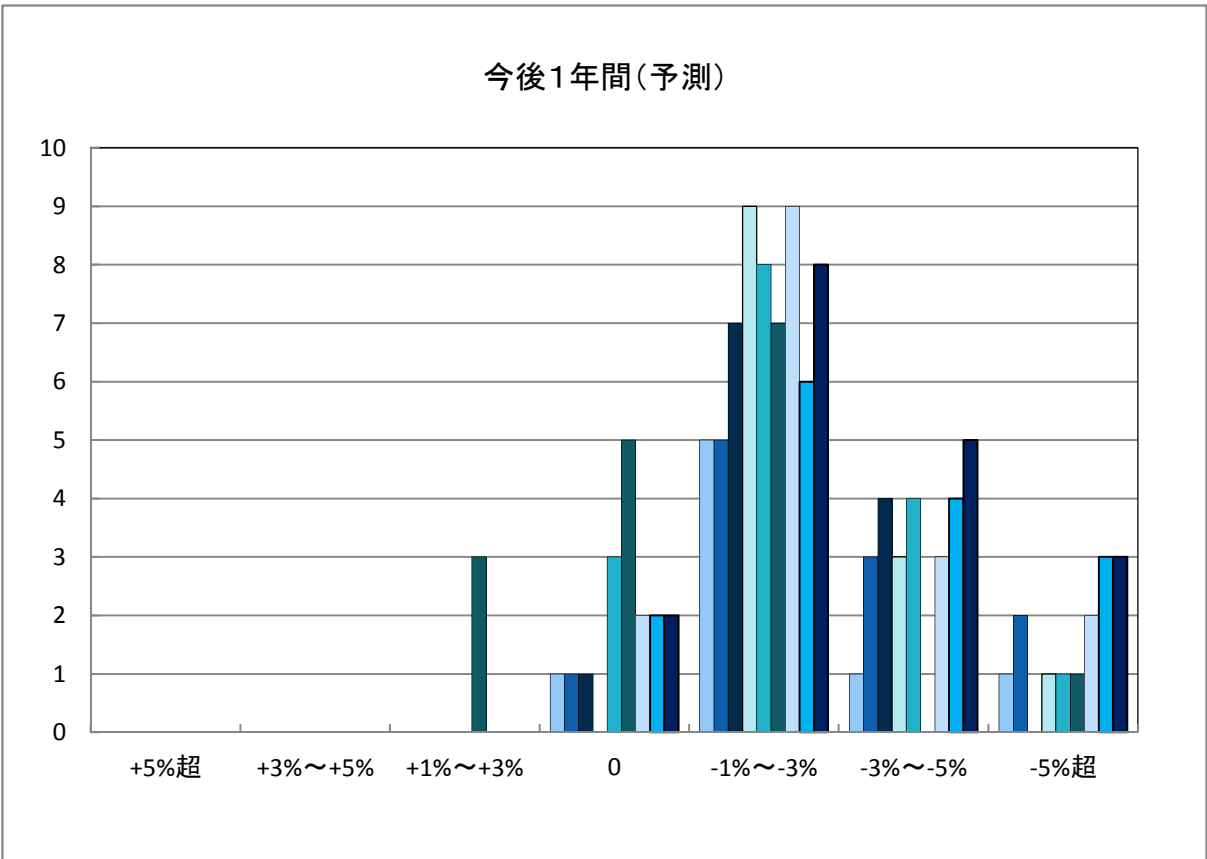
「地価動向等に関するアンケート調査」結果報告

○新居浜市の過去1年間の地価動向の実感

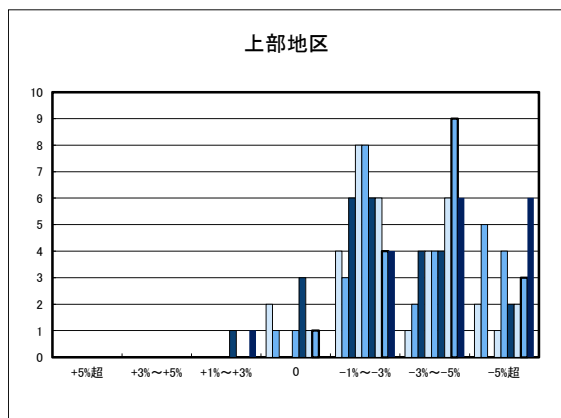
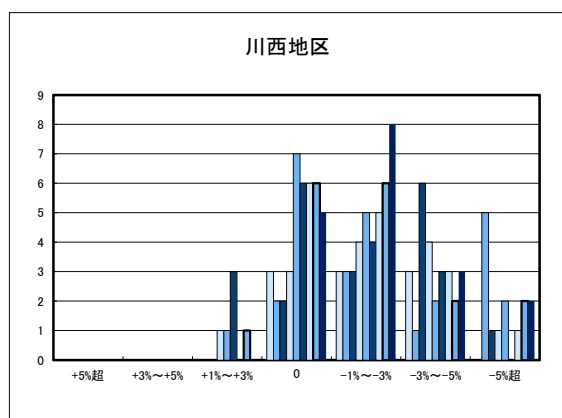
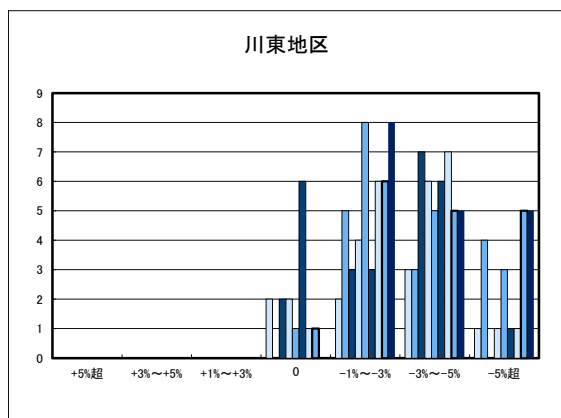
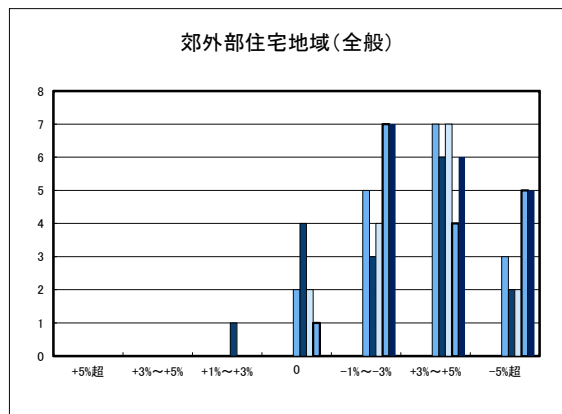
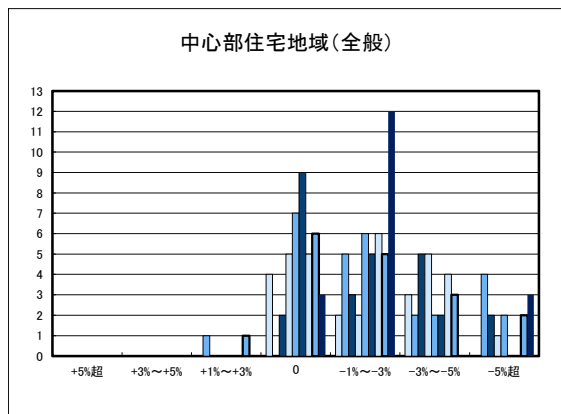
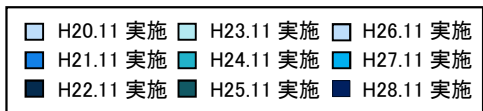
- H20.11 実施 □ H23.11 実施 □ H26.11 実施
- H21.11 実施 ■ H24.11 実施 ■ H27.11 実施
- H22.11 実施 ■ H25.11 実施 ■ H28.11 実施



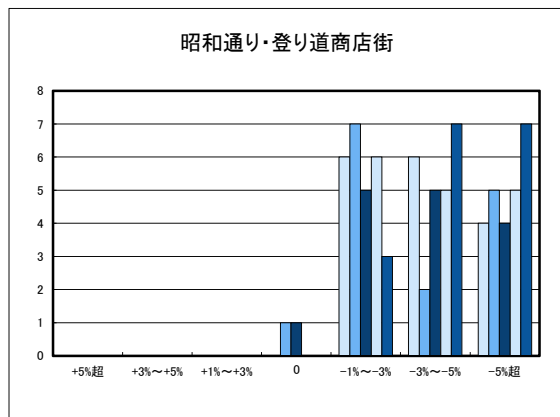
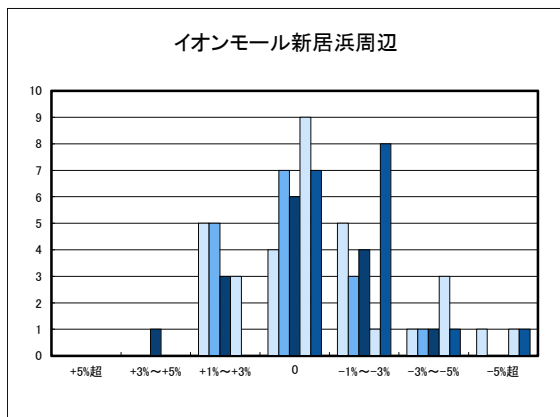
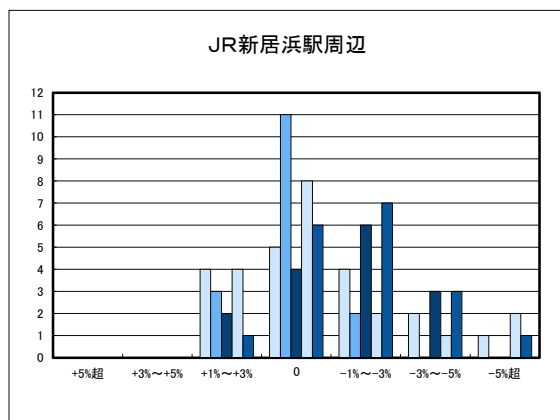
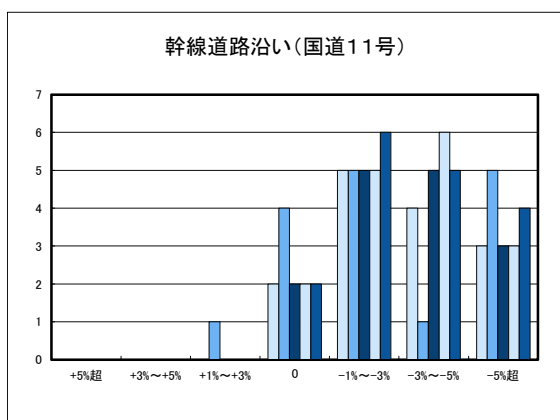
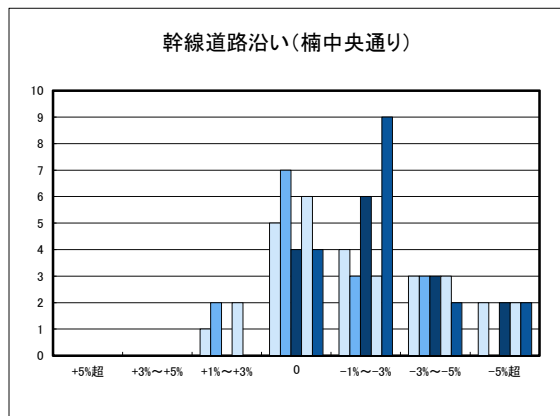
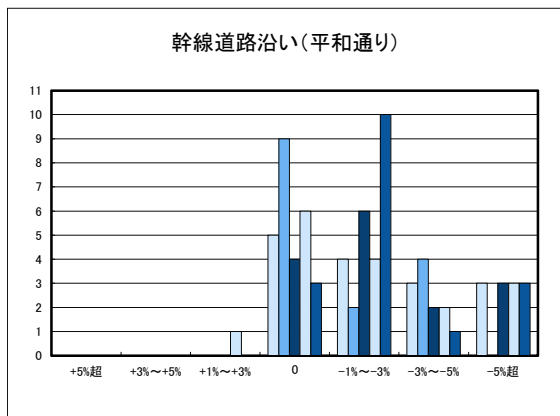
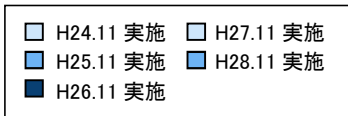
○新居浜市の今後1年間の地価動向の予測



○新居浜市住宅地(地域別)の過去1年間の地価動向について

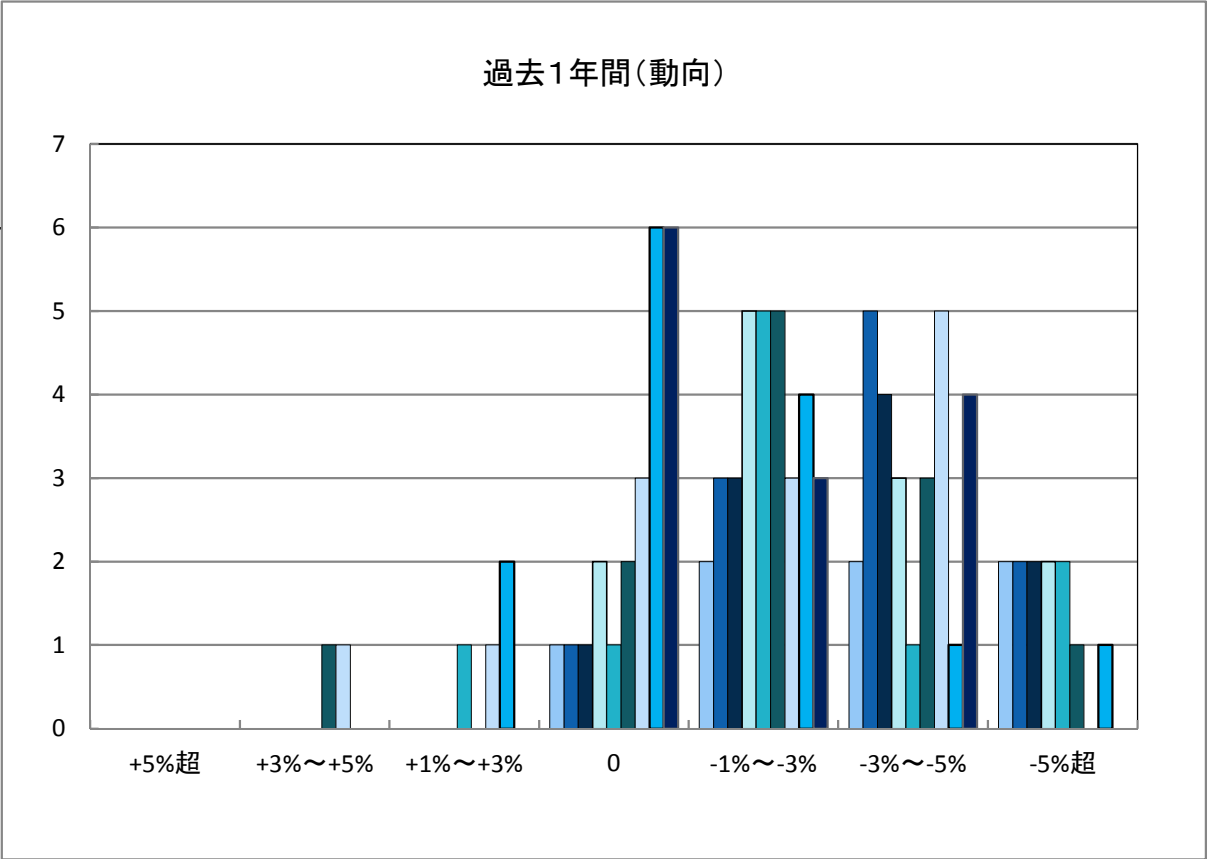
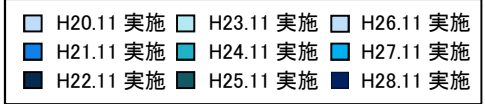


○新居浜市商業地(地域別)の過去1年間の地価動向について

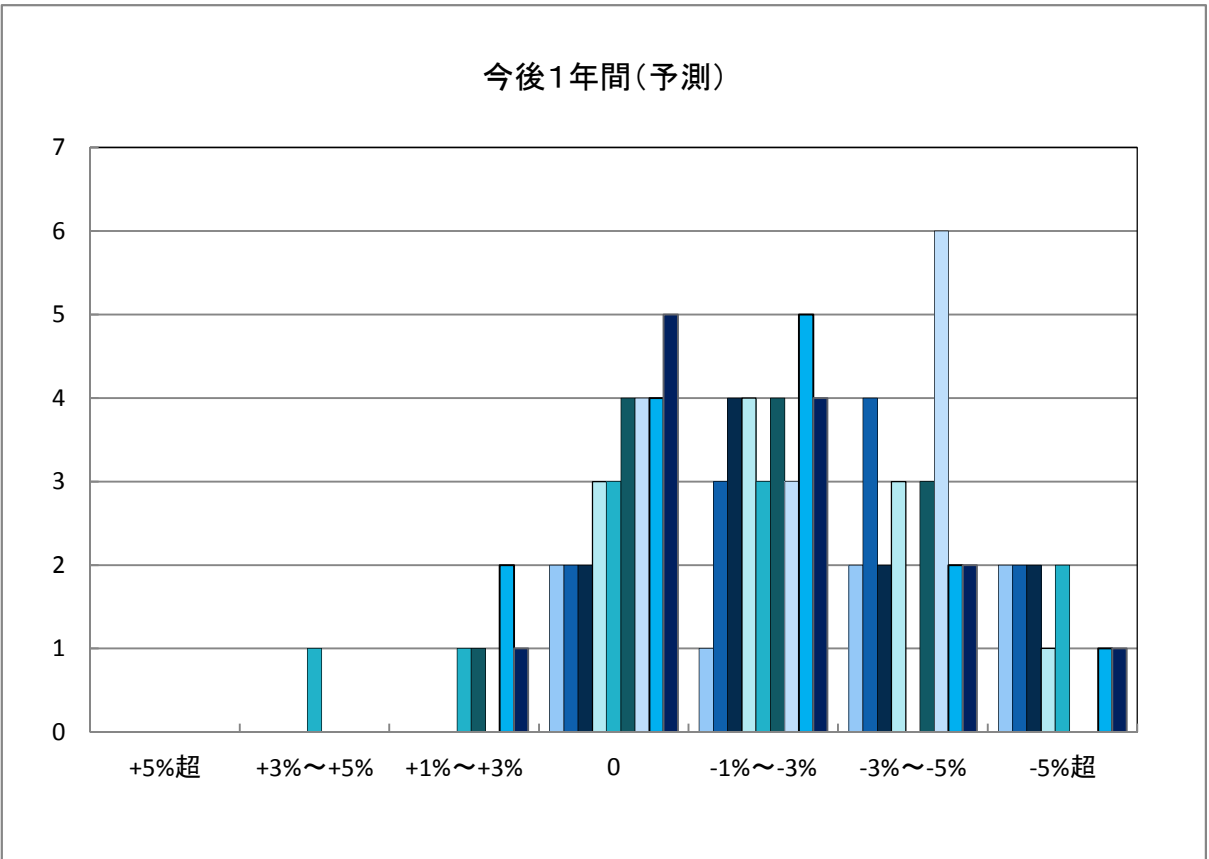


「地価動向等に関するアンケート調査」結果報告

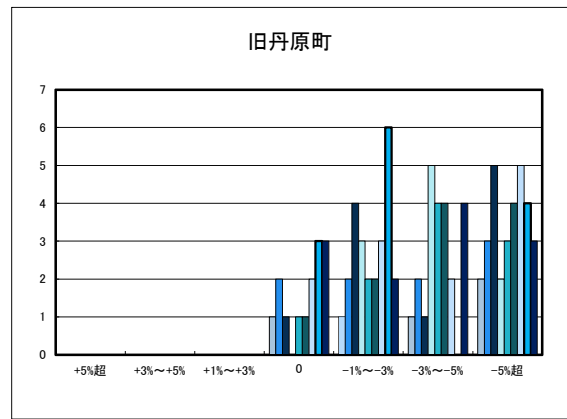
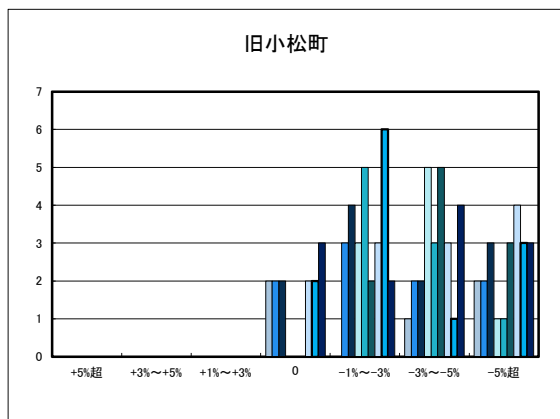
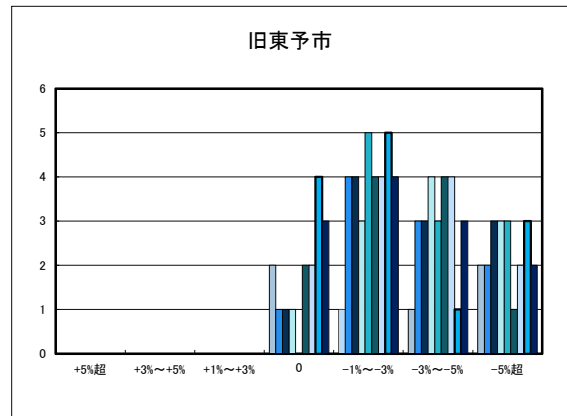
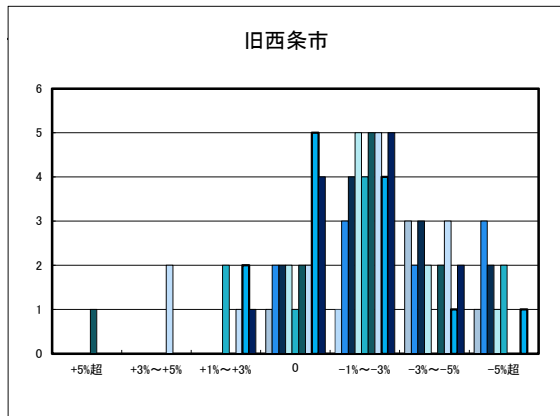
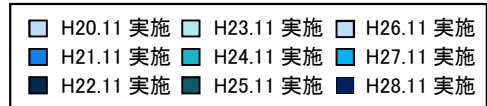
○西条市の過去1年間の地価動向の実感



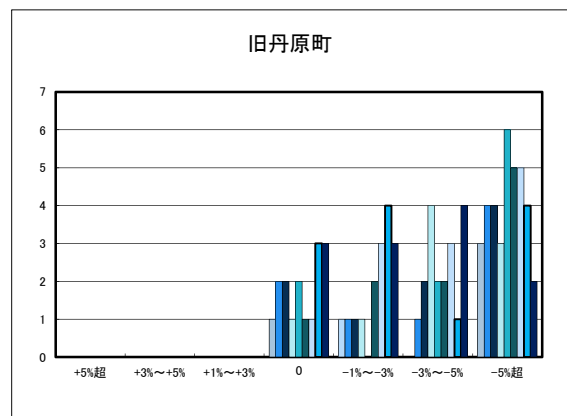
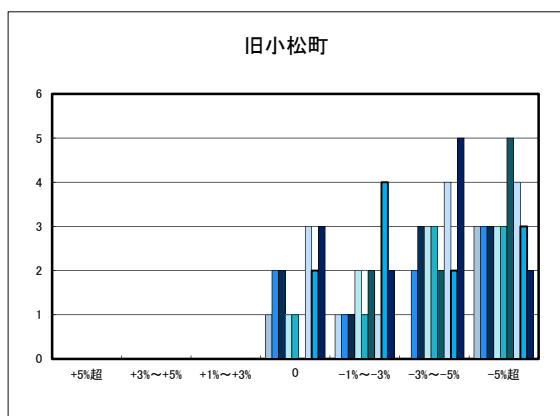
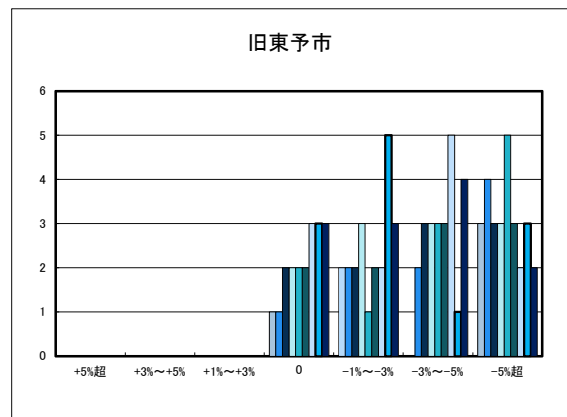
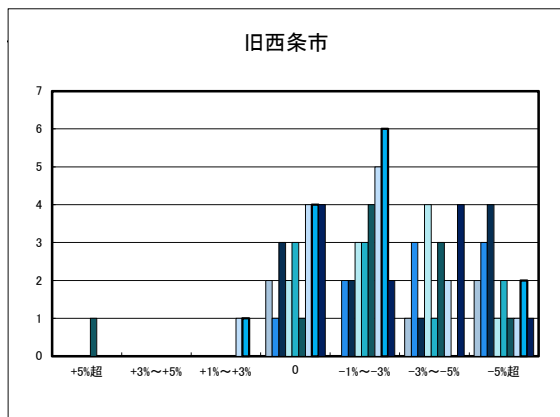
○西条市の今後1年間の地価動向の予測



○西条市住宅地(地域別)の過去1年間の地価動向について



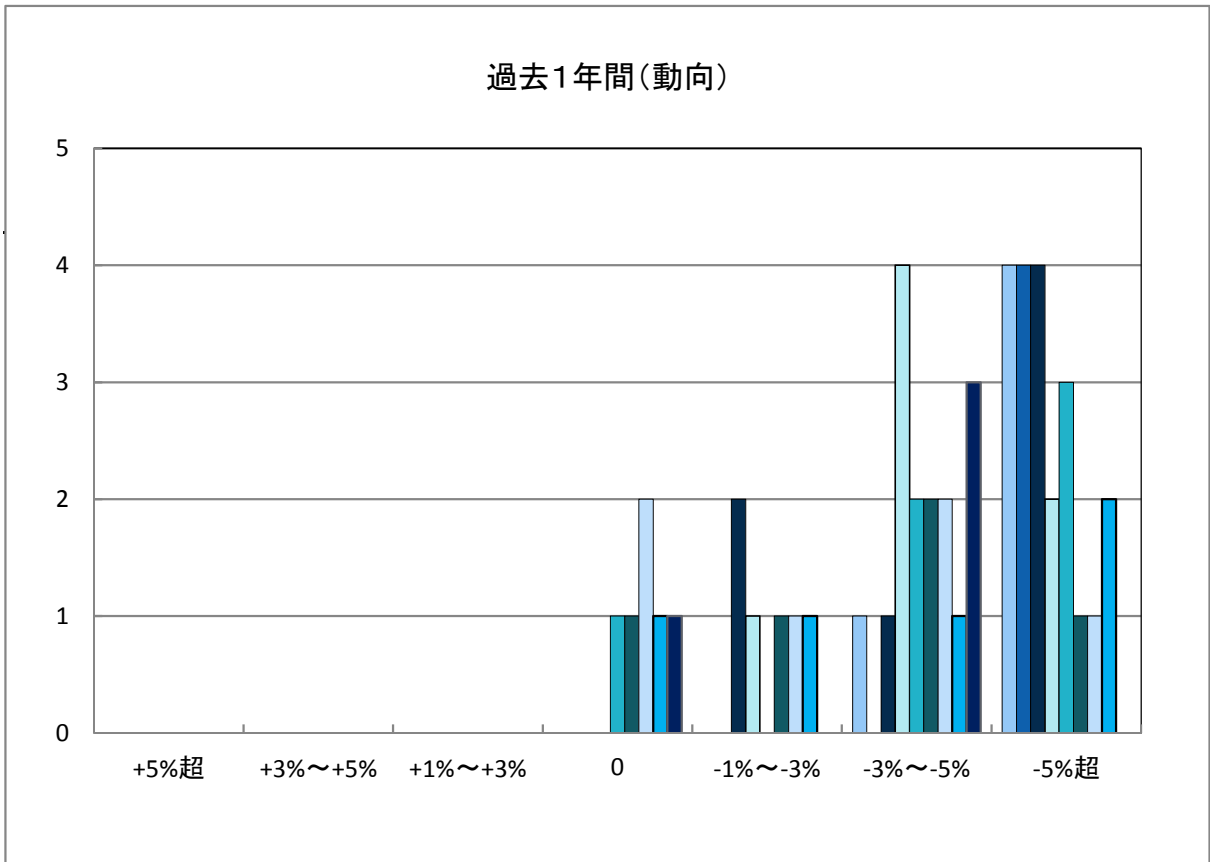
○西条市商業地(地域別)の過去1年間の地価動向について



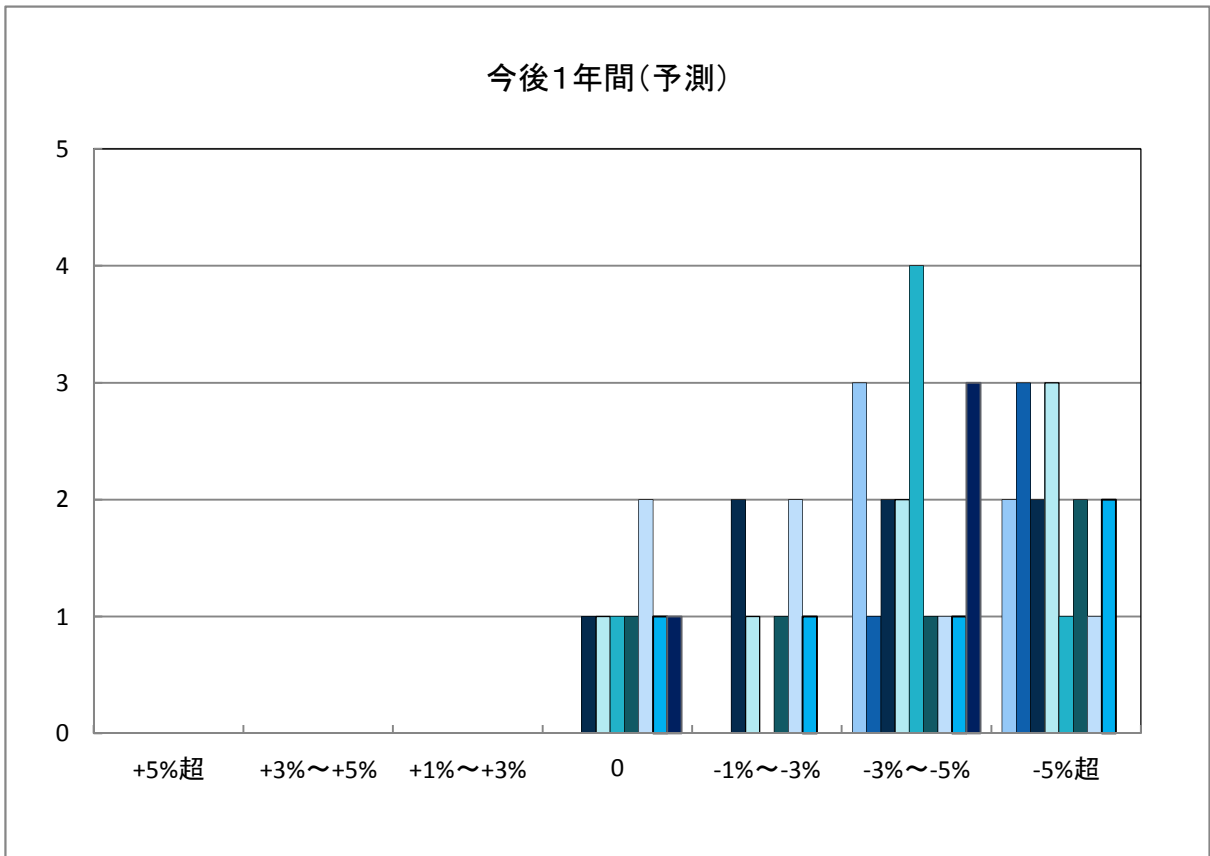
「地価動向等に関するアンケート調査」結果報告

○大洲市の過去1年間の地価動向の実感

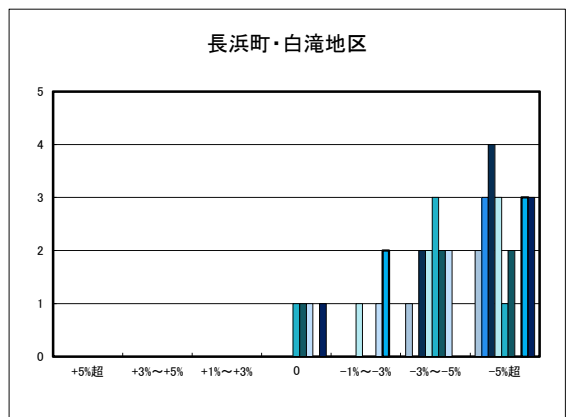
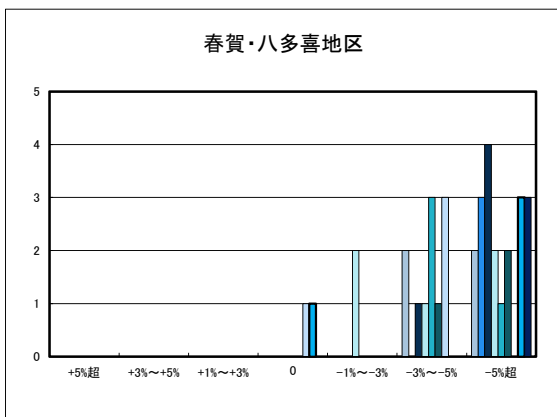
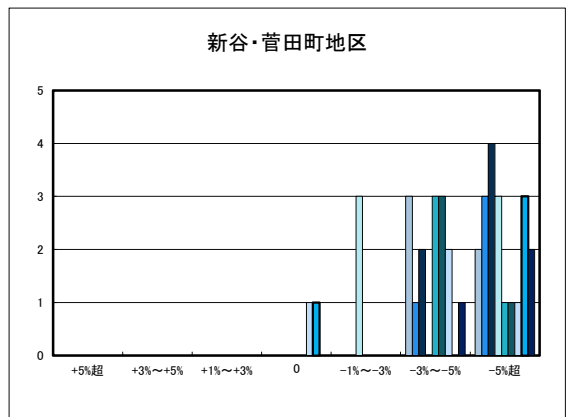
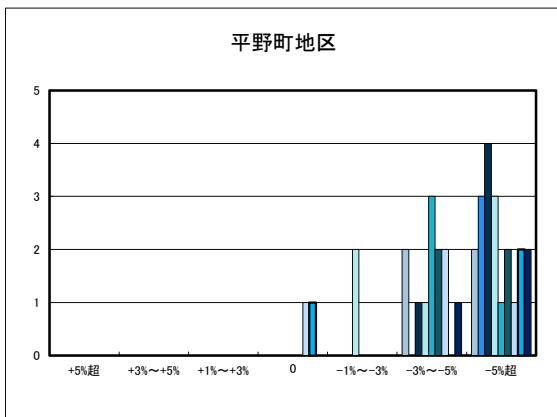
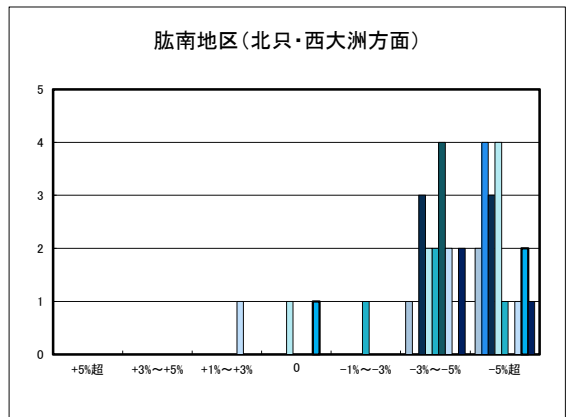
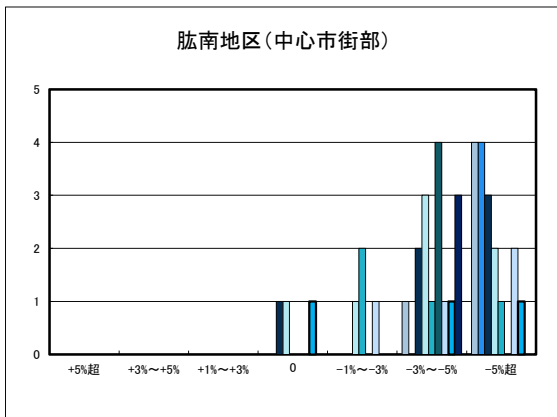
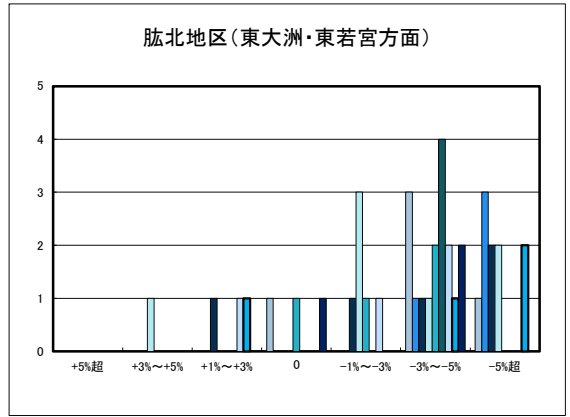
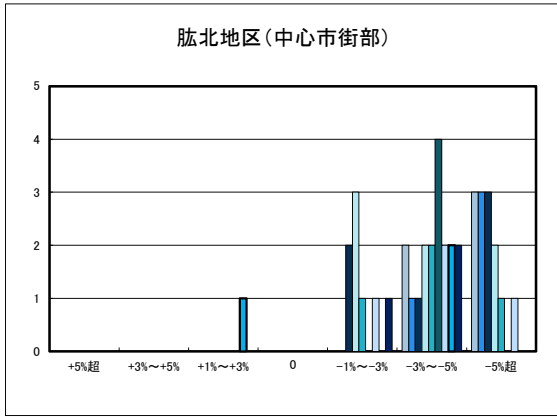
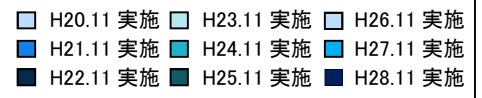
- H20.11 実施 □ H23.11 実施 □ H26.11 実施
- H21.11 実施 ■ H24.11 実施 ■ H27.11 実施
- H22.11 実施 ■ H25.11 実施 ■ H28.11 実施

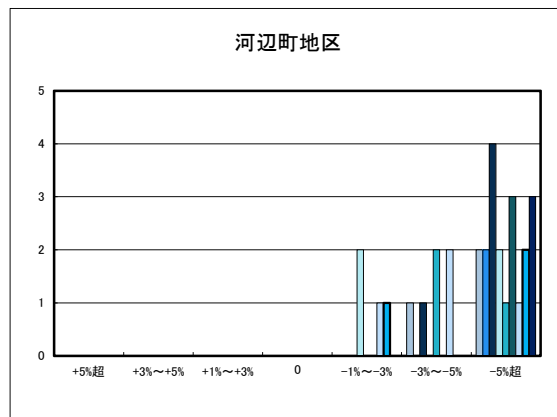
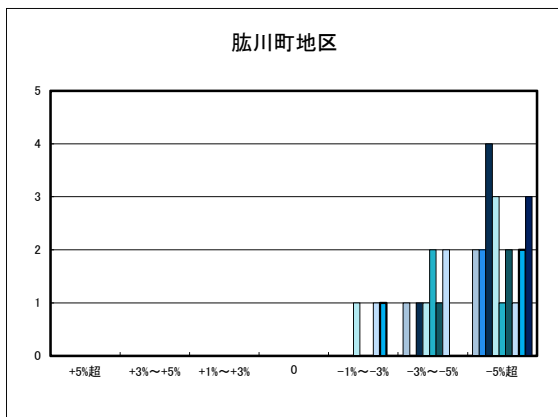


○大洲市の今後1年間の地価動向の予測

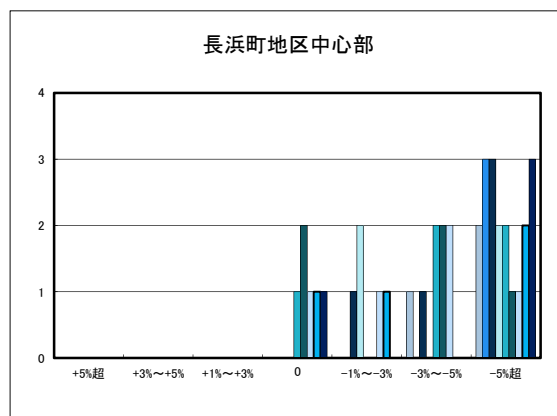
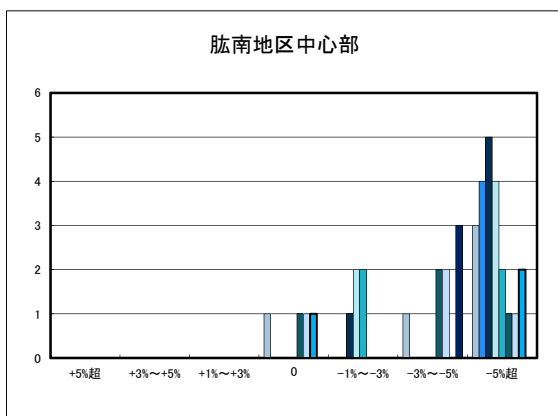
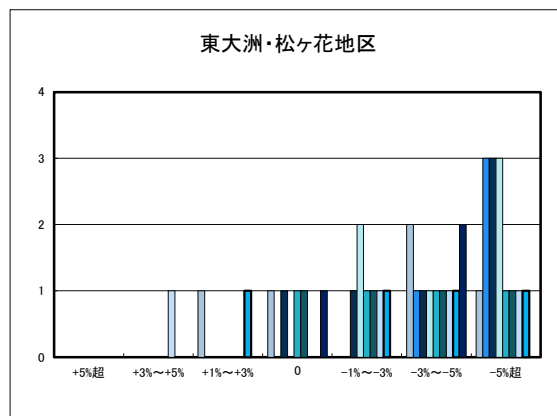
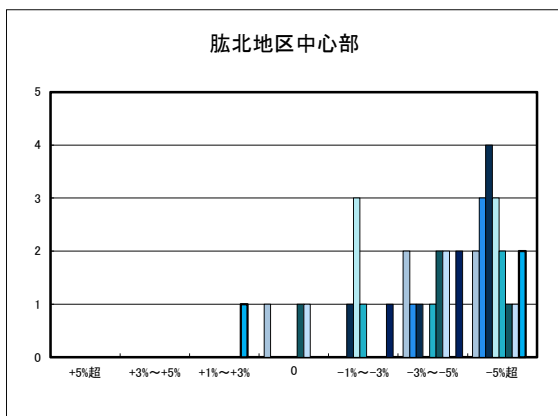


○大洲市住宅地(地域別)の過去1年間の地価動向について





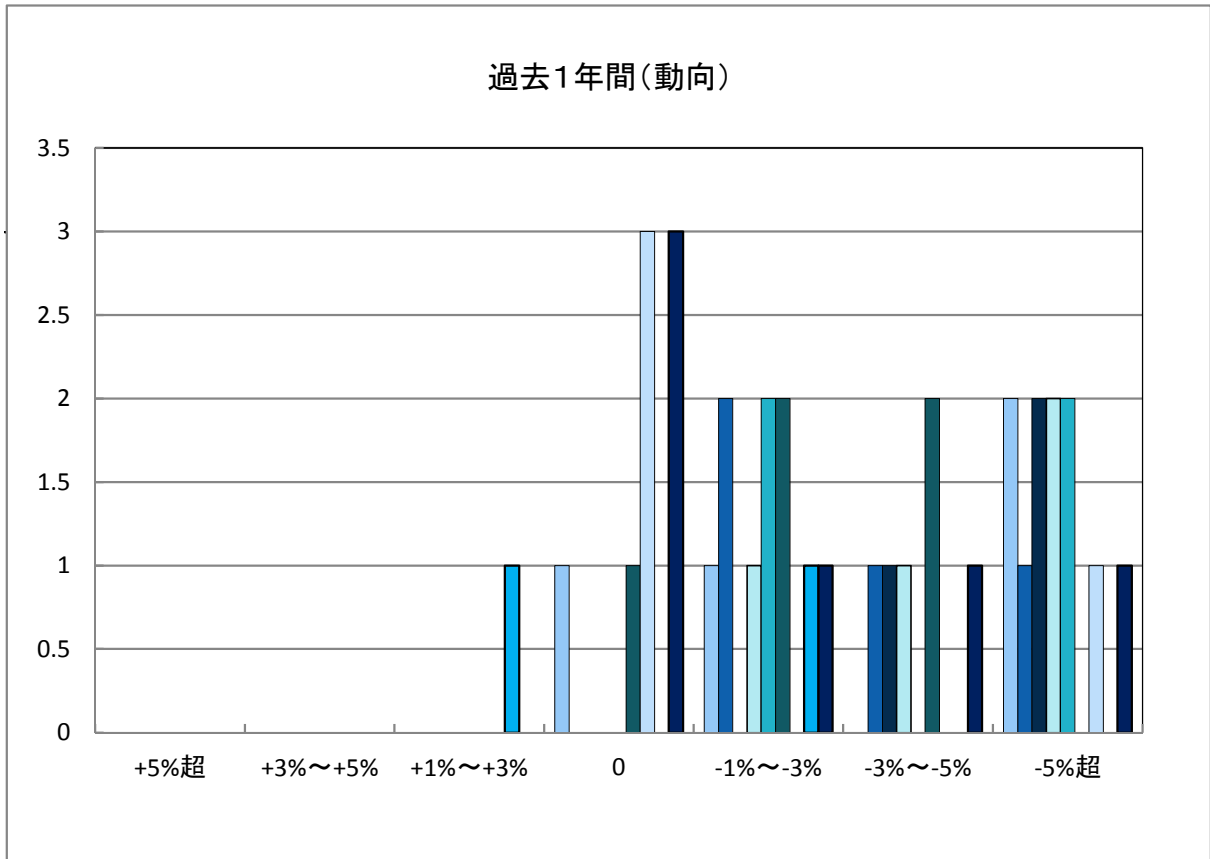
○大洲市商業地(地域別)の過去1年間の地価動向について



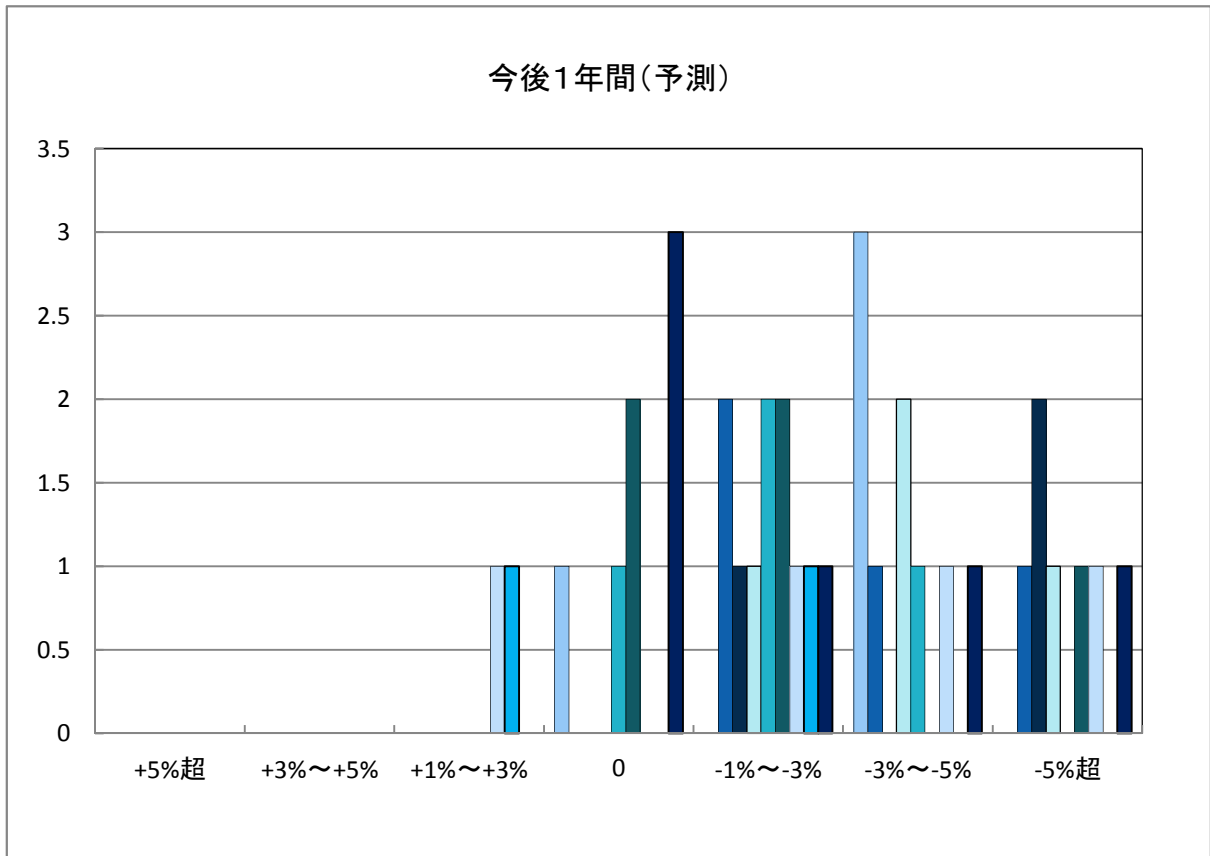
「地価動向等に関するアンケート調査」結果報告

○四国中央市の過去1年間の地価動向の実感

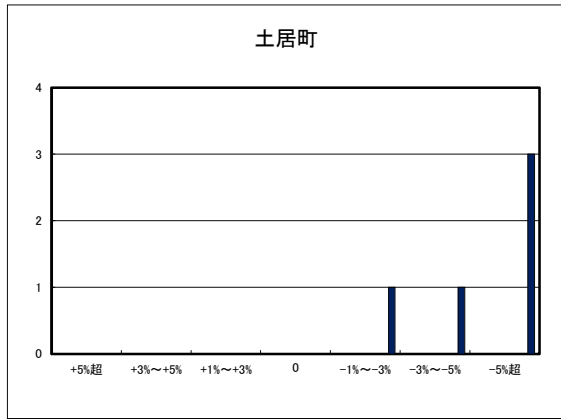
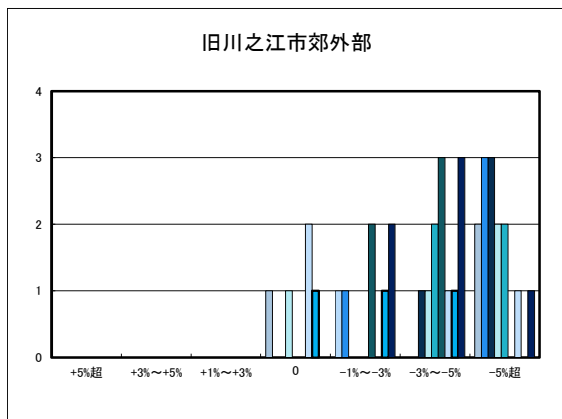
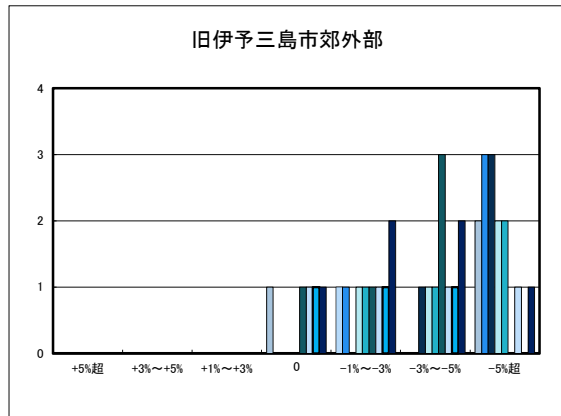
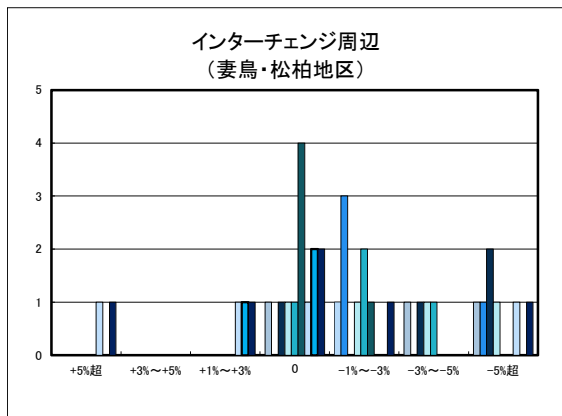
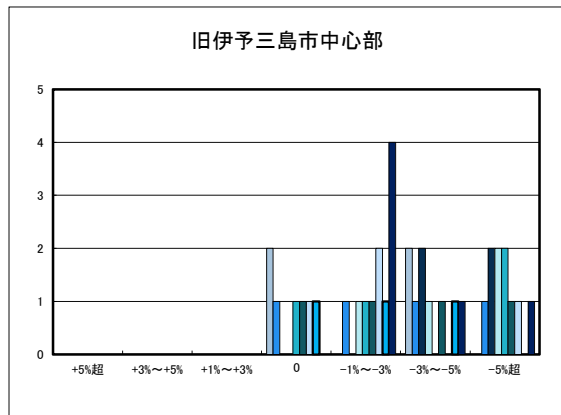
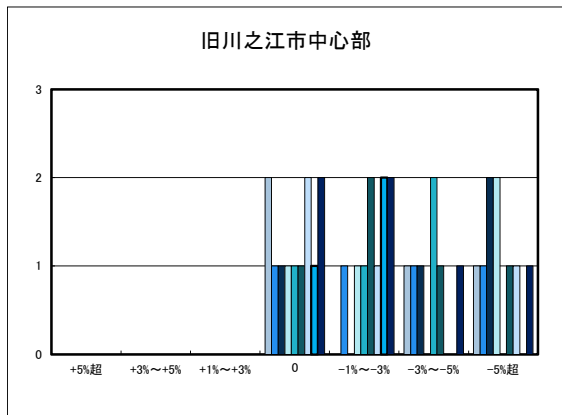
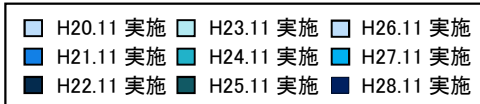
| | | |
|-------------|-------------|-------------|
| □ H20.11 実施 | □ H23.11 実施 | □ H26.11 実施 |
| ■ H21.11 実施 | ■ H24.11 実施 | ■ H27.11 実施 |
| ■ H22.11 実施 | ■ H25.11 実施 | ■ H28.11 実施 |



○四国中央市の今後1年間の地価動向の予測



○四国中央市住宅地(地域別)の過去1年間の地価動向について



○四国中央市商業地(地域別)の過去1年間の地価動向について

