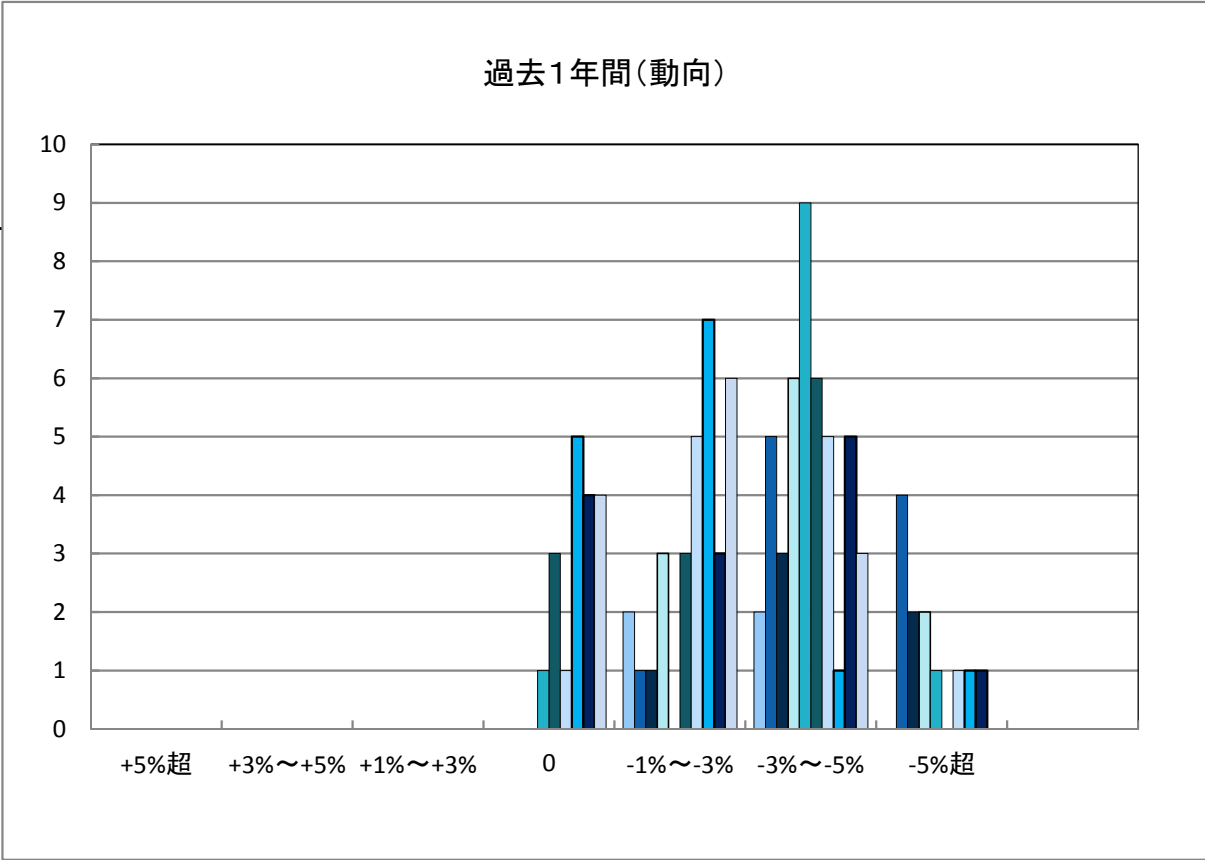
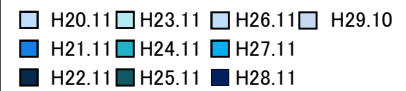
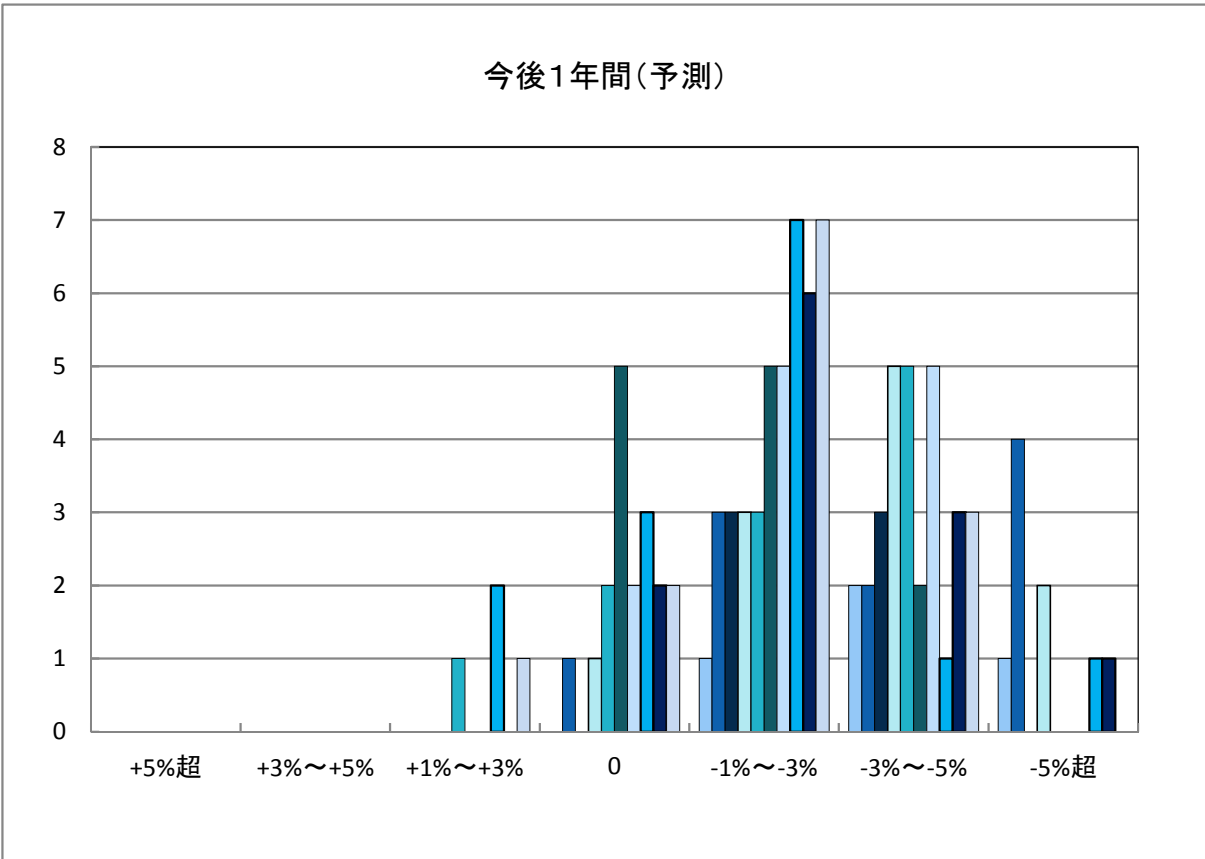


「地価動向等に関するアンケート調査」結果報告

○今治市の過去1年間の地価動向の実感

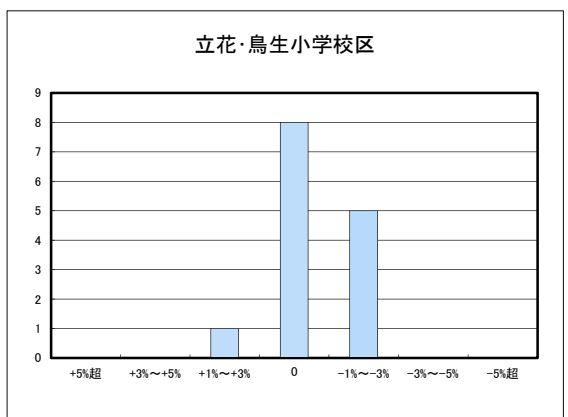
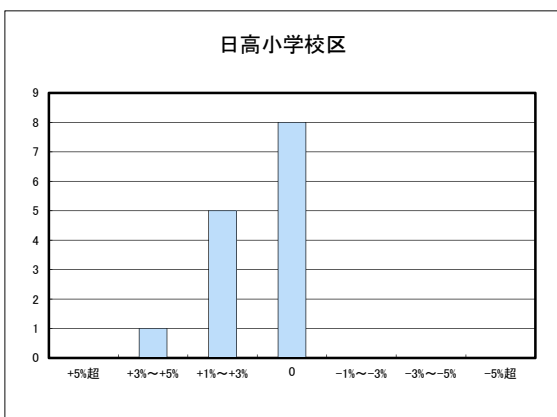
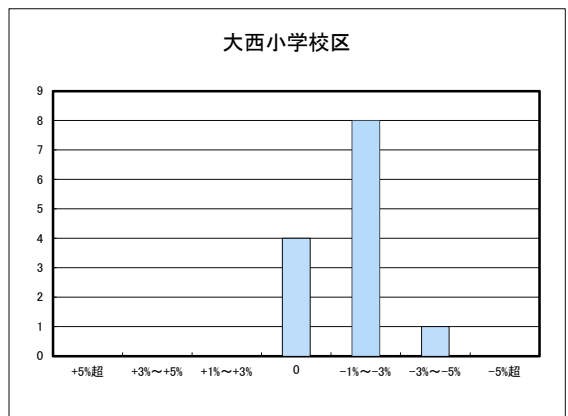
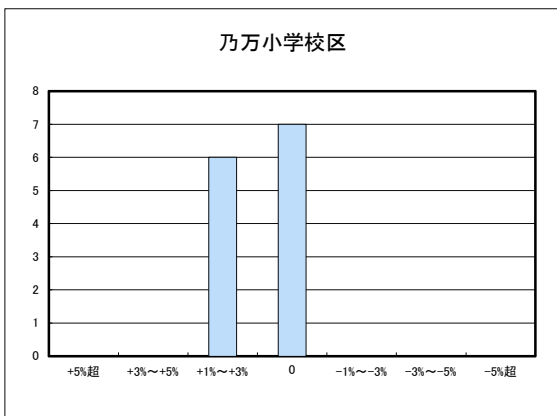
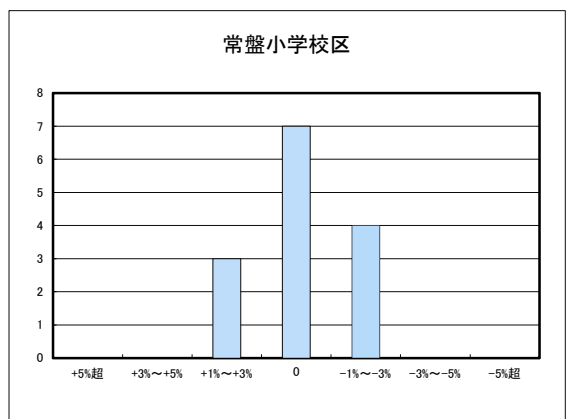
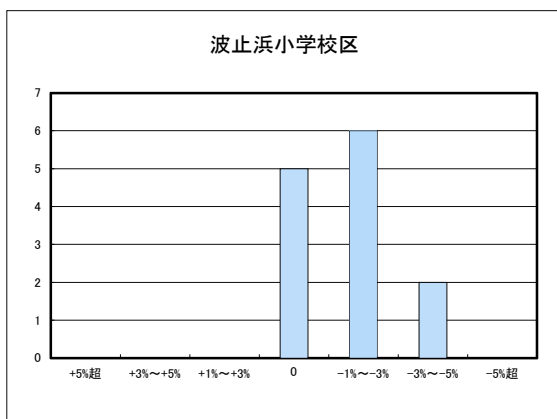
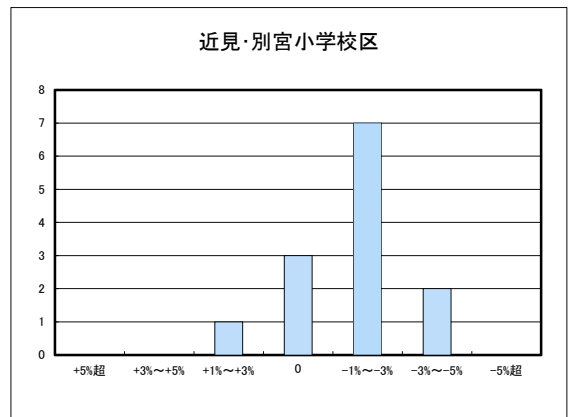
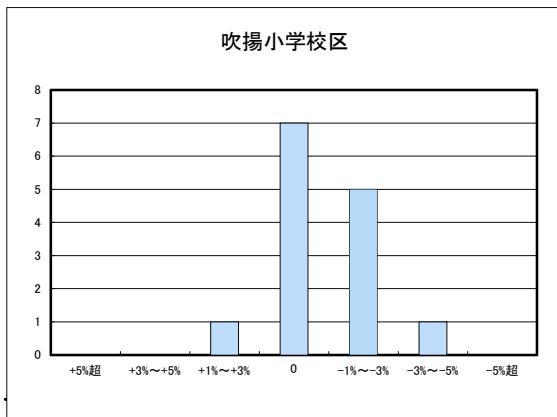


○今治市の今後1年間の地価動向の予測

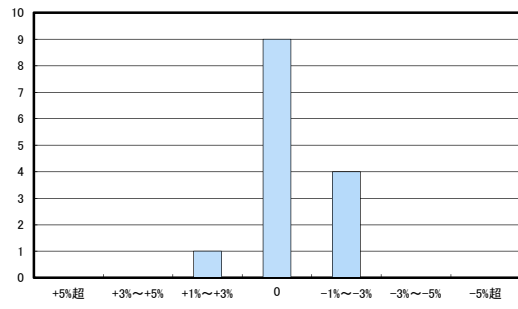


○今治市住宅地(地域別)の過去1年間の地価動向について

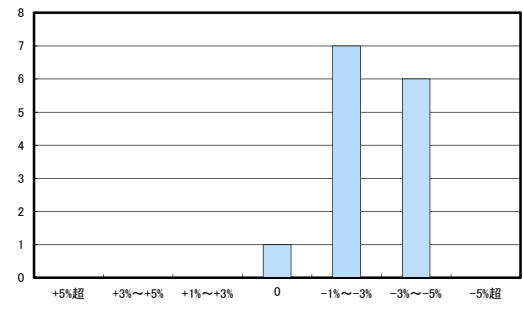
■ H29.10 実施



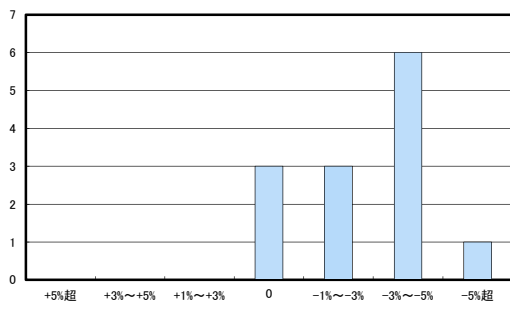
富田小学校区



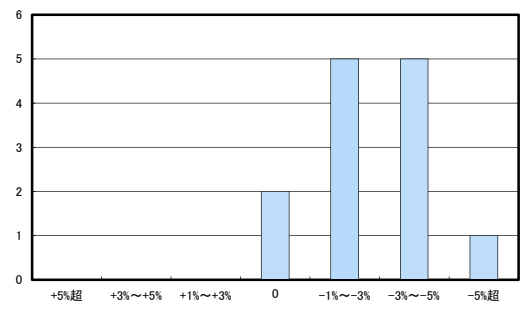
桜井小学校区



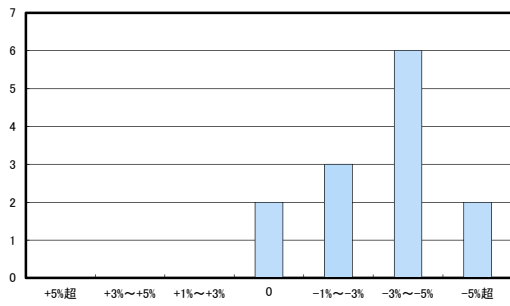
朝倉小学校区



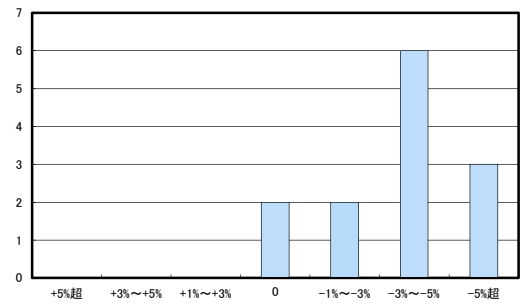
鴨部・九和小学校区



亀岡・菊間小学校区

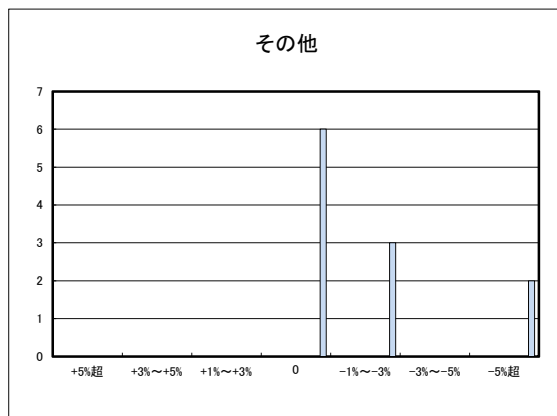
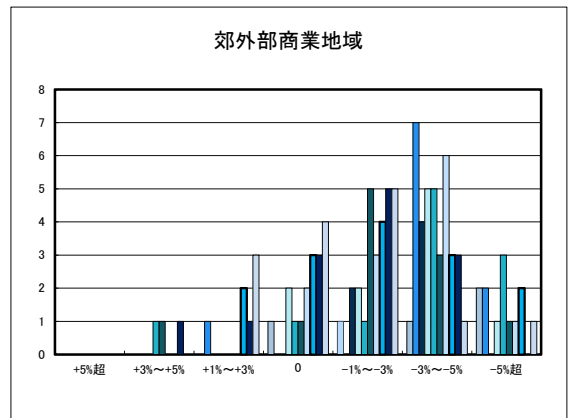
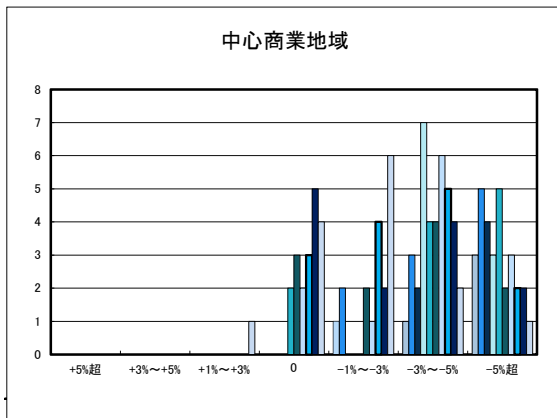


島しょ部地区



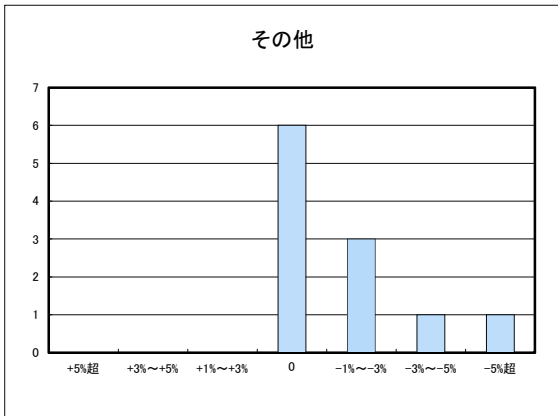
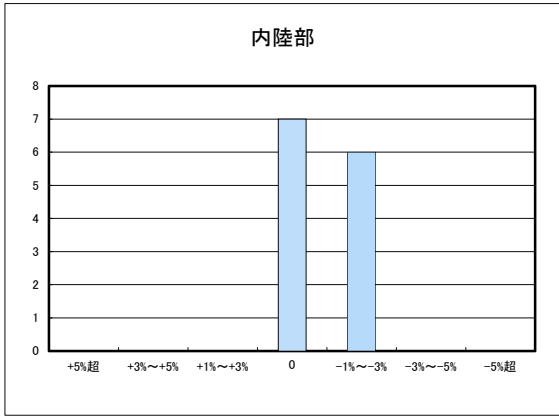
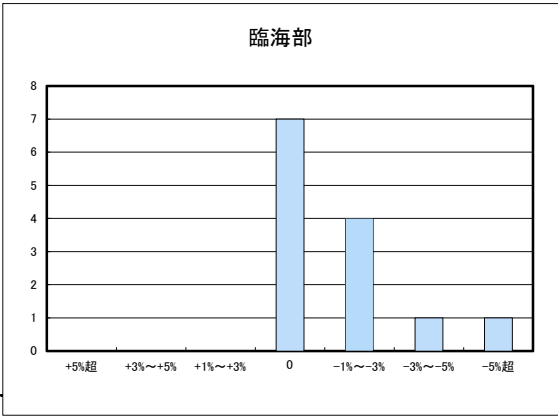


○今治市商業地(地域別)の過去1年間の地価動向について

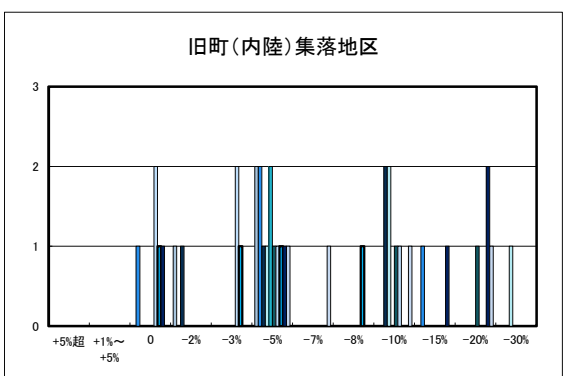
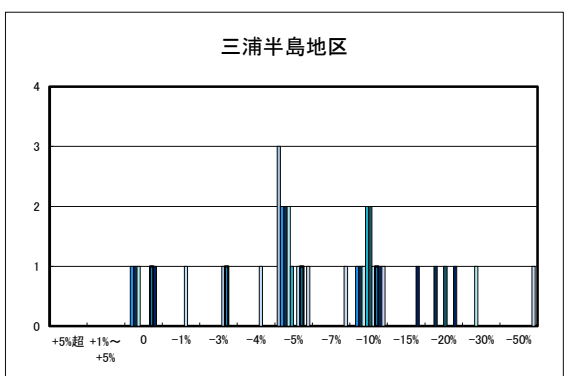
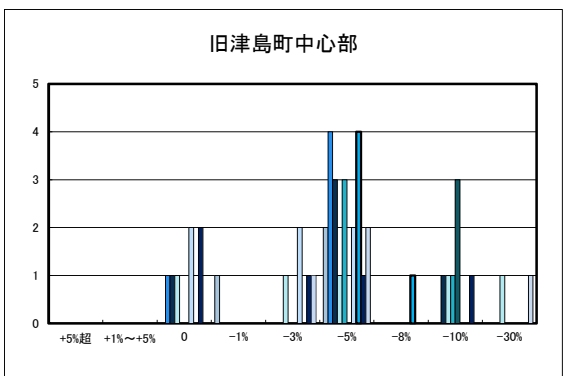
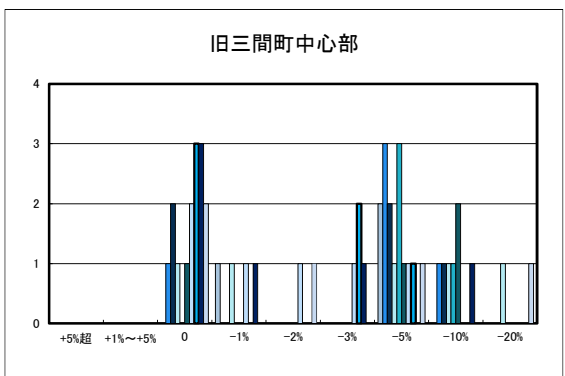
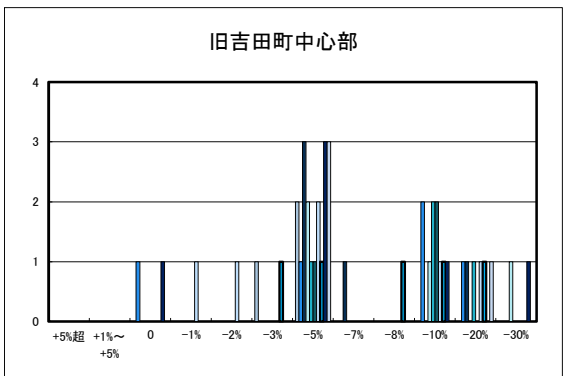
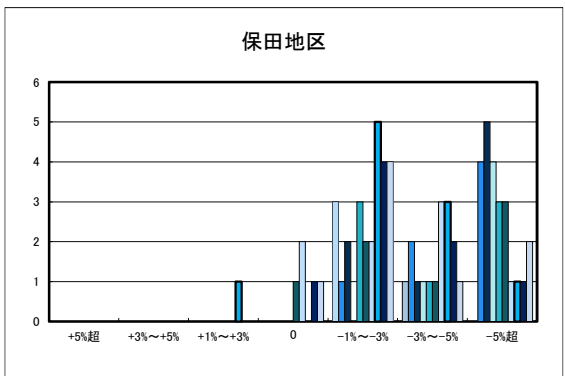
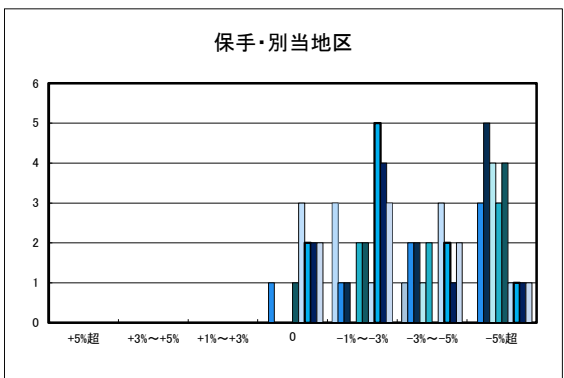
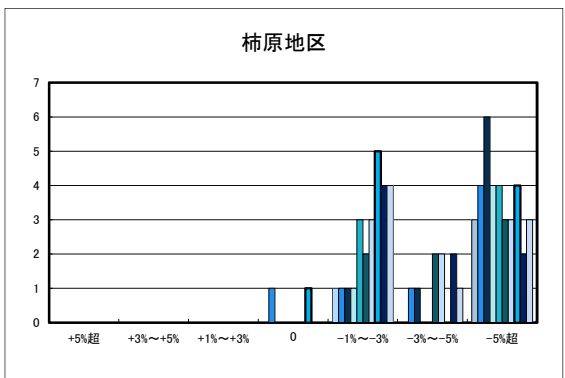
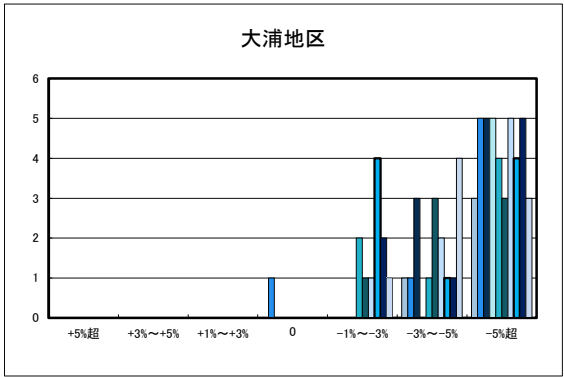
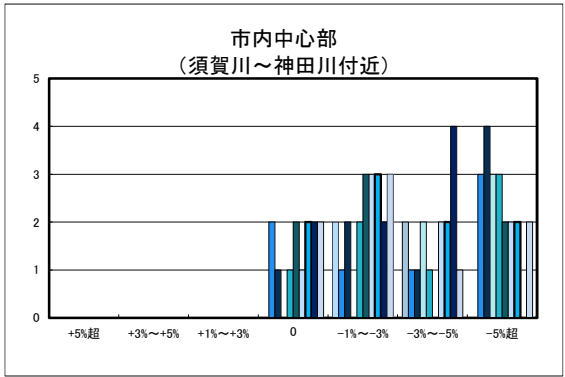
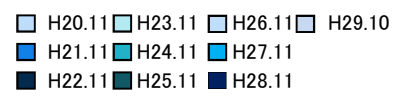


○今治市工業地(地域別)の過去1年間の地価動向について

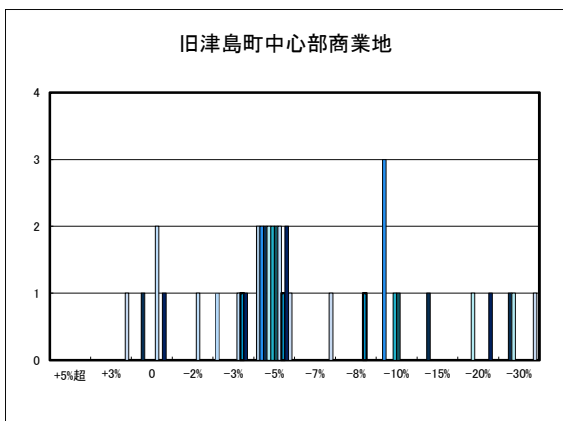
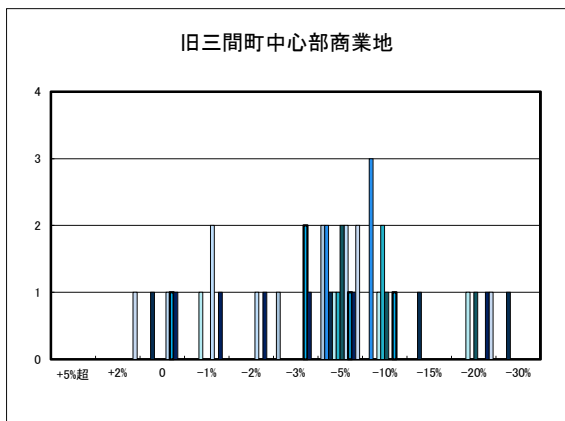
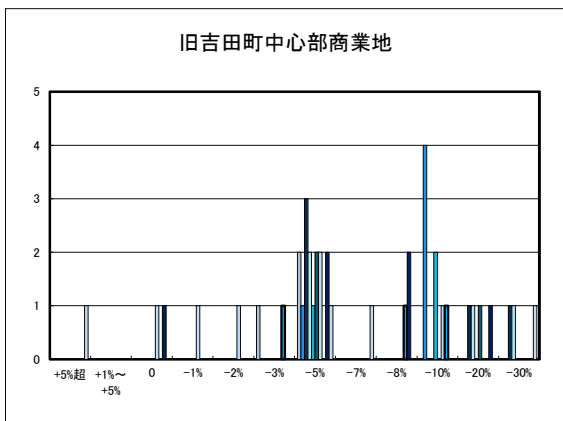
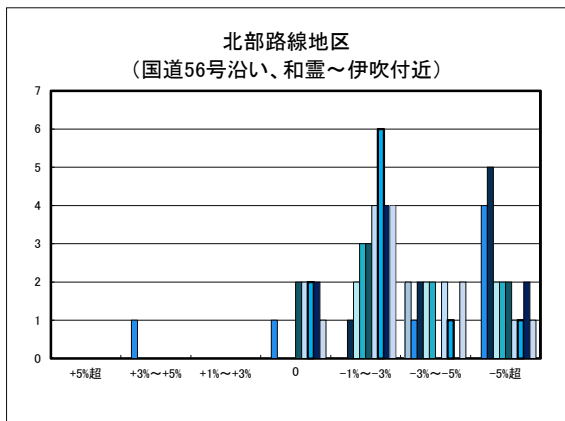
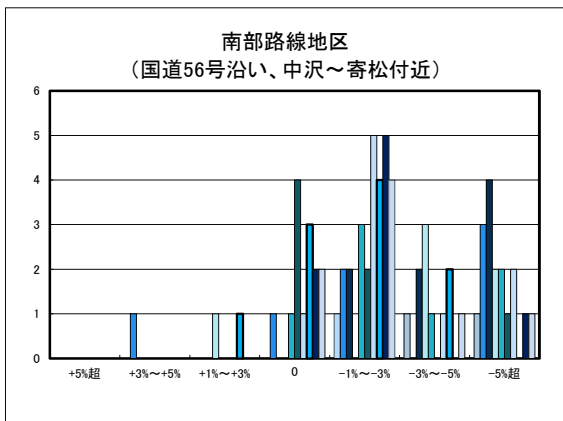
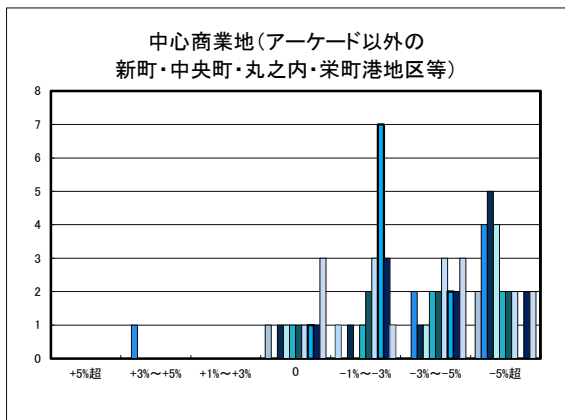
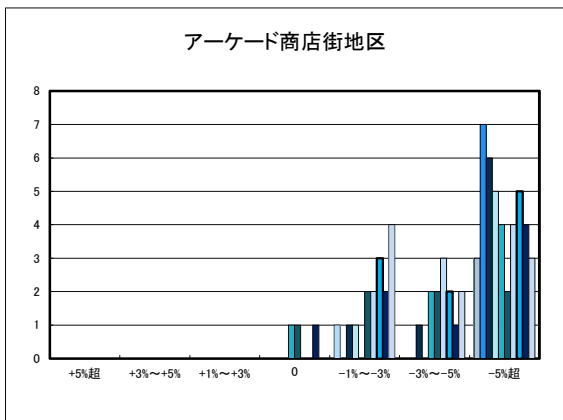
□ H29.10 実施



○宇和島市住宅地(地域別)の過去1年間の地価動向について

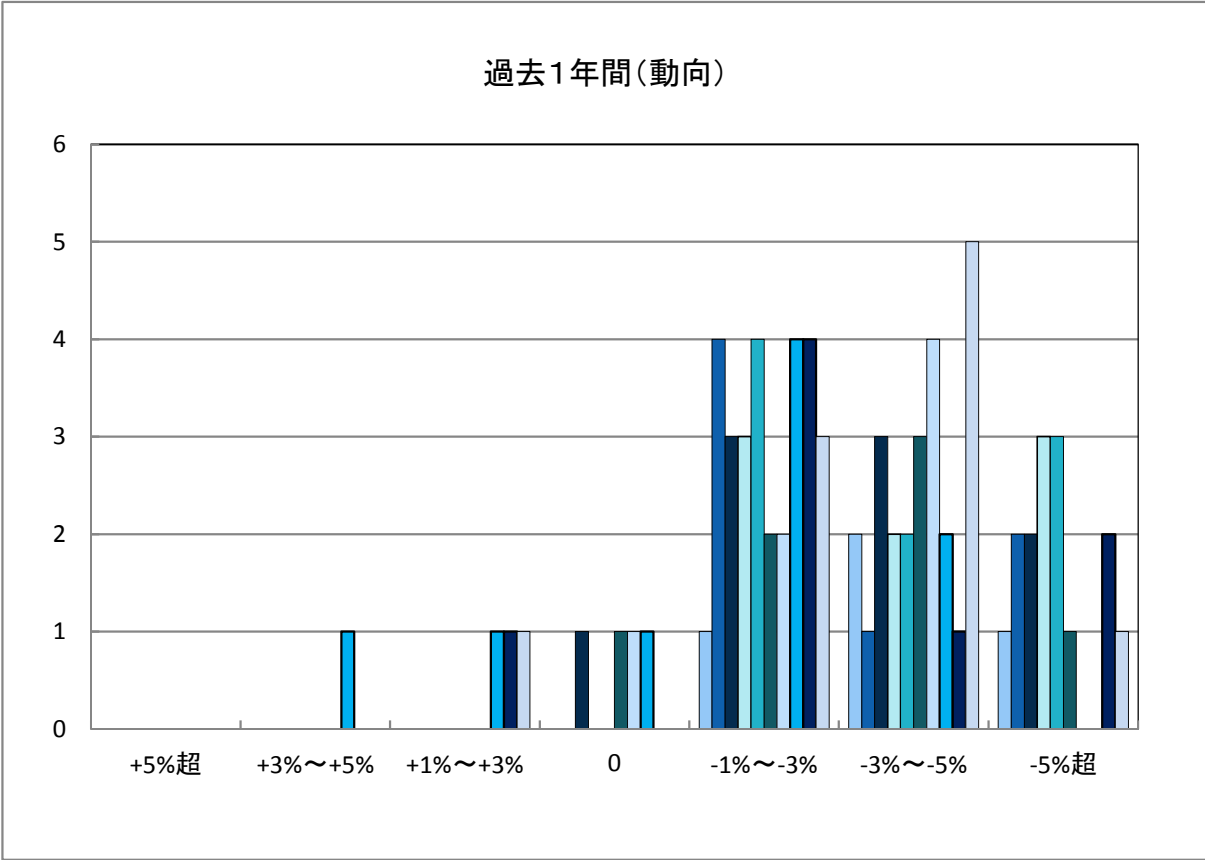


○宇和島市商業地(地域別)の過去1年間の地価動向について

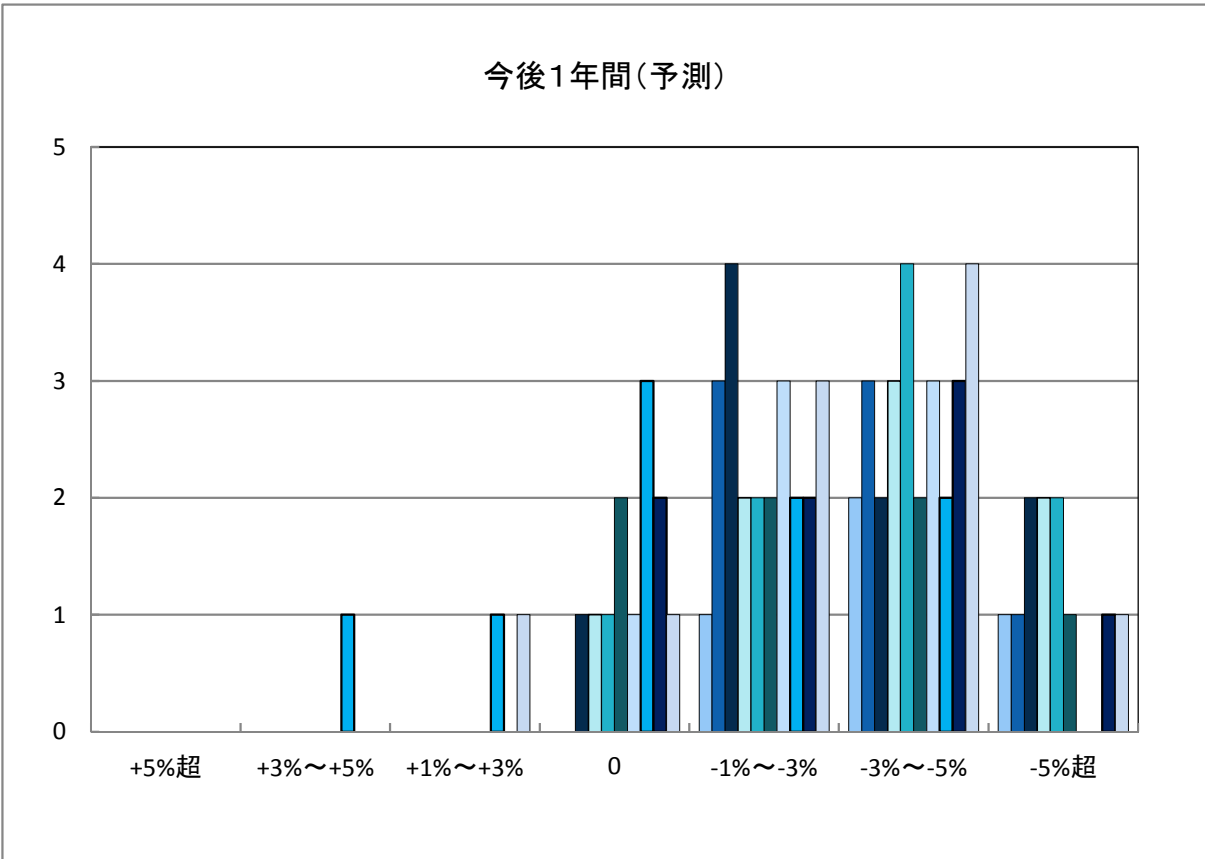


「地価動向等に関するアンケート調査」結果報告

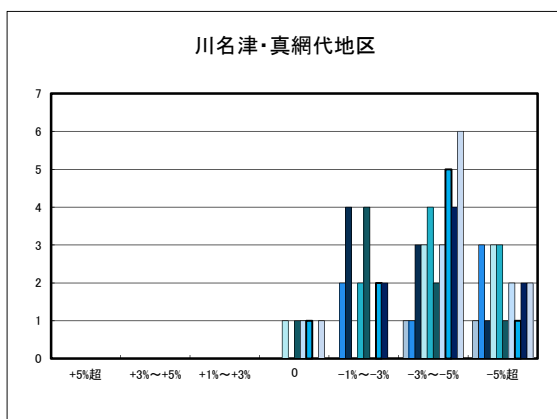
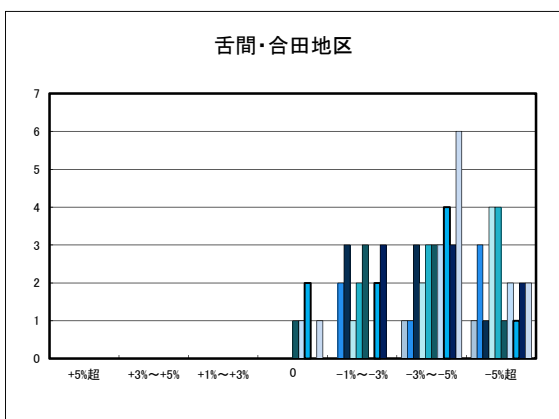
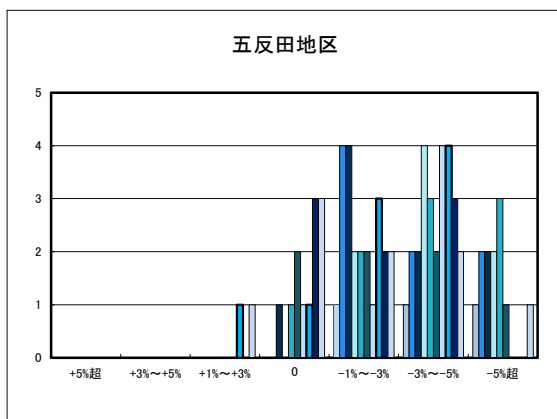
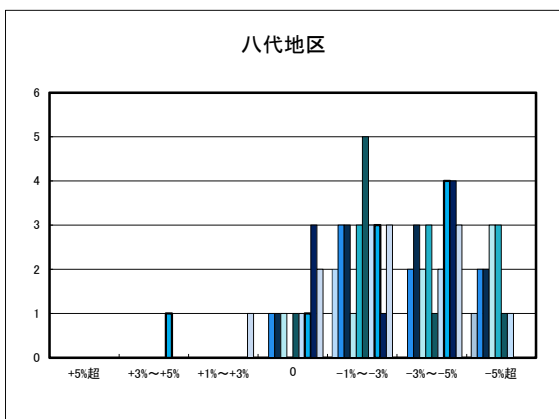
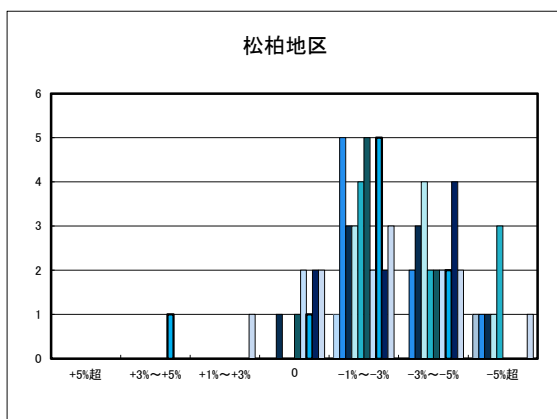
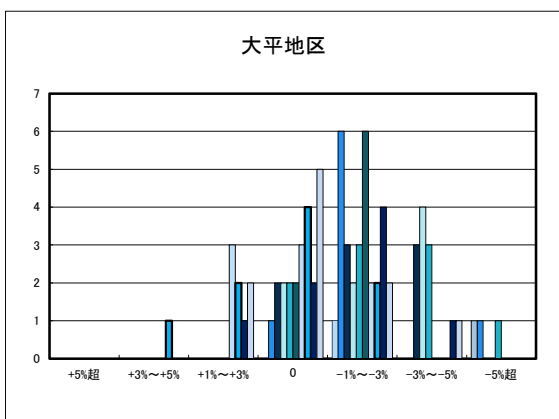
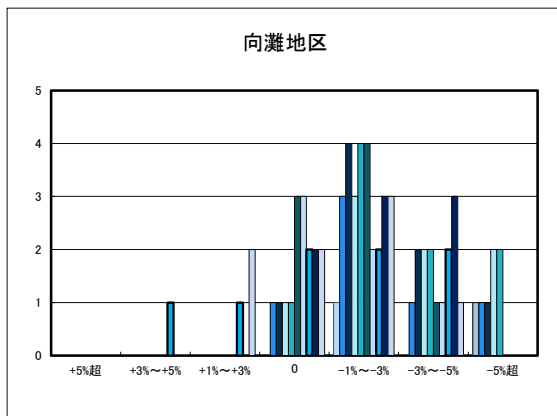
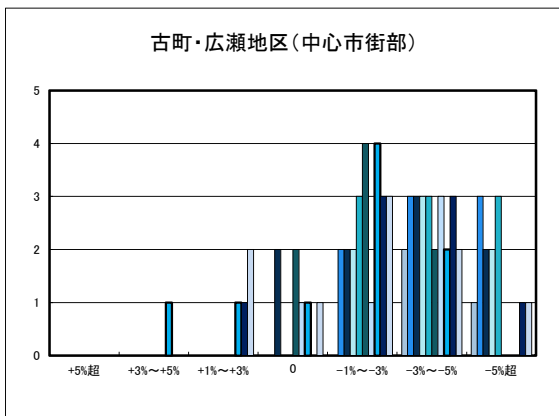
○八幡浜市の過去1年間の地価動向の実感



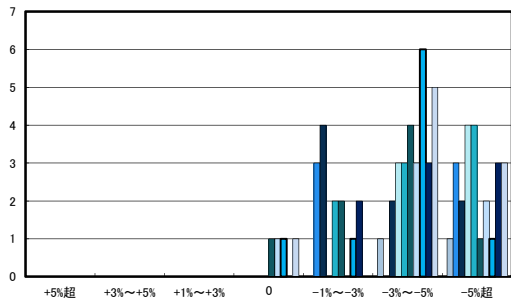
○八幡浜市の今後1年間の地価動向の予測



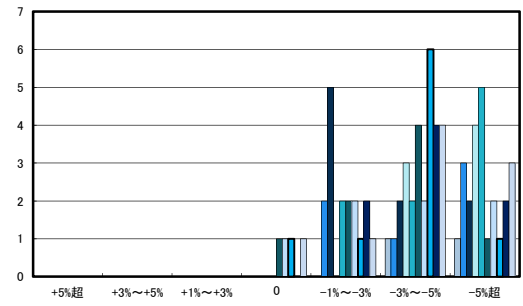
○八幡浜市住宅地(地域別)の過去1年間の地価動向について



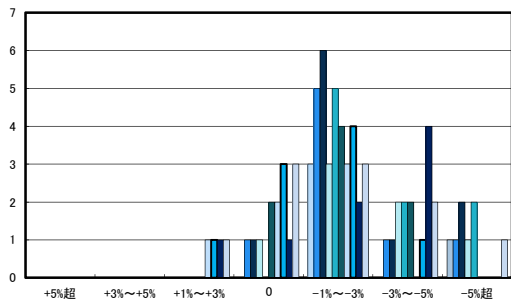
日土地区



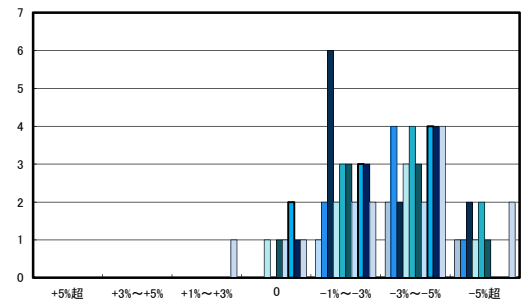
若山・布喜川地区



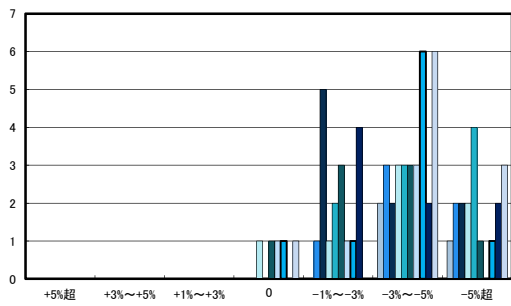
保内町(喜木・宮内)中心部



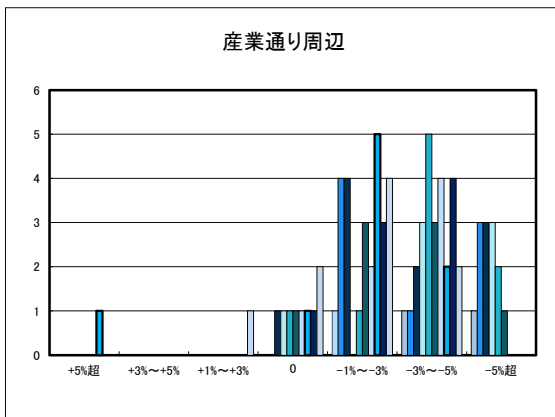
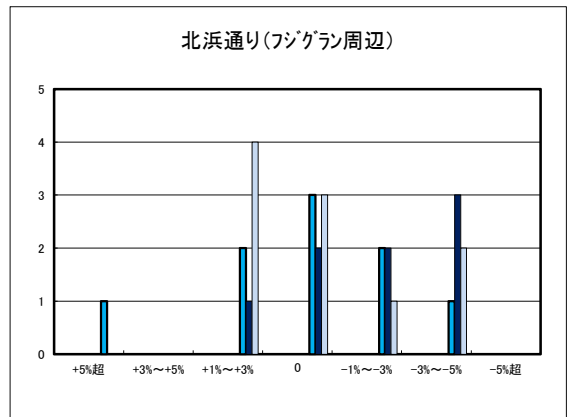
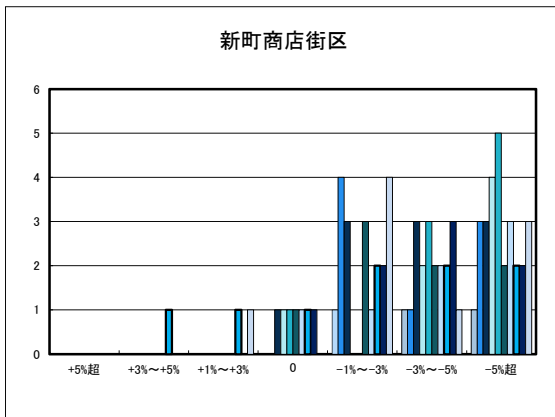
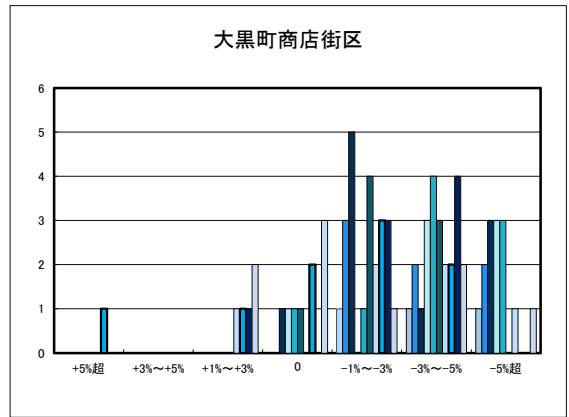
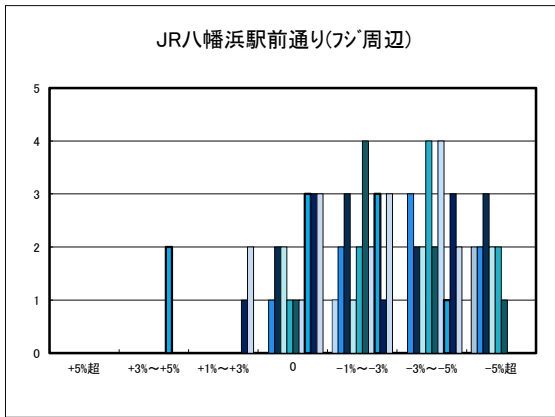
保内町川之石地区



保内町集落部

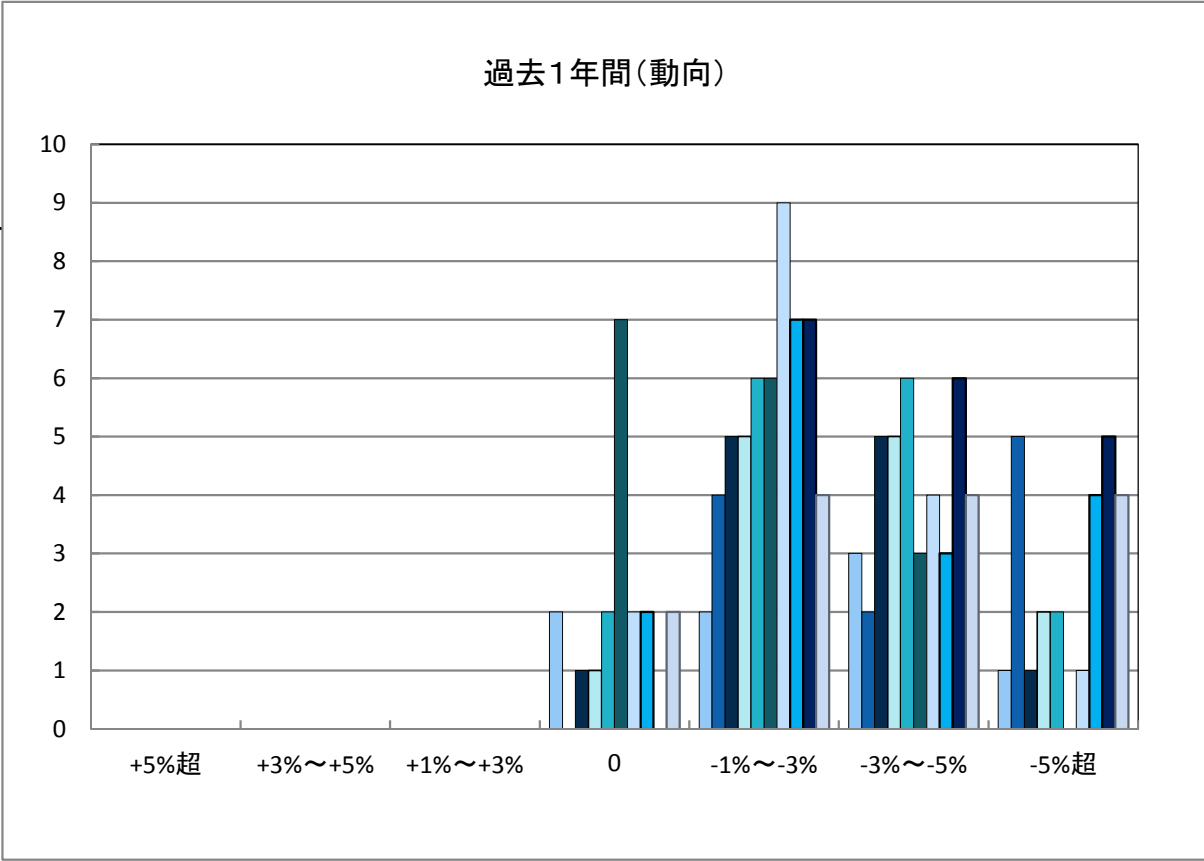
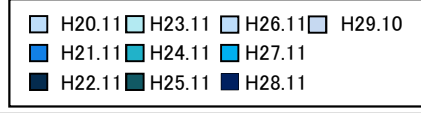


○八幡浜市商業地(地域別)の過去1年間の地価動向について

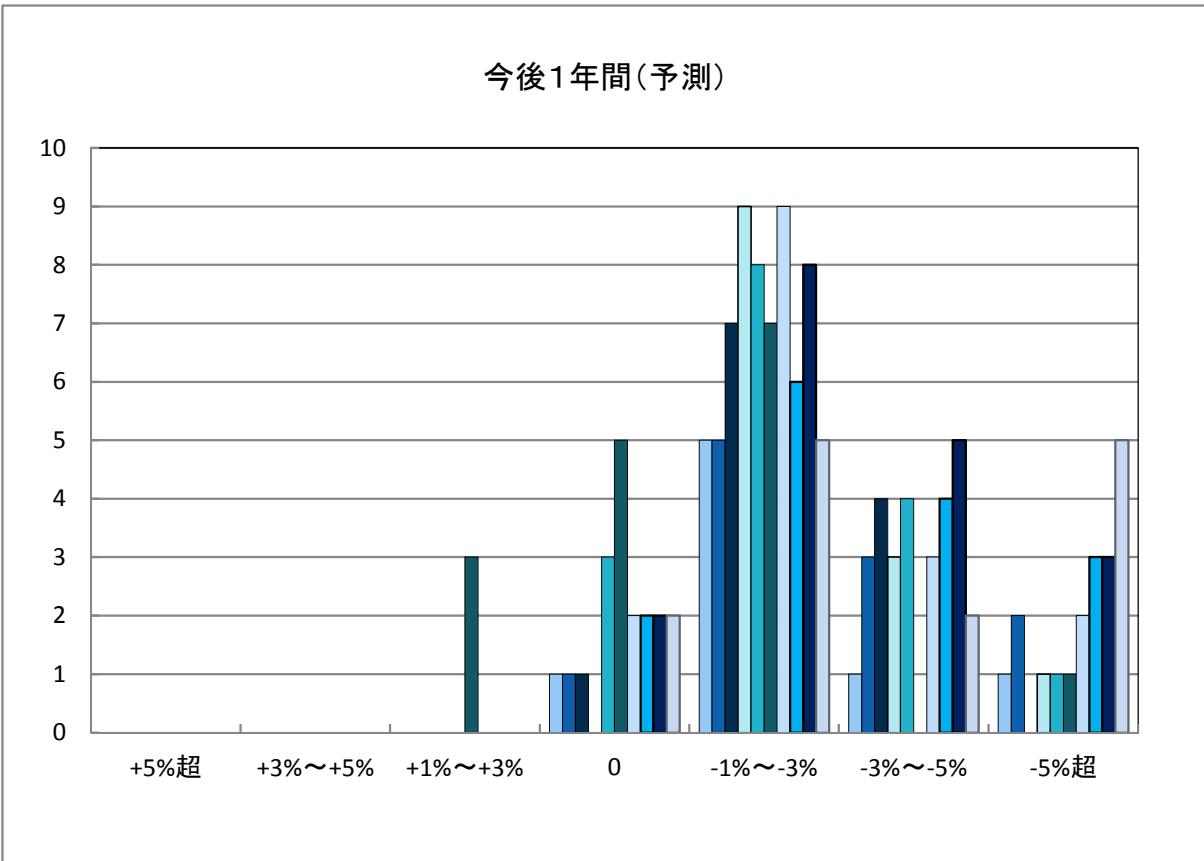


「地価動向等に関するアンケート調査」結果報告

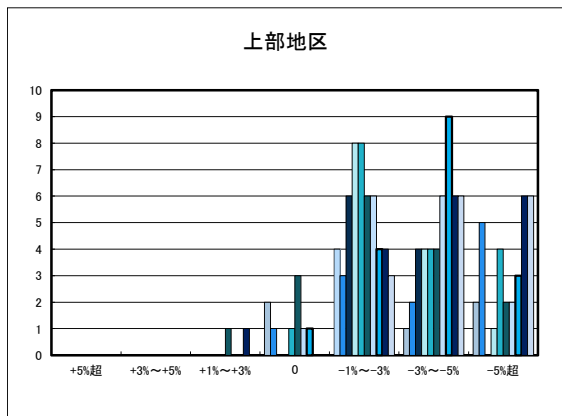
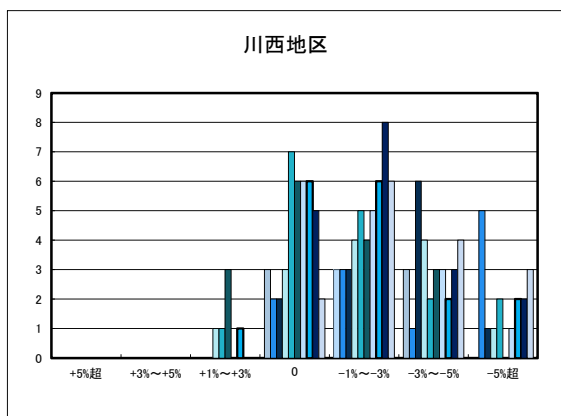
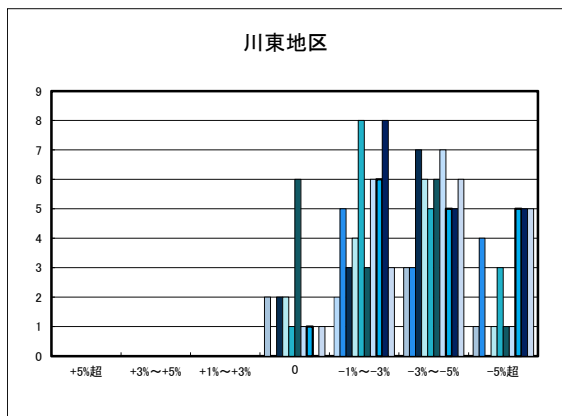
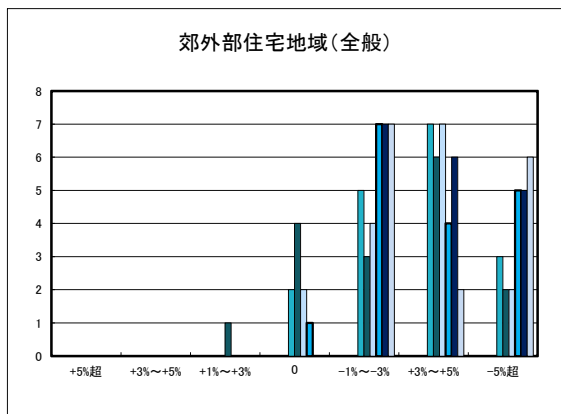
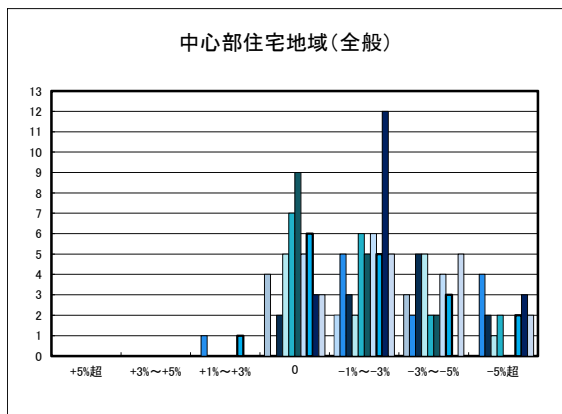
○新居浜市の過去1年間の地価動向の実感



○新居浜市の今後1年間の地価動向の予測

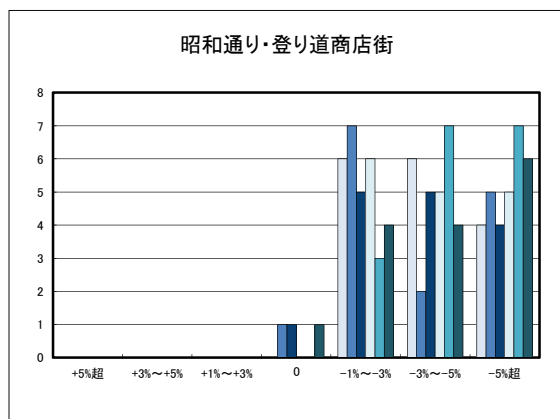
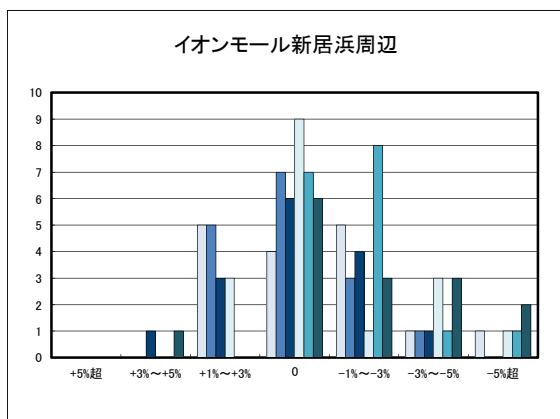
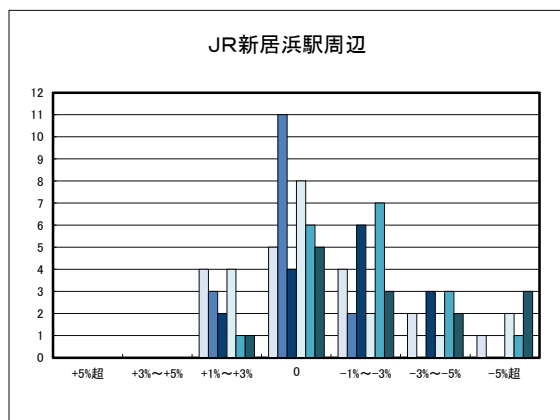
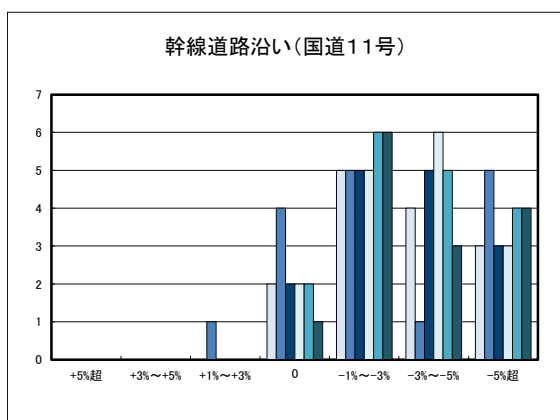
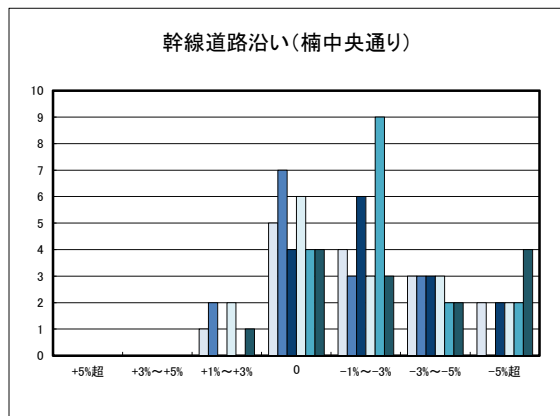
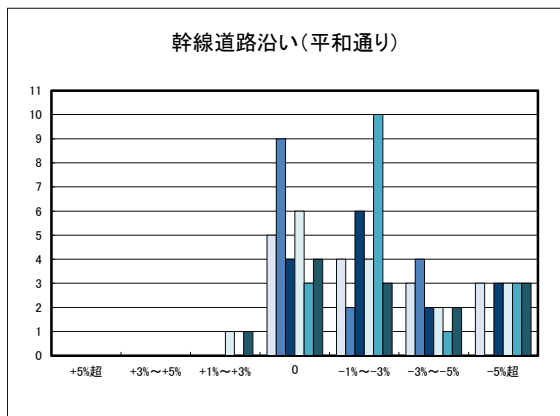


○新居浜市住宅地(地域別)の過去1年間の地価動向について



○新居浜市商業地(地域別)の過去1年間の地価動向について

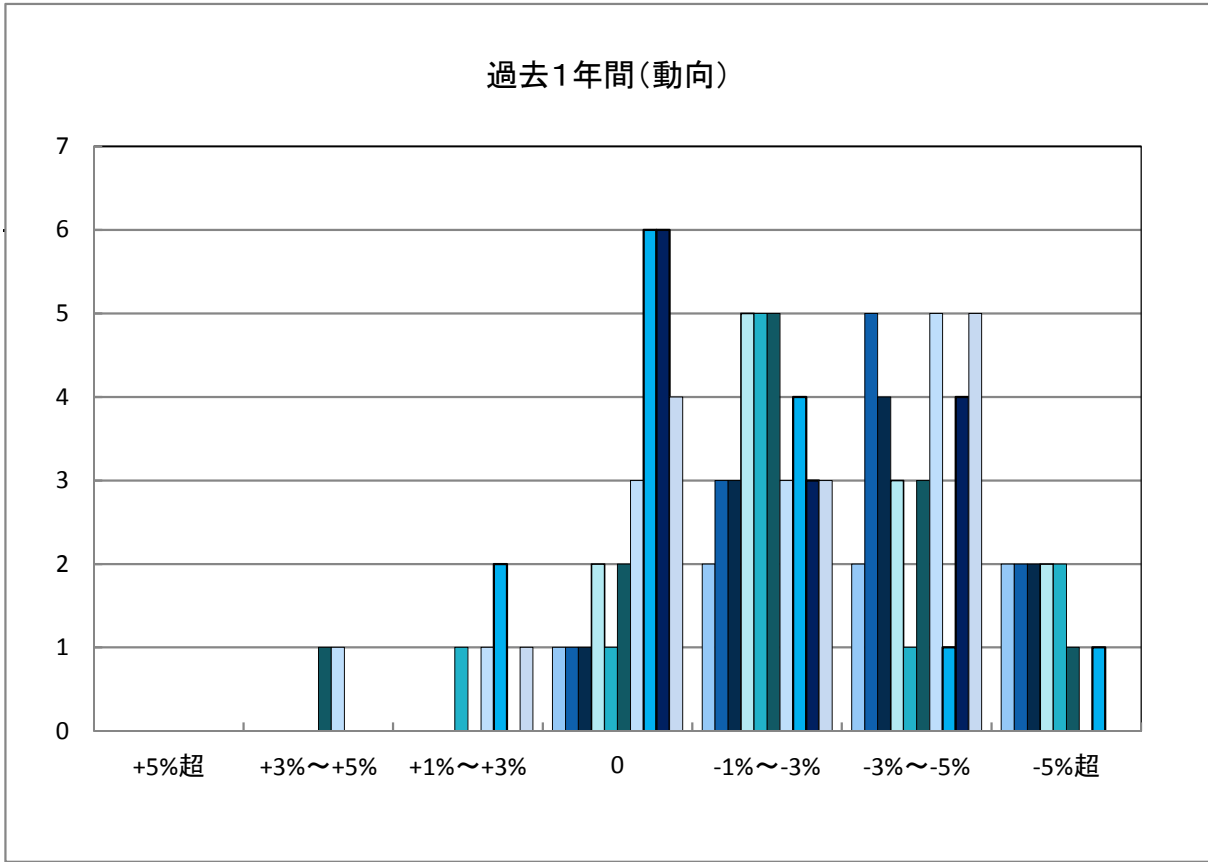
- H24.11 実施 □ H27.11 実施
- H25.11 実施 ■ H28.11 実施
- H26.11 実施 ■ H29.10 実施



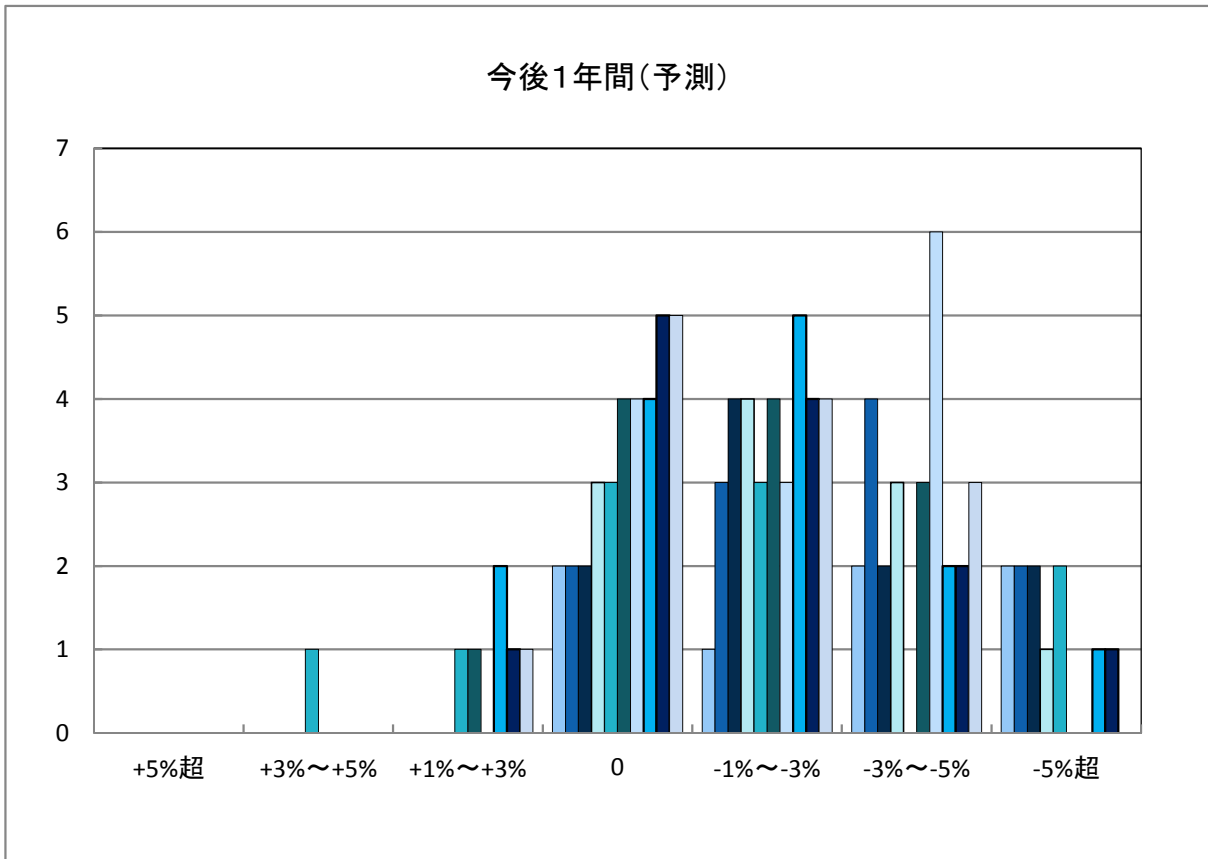
「地価動向等に関するアンケート調査」結果報告

□ H20.11	□ H23.11	□ H26.11	□ H29.10
■ H21.11	■ H24.11	■ H27.11	
■ H22.11	■ H25.11	■ H28.11	

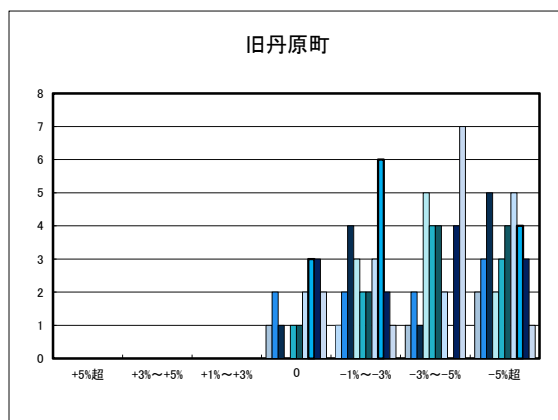
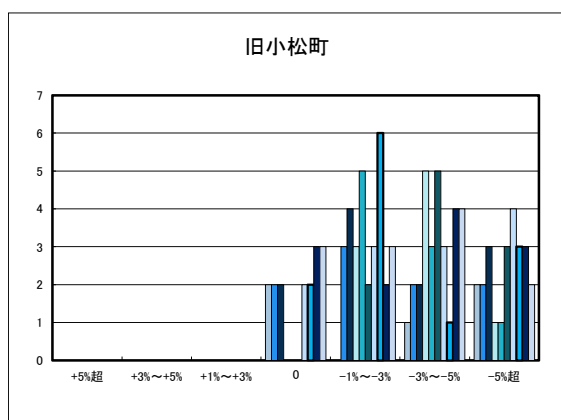
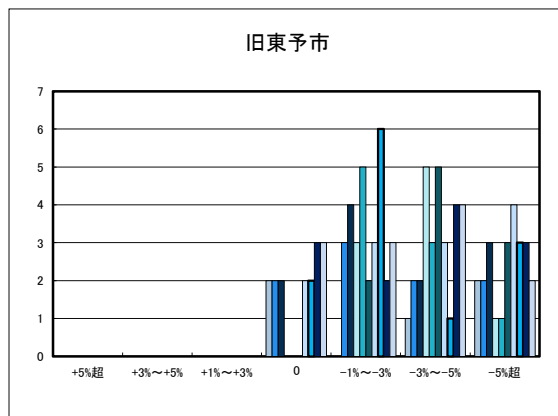
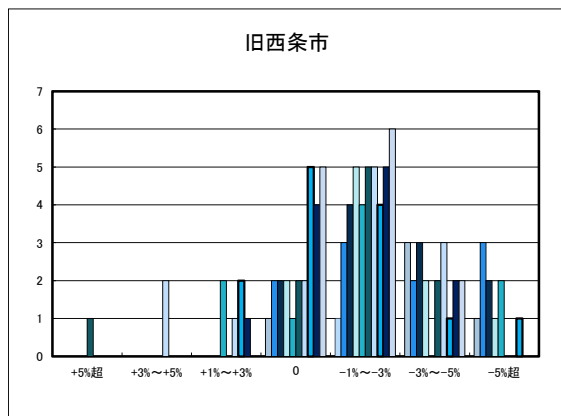
○西条市の過去1年間の地価動向の実感



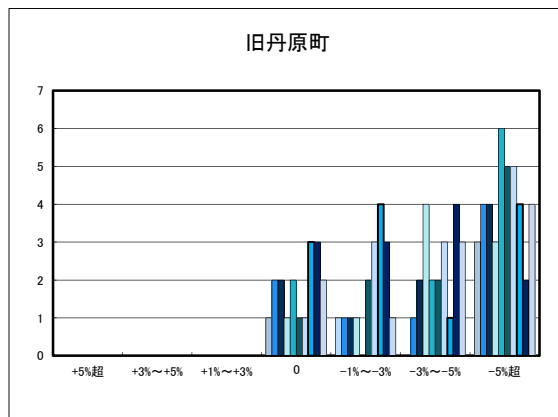
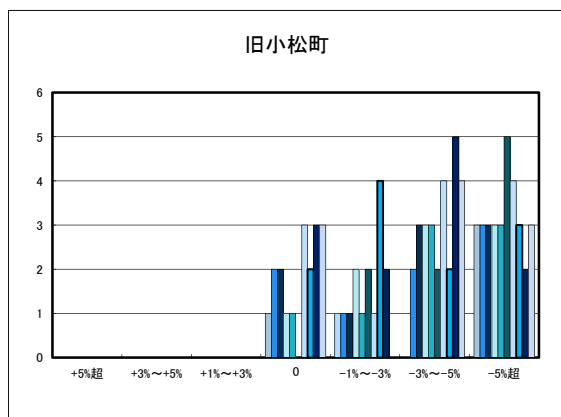
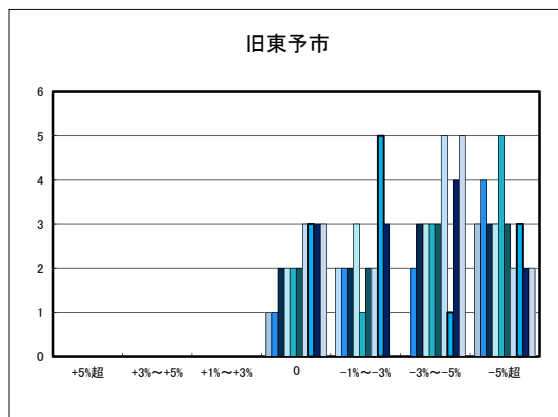
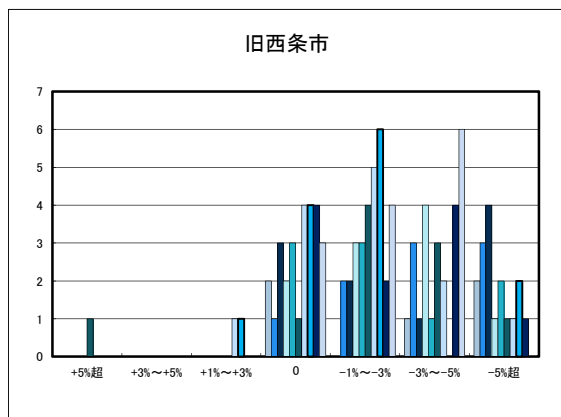
○西条市の今後1年間の地価動向の予測



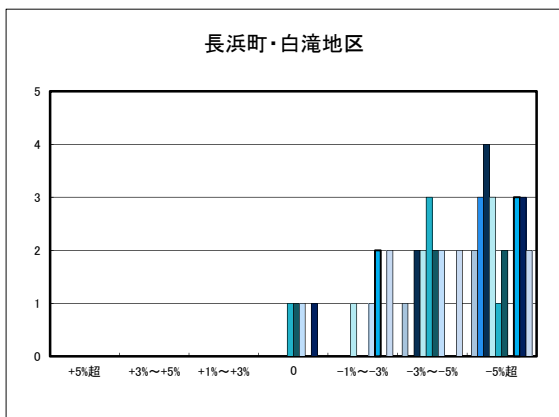
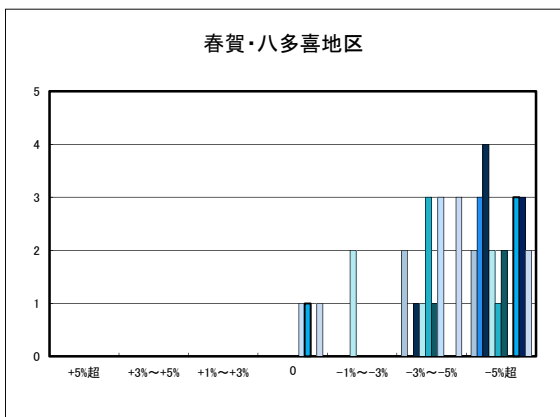
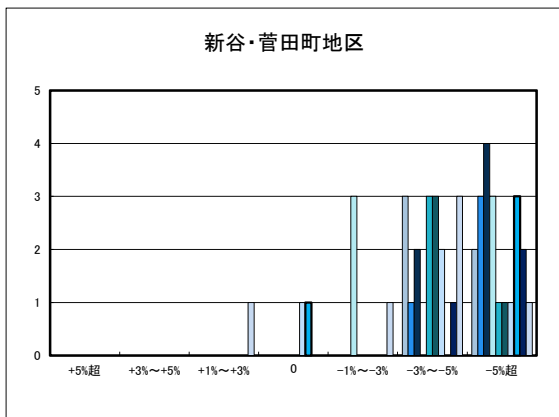
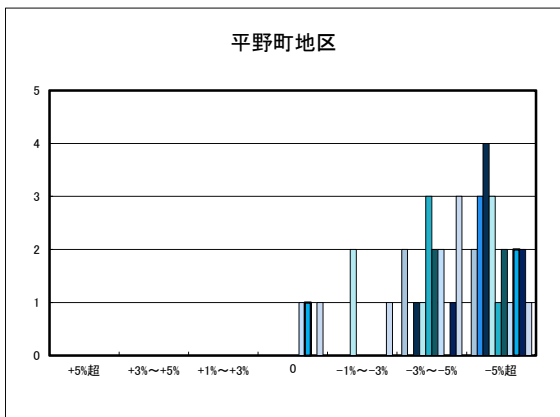
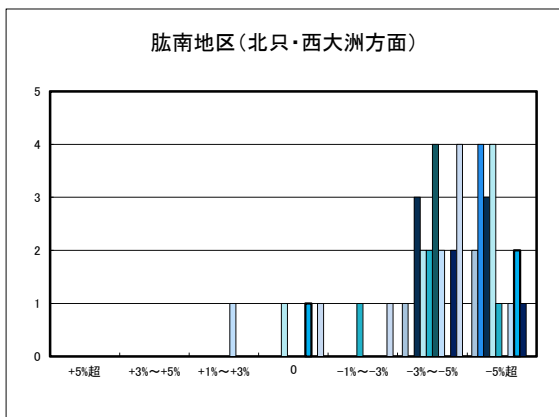
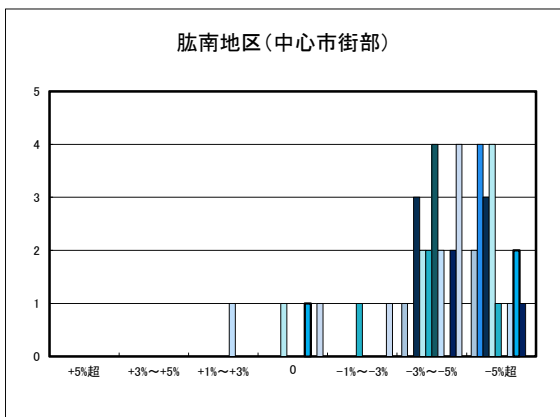
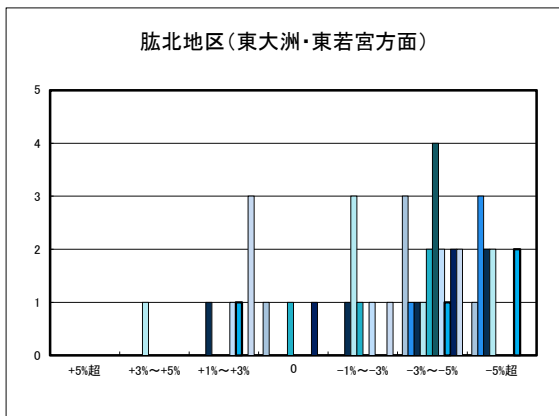
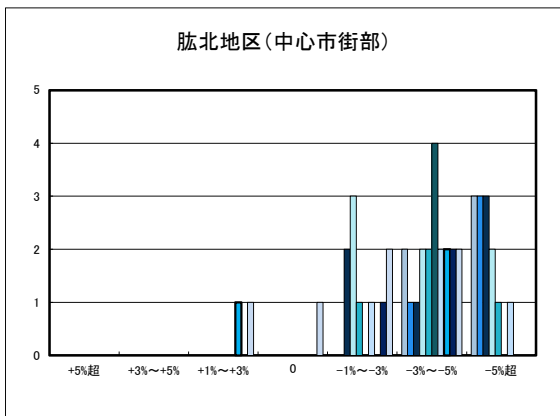
○西条市住宅地(地域別)の過去1年間の地価動向について

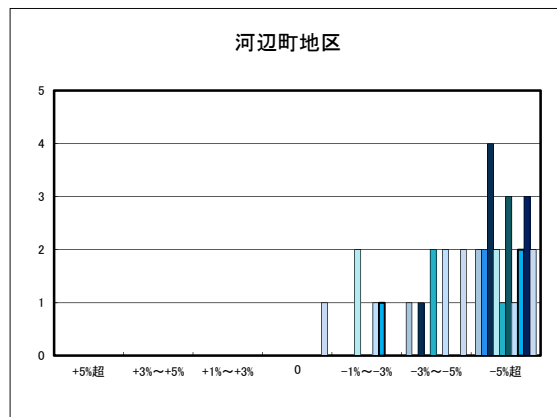
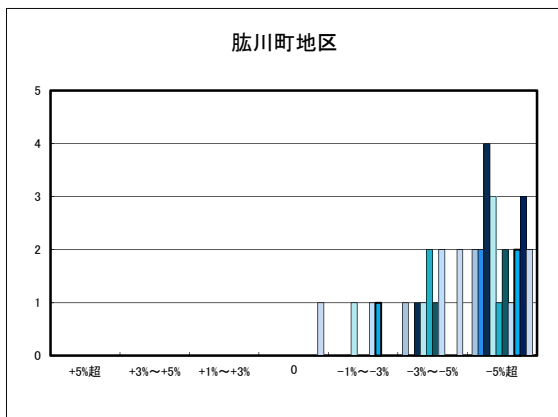


○西条市商業地(地域別)の過去1年間の地価動向について

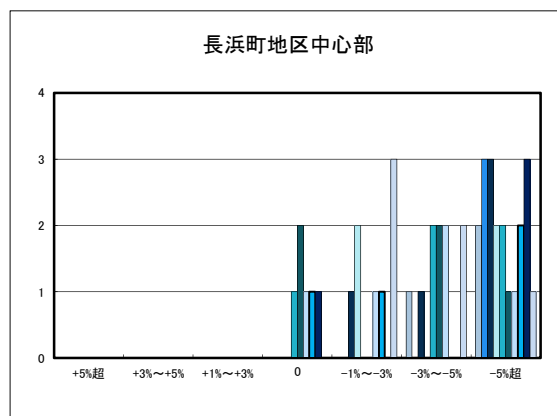
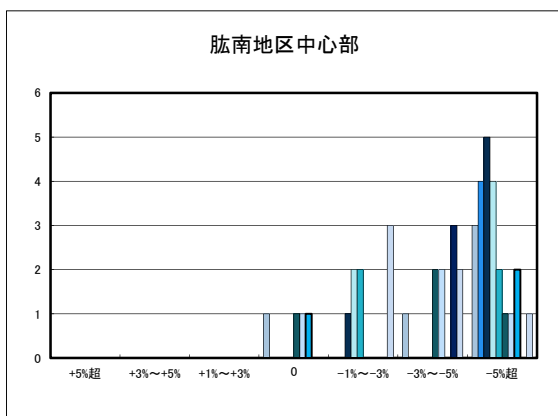
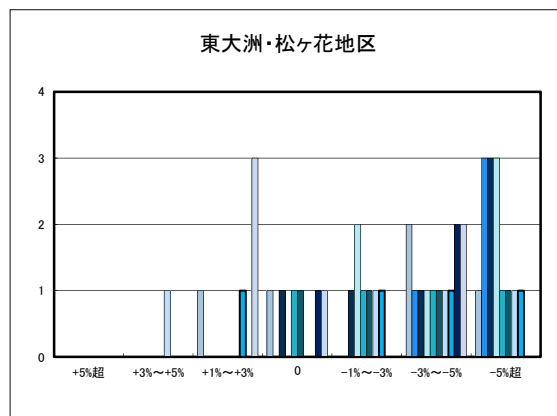
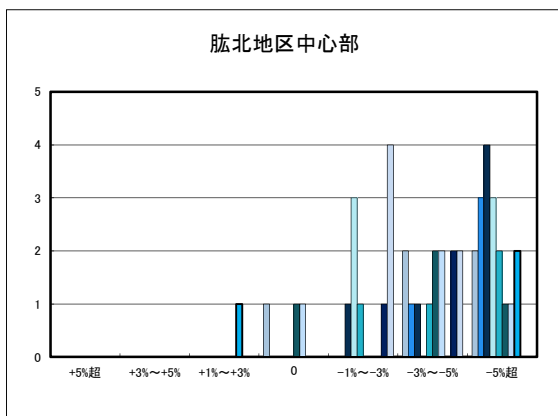


○大洲市住宅地(地域別)の過去1年間の地価動向について



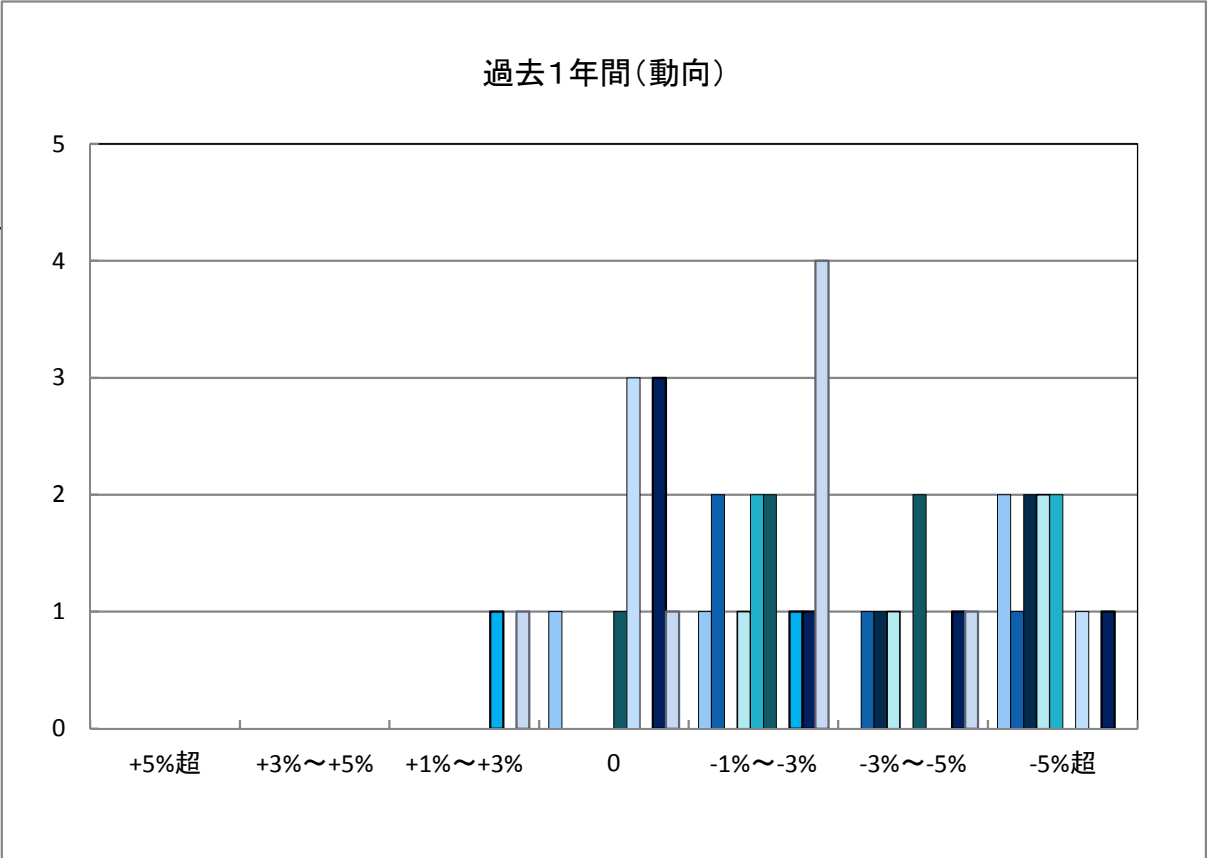


○大洲市商業地(地域別)の過去1年間の地価動向について

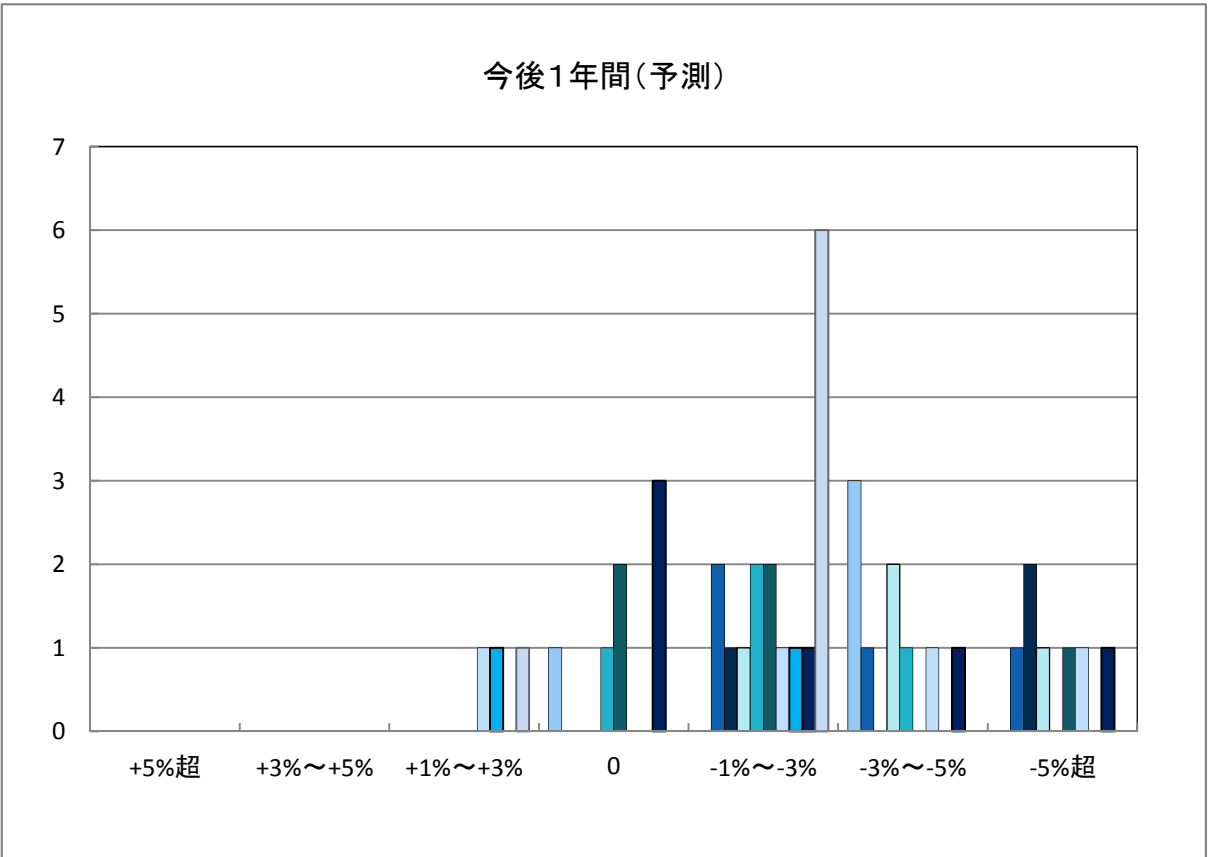


「地価動向等に関するアンケート調査」結果報告

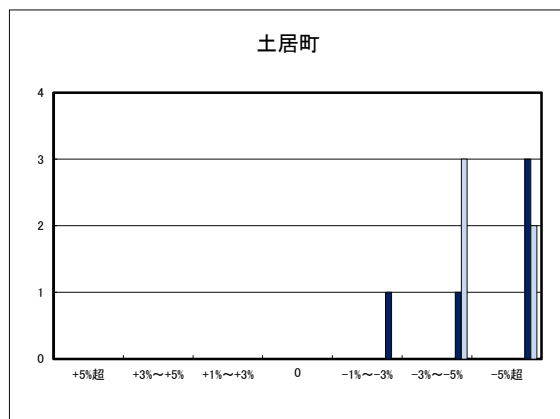
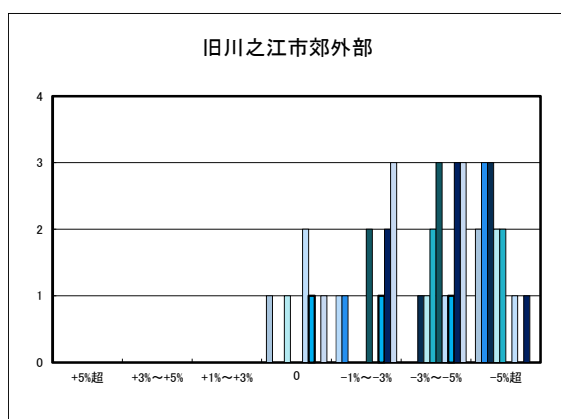
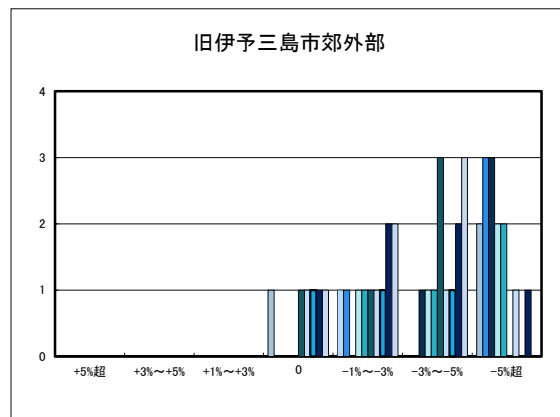
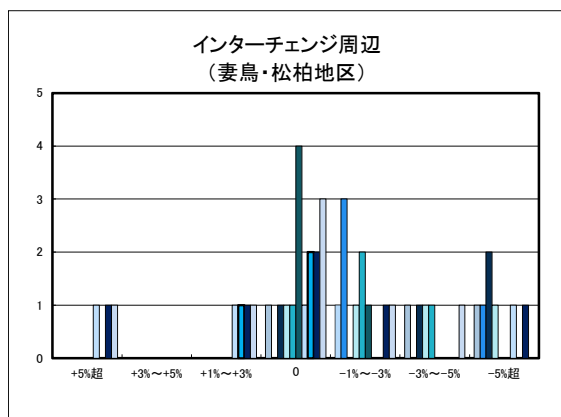
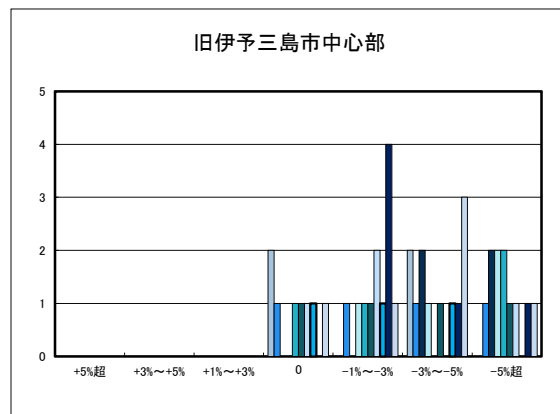
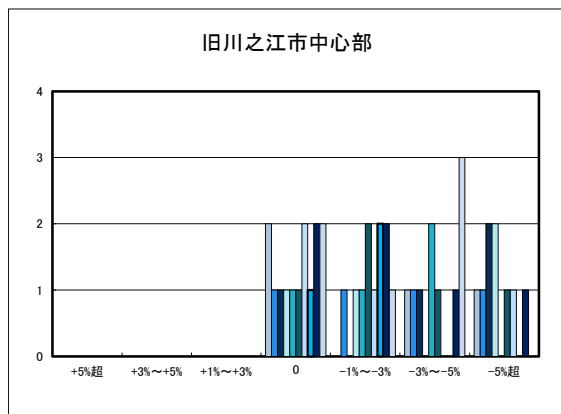
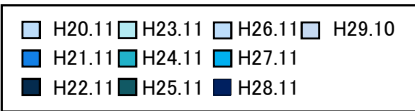
○四国中央市の過去1年間の地価動向の実感



○四国中央市の今後1年間の地価動向の予測



○四国中央市住宅地(地域別)の過去1年間の地価動向について



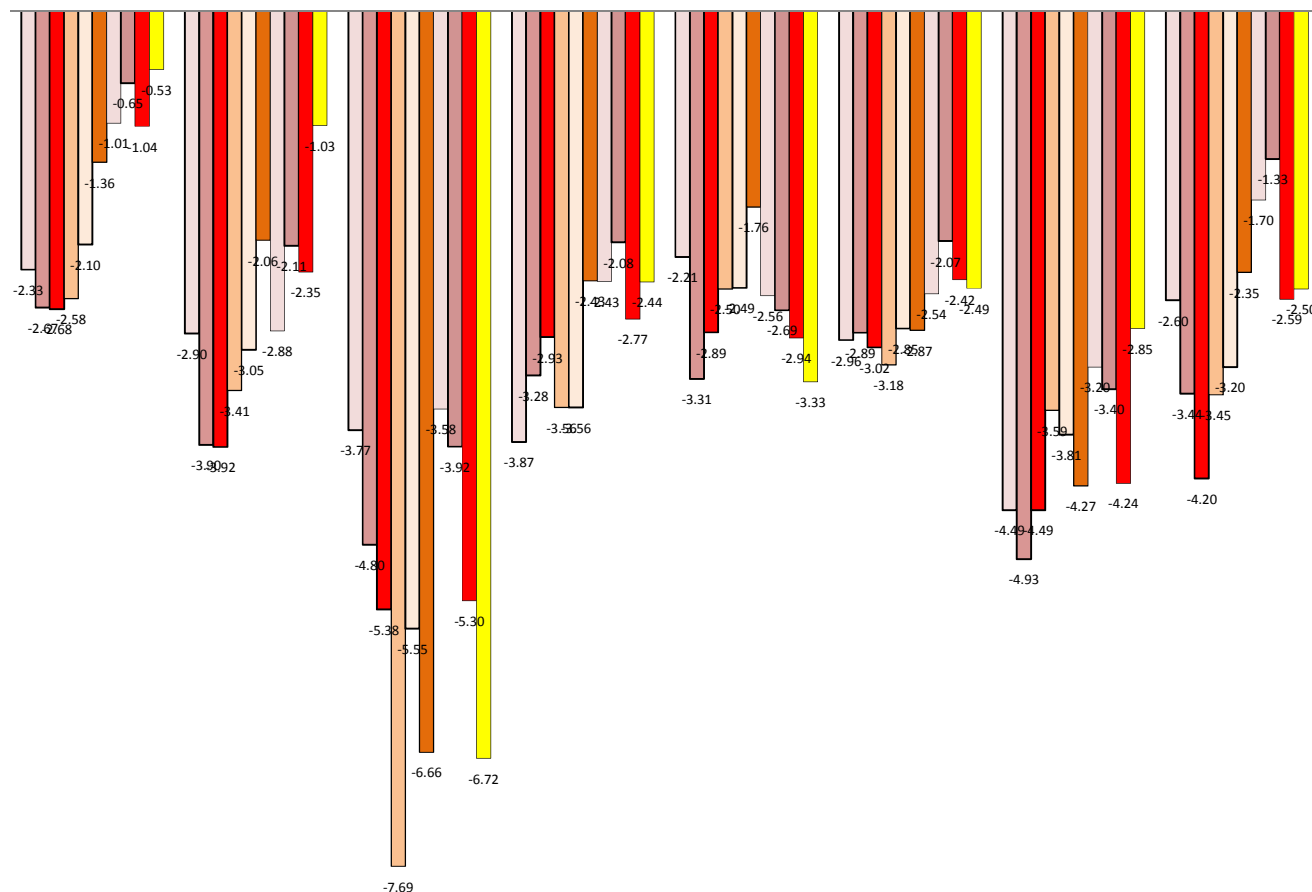
平均変動率

住宅地 平均変動率	松山市	今治市	宇和島市	八幡浜市	新居浜市	西条市	大洲市	四国中央市
H20	-2.33	-2.90	-3.77	-3.87	-2.21	-2.96	-4.49	-2.60
H21	-2.67	-3.90	-4.80	-3.28	-3.31	-2.89	-4.93	-3.44
H22	-2.68	-3.92	-5.38	-2.93	-2.89	-3.02	-4.49	-4.20
H23	-2.58	-3.41	-7.69	-3.56	-2.50	-3.18	-3.59	-3.45
H24	-2.10	-3.05	-5.55	-3.56	-2.49	-2.85	-3.81	-3.20
H25	-1.36	-2.06	-6.66	-2.43	-1.76	-2.87	-4.27	-2.35
H26	-1.01	-2.88	-3.58	-2.43	-2.56	-2.54	-3.20	-1.70
H27	-0.65	-2.11	-3.92	-2.08	-2.69	-2.07	-3.40	-1.33
H28	-1.04	-2.35	-5.30	-2.77	-2.94	-2.42	-4.24	-2.59
H29	-0.53	-1.03	-6.72	-2.44	-3.33	-2.49	-2.85	-2.50

住宅地

□ H20 ■ H21 ■ H22 ■ H23 □ H24 ■ H25 ■ H26 ■ H27 ■ H28 ■ H29

松山市 今治市 宇和島市 八幡浜市 新居浜市 西条市 大洲市 四国中央市



平均變動率

商業地 平均變動率	松山市	今治市	宇和島市	八幡浜市	新居浜市	西条市	大洲市	四国中央市
H20	-0.89	-3.70	-3.57	-3.75	-2.61	-3.19	-3.57	-2.56
H21	-2.08	-4.08	-4.06	-3.36	-3.74	-3.34	-4.88	-3.85
H22	-1.99	-4.00	-7.61	-3.05	-2.66	-3.11	-3.57	-4.25
H23	-1.81	-3.60	-7.36	-3.64	-2.00	-3.16	-3.71	-4.31
H24	-1.44	-3.36	-5.28	-3.67	-2.00	-3.30	-3.46	-4.19
H25	-0.43	-2.41	-5.22	-2.75	-1.26	-3.23	-2.96	-3.55
H26	0.08	-3.17	-2.97	-2.95	-2.07	-2.80	-2.81	-2.44
H27	0.75	-2.29	-3.73	-0.82	-1.88	-2.36	-2.81	-1.50
H28	0.18	-1.77	-4.30	-2.35	-2.44	-2.61	-3.44	-2.18
H29	0.95	-1.24	-5.64	-1.35	-2.44	-2.99	-2.33	-2.55

