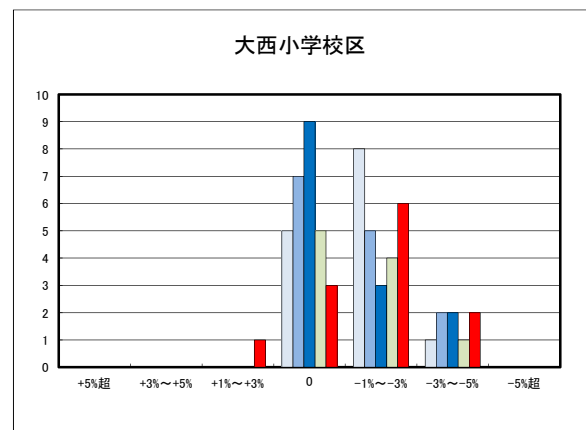
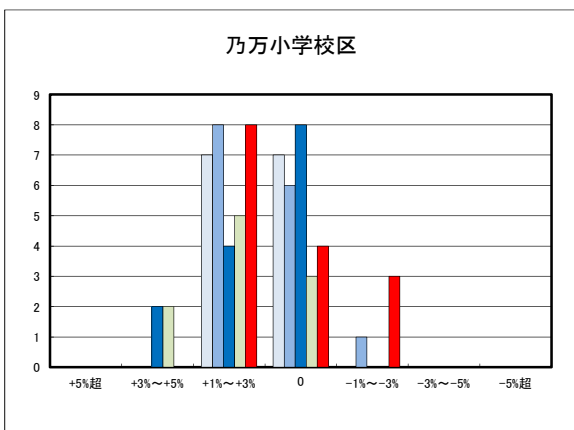
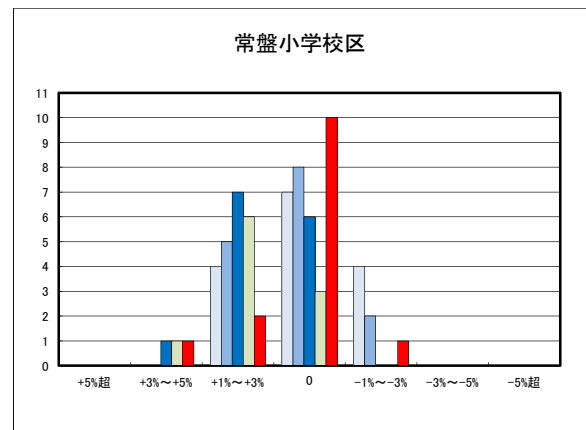
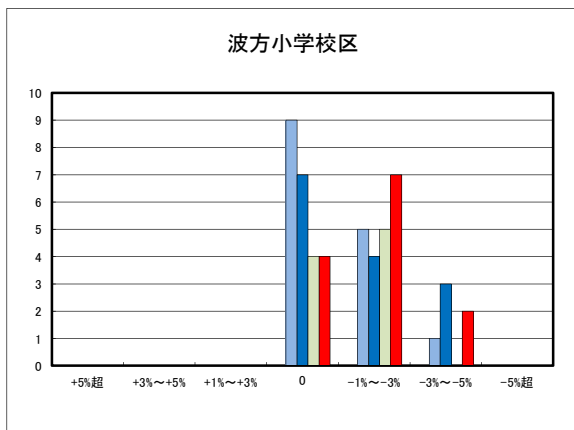
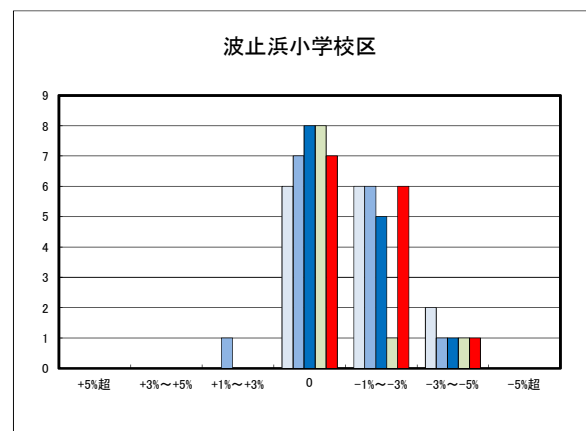
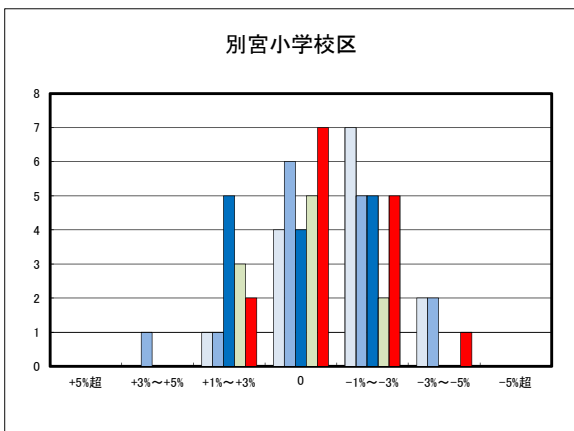
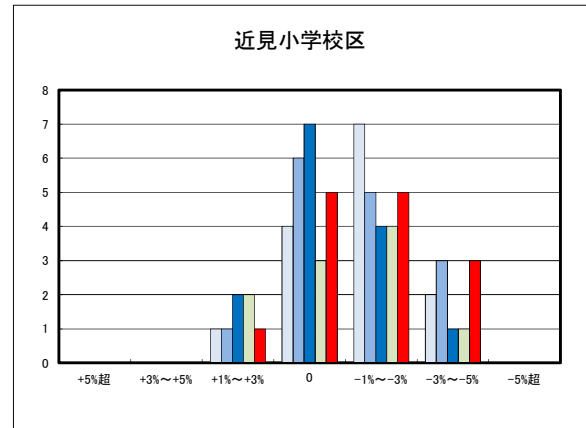
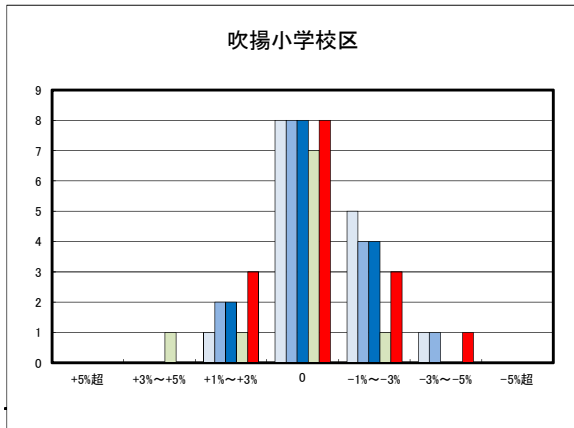
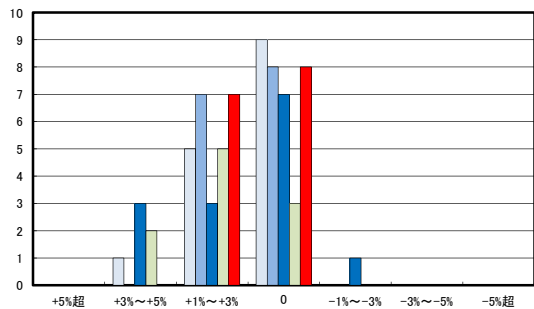


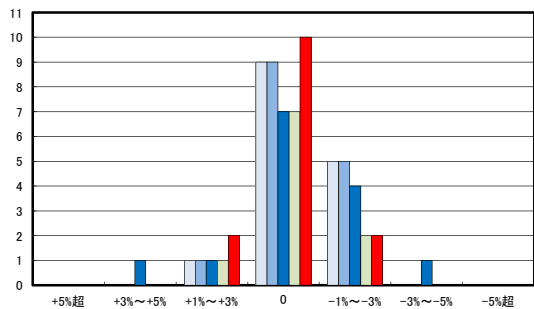
○今治市住宅地(地域別)の過去1年間の地価動向について



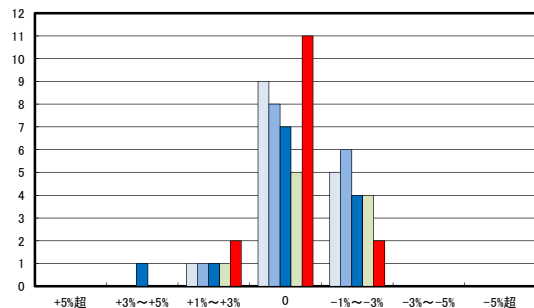
日高小学校区



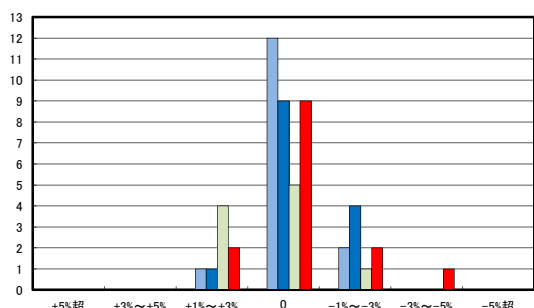
立花小学校区



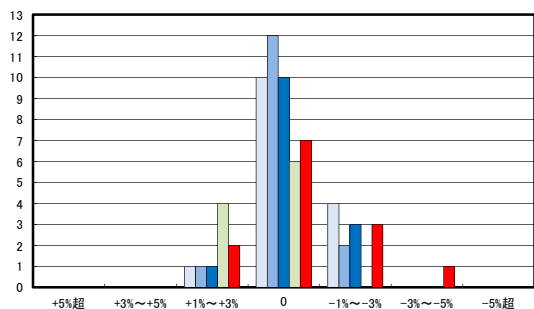
鳥生小学校区



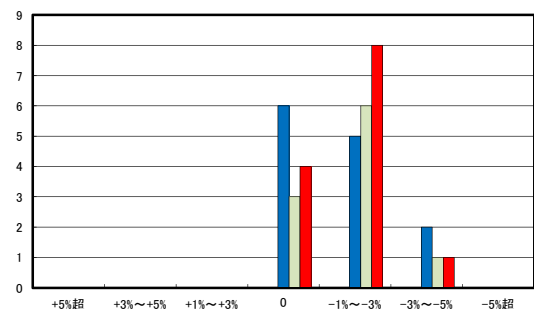
清水小学校区



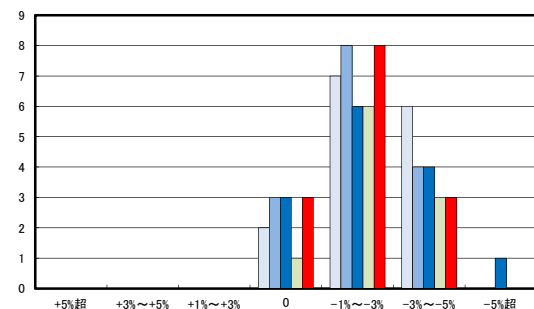
富田小学校区



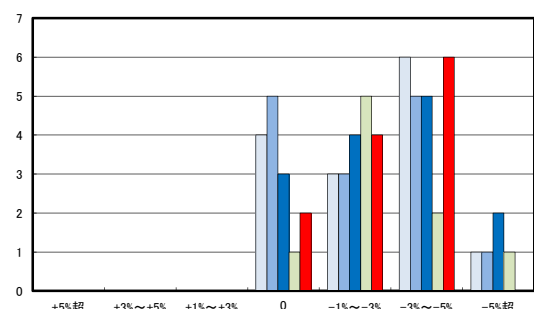
国分小学校区



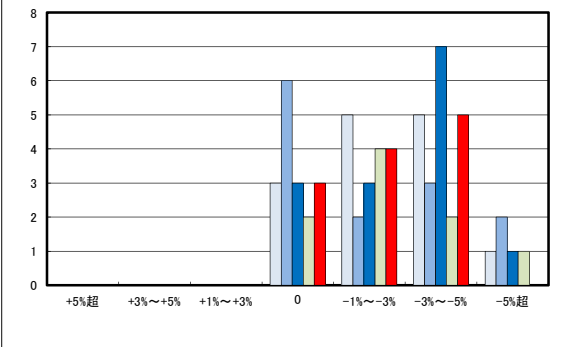
桜井小学校区



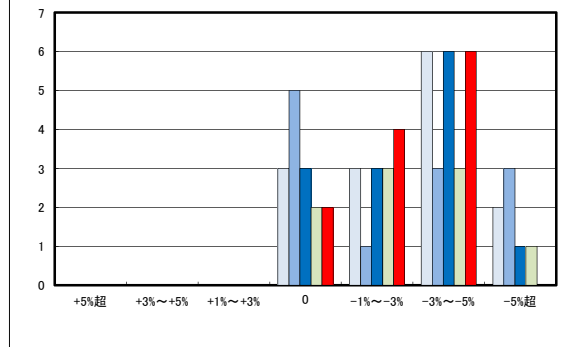
朝倉小学校区



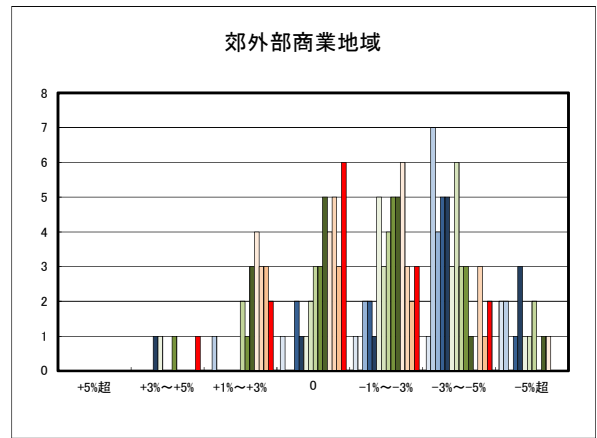
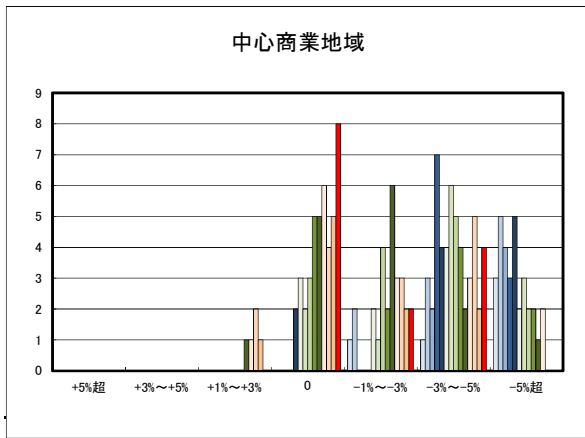
鴨部・九和小学校区



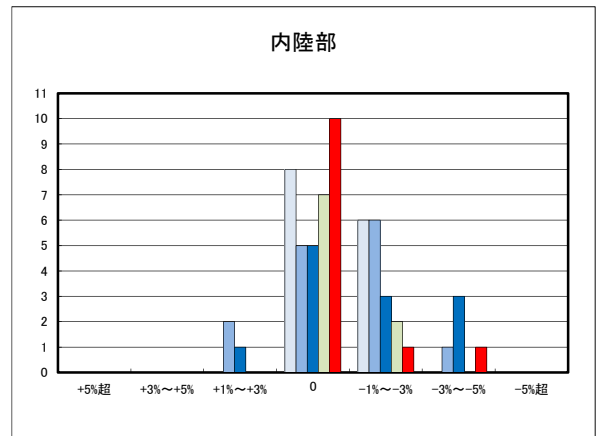
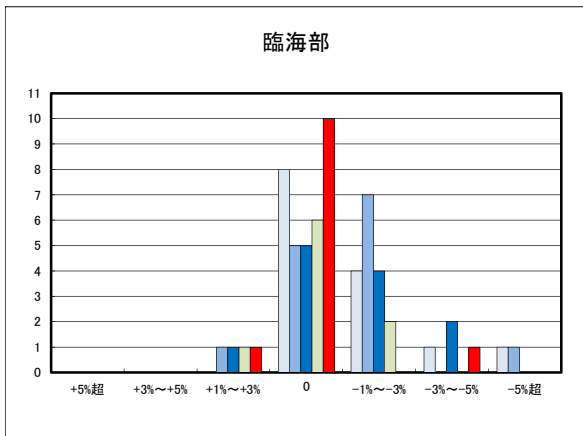
亀岡・菊間小学校区



○今治市商業地(地域別)の過去1年間の地価動向について



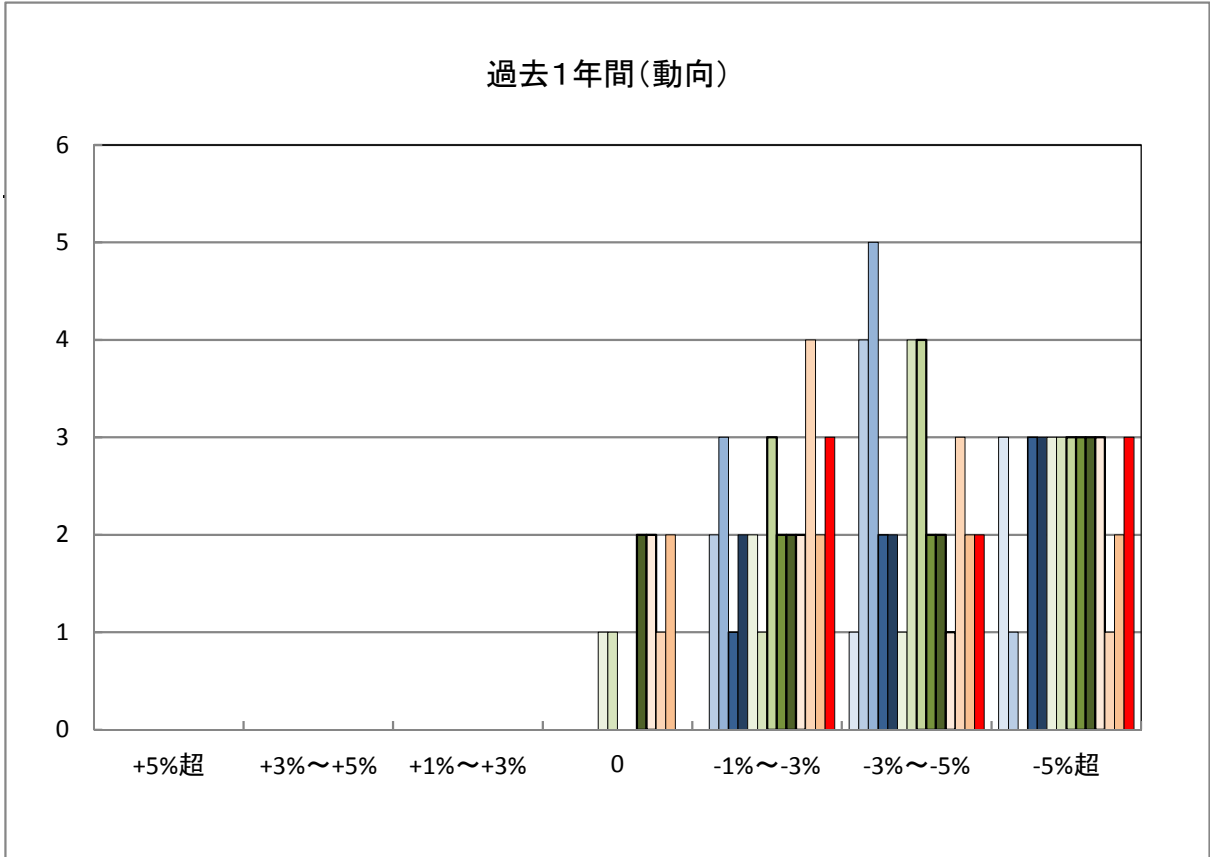
○今治市工業地(地域別)の過去1年間の地価動向について



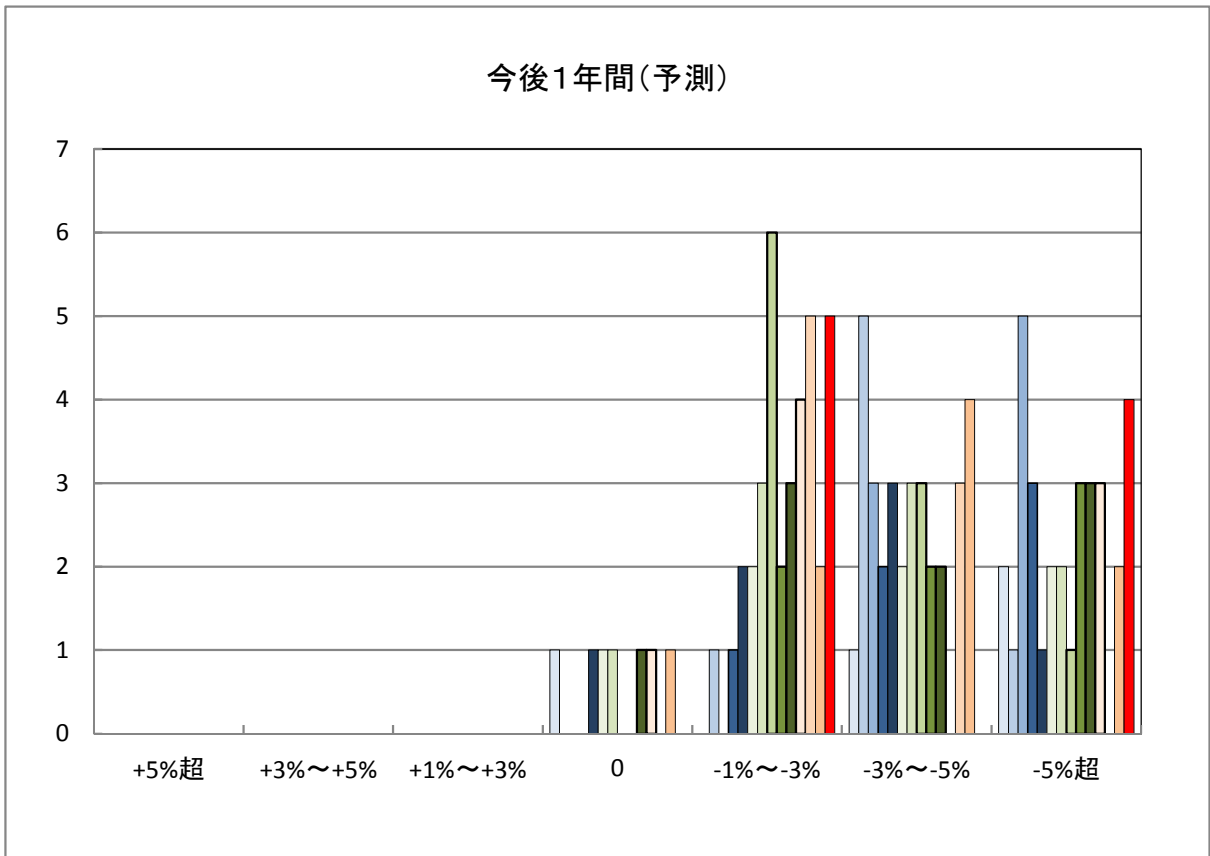
「地価動向等に関するアンケート調査」結果報告

H20	H25	H30
H21	H26	R1
H22	H27	R2
H23	H28	R3
H24	H29	

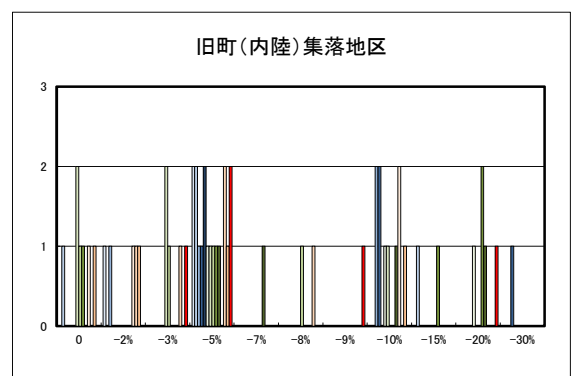
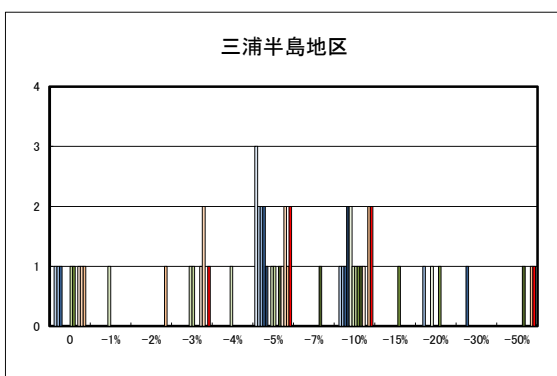
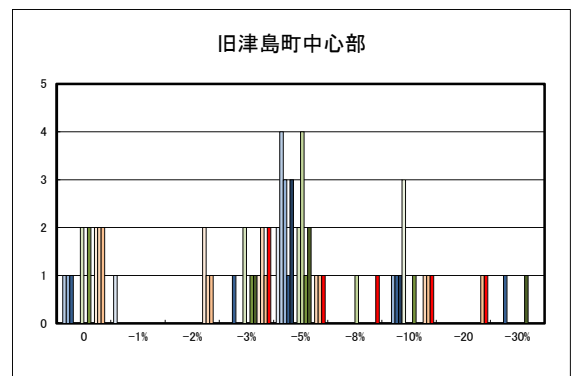
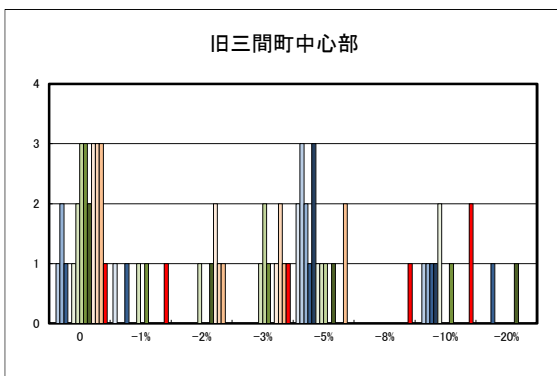
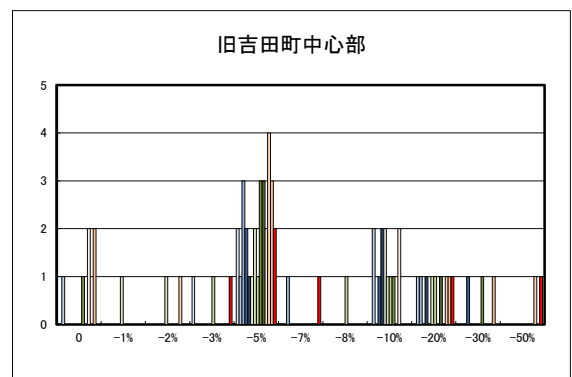
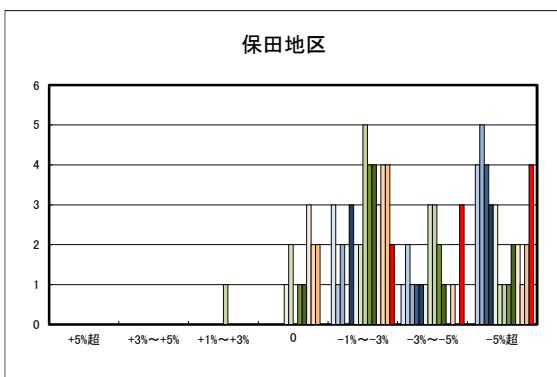
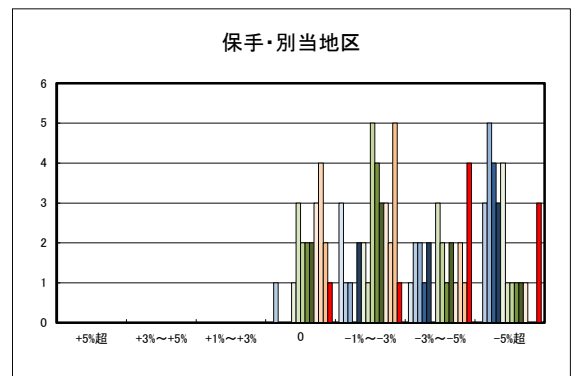
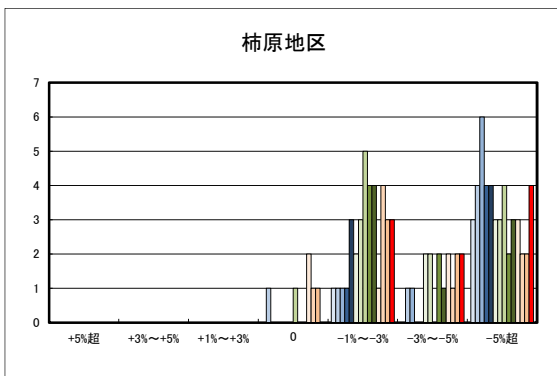
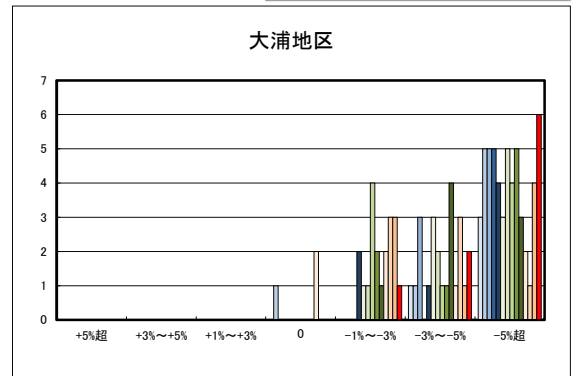
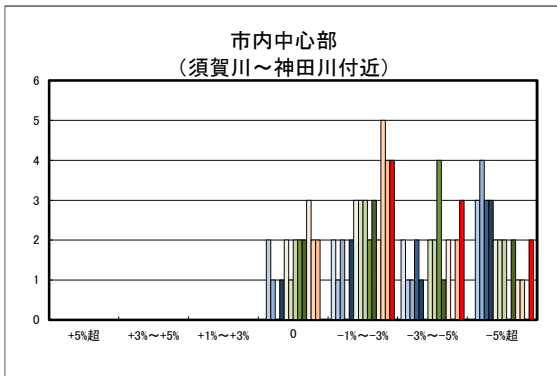
○宇和島市の過去1年間の地価動向の実感



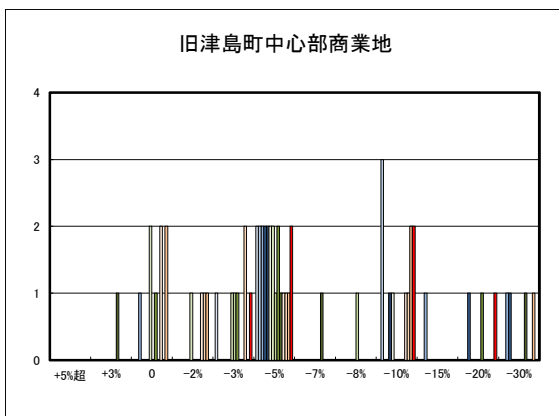
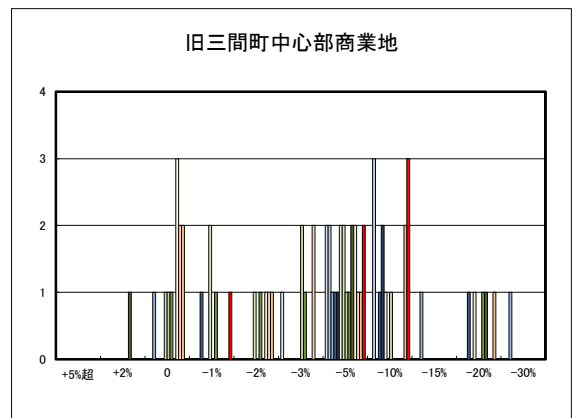
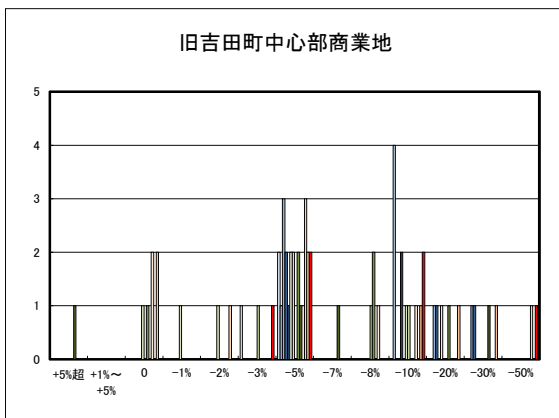
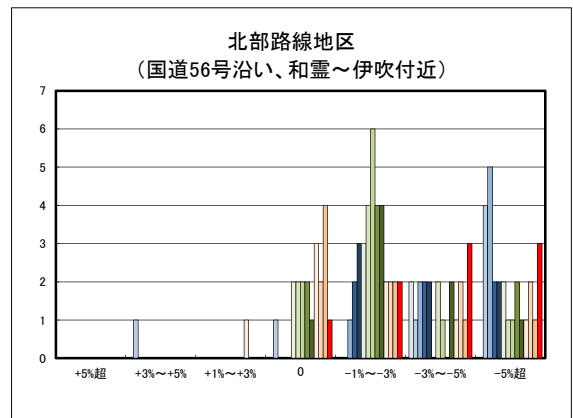
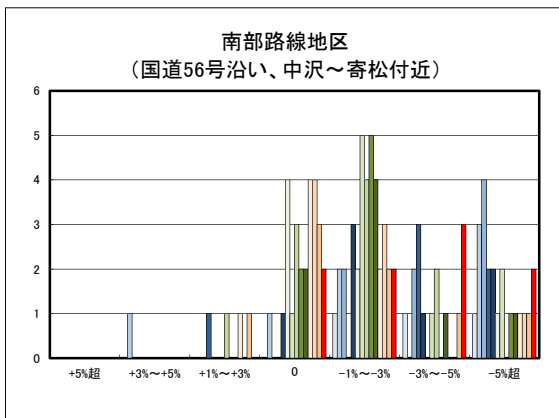
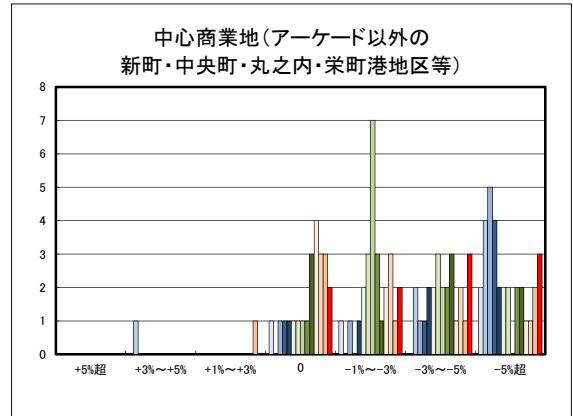
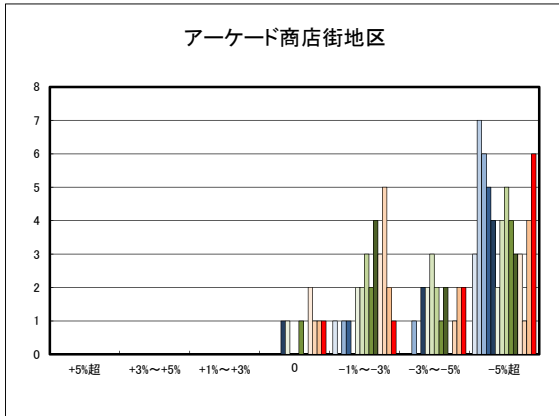
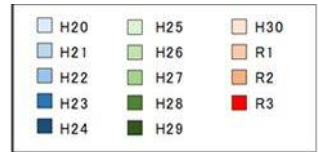
○宇和島市の今後1年間の地価動向の予測



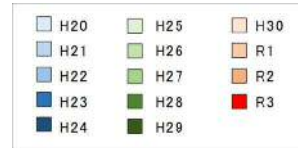
○宇和島市住宅地(地域別)の過去1年間の地価動向について



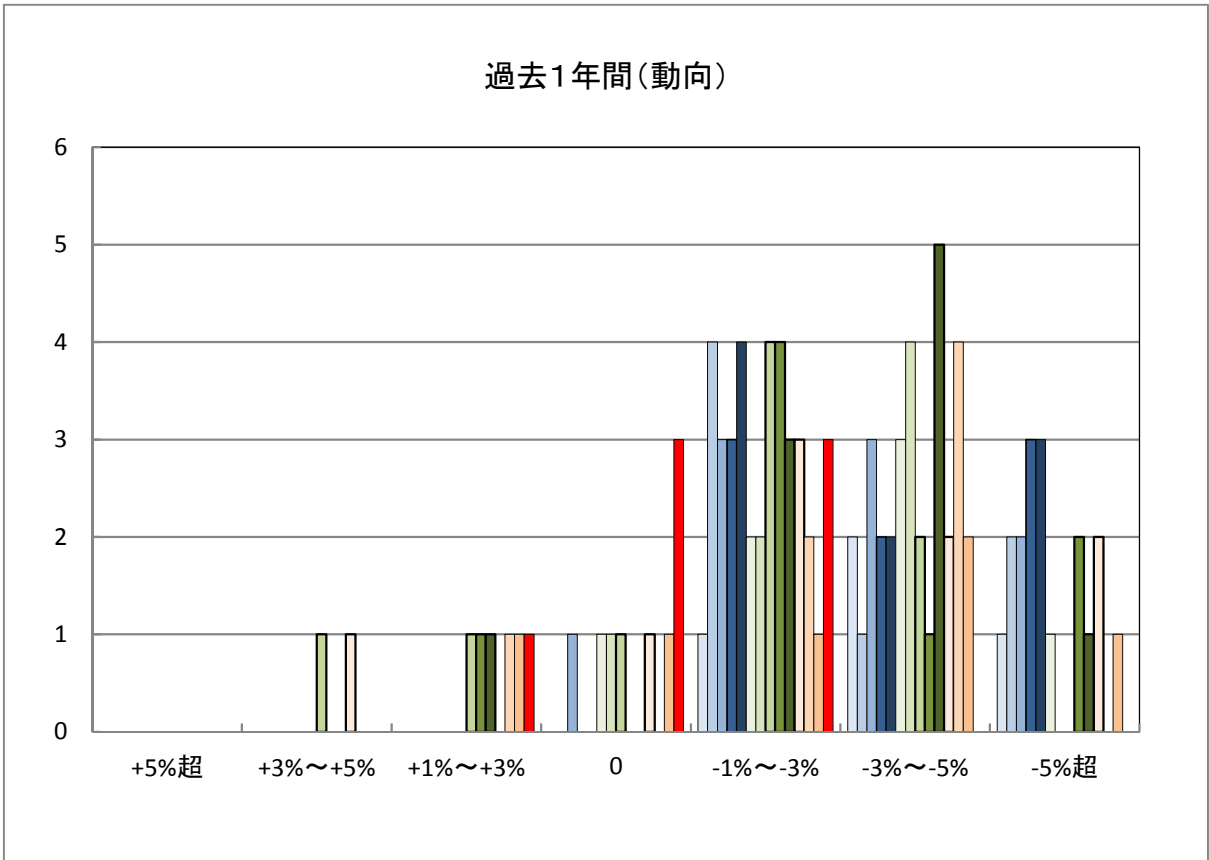
○宇和島市商業地(地域別)の過去1年間の地価動向について



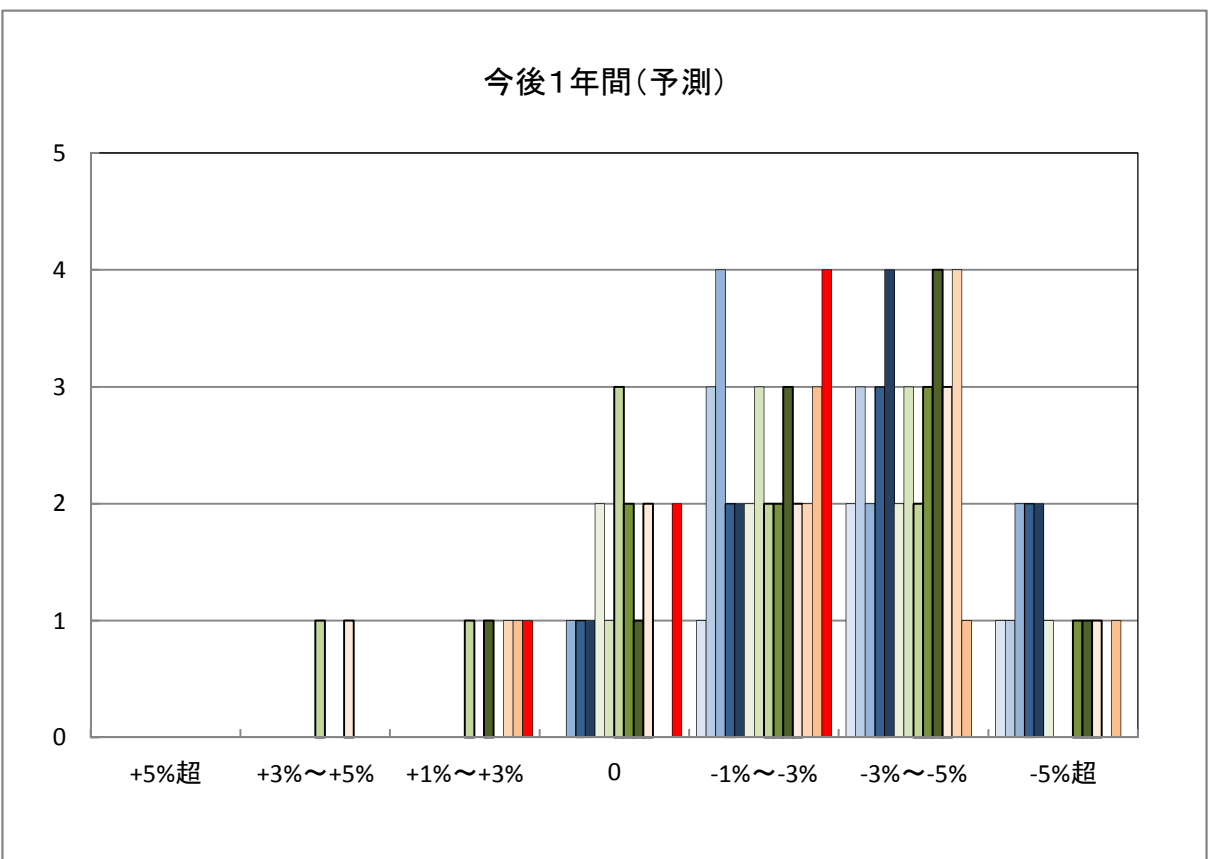
「地価動向等に関するアンケート調査」結果報告



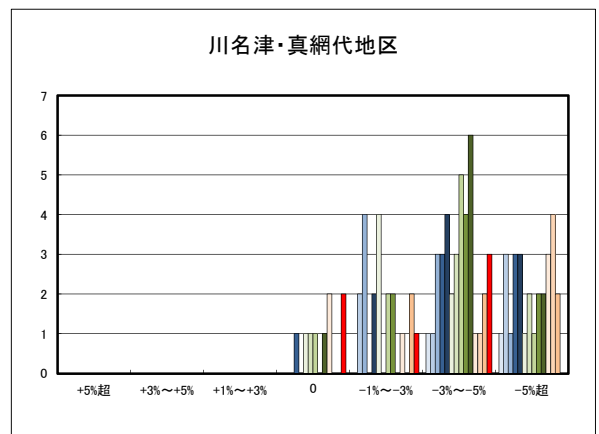
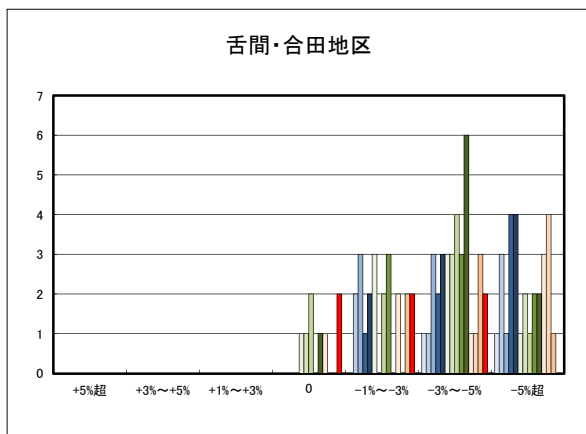
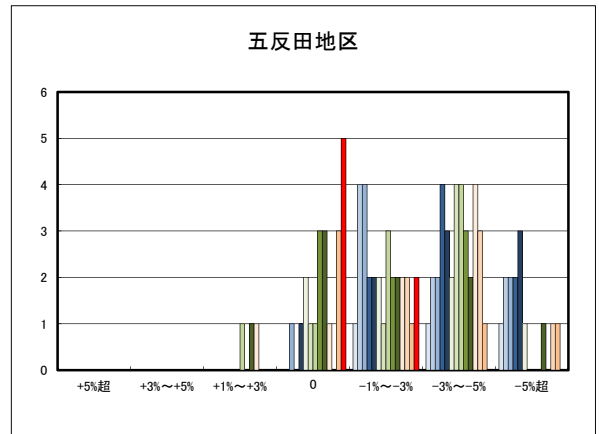
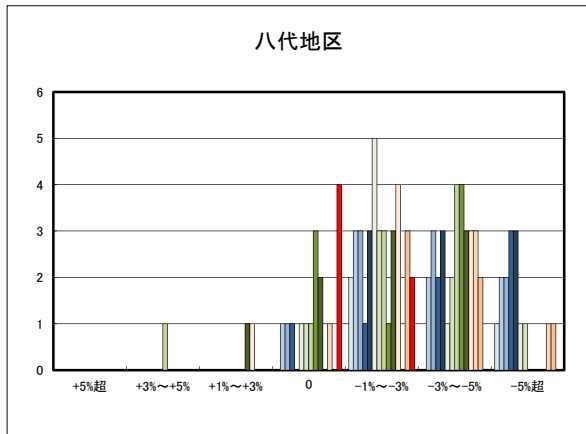
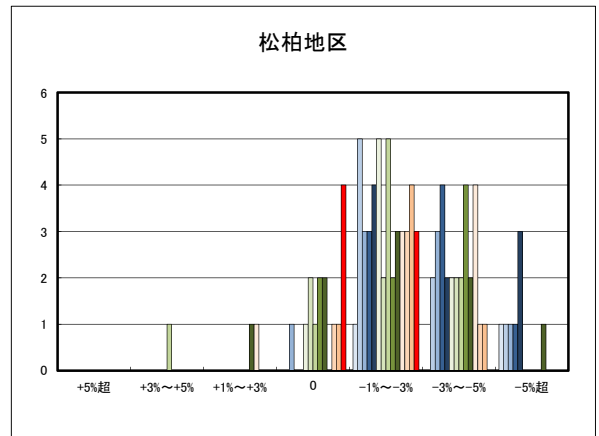
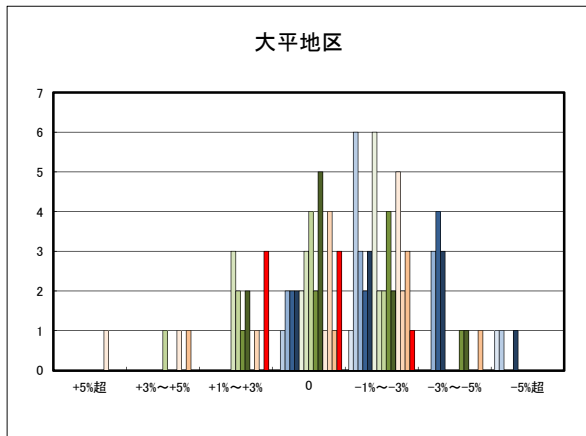
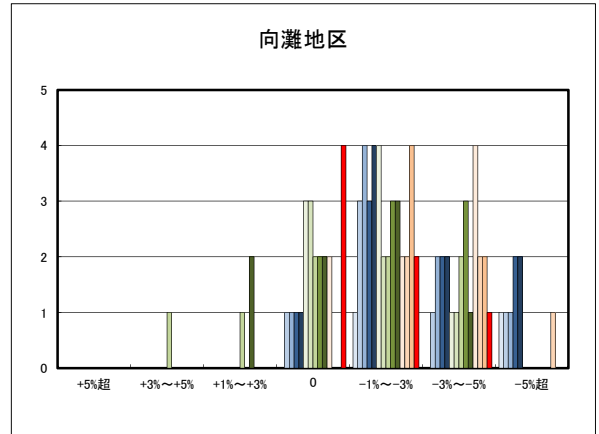
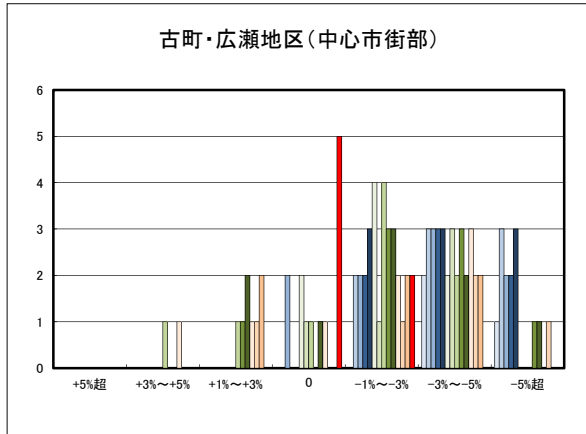
○八幡浜市の過去1年間の地価動向の実感



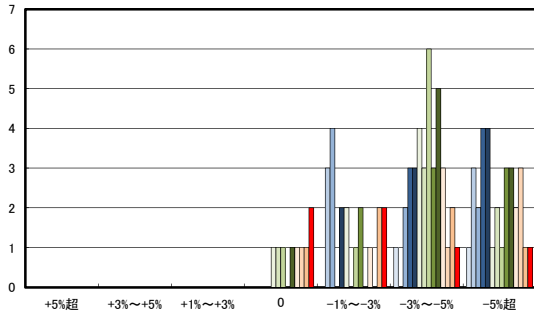
○八幡浜市の今後1年間の地価動向の予測



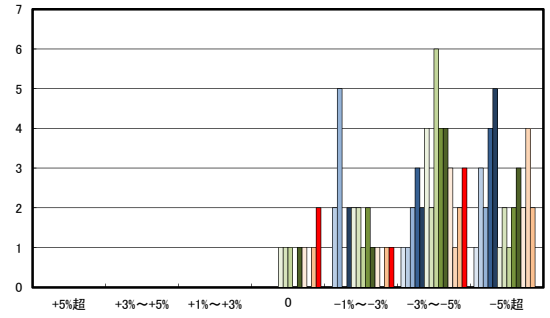
○八幡浜市住宅地(地域別)の過去1年間の地価動向について



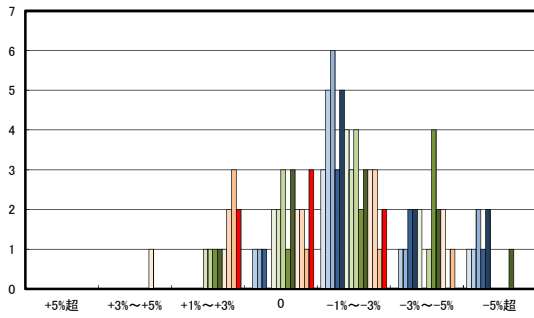
日土地区



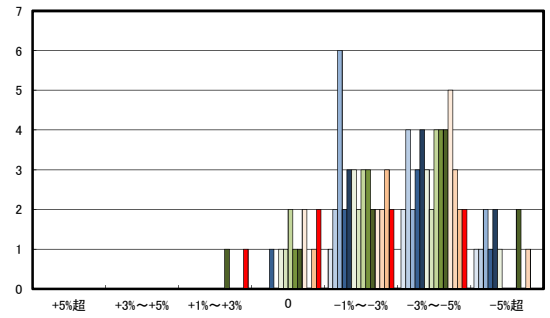
若山・布喜川地区



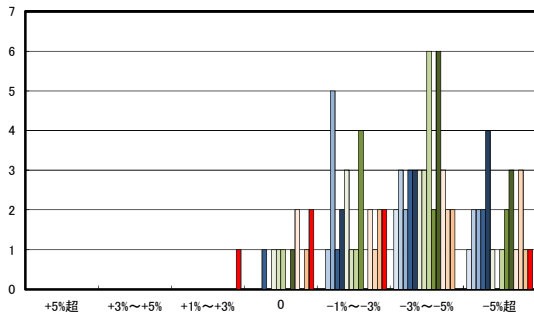
保内町(喜木・宮内)中心部



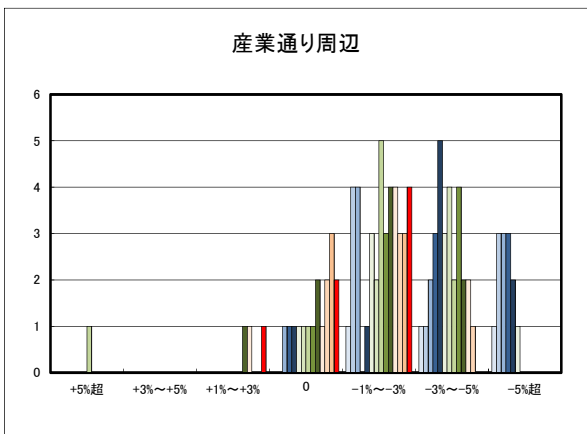
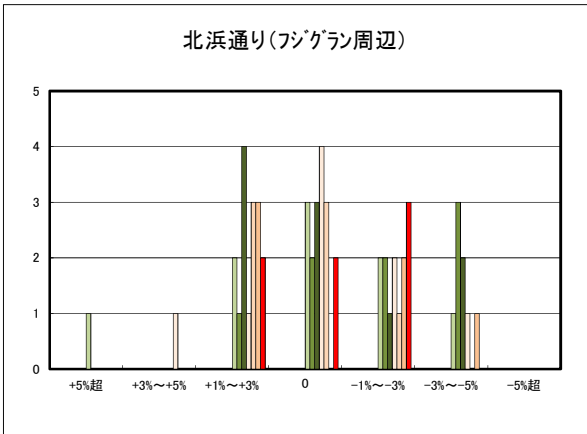
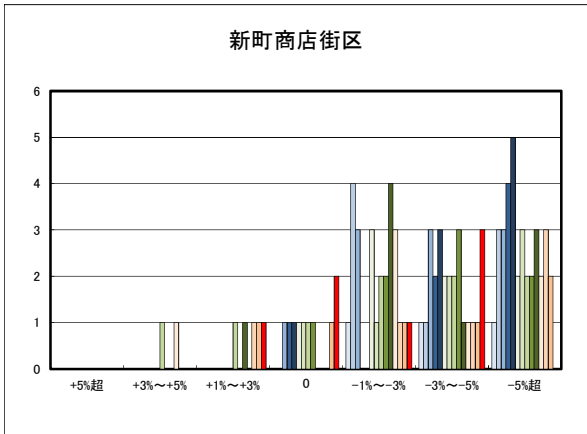
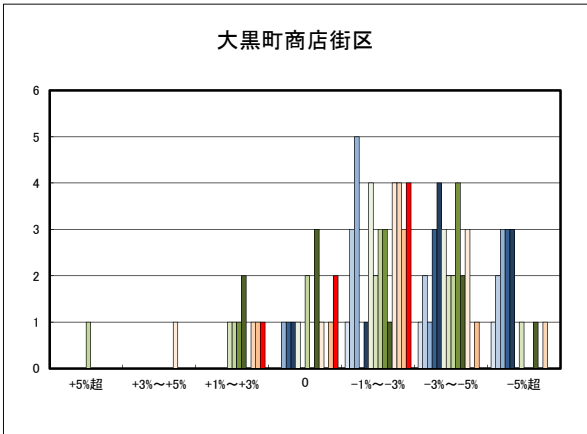
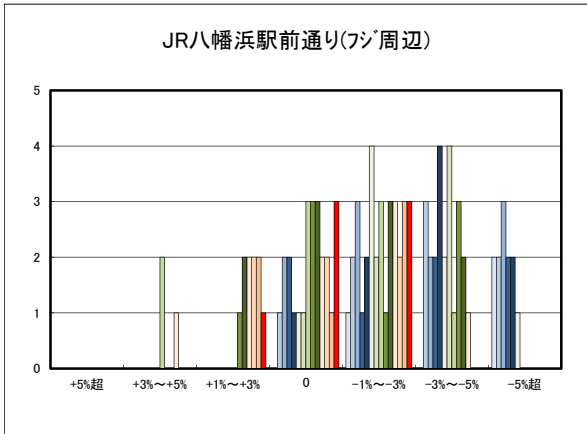
保内町川之石地区



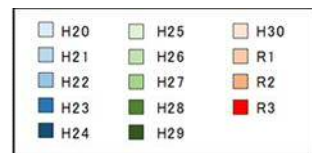
保内町集落部



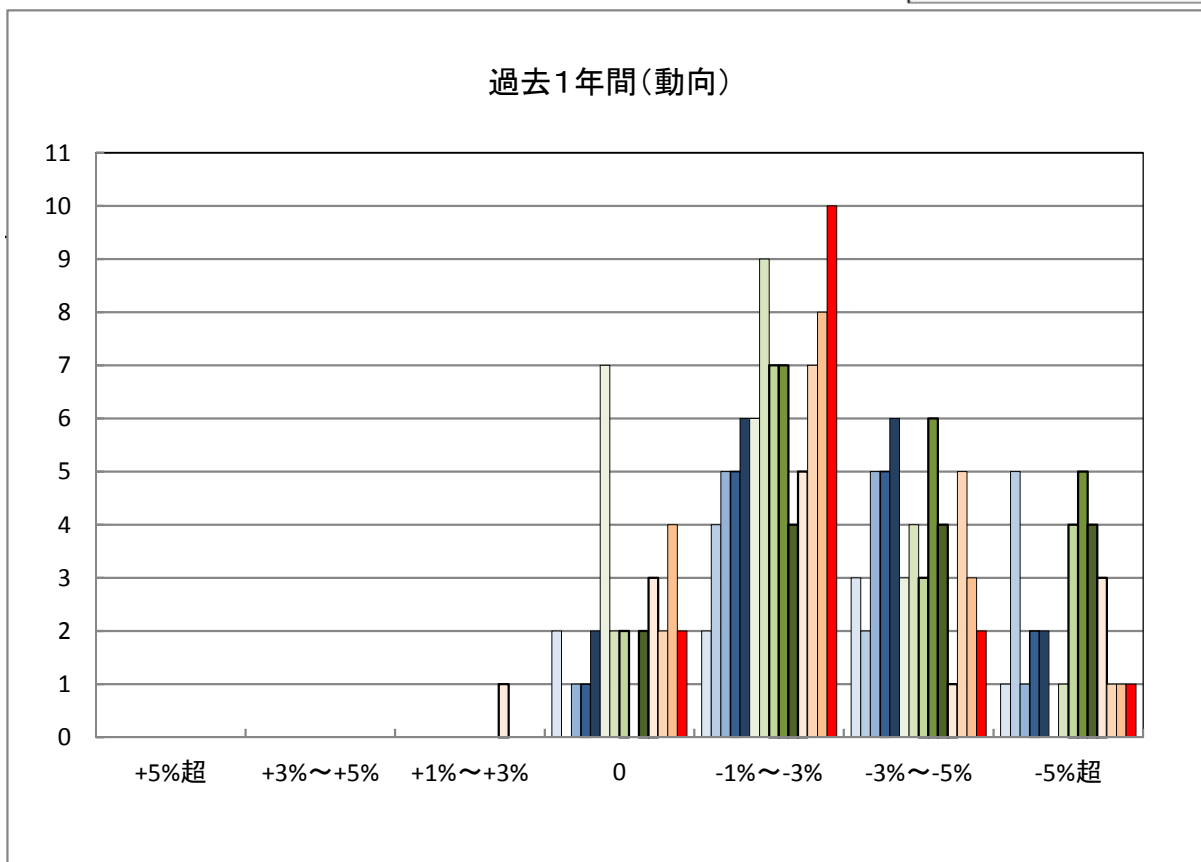
○八幡浜市商業地(地域別)の過去1年間の地価動向について



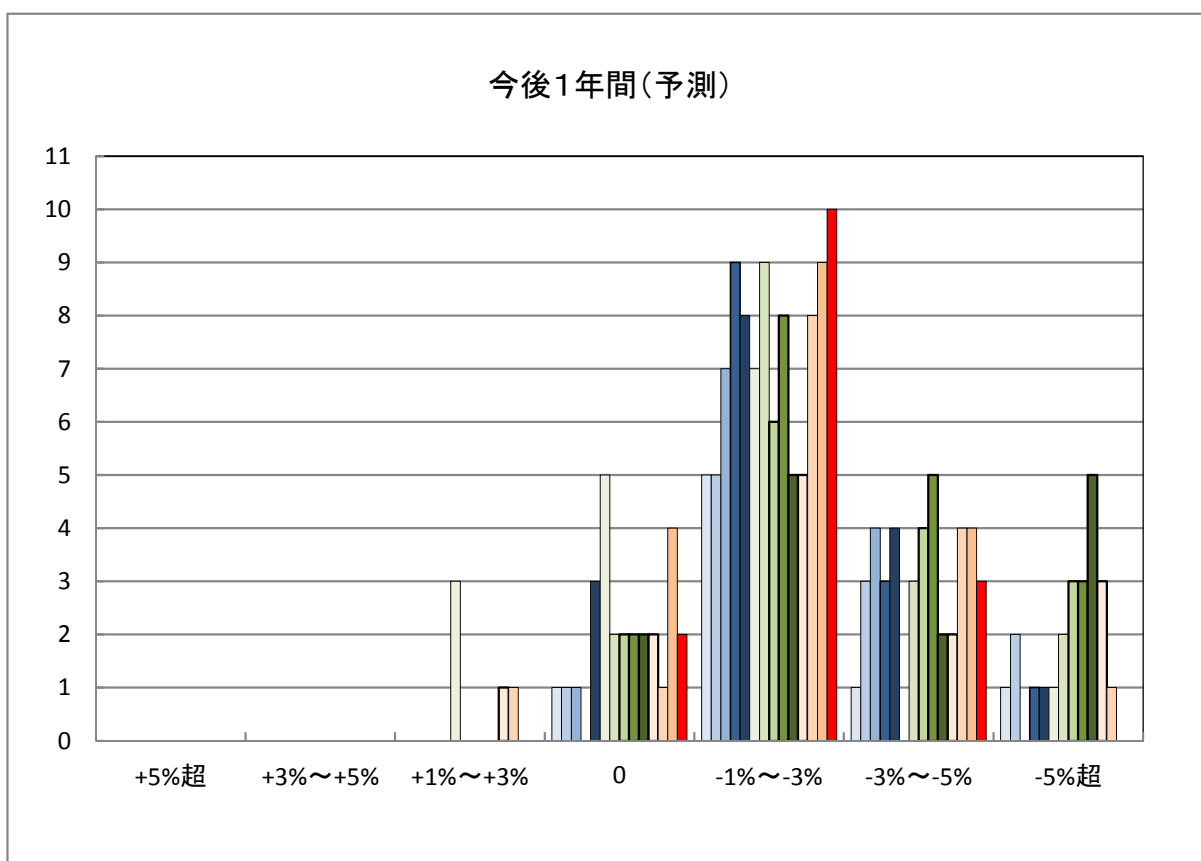
「地価動向等に関するアンケート調査」結果報告



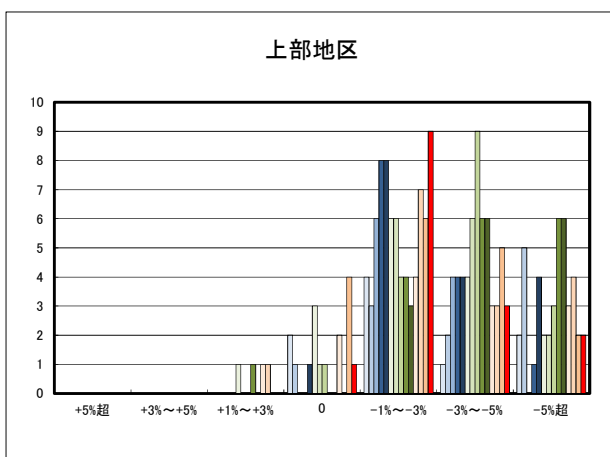
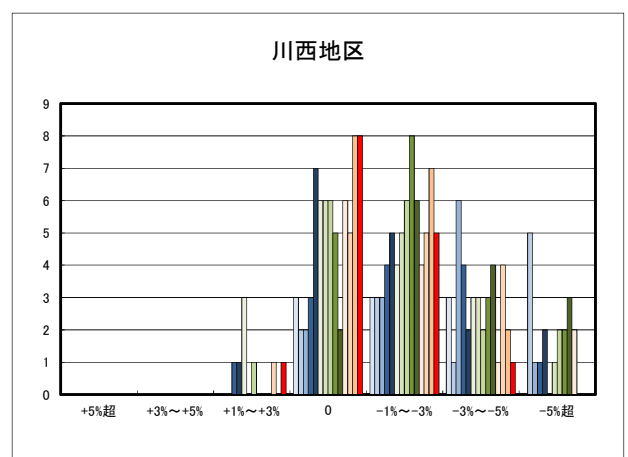
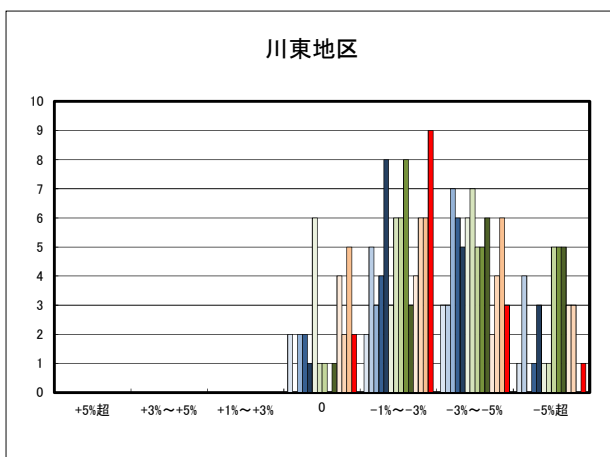
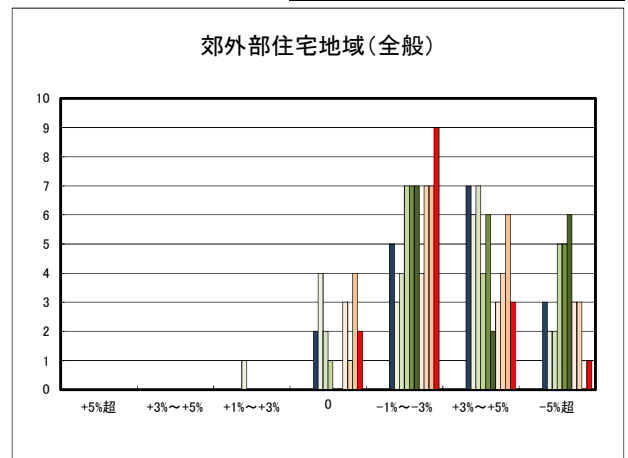
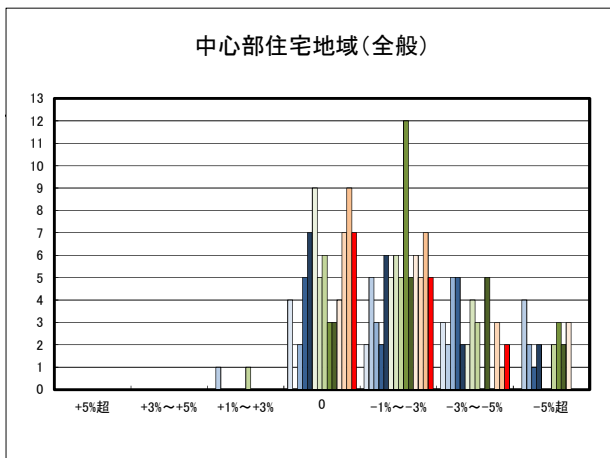
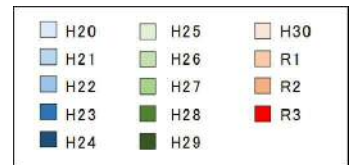
○新居浜市の過去1年間の地価動向の実感



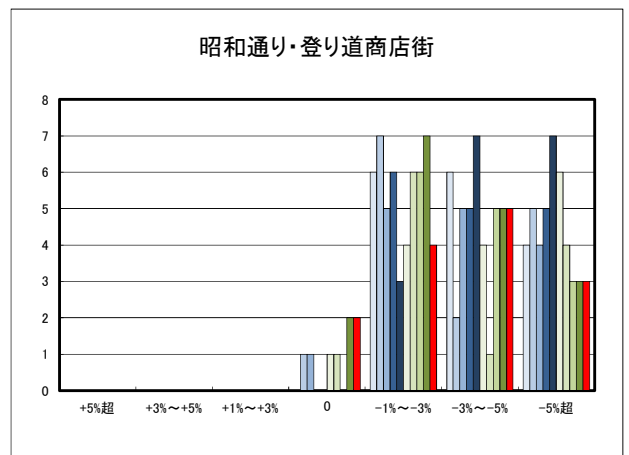
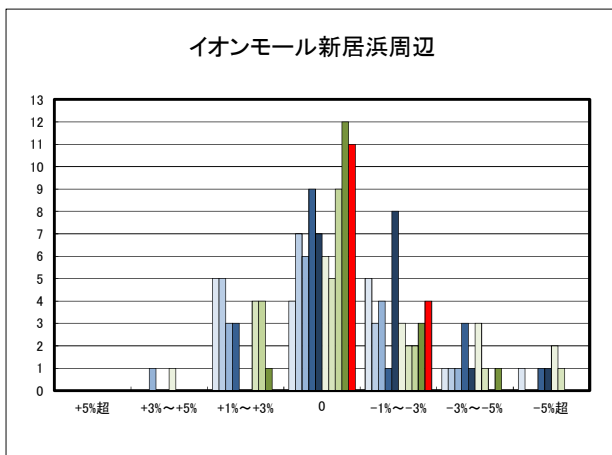
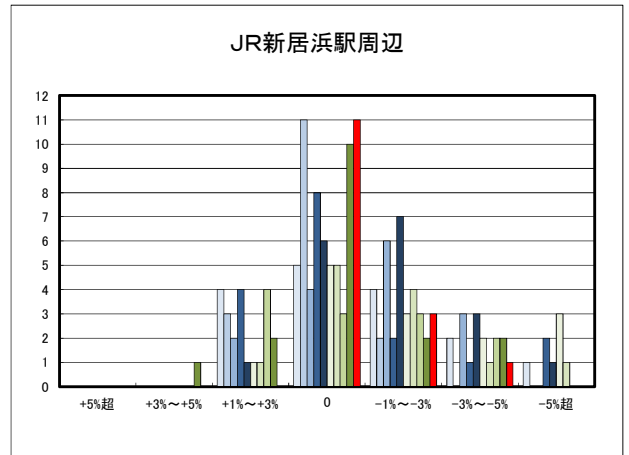
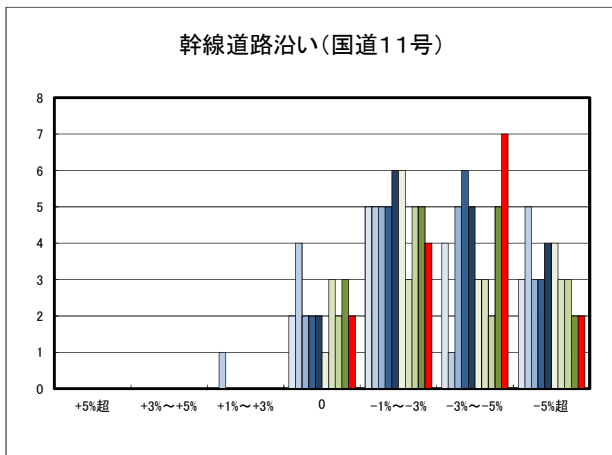
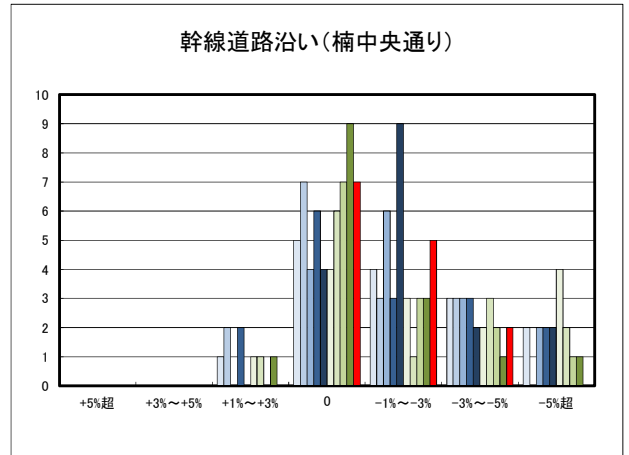
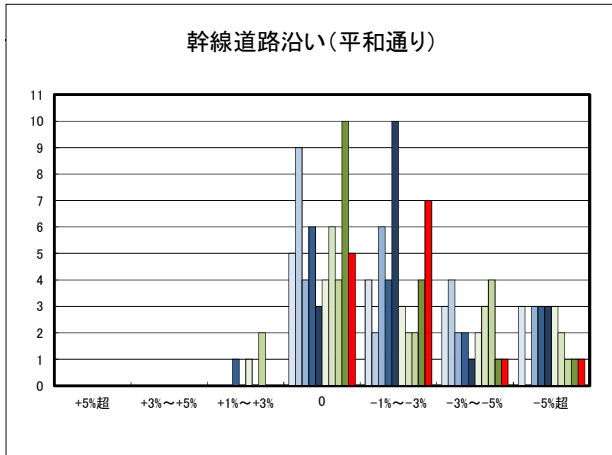
○新居浜市の今後1年間の地価動向の予測



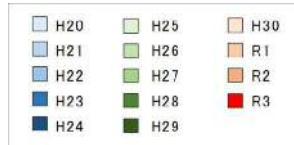
○新居浜市住宅地(地域別)の過去1年間の地価動向について



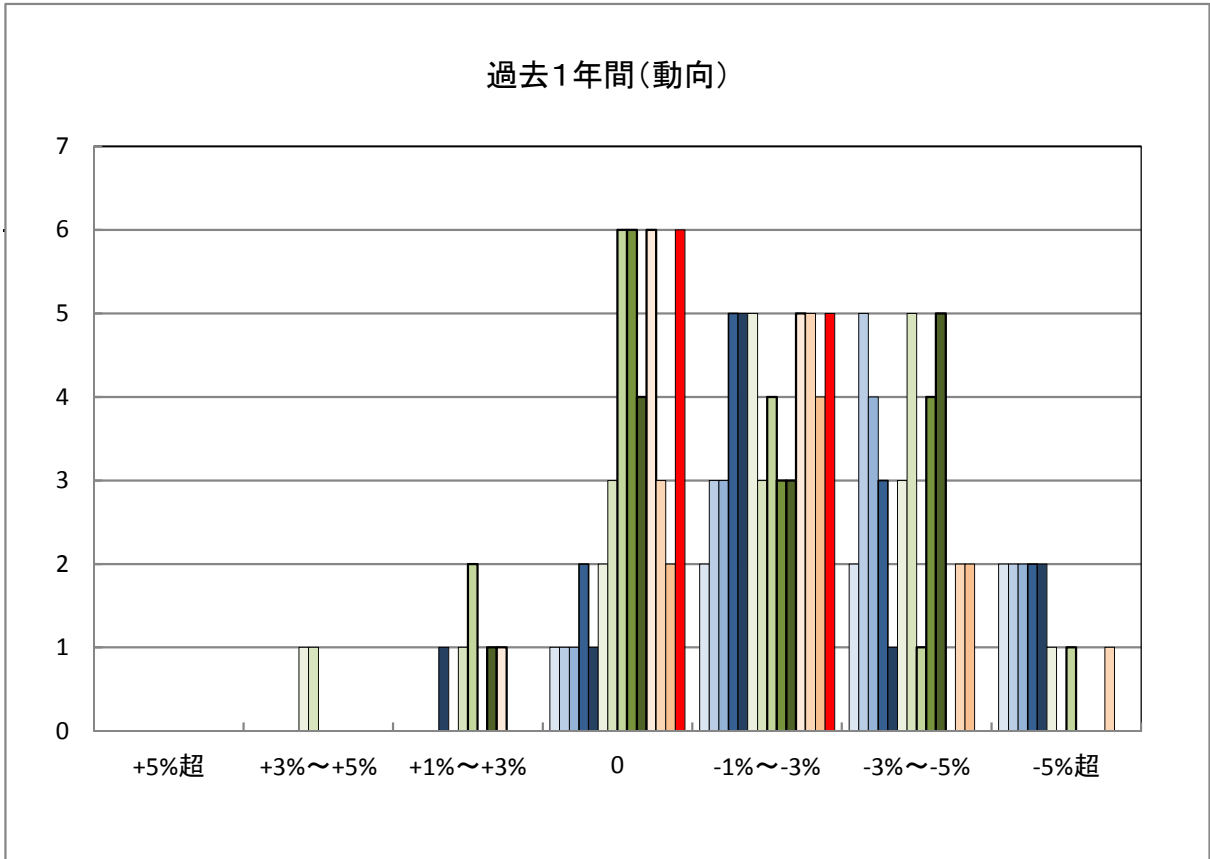
○新居浜市商業地(地域別)の過去1年間の地価動向について



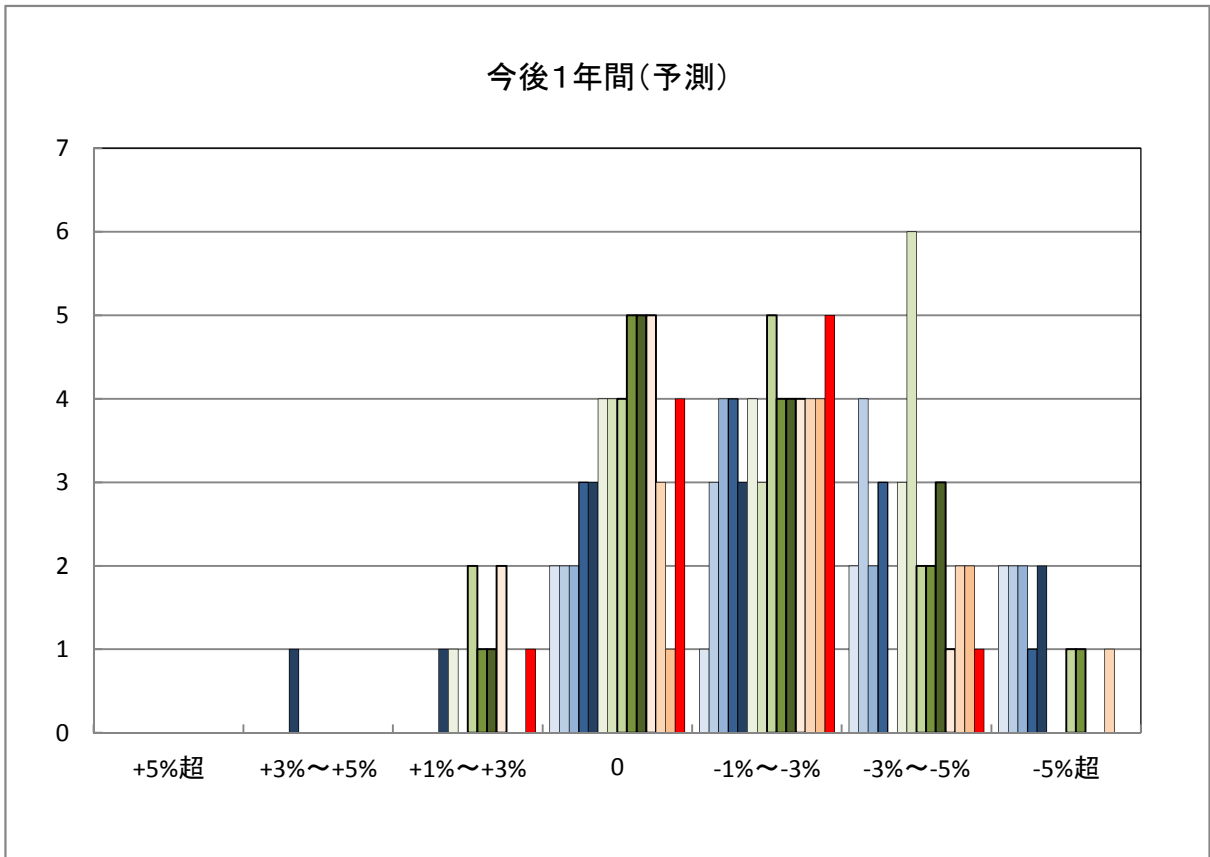
「地価動向等に関するアンケート調査」結果報告



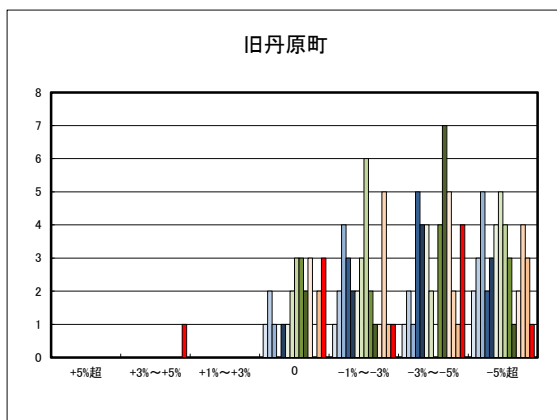
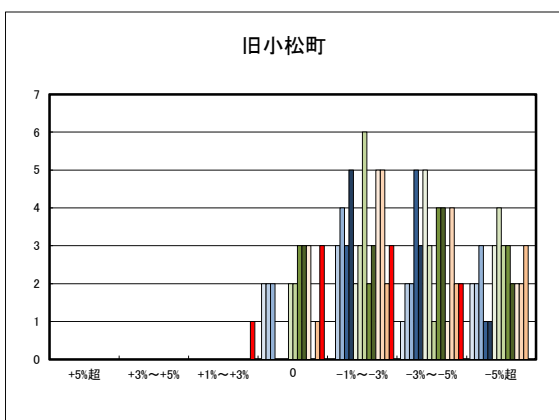
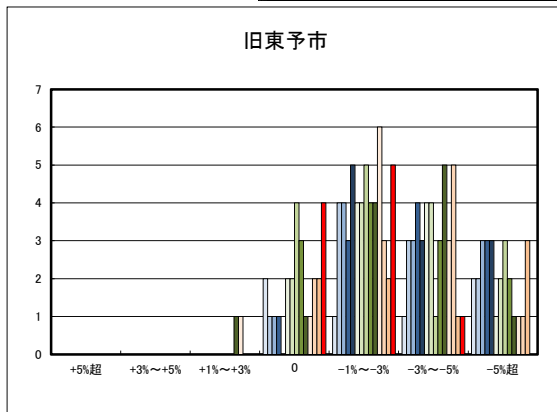
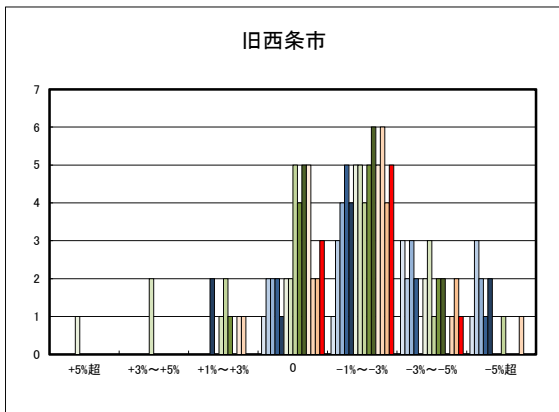
○西条市の過去1年間の地価動向の実感



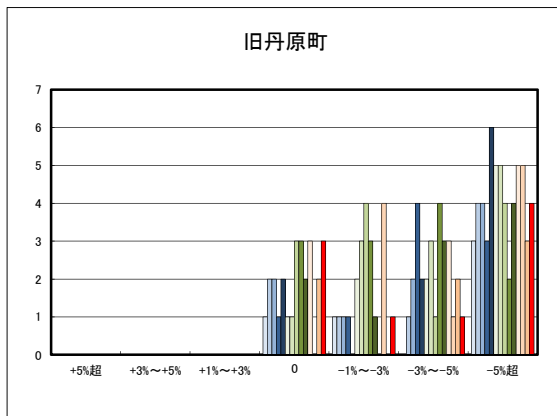
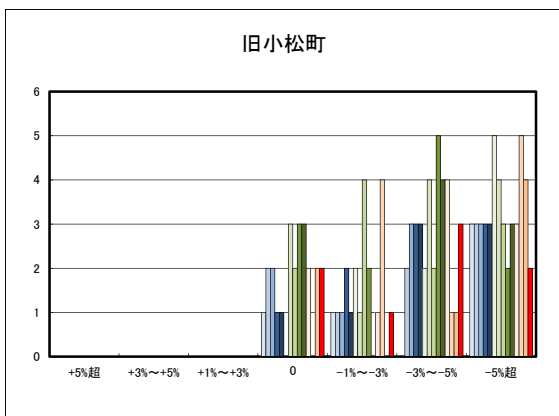
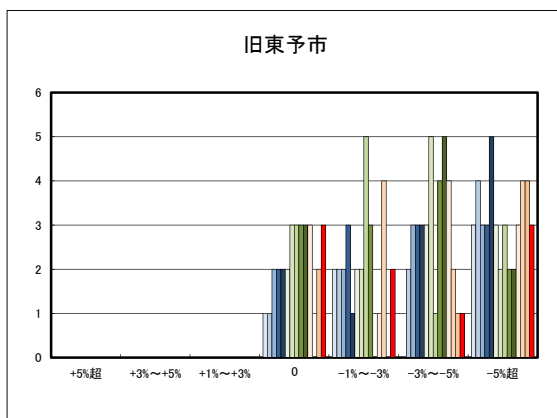
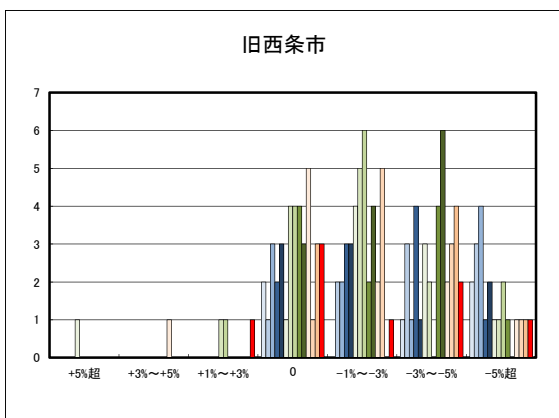
○西条市の今後1年間の地価動向の予測



○西条市住宅地(地域別)の過去1年間の地価動向について



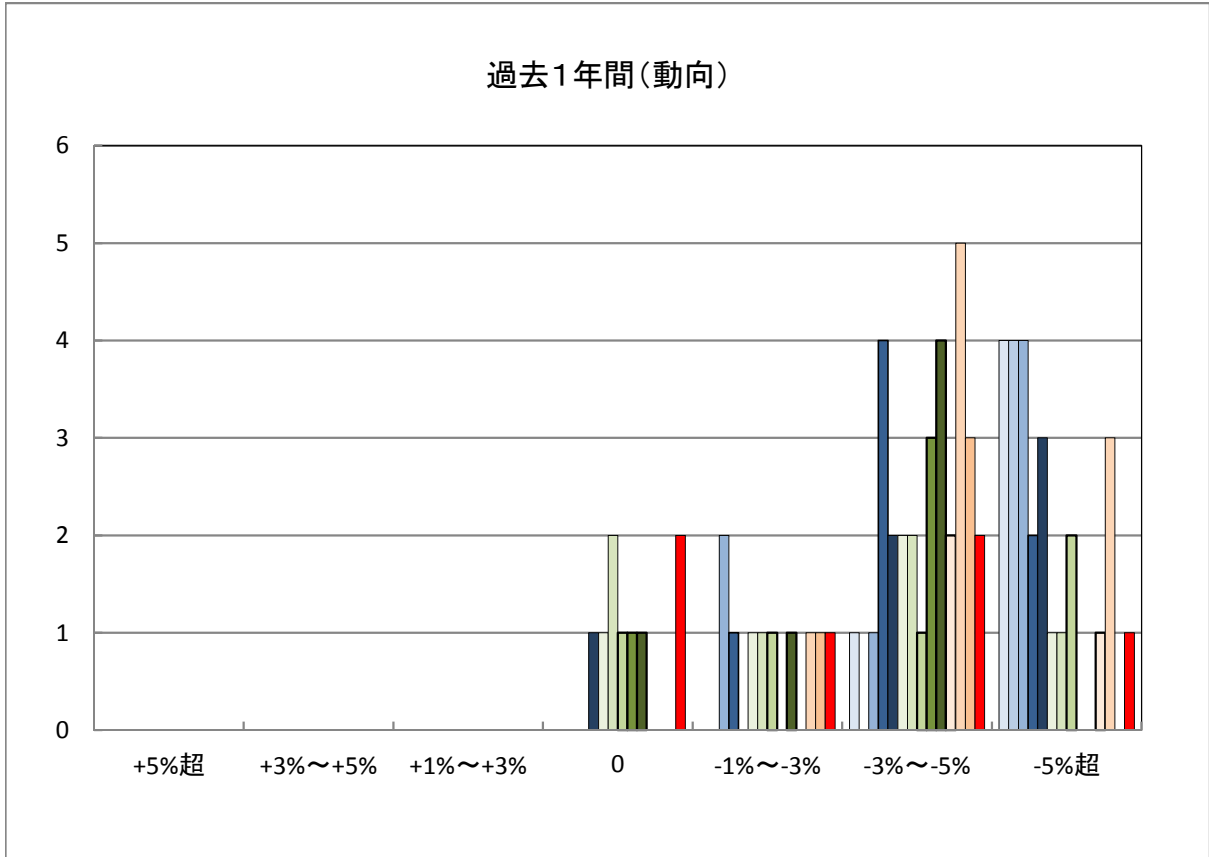
○西条市商業地(地域別)の過去1年間の地価動向について



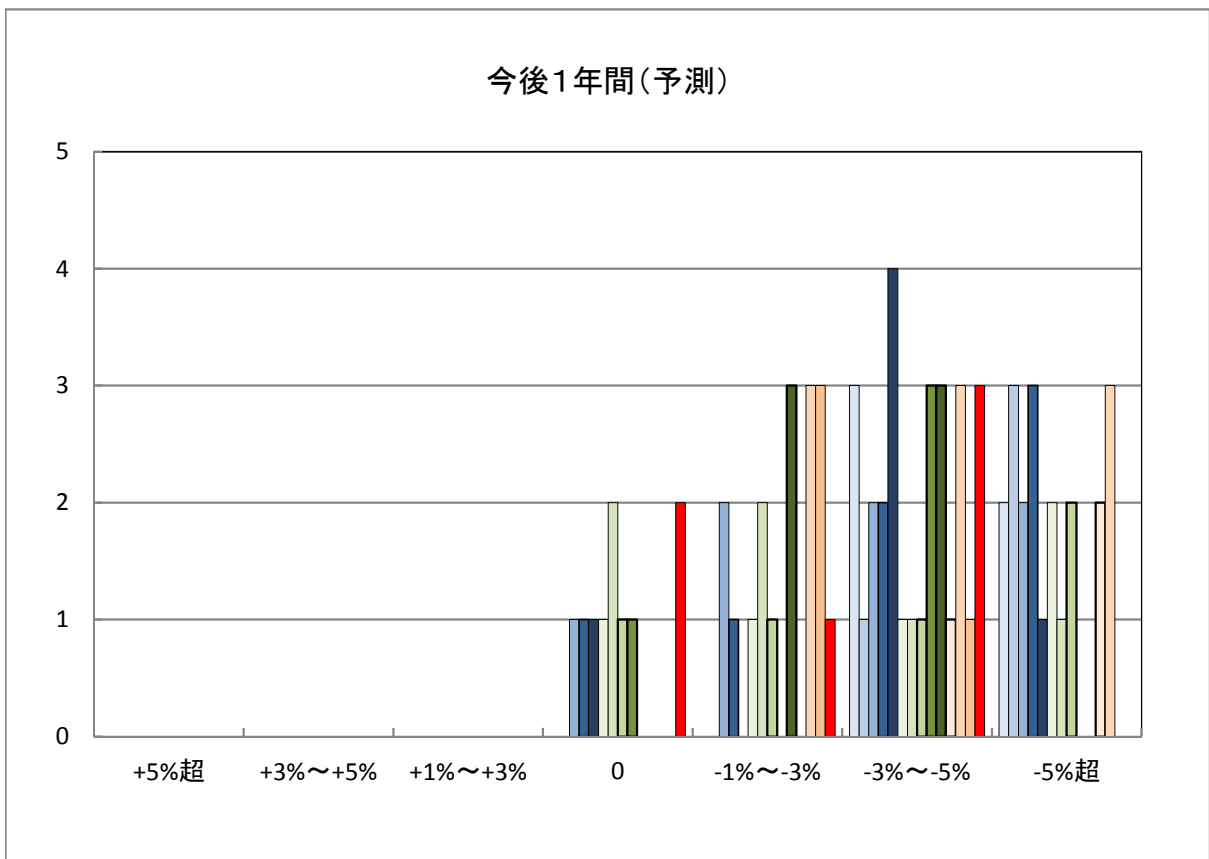
「地価動向等に関するアンケート調査」結果報告

H20	H25	H30
H21	H26	R1
H22	H27	R2
H23	H28	R3
H24	H29	

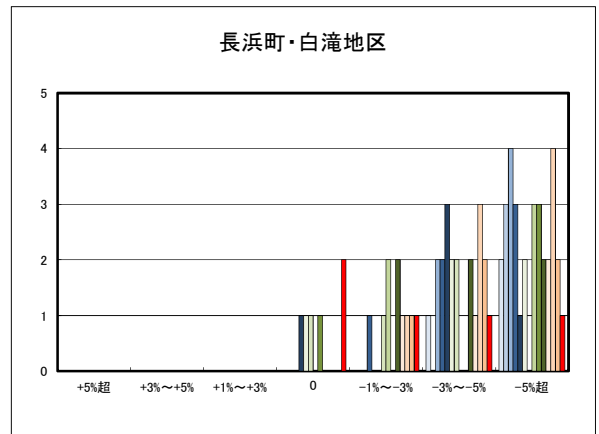
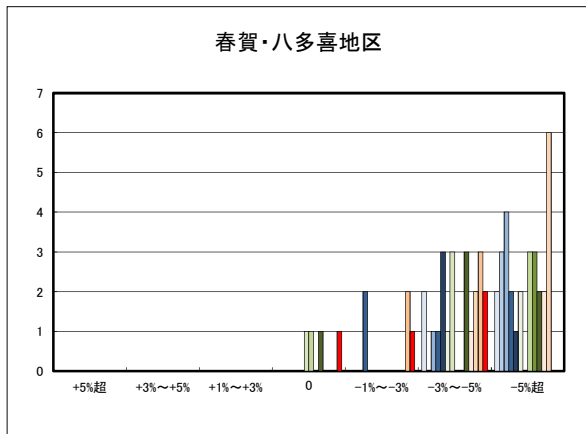
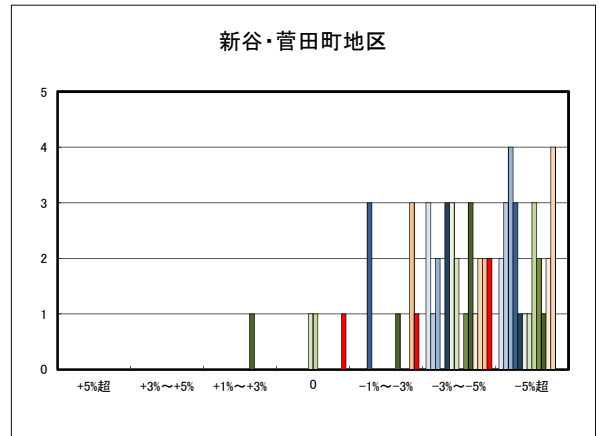
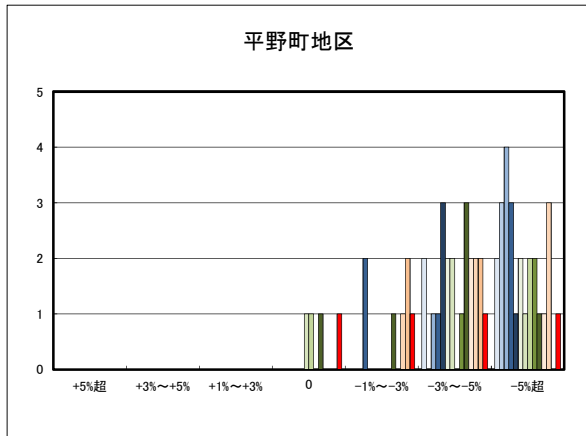
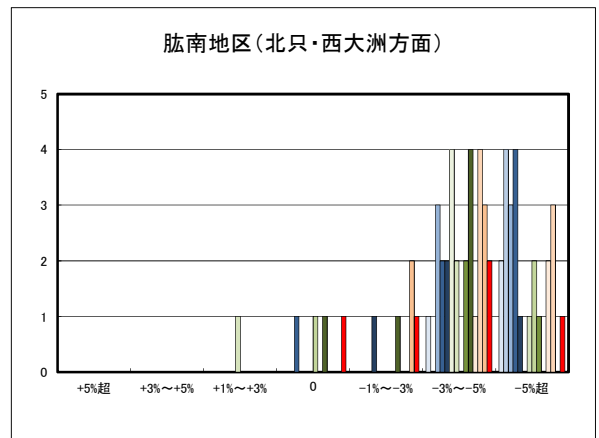
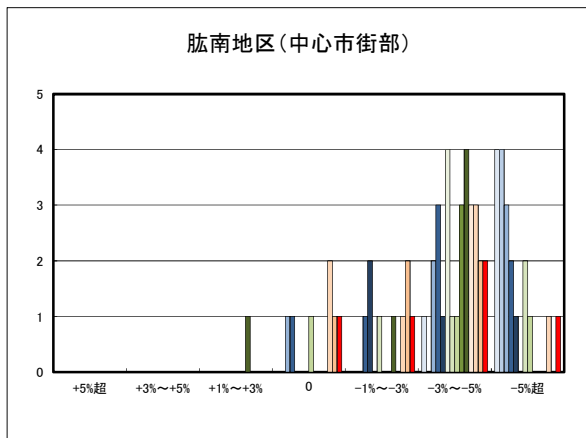
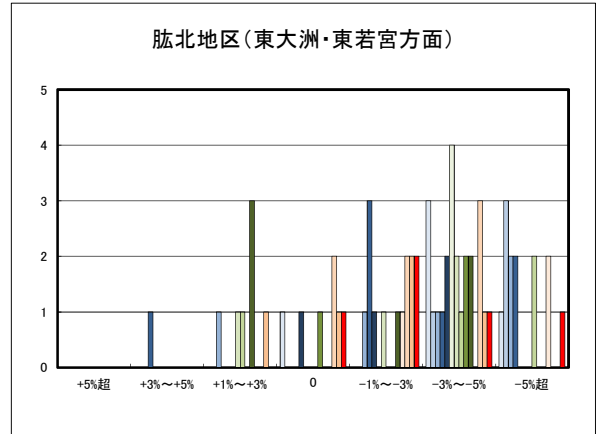
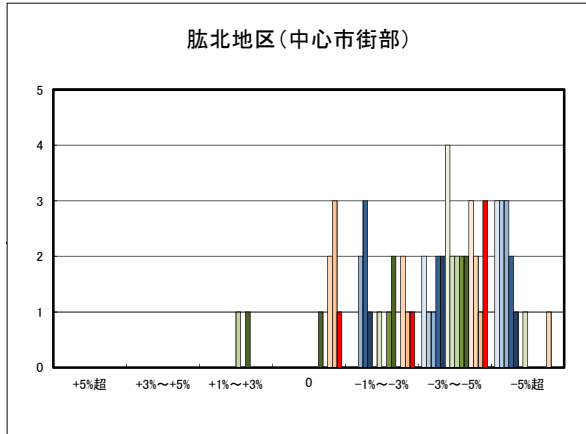
○大洲市の過去1年間の地価動向の実感

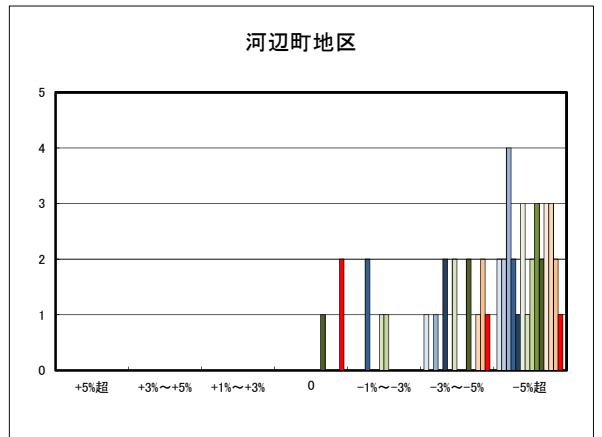
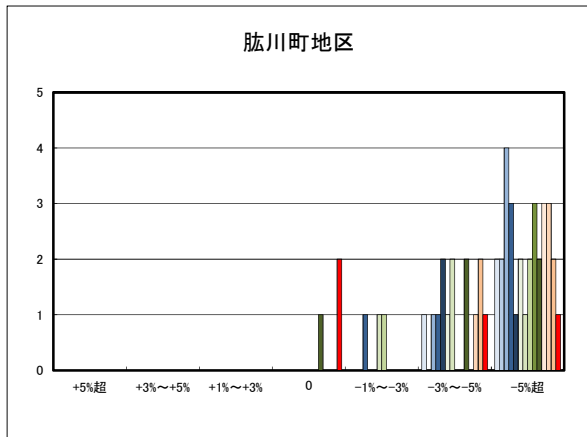


○大洲市の今後1年間の地価動向の予測

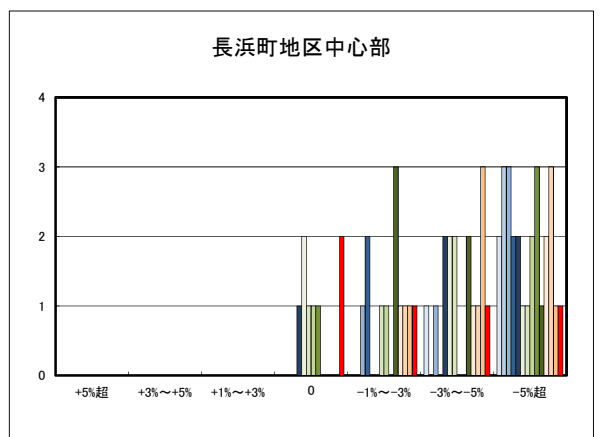
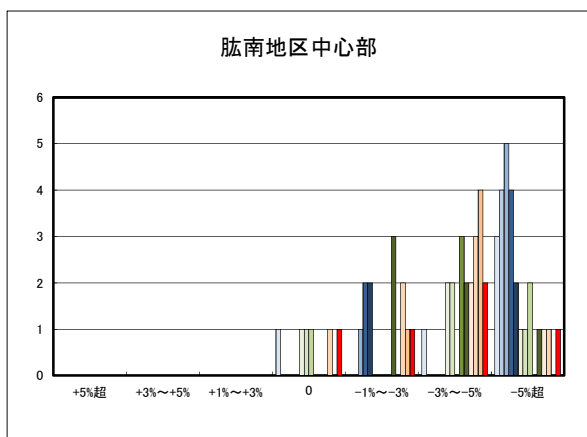
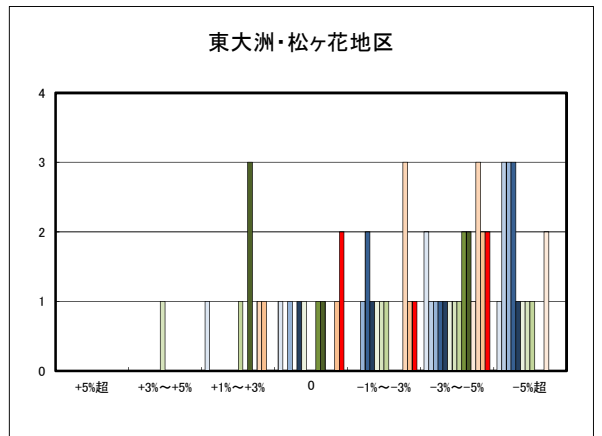
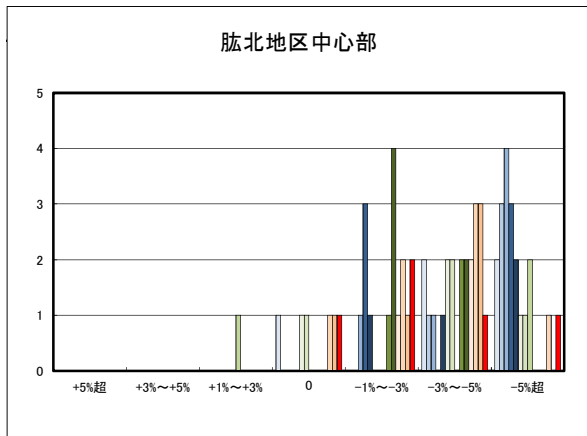


○大洲市住宅地(地域別)の過去1年間の地価動向について





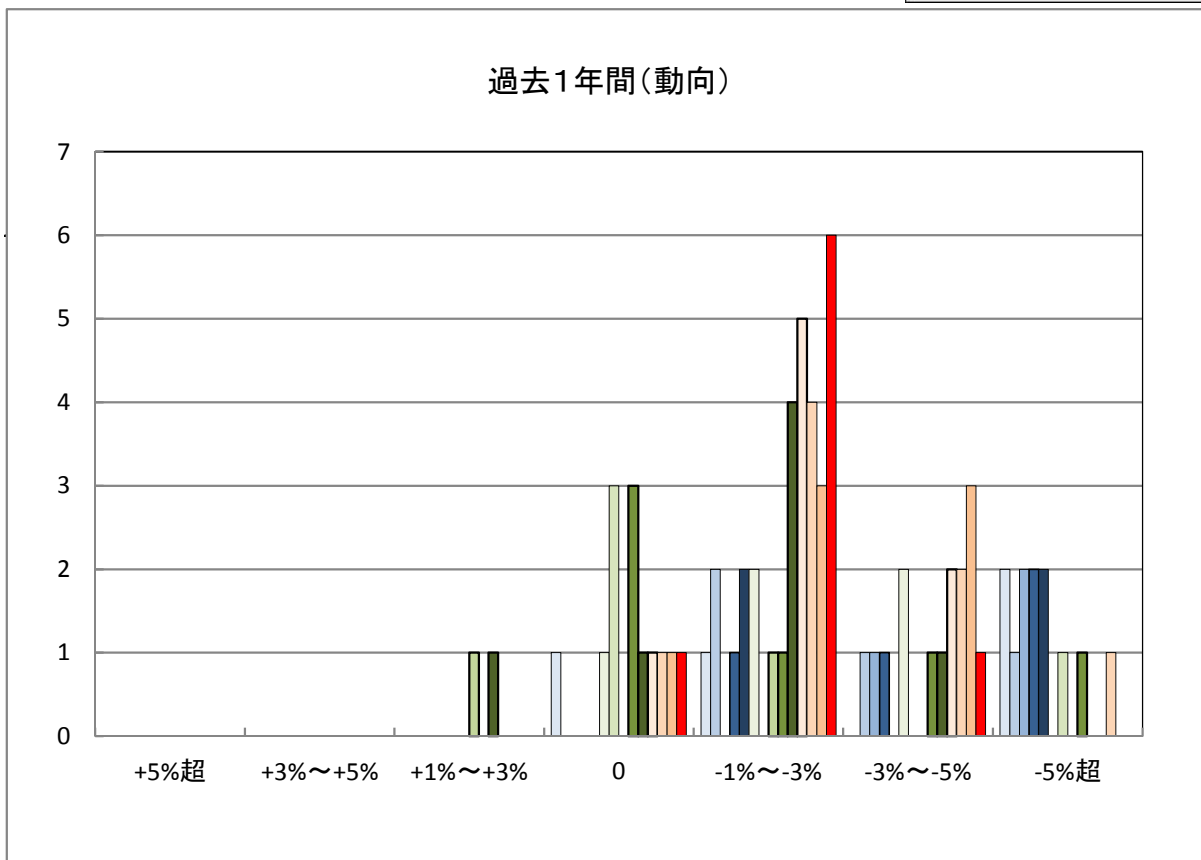
○大洲市商業地(地域別)の過去1年間の地価動向について



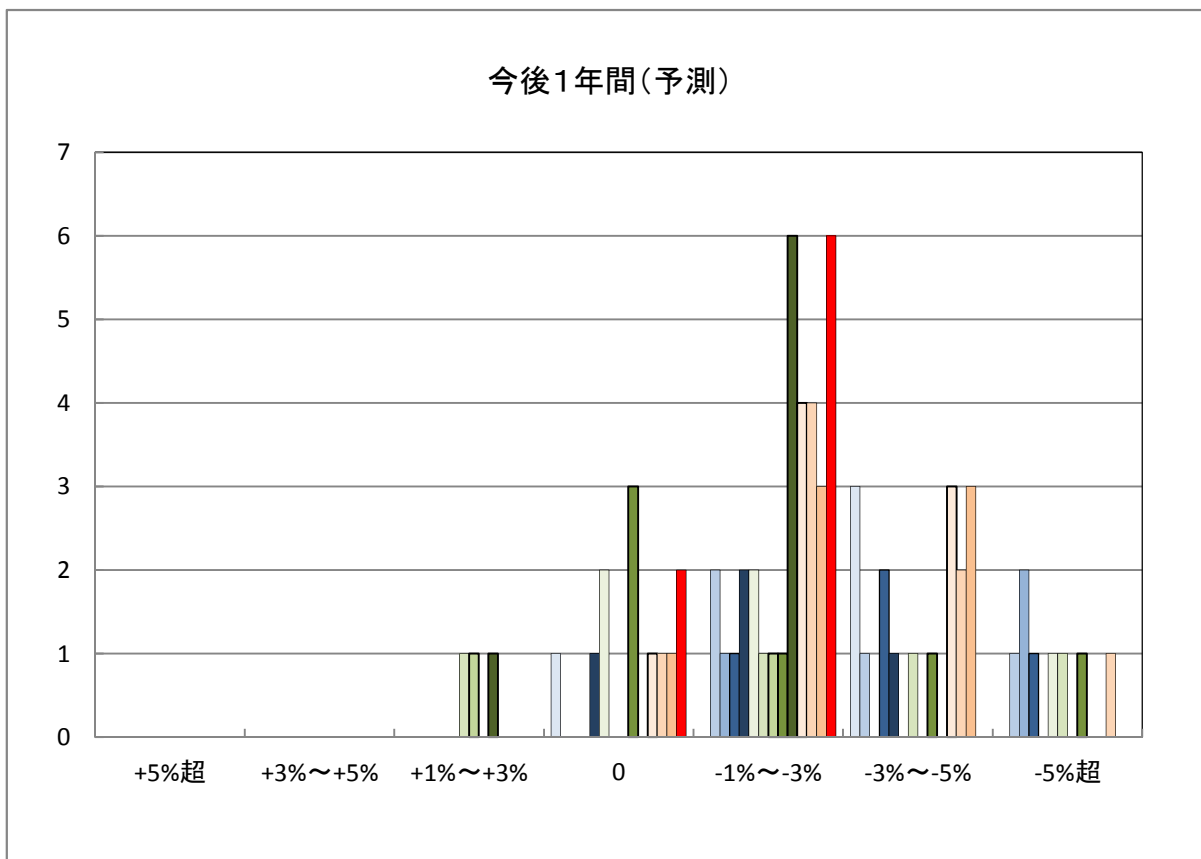
「地価動向等に関するアンケート調査」結果報告

H20	H25	H30
H21	H26	R1
H22	H27	R2
H23	H28	R3
H24	H29	

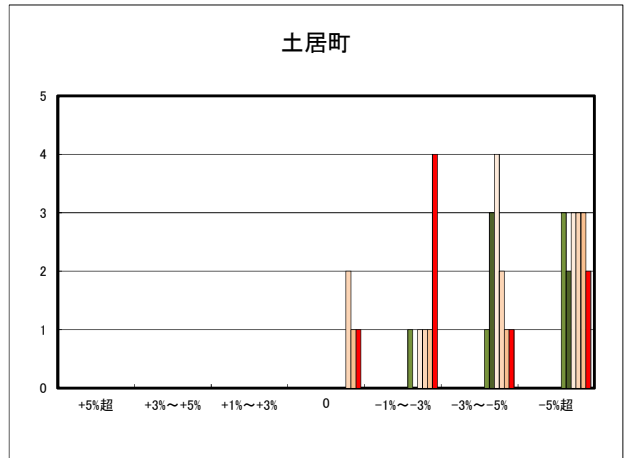
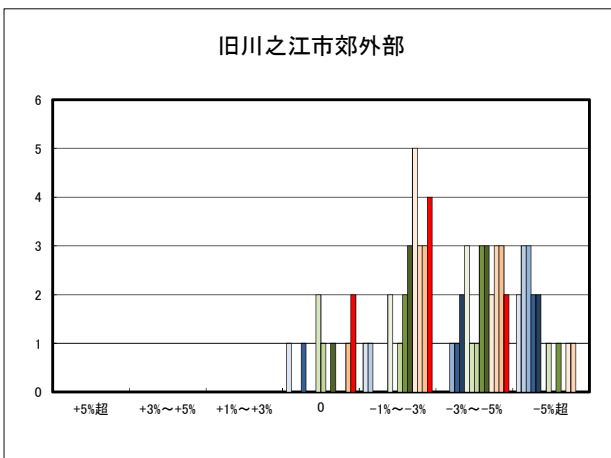
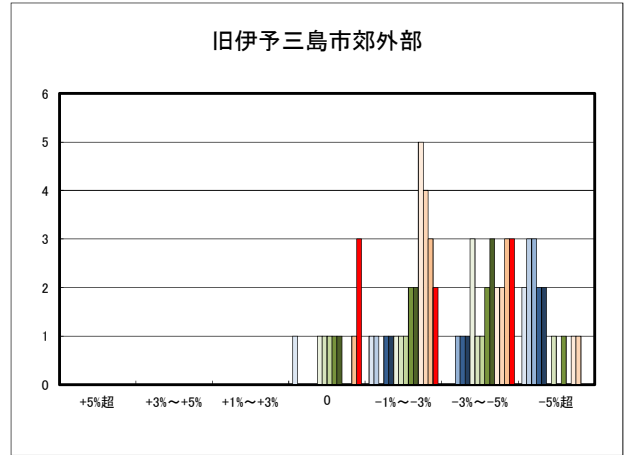
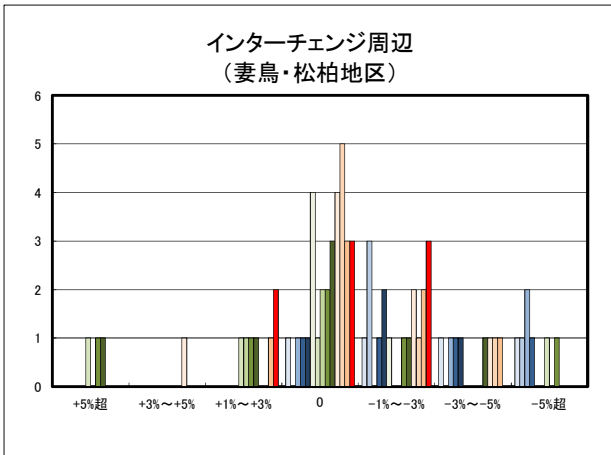
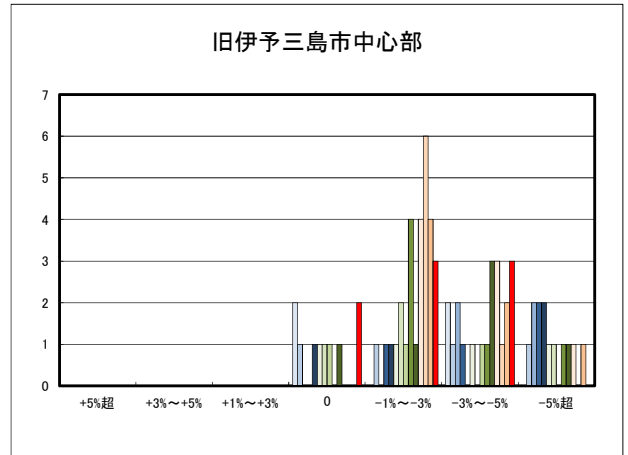
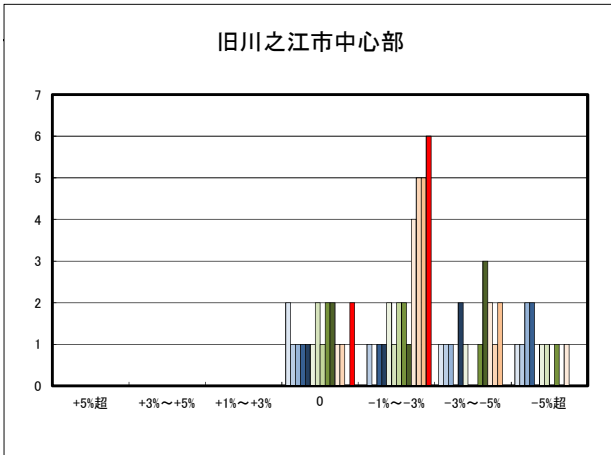
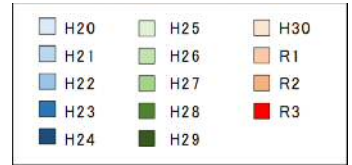
○四国中央市の過去1年間の地価動向の実感



○四国中央市の今後1年間の地価動向の予測



○四国中央市住宅地(地域別)の過去1年間の地価動向について



○四国中央市商業地(地域別)の過去1年間の地価動向について

