



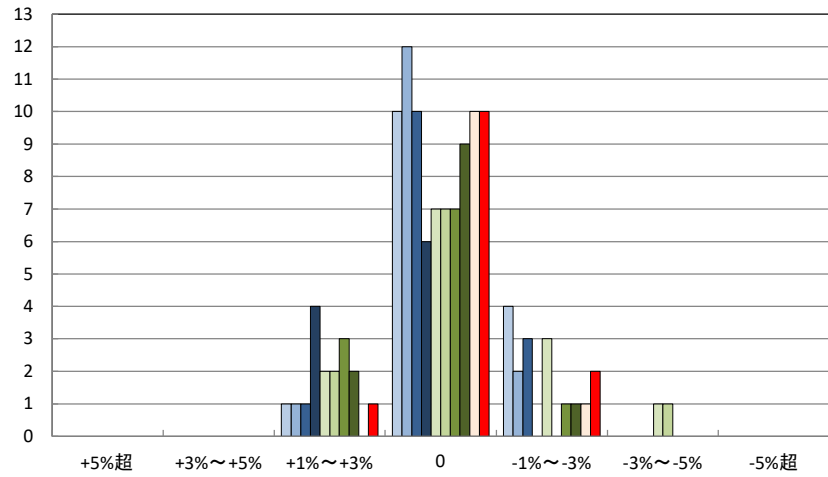






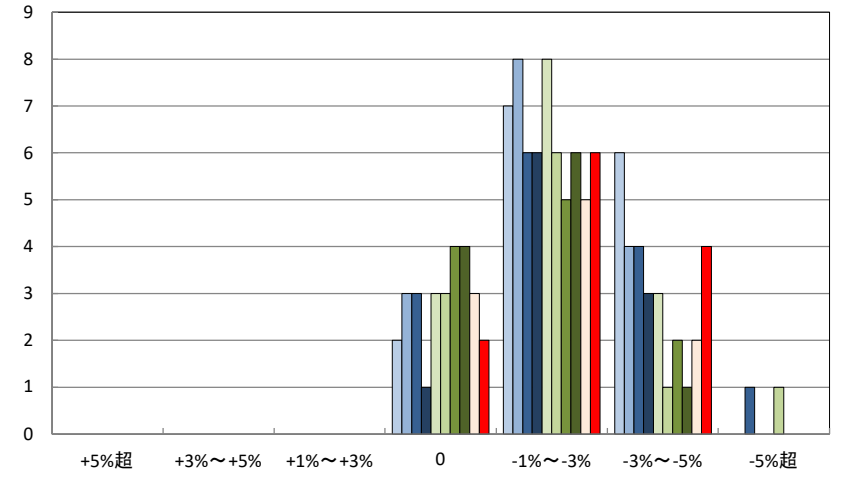
富田小学校区

■ H29.10 ■ H30.10 ■ R1.9 ■ R2.9 ■ R3.9 ■ R4.4 ■ R4.9 ■ R5.3 ■ R5.9 ■ R6.3



桜井小学校区

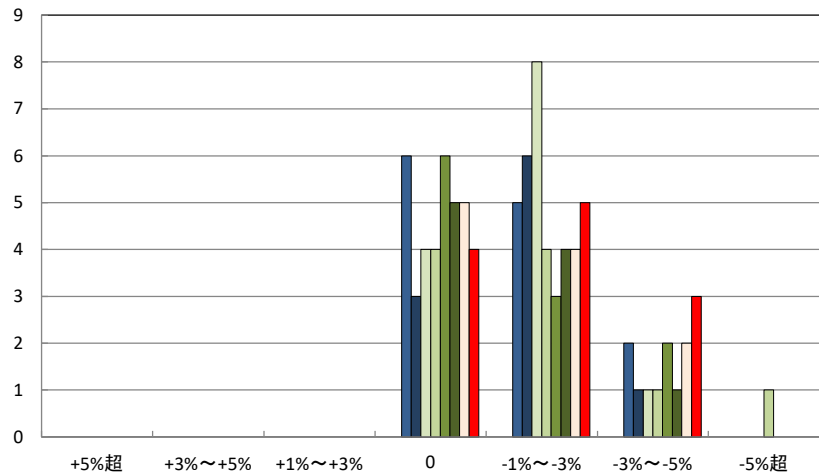
■ H29.10 ■ H30.10 ■ R1.9 ■ R2.9 ■ R3.9 ■ R4.4 ■ R4.9 ■ R5.3 ■ R5.9 ■ R6.3



※R1年から実施

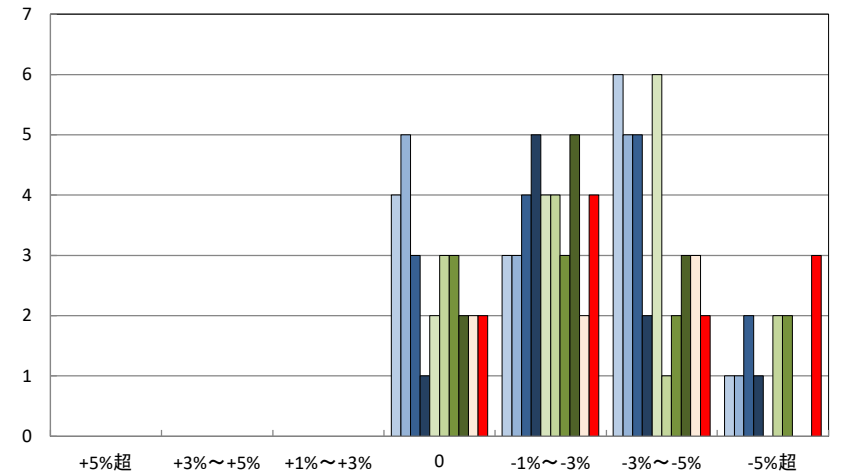
国分小学校区

■ H29.10 ■ H30.10 ■ R1.9 ■ R2.9 ■ R3.9 ■ R4.4 ■ R4.9 ■ R5.3 ■ R5.9 ■ R6.3



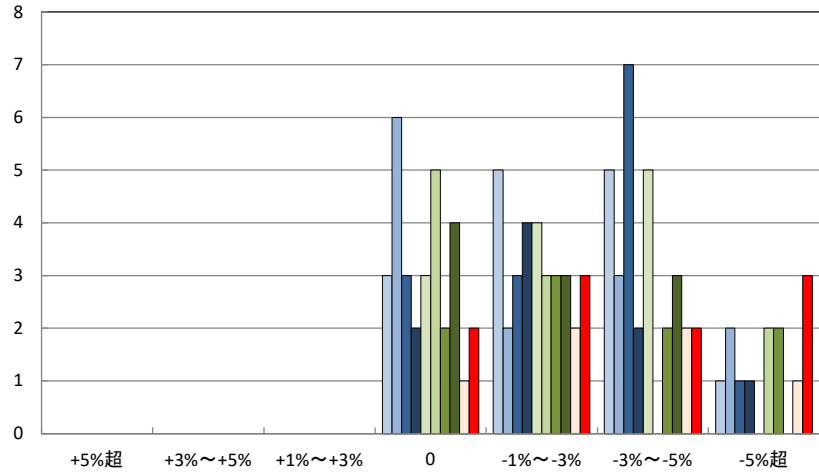
朝倉小学校区

■ H29.10 ■ H30.10 ■ R1.9 ■ R2.9 ■ R3.9 ■ R4.4 ■ R4.9 ■ R5.3 ■ R5.9 ■ R6.3



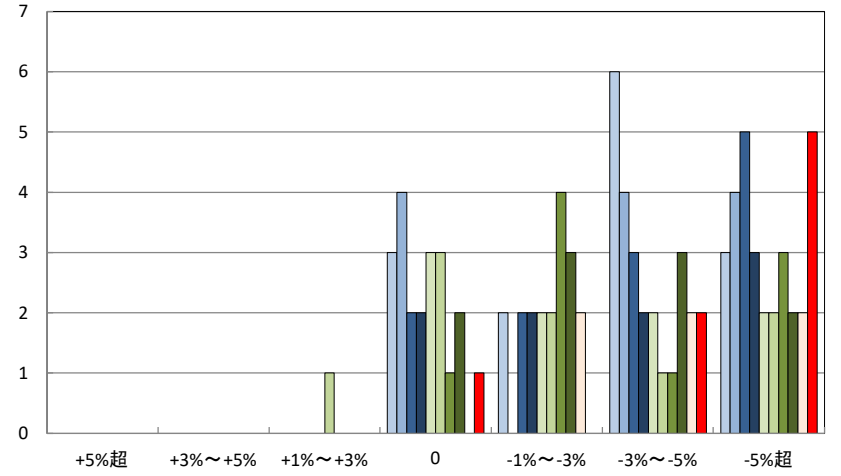
鴨部・九和小学校区

H29.10 H30.10 R1.9 R2.9 R3.9 R4.4 R4.9 R5.3 R5.9 R6.3



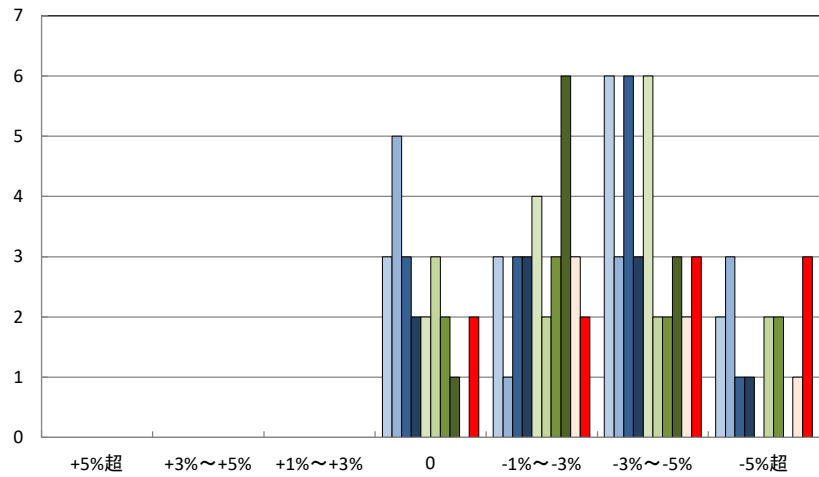
島しょ部地区

H29.10 H30.10 R1.9 R2.9 R3.9 R4.4 R4.9 R5.3 R5.9 R6.3



亀岡・菊間小学校区

H29.10 H30.10 R1.9 R2.9 R3.9 R4.4 R4.9 R5.3 R5.9 R6.3





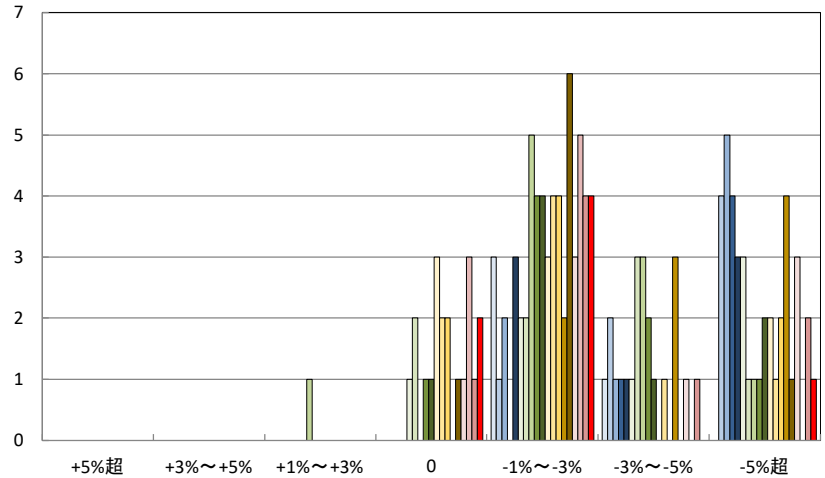






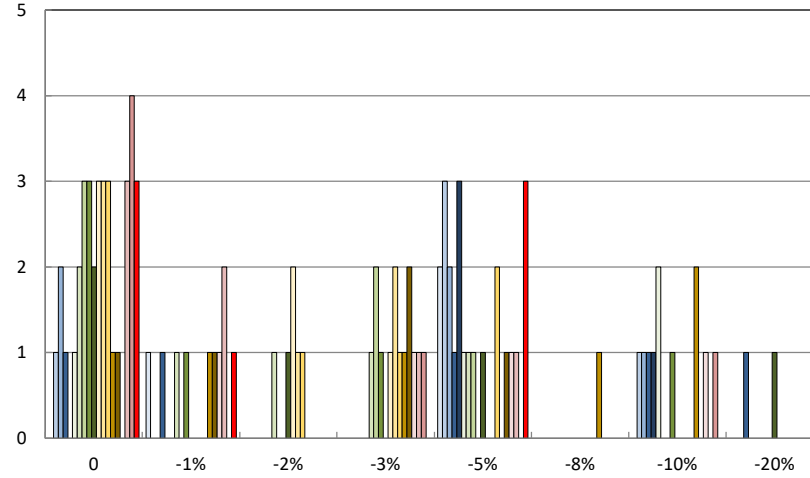
保田地区

H20.11 H21.11 H22.11 H23.11 H24.11 H25.11 H26.11 H27.11 H28.11 H29.10  
H30.10 R1.9 R2.9 R3.9 R4.4 R4.9 R5.3 R5.9 R6.3



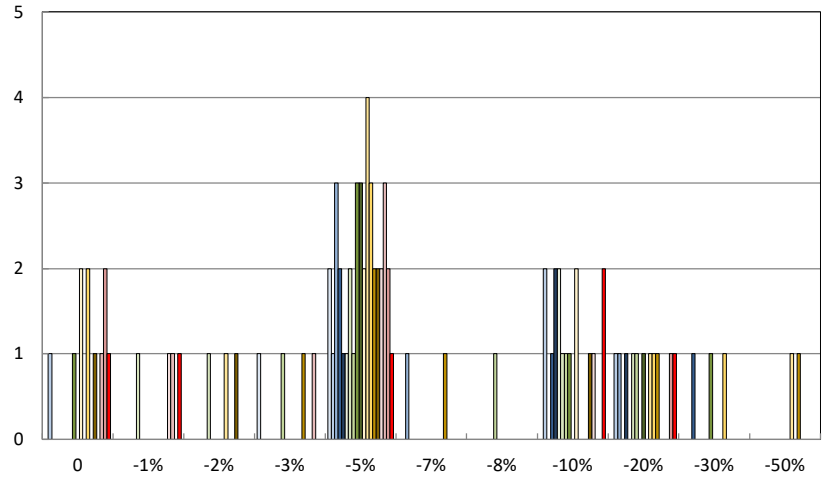
旧三間町中心部

H20.11 H21.11 H22.11 H23.11 H24.11 H25.11 H26.11 H27.11 H28.11 H29.10  
H30.10 R1.9 R2.9 R3.9 R4.4 R4.9 R5.3 R5.9 R6.3



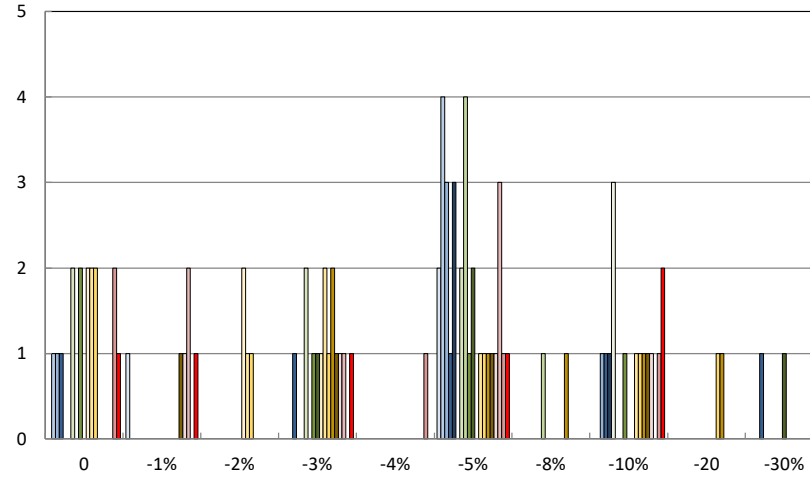
旧吉田町中心部

H20.11 H21.11 H22.11 H23.11 H24.11 H25.11 H26.11 H27.11 H28.11 H29.10  
H30.10 R1.9 R2.9 R3.9 R4.4 R4.9 R5.3 R5.9 R6.3



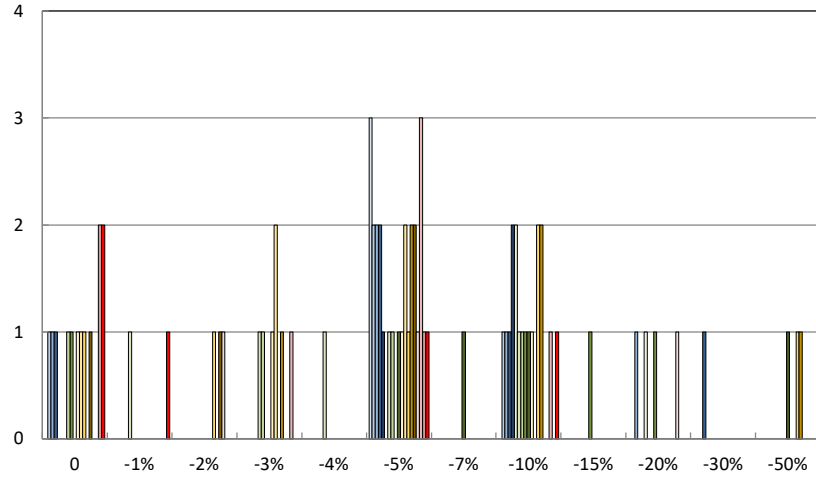
旧津島町中心部

H20.11 H21.11 H22.11 H23.11 H24.11 H25.11 H26.11 H27.11 H28.11 H29.10  
H30.10 R1.9 R2.9 R3.9 R4.4 R4.9 R5.3 R5.9 R6.3



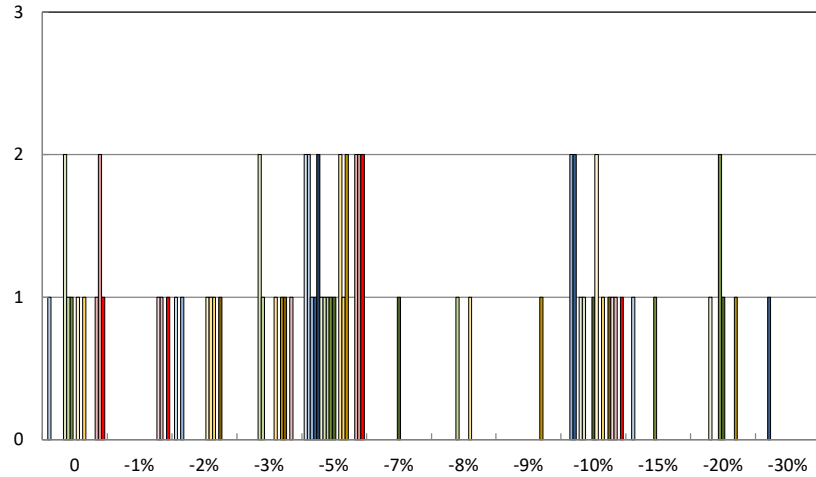
### 三浦半島地区

□ H20.11 □ H21.11 □ H22.11 □ H23.11 □ H24.11 □ H25.11 □ H26.11 □ H27.11 □ H28.11 □ H29.10  
□ H30.10 □ R1.9 □ R2.9 □ R3.9 □ R4.4 □ R4.9 □ R5.3 □ R5.9 □ R6.3

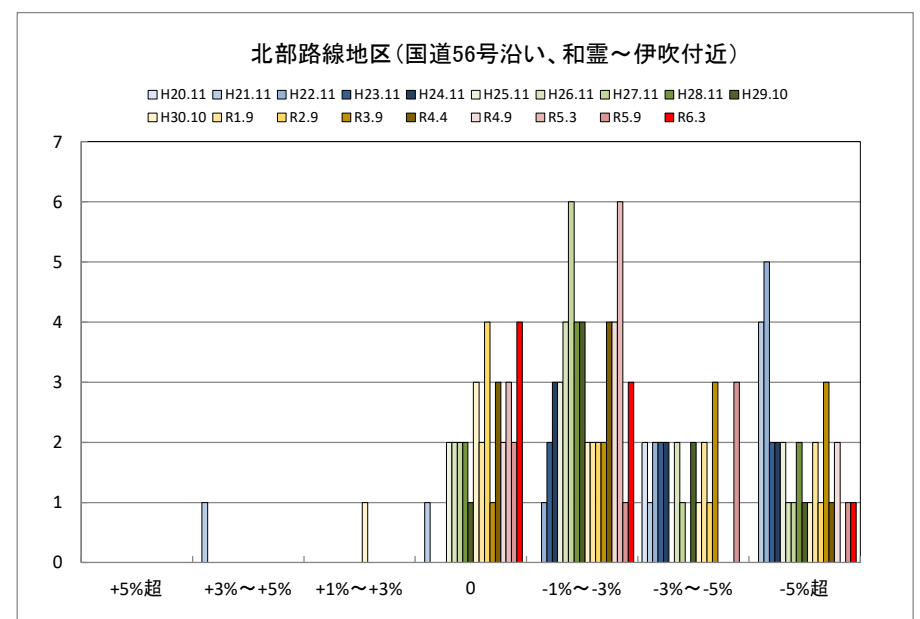
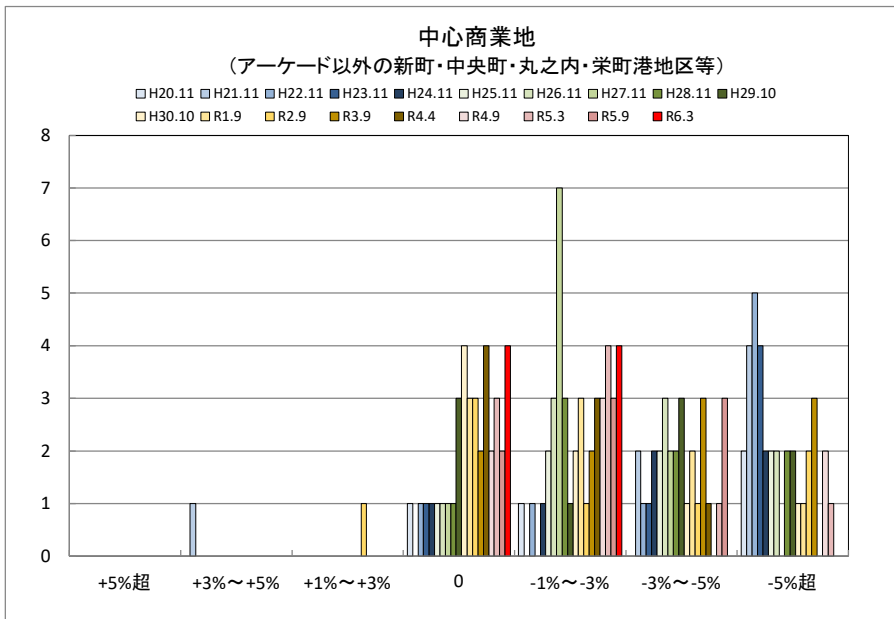
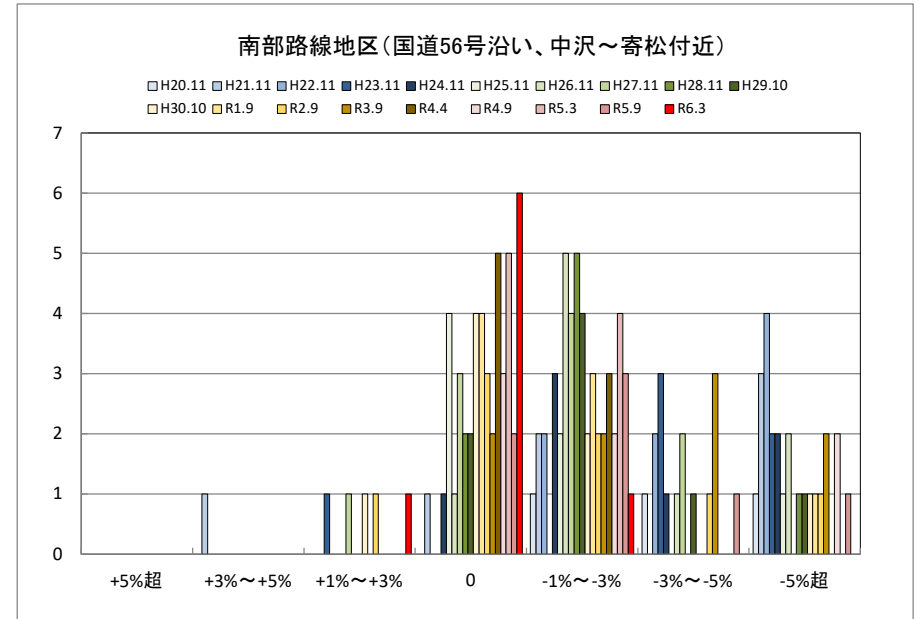
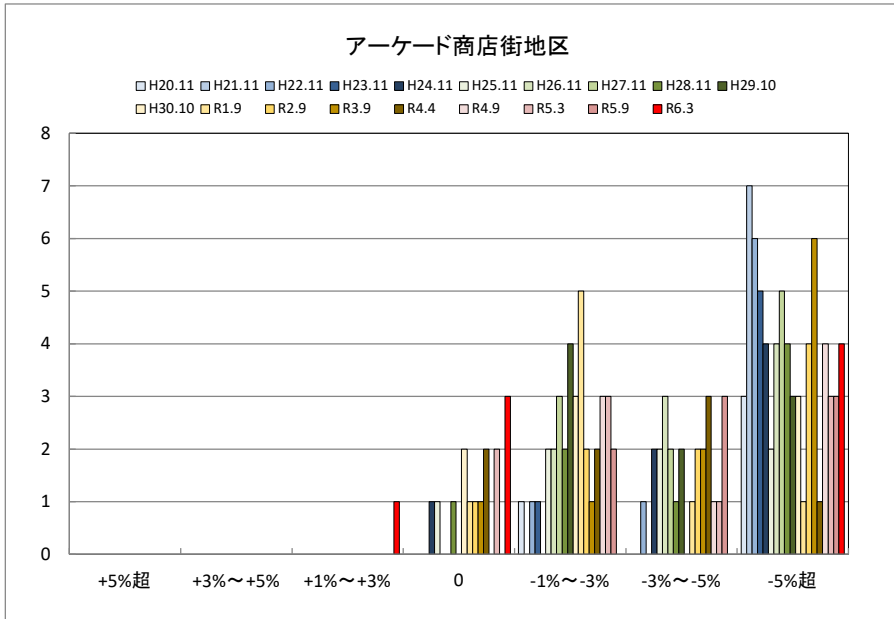


### 旧町(内陸)集落地区

□ H20.11 □ H21.11 □ H22.11 □ H23.11 □ H24.11 □ H25.11 □ H26.11 □ H27.11 □ H28.11 □ H29.10  
□ H30.10 □ R1.9 □ R2.9 □ R3.9 □ R4.4 □ R4.9 □ R5.3 □ R5.9 □ R6.3

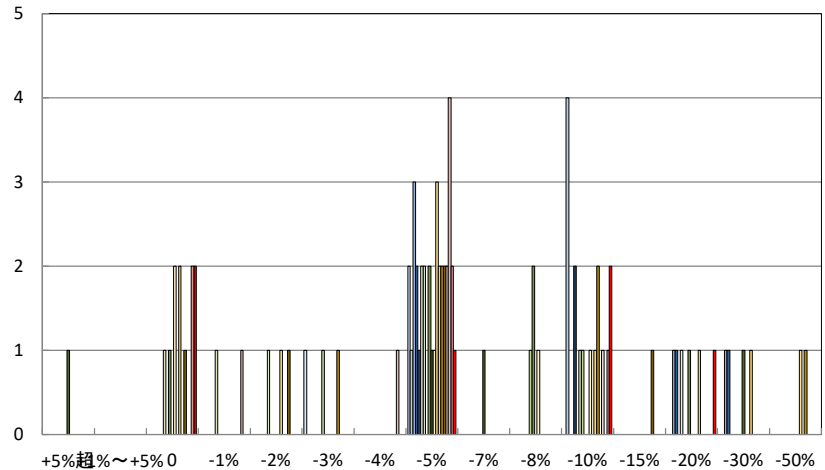


○宇和島市商業地(地域別)の過去6ヶ月間の地価動向について



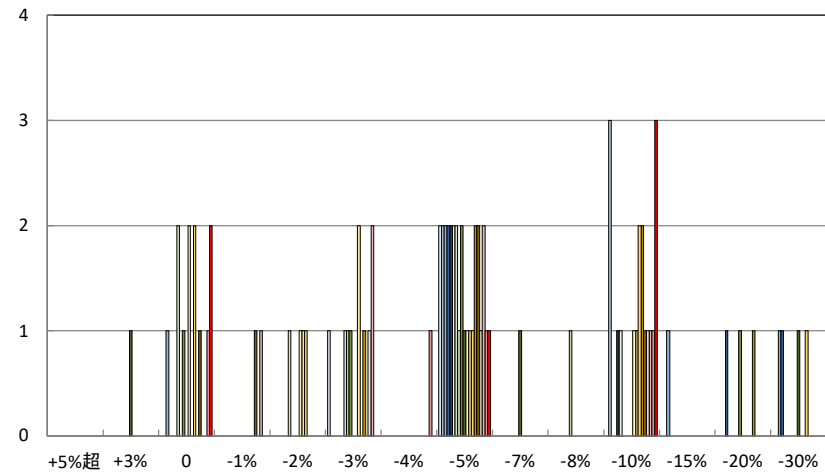
### 旧吉田町中心部商業地

□ H20.11 □ H21.11 □ H22.11 ■ H23.11 ■ H24.11 □ H25.11 □ H26.11 □ H27.11 ■ H28.11 ■ H29.10  
 □ H30.10 □ R1.9 □ R2.9 ■ R3.9 ■ R4.4 □ R4.9 □ R5.3 □ R5.9 ■ R6.3



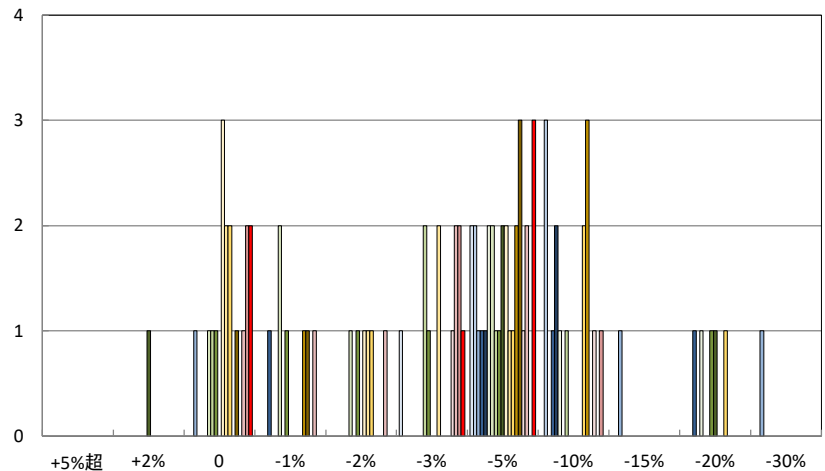
### 旧津島町中心部商業地

□ H20.11 □ H21.11 □ H22.11 ■ H23.11 ■ H24.11 □ H25.11 □ H26.11 □ H27.11 ■ H28.11 ■ H29.10  
 □ H30.10 □ R1.9 □ R2.9 ■ R3.9 ■ R4.4 □ R4.9 □ R5.3 □ R5.9 ■ R6.3



### 旧三間町中心部商業地

□ H20.11 □ H21.11 □ H22.11 ■ H23.11 ■ H24.11 □ H25.11 □ H26.11 □ H27.11 ■ H28.11 ■ H29.10  
 □ H30.10 □ R1.9 □ R2.9 ■ R3.9 ■ R4.4 □ R4.9 □ R5.3 □ R5.9 ■ R6.3





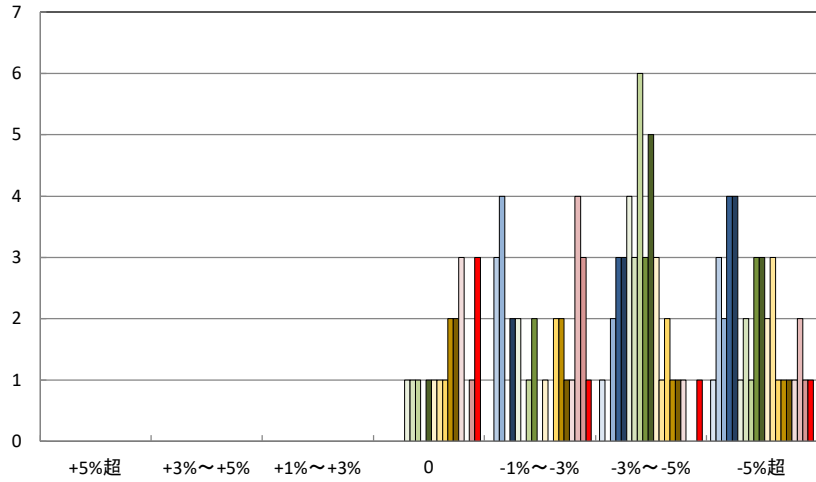






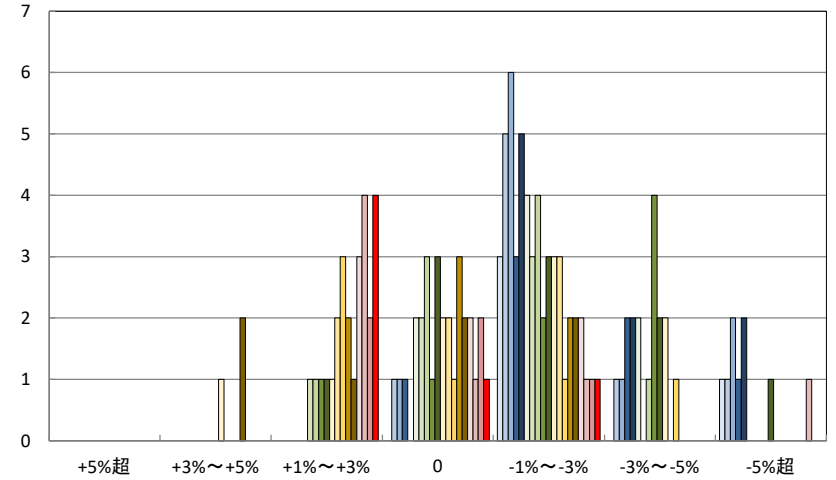
日土地区

H20.11 H21.11 H22.11 H23.11 H24.11 H25.11 H26.11 H27.11 H28.11 H29.10  
H30.10 R1.9 R2.9 R3.9 R4.4 R4.9 R5.3 R5.9 R6.3



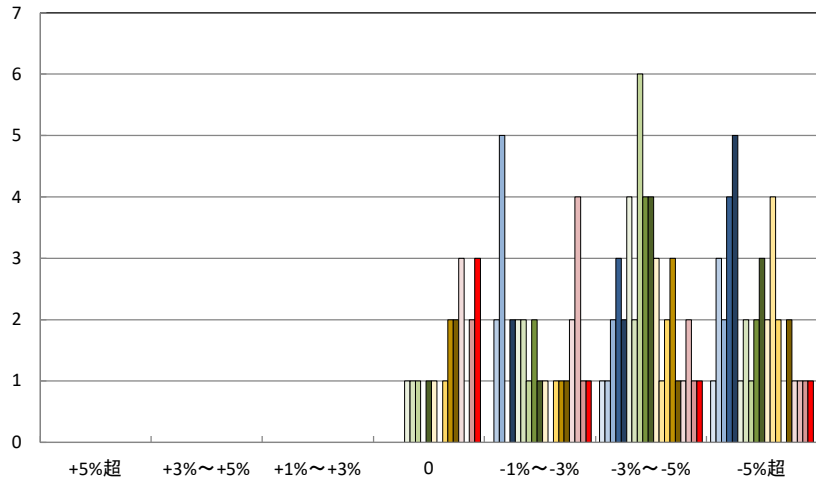
保内町(喜木・宮内)中心部

H20.11 H21.11 H22.11 H23.11 H24.11 H25.11 H26.11 H27.11 H28.11 H29.10  
H30.10 R1.9 R2.9 R3.9 R4.4 R4.9 R5.3 R5.9 R6.3



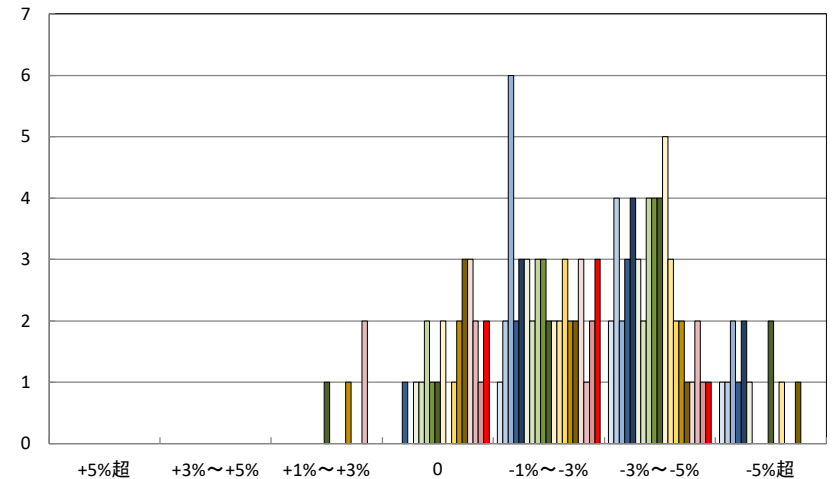
若山・布喜川地区

H20.11 H21.11 H22.11 H23.11 H24.11 H25.11 H26.11 H27.11 H28.11 H29.10  
H30.10 R1.9 R2.9 R3.9 R4.4 R4.9 R5.3 R5.9 R6.3



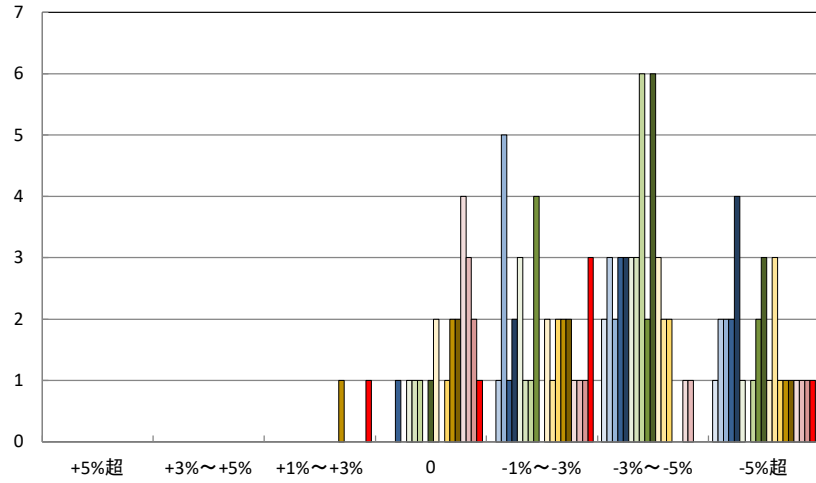
保内町川之石地区

H20.11 H21.11 H22.11 H23.11 H24.11 H25.11 H26.11 H27.11 H28.11 H29.10  
H30.10 R1.9 R2.9 R3.9 R4.4 R4.9 R5.3 R5.9 R6.3

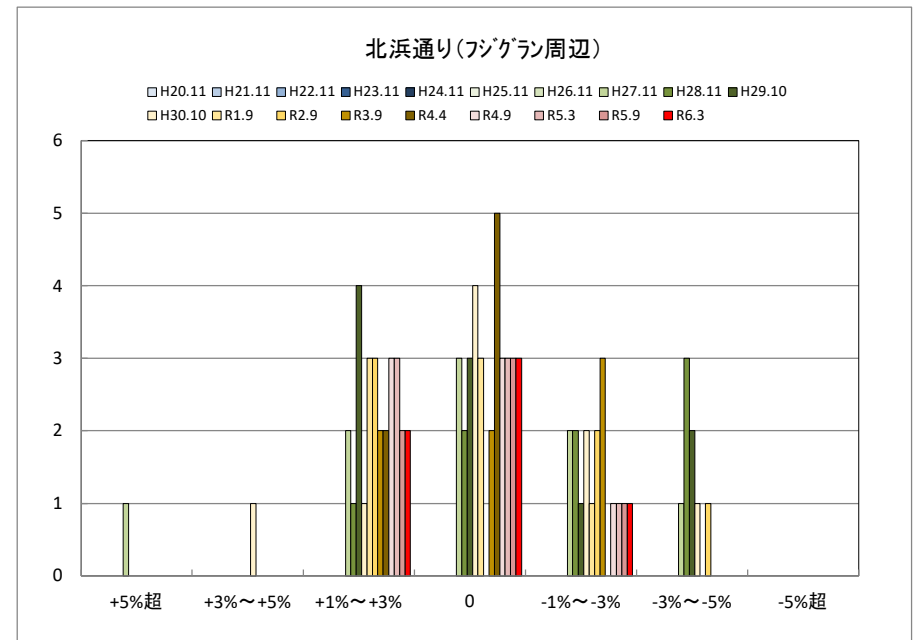
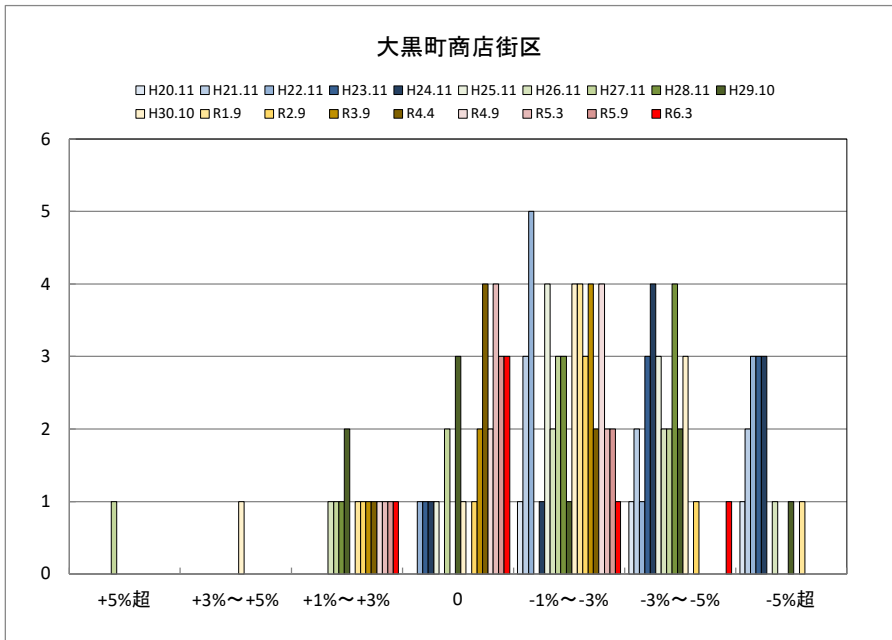
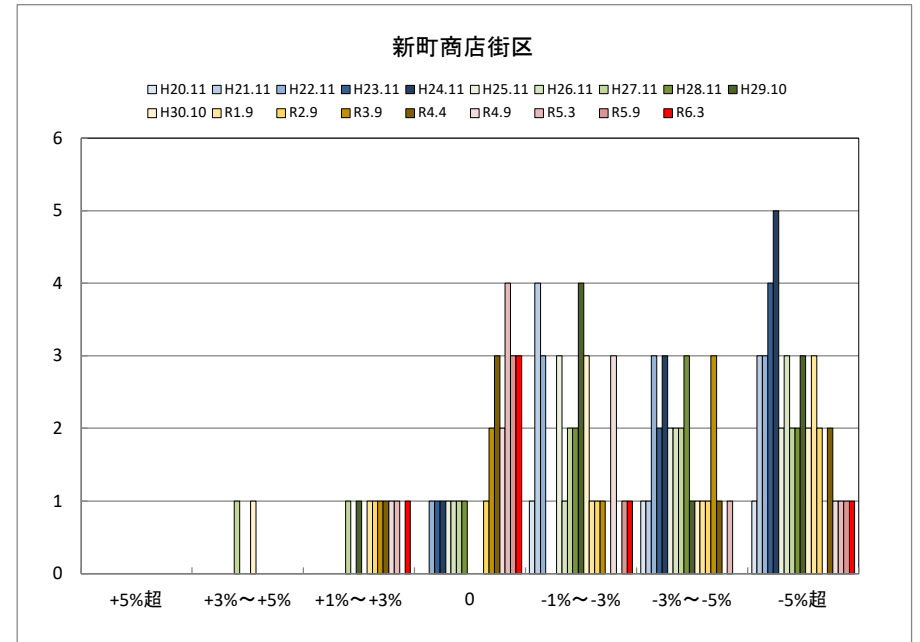
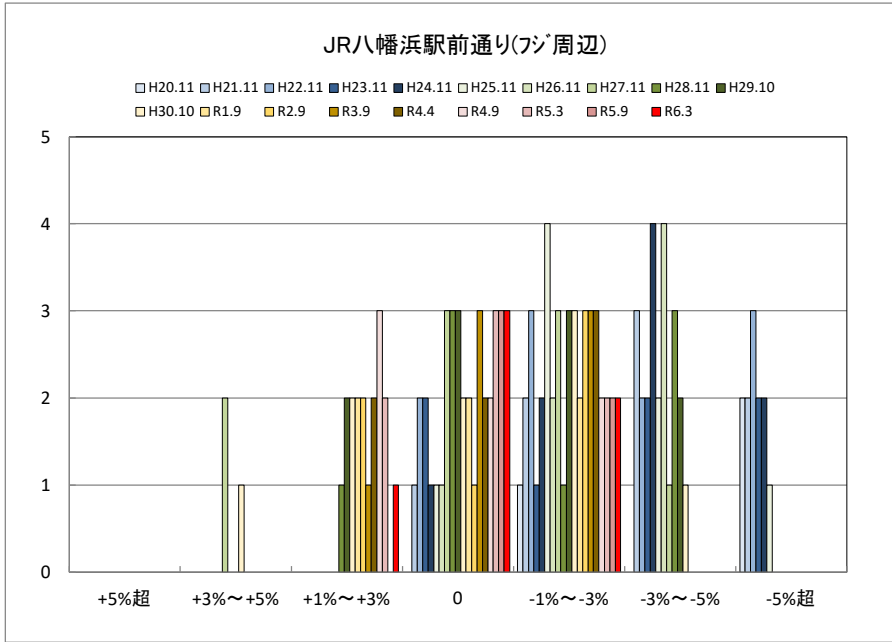


### 保内町集落部

□ H20.11 □ H21.11 □ H22.11 ■ H23.11 ■ H24.11 □ H25.11 □ H26.11 □ H27.11 ■ H28.11 ■ H29.10  
 □ H30.10 □ R1.9 □ R2.9 ■ R3.9 ■ R4.4 □ R4.9 □ R5.3 □ R5.9 ■ R6.3



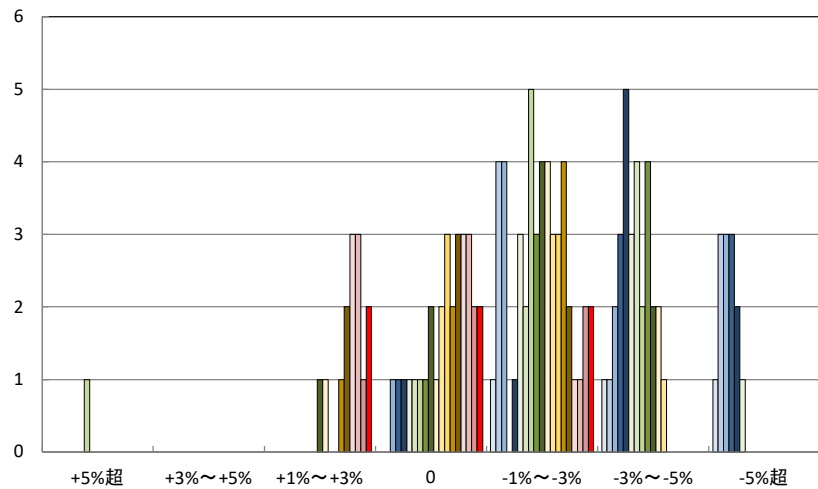
○八幡浜市商業地(地域別)の過去6ヶ月間の地価動向について



※ H27年から実施

### 産業通り周辺

□ H20.11 □ H21.11 □ H22.11 ■ H23.11 ■ H24.11 □ H25.11 □ H26.11 □ H27.11 ■ H28.11 ■ H29.10  
 □ H30.10 □ R1.9 □ R2.9 ■ R3.9 ■ R4.4 □ R4.9 □ R5.3 □ R5.9 ■ R6.3

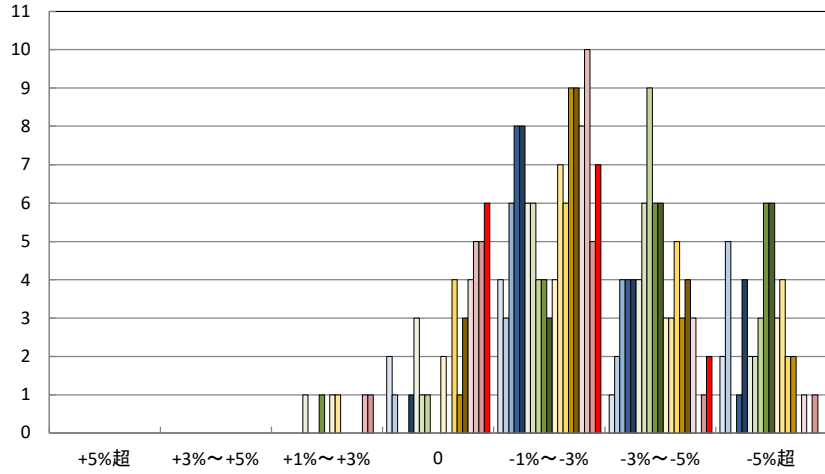




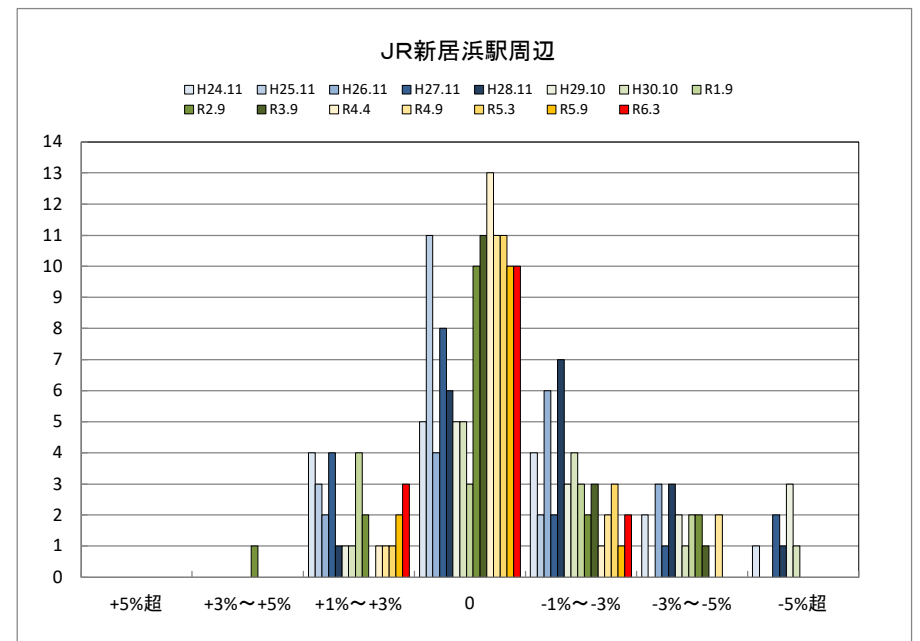
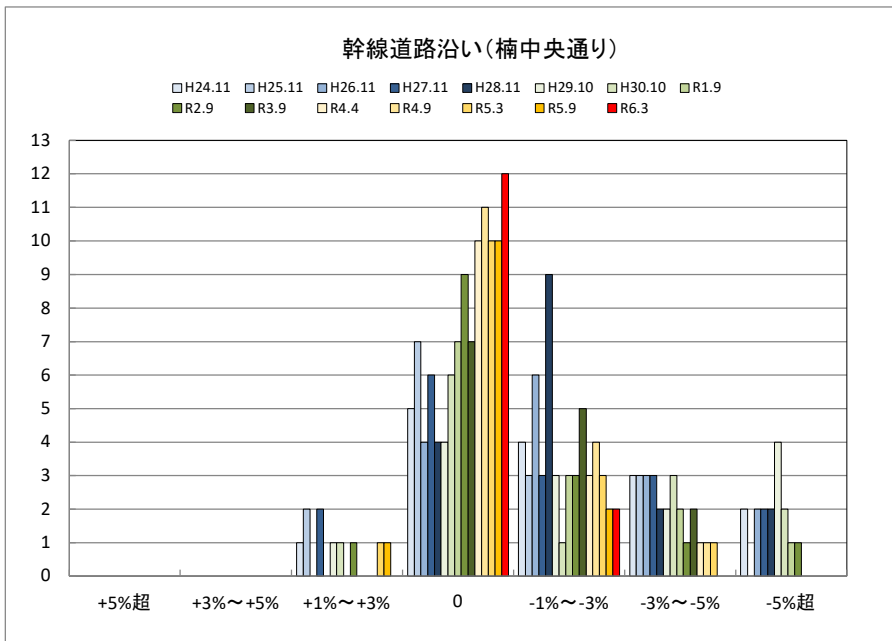
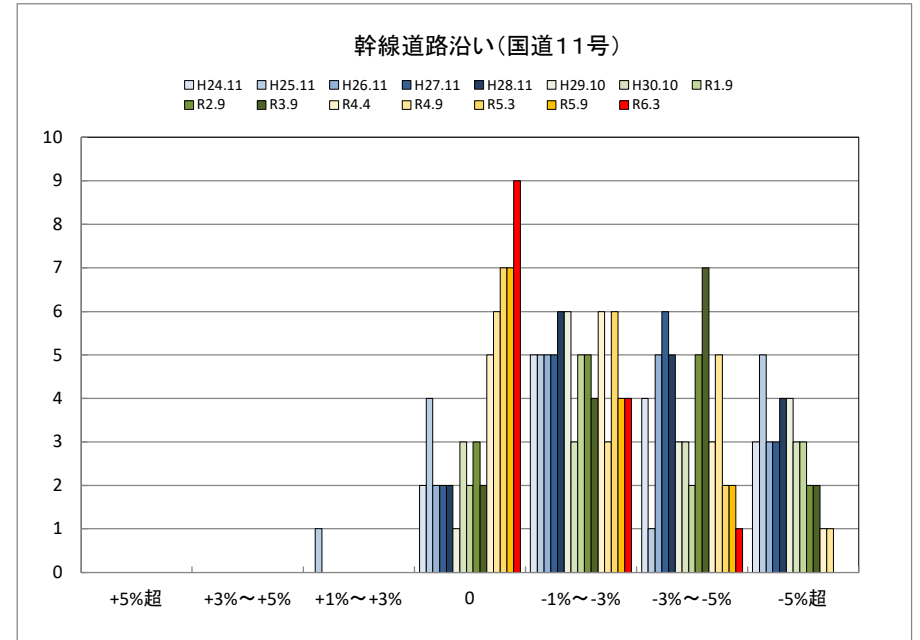
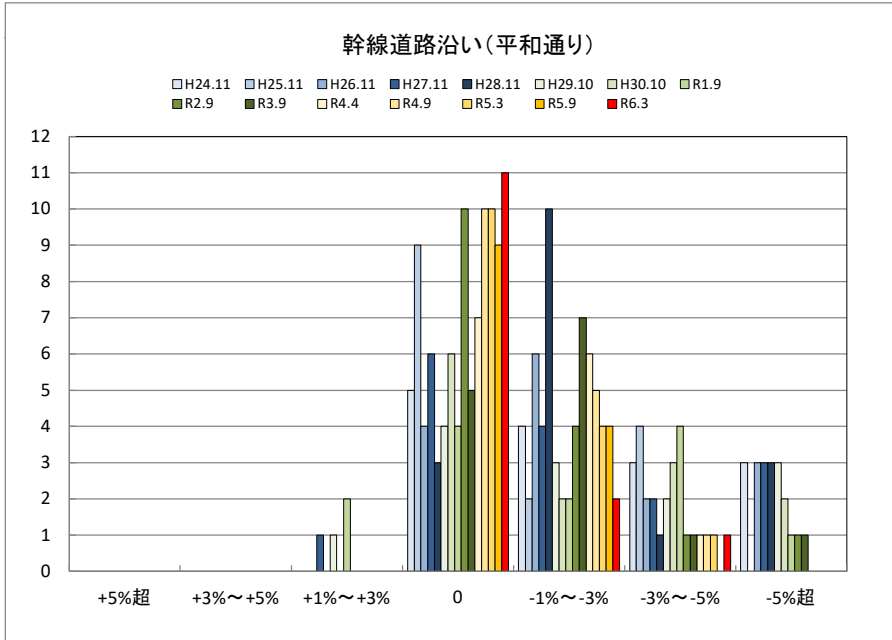


### 上部地区

□H20.11 □H21.11 □H22.11 ■H23.11 ■H24.11 □H25.11 □H26.11 □H27.11 ■H28.11 ■H29.10  
 □H30.10 □R1.9 □R2.9 ■R3.9 ■R4.4 □R4.9 □R5.3 □R5.9 ■R6.3



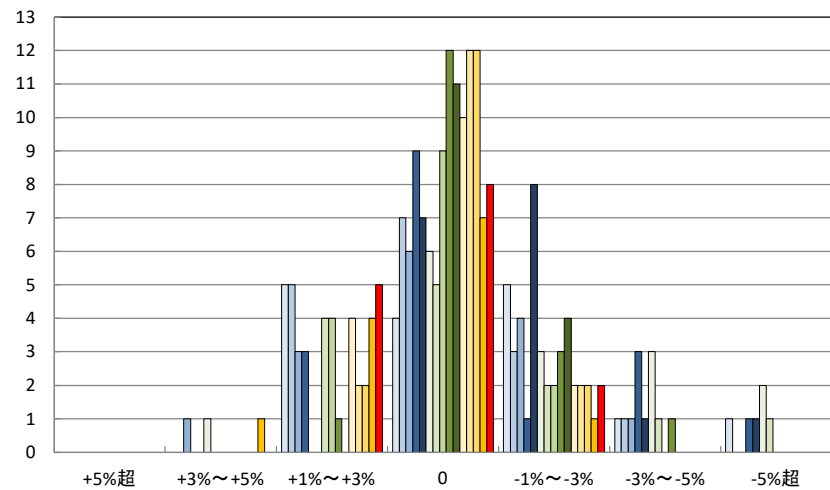
○新居浜市商業地(地域別)の過去6ヶ月間の地価動向について





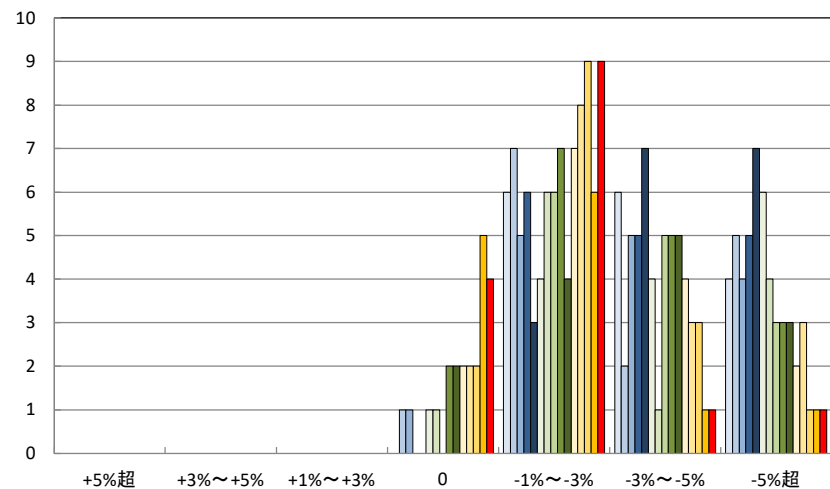
### イオンモール新居浜周辺

□ H24.11 □ H25.11 □ H26.11 □ H27.11 □ H28.11 □ H29.10 □ H30.10 □ R1.9  
 ■ R2.9 ■ R3.9 □ R4.4 □ R4.9 □ R5.3 □ R5.9 ■ R6.3



### 昭和通り・登り道商店街

□ H24.11 □ H25.11 □ H26.11 □ H27.11 □ H28.11 □ H29.10 □ H30.10 □ R1.9  
 ■ R2.9 ■ R3.9 □ R4.4 □ R4.9 □ R5.3 □ R5.9 ■ R6.3







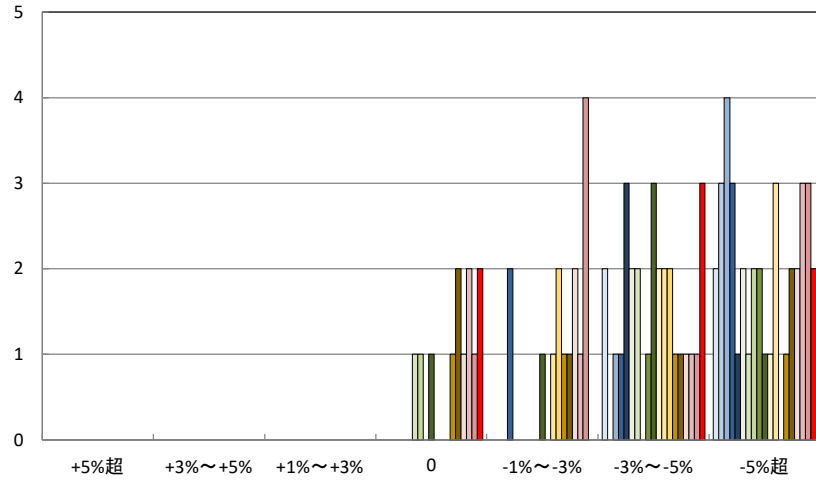






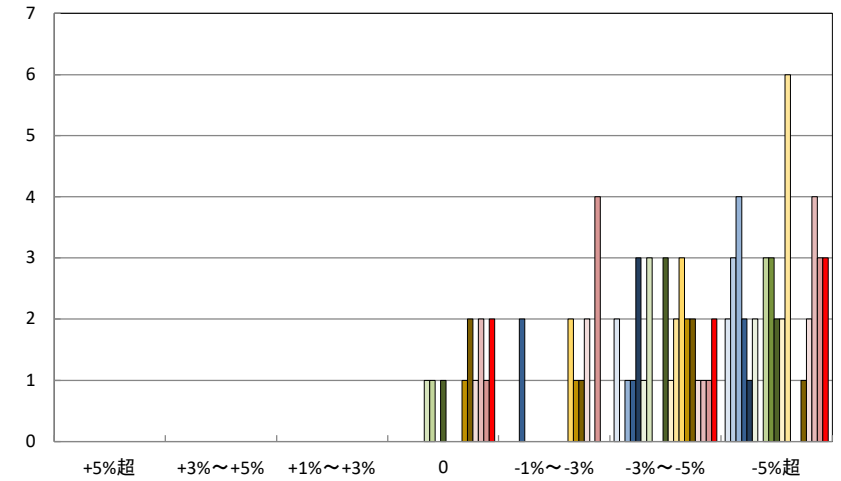
### 平野町地区

□ H20.11 □ H21.11 □ H22.11 ■ H23.11 ■ H24.11 □ H25.11 □ H26.11 □ H27.11 ■ H28.11 ■ H29.10  
 □ H30.10 □ R1.9 □ R2.9 ■ R3.9 ■ R4.4 □ R4.9 □ R5.3 □ R5.9 ■ R6.3



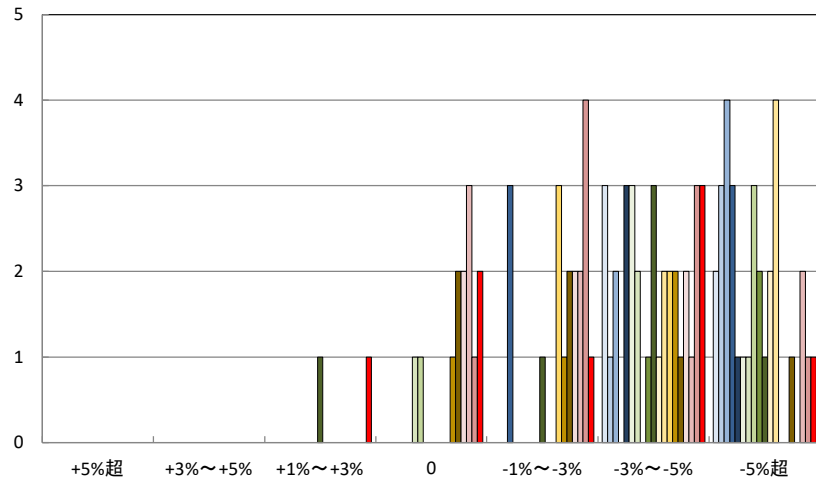
### 春賀・八多喜地区

□ H20.11 □ H21.11 □ H22.11 ■ H23.11 ■ H24.11 □ H25.11 □ H26.11 □ H27.11 ■ H28.11 ■ H29.10  
 □ H30.10 □ R1.9 □ R2.9 ■ R3.9 ■ R4.4 □ R4.9 □ R5.3 □ R5.9 ■ R6.3



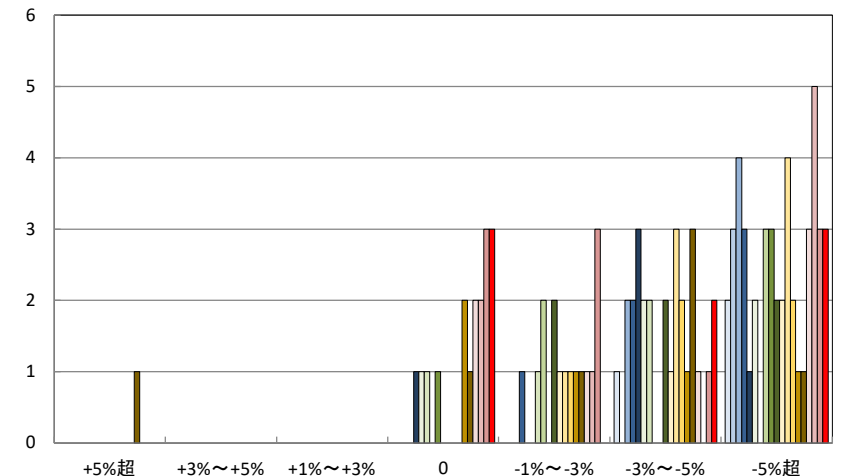
### 新谷・菅田町地区

□ H20.11 □ H21.11 □ H22.11 ■ H23.11 ■ H24.11 □ H25.11 □ H26.11 □ H27.11 ■ H28.11 ■ H29.10  
 □ H30.10 □ R1.9 □ R2.9 ■ R3.9 ■ R4.4 □ R4.9 □ R5.3 □ R5.9 ■ R6.3



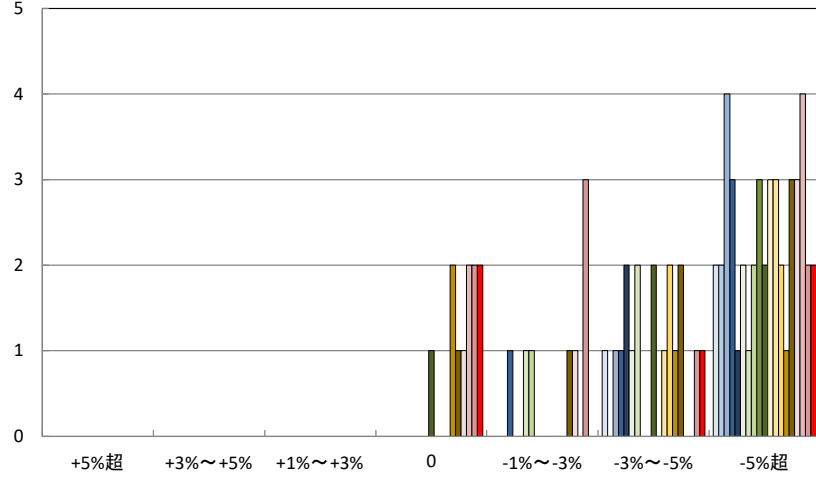
### 長浜町・白滝地区

□ H20.11 □ H21.11 □ H22.11 ■ H23.11 ■ H24.11 □ H25.11 □ H26.11 □ H27.11 ■ H28.11 ■ H29.10  
 □ H30.10 □ R1.9 □ R2.9 ■ R3.9 ■ R4.4 □ R4.9 □ R5.3 □ R5.9 ■ R6.3



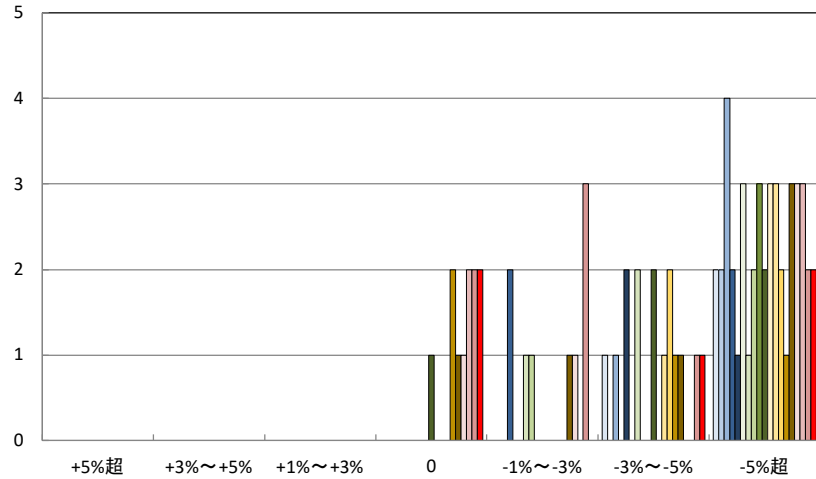
### 肱川町地区

□ H20.11 □ H21.11 □ H22.11 ■ H23.11 ■ H24.11 □ H25.11 □ H26.11 □ H27.11 ■ H28.11 ■ H29.10  
 □ H30.10 □ R1.9 □ R2.9 ■ R3.9 ■ R4.4 □ R4.9 □ R5.3 □ R5.9 ■ R6.3



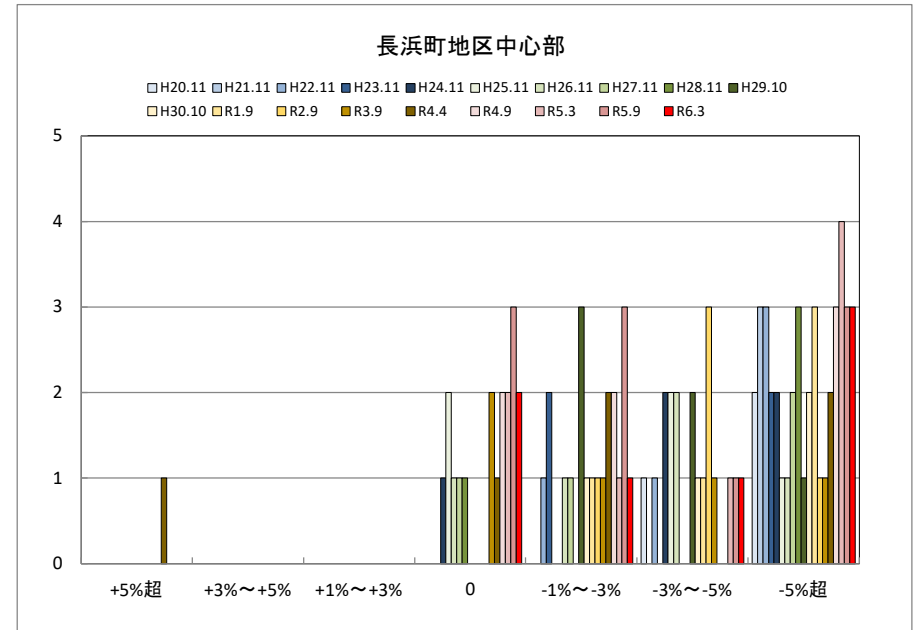
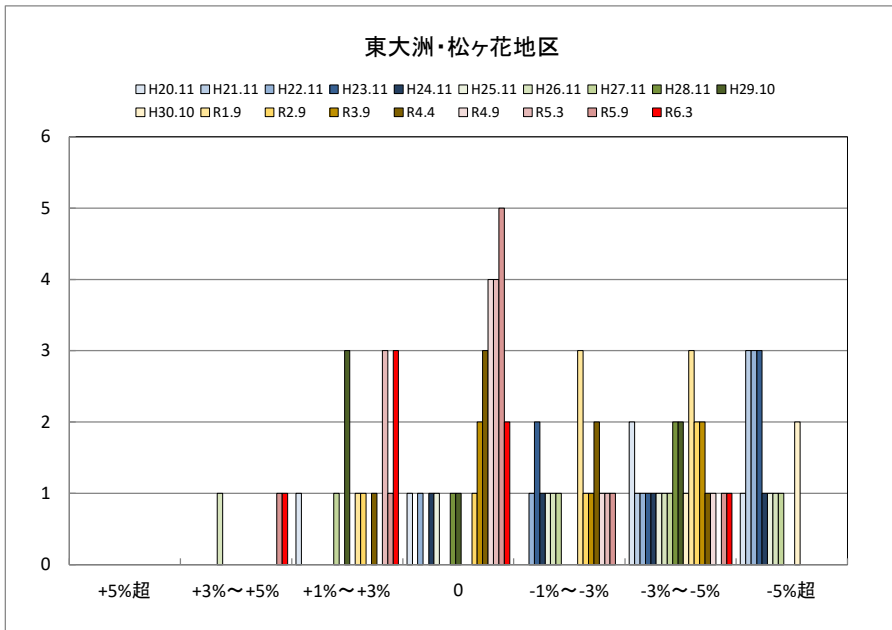
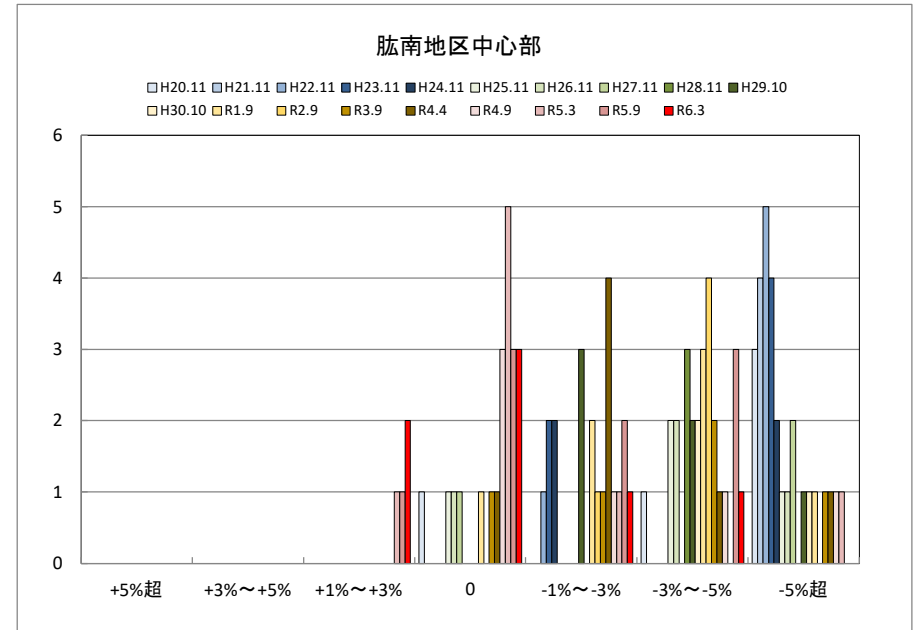
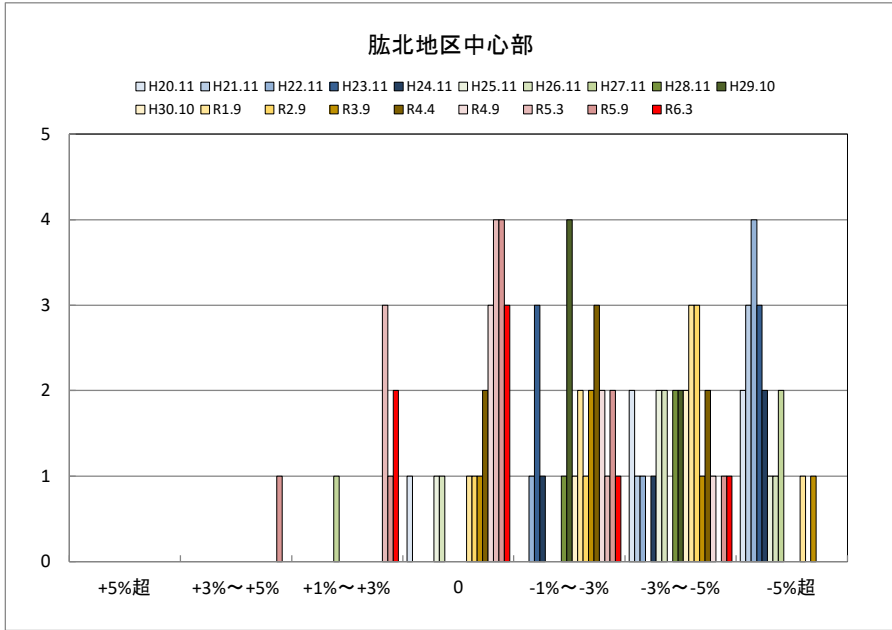
### 河边町地区

□ H20.11 □ H21.11 □ H22.11 ■ H23.11 ■ H24.11 □ H25.11 □ H26.11 □ H27.11 ■ H28.11 ■ H29.10  
 □ H30.10 □ R1.9 □ R2.9 ■ R3.9 ■ R4.4 □ R4.9 □ R5.3 □ R5.9 ■ R6.3



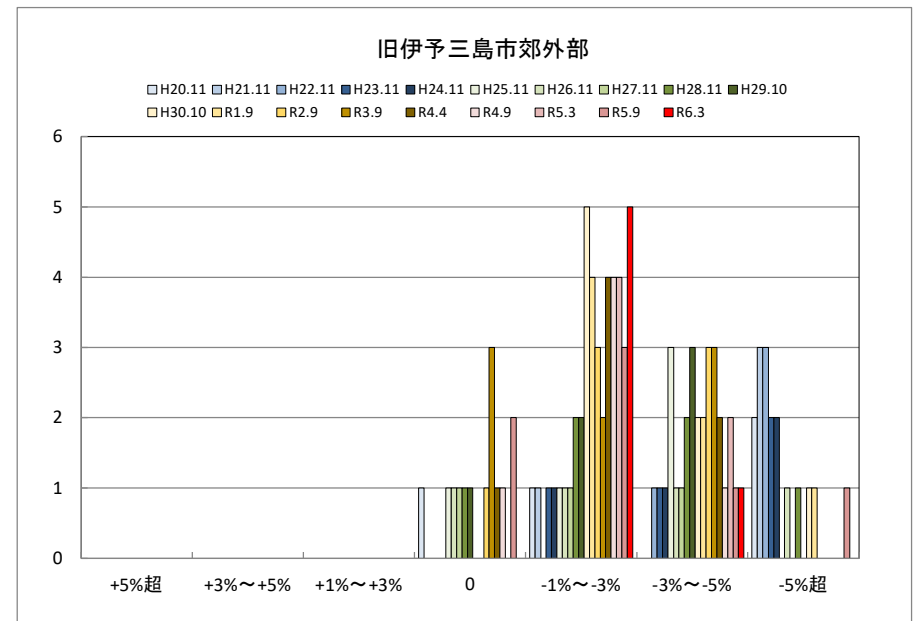
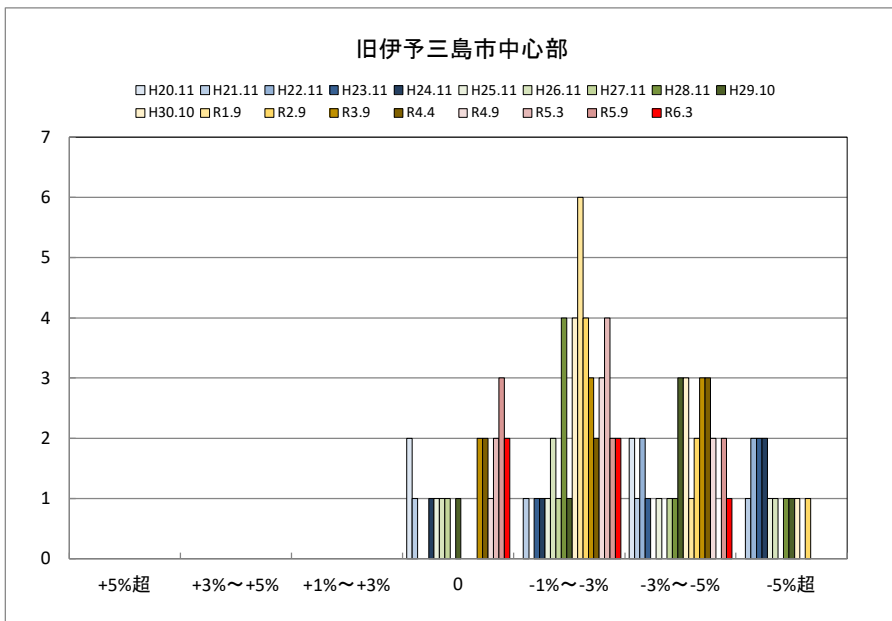
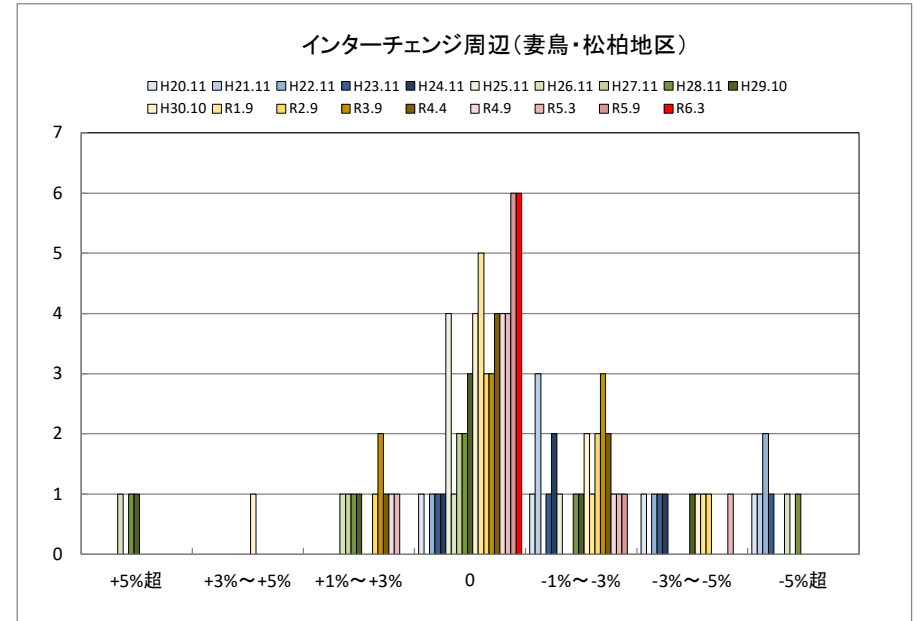
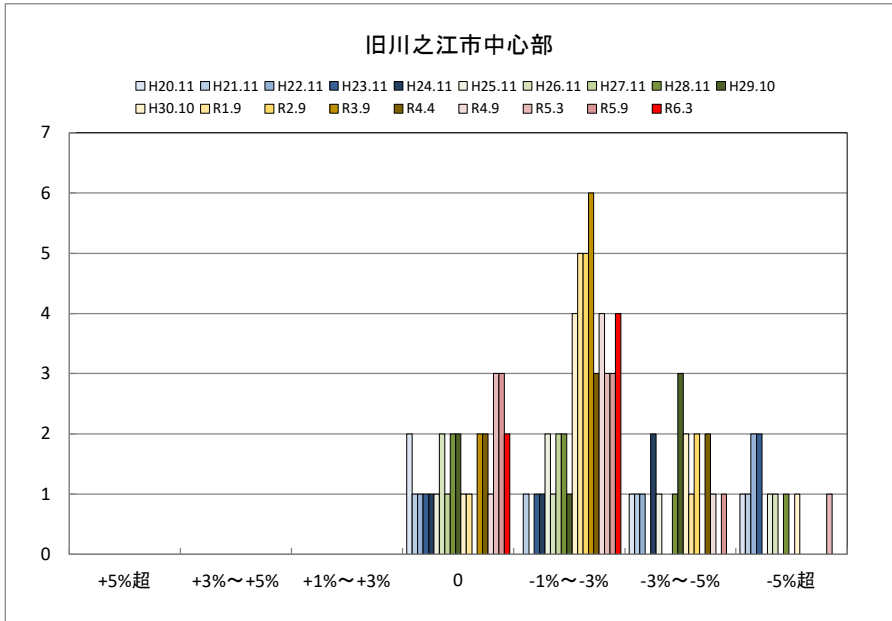


○大洲市商業地(地域別)の過去6ヶ月間の地価動向について



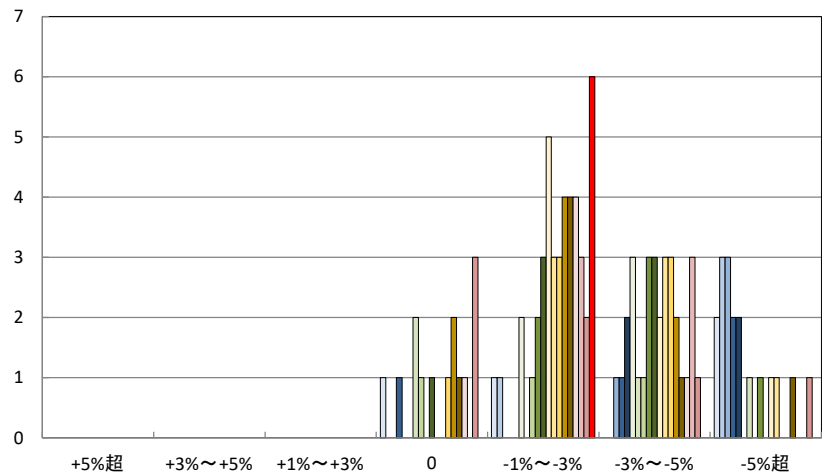


○四国中央市住宅地(地域別)の過去6ヶ月間の地価動向について



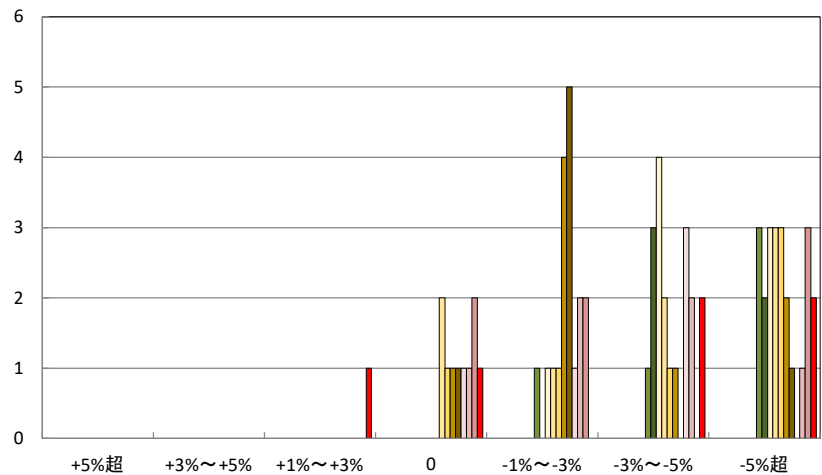
### 旧川之江市郊外部

□ H20.11 □ H21.11 □ H22.11 ■ H23.11 ■ H24.11 □ H25.11 □ H26.11 □ H27.11 ■ H28.11 ■ H29.10  
 □ H30.10 □ R1.9 □ R2.9 ■ R3.9 ■ R4.4 □ R4.9 □ R5.3 □ R5.9 ■ R6.3



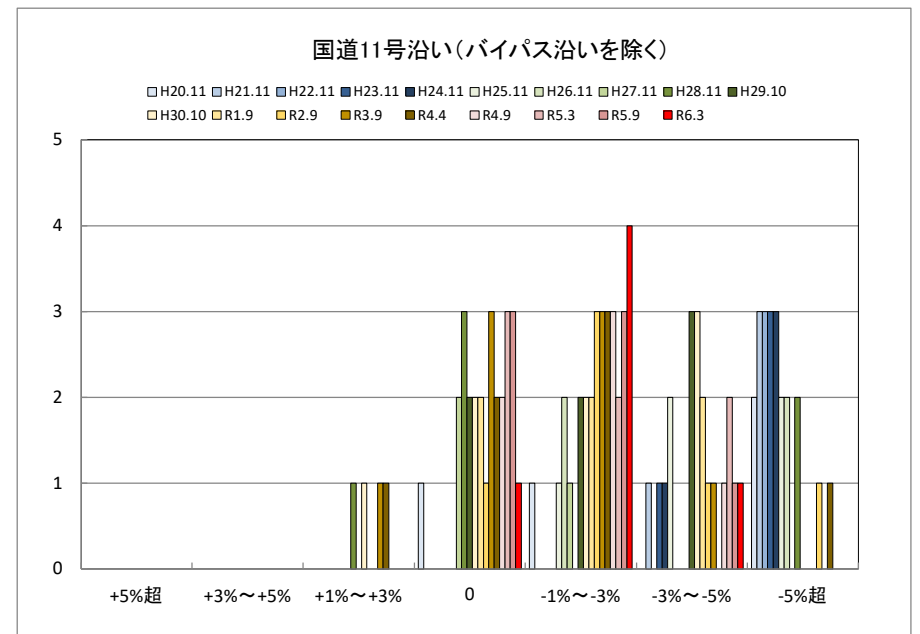
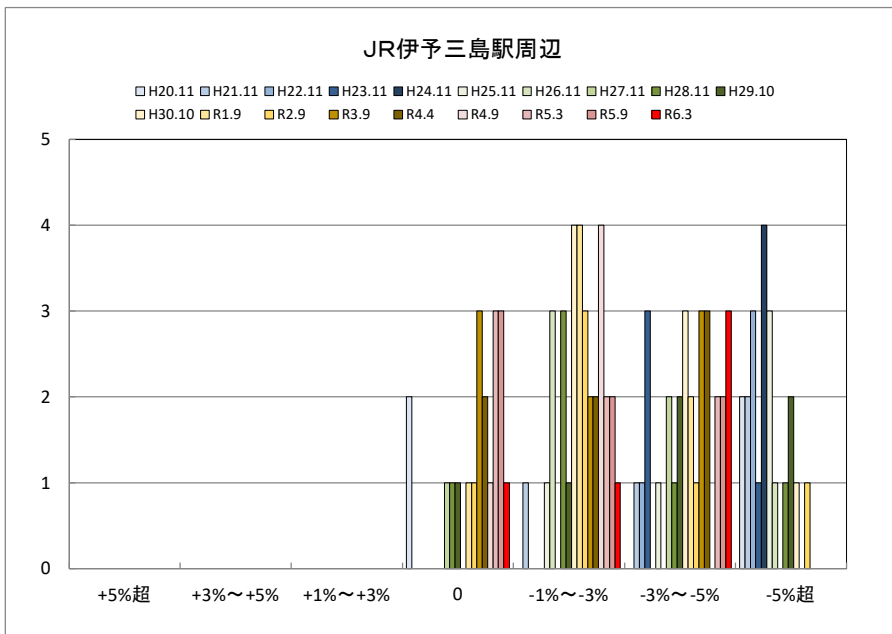
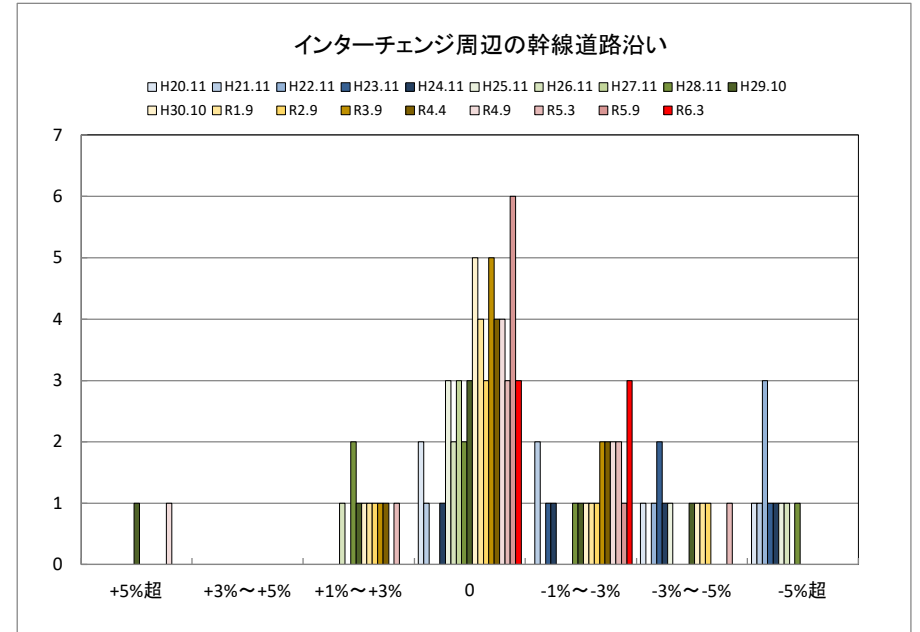
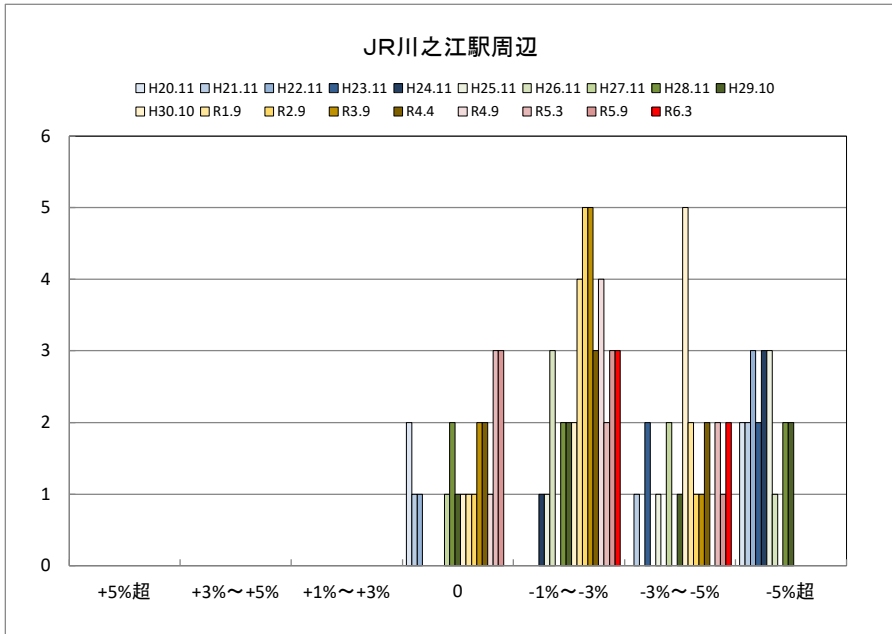
### 土居町

□ H20.11 □ H21.11 □ H22.11 ■ H23.11 ■ H24.11 □ H25.11 □ H26.11 □ H27.11 ■ H28.11 ■ H29.10  
 □ H30.10 □ R1.9 □ R2.9 ■ R3.9 ■ R4.4 □ R4.9 □ R5.3 □ R5.9 ■ R6.3



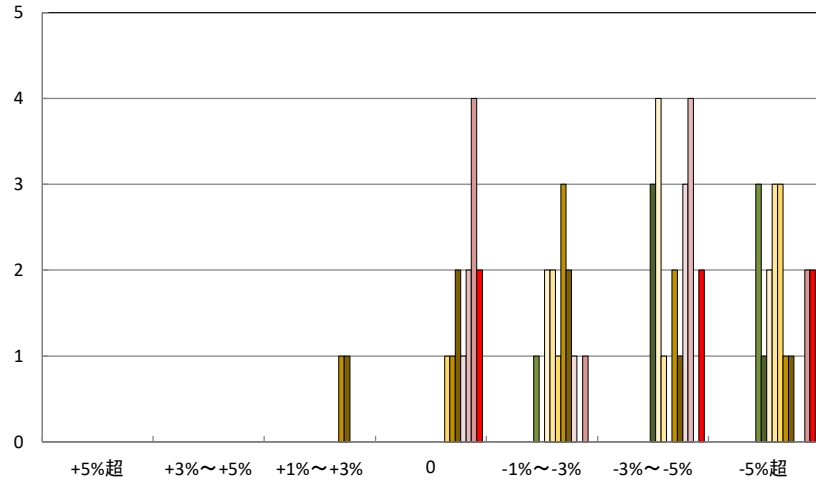
※ 土居町:平成28年から調査実施

○四国中央市商業地(地域別)の過去6ヶ月間の地価動向について



### 土居町

□ H20.11 □ H21.11 □ H22.11 ■ H23.11 ■ H24.11 □ H25.11 □ H26.11 □ H27.11 ■ H28.11 ■ H29.10  
 □ H30.10 □ R1.9 □ R2.9 ■ R3.9 ■ R4.4 □ R4.9 □ R5.3 □ R5.9 ■ R6.3



※ 土居町:平成28年から調査実施