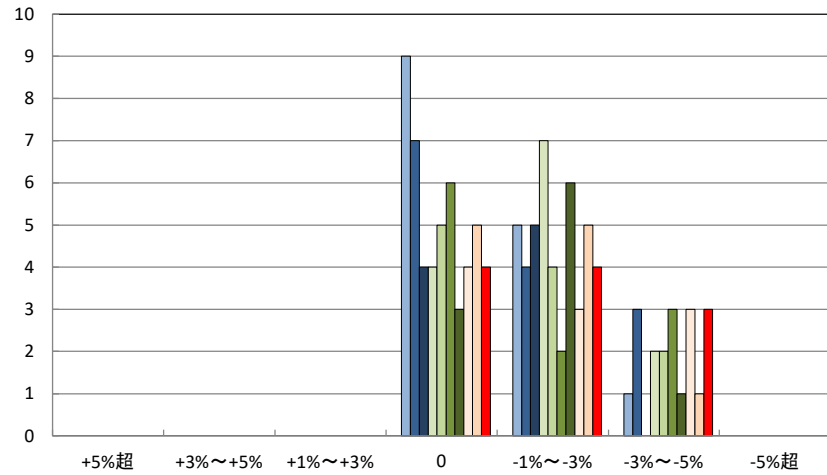


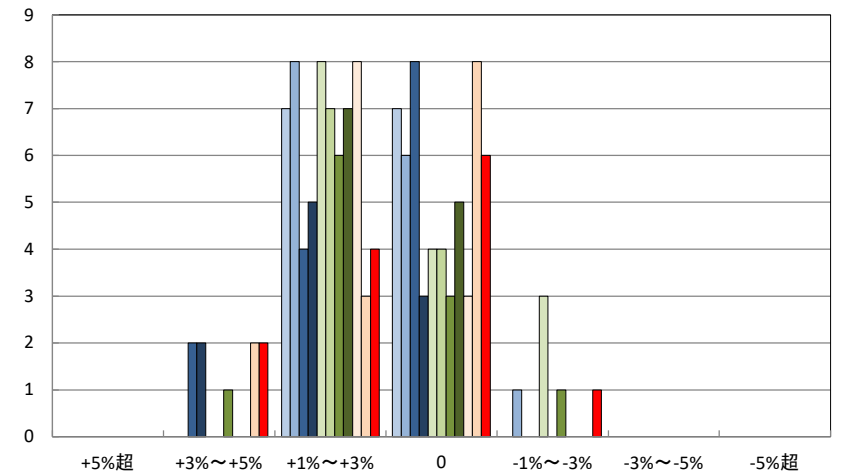
波方小学校区

H29.10 H30.10 R1.9 R2.9 R3.9 R4.4 R4.9 R5.3 R5.9 R6.3 R6.9



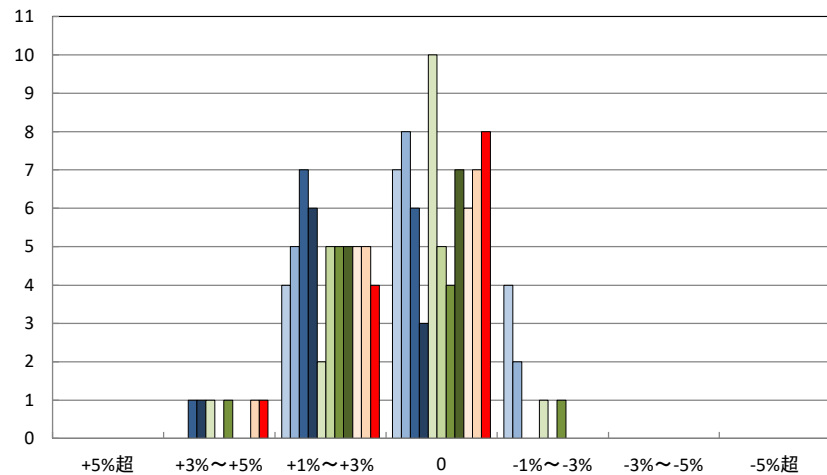
乃万小学校区

H29.10 H30.10 R1.9 R2.9 R3.9 R4.4 R4.9 R5.3 R5.9 R6.3 R6.9



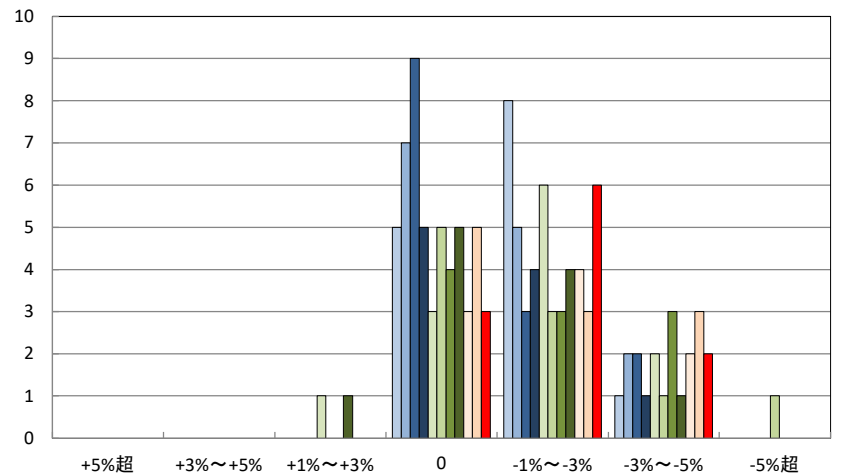
常盤小学校区

H29.10 H30.10 R1.9 R2.9 R3.9 R4.4 R4.9 R5.3 R5.9 R6.3 R6.9



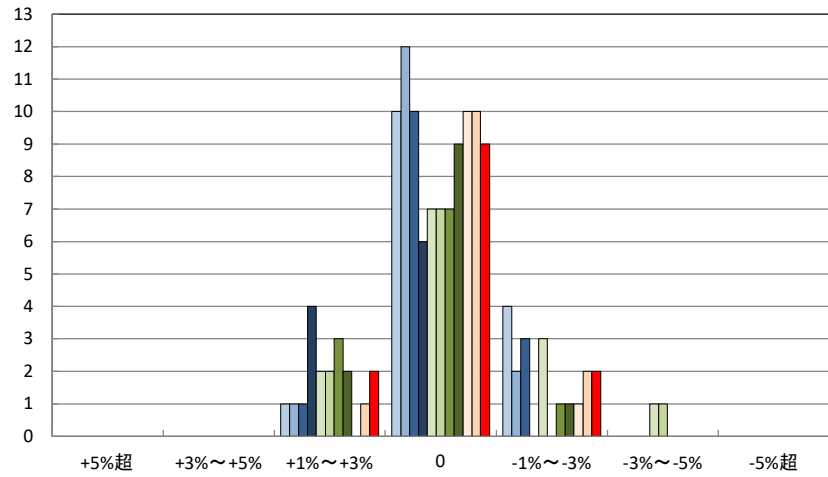
大西小学校区

H29.10 H30.10 R1.9 R2.9 R3.9 R4.4 R4.9 R5.3 R5.9 R6.3 R6.9



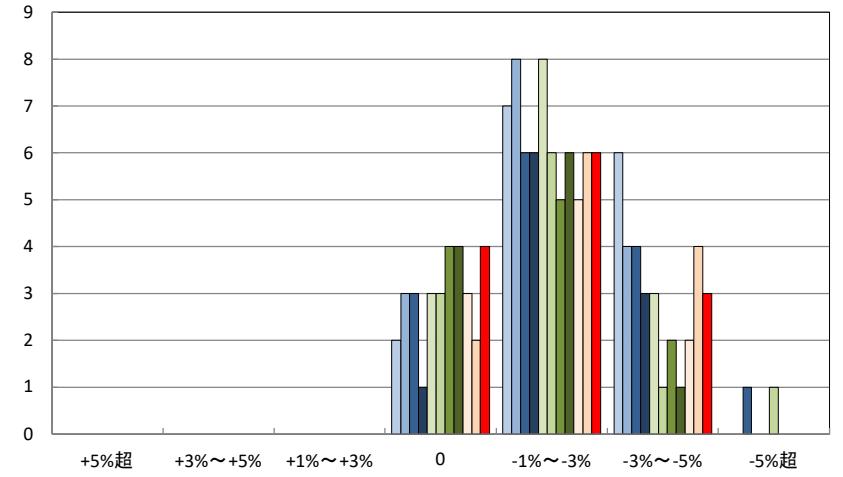
富田小学校区

□H29.10 □H30.10 ■R1.9 ■R2.9 □R3.9 □R4.4 ■R4.9 ■R5.3 □R5.9 □R6.3 ■R6.9



桜井小学校区

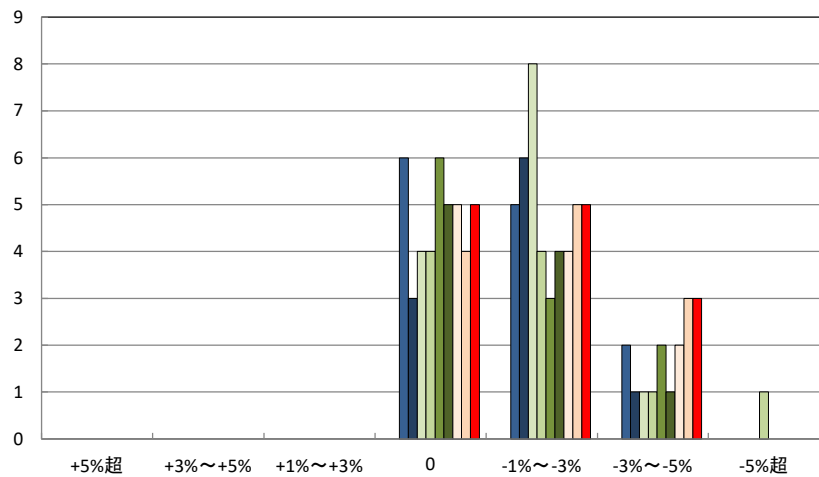
□H29.10 □H30.10 ■R1.9 ■R2.9 □R3.9 □R4.4 ■R4.9 ■R5.3 □R5.9 □R6.3 ■R6.9



※R1年から実施

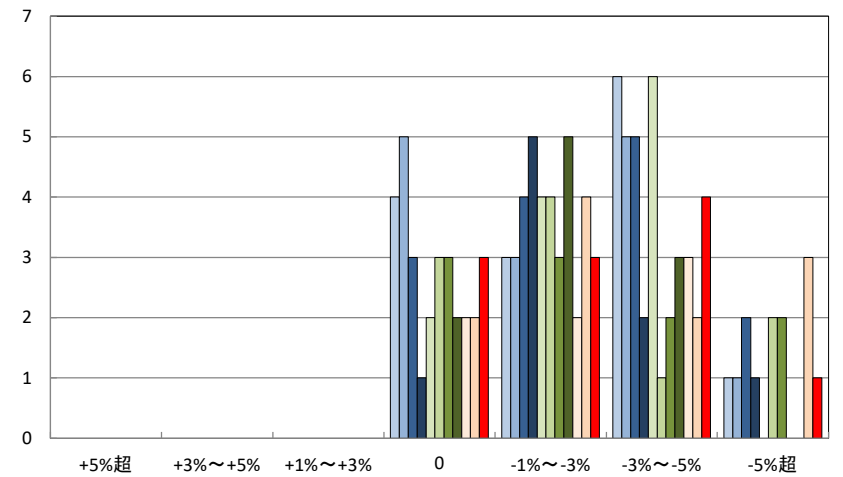
国分小学校区

□H29.10 □H30.10 ■R1.9 ■R2.9 □R3.9 □R4.4 ■R4.9 ■R5.3 □R5.9 □R6.3 ■R6.9



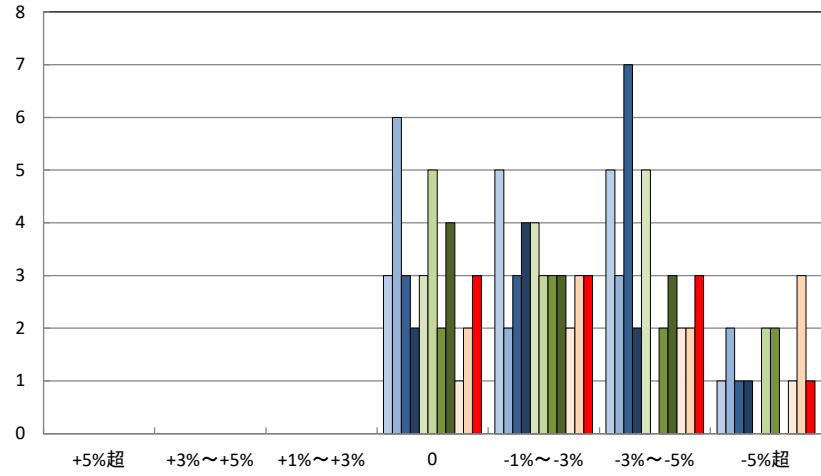
朝倉小学校区

□H29.10 □H30.10 ■R1.9 ■R2.9 □R3.9 □R4.4 ■R4.9 ■R5.3 □R5.9 □R6.3 ■R6.9



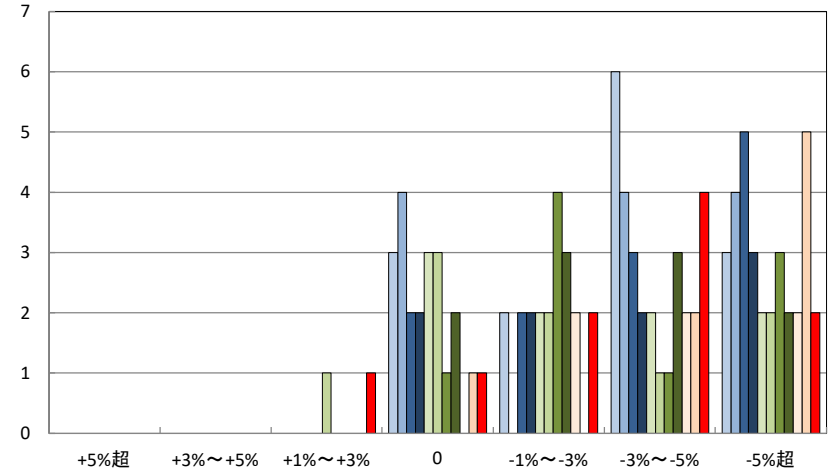
鴨部・九和小学校区

□H29.10 □H30.10 ■R1.9 ■R2.9 □R3.9 □R4.4 ■R4.9 ■R5.3 □R5.9 □R6.3 ■R6.9



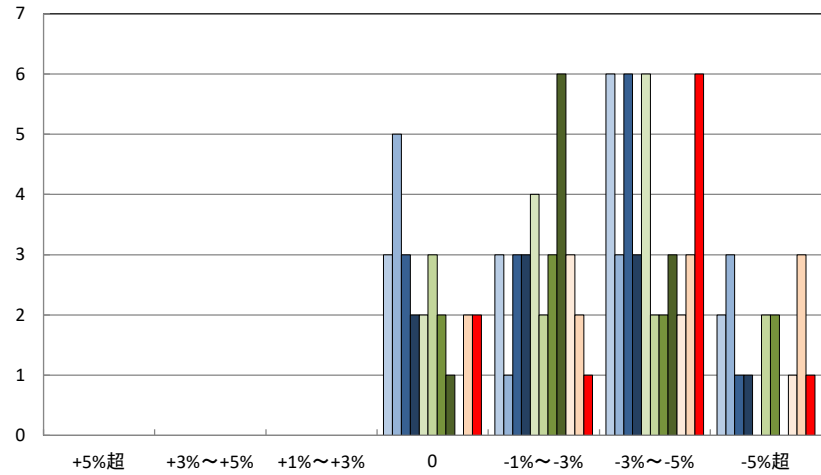
島しょ部地区

□H29.10 □H30.10 ■R1.9 ■R2.9 □R3.9 □R4.4 ■R4.9 ■R5.3 □R5.9 □R6.3 ■R6.9

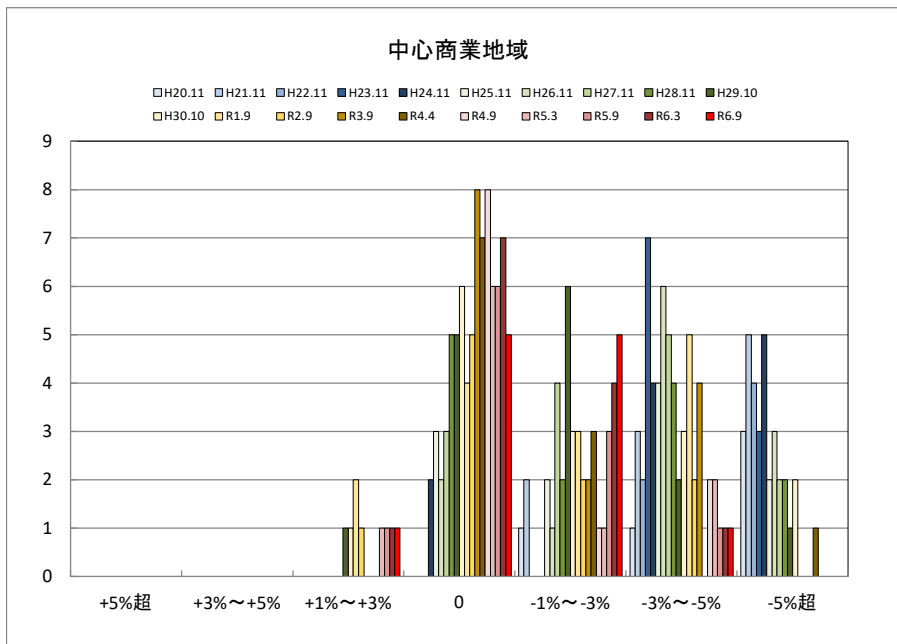


亀岡・菊間小学校区

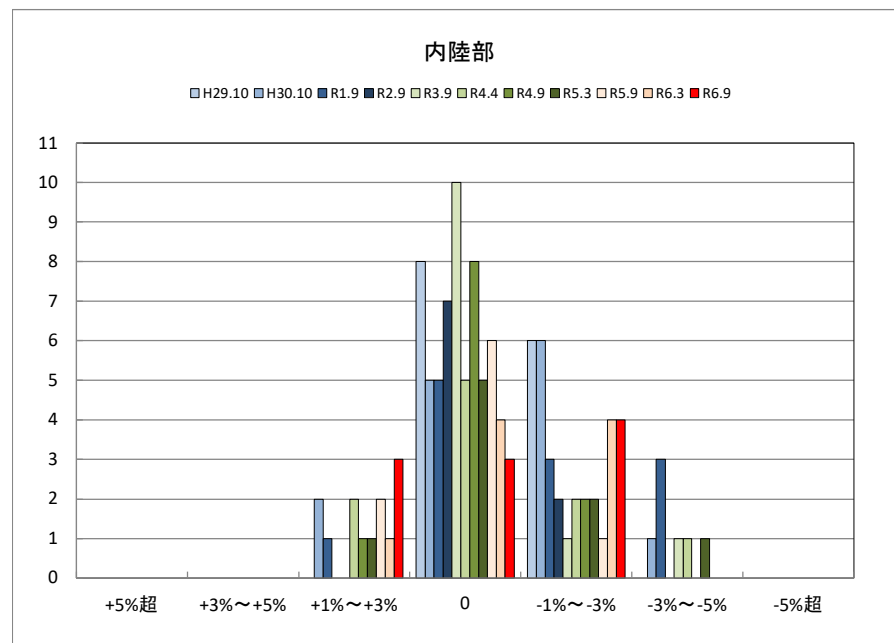
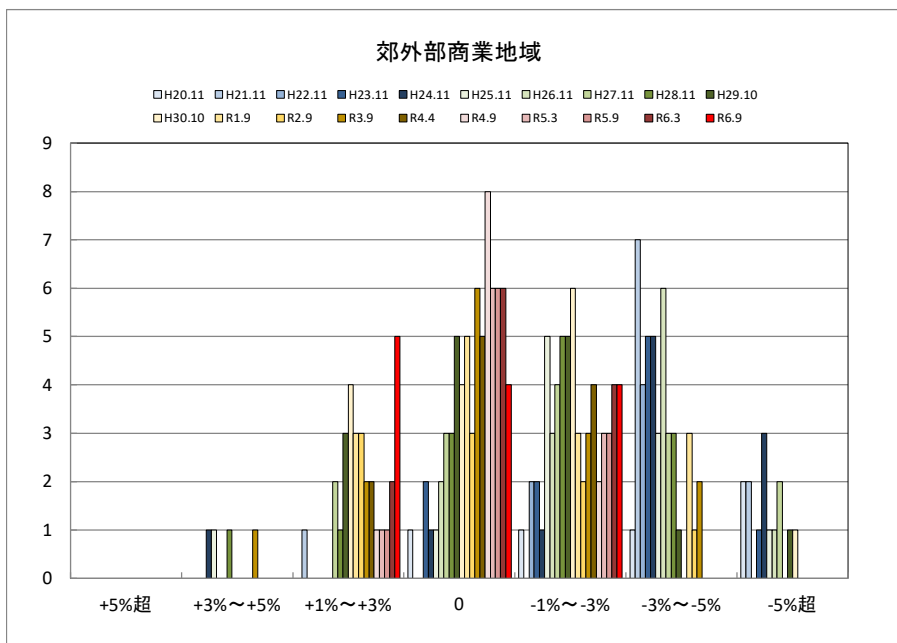
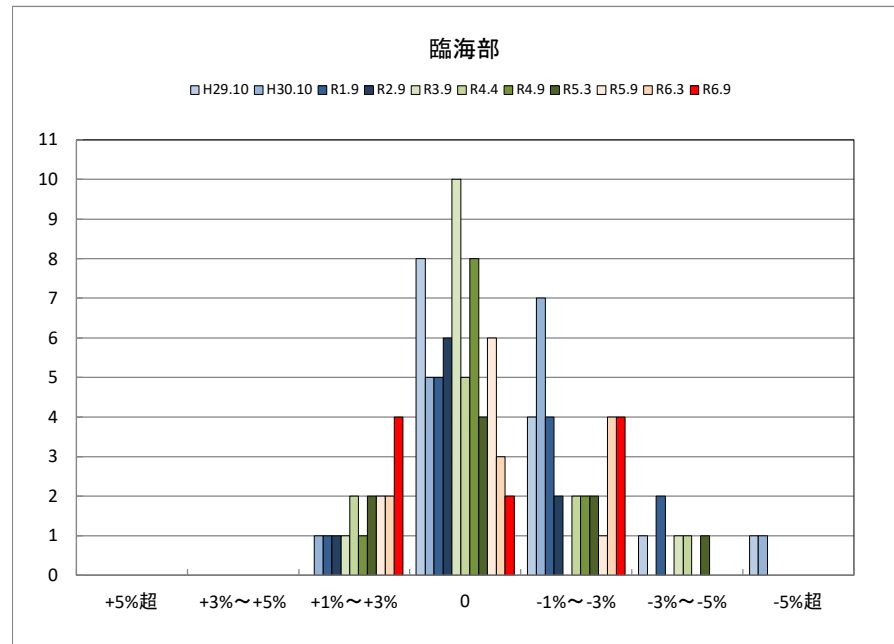
□H29.10 □H30.10 ■R1.9 ■R2.9 □R3.9 □R4.4 ■R4.9 ■R5.3 □R5.9 □R6.3 ■R6.9



○今治市商業地(地域別)の過去6ヶ月間の地価動向について

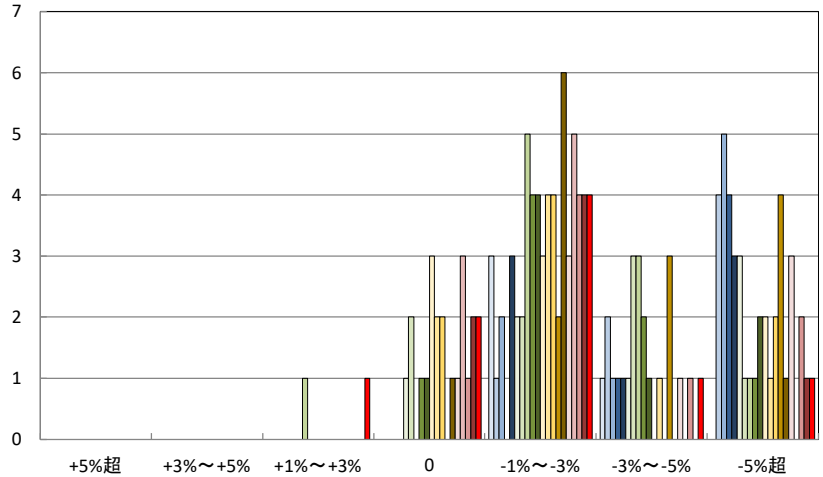


○今治市工業地(地域別)の過去6ヶ月間の地価動向について



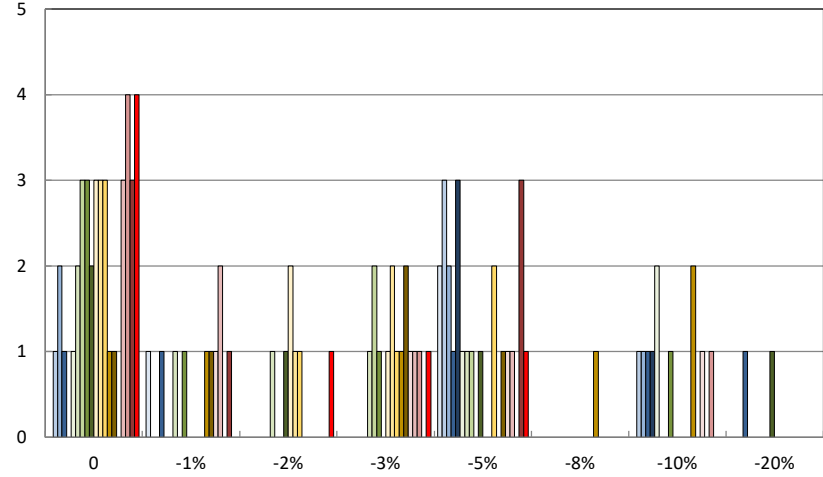
保田地区

□ H20.11 □ H21.11 □ H22.11 □ H23.11 □ H24.11 □ H25.11 □ H26.11 □ H27.11 □ H28.11 □ H29.10
 □ H30.10 □ R1.9 □ R2.9 □ R3.9 □ R4.4 □ R4.9 □ R5.3 □ R5.9 □ R6.3 □ R6.9



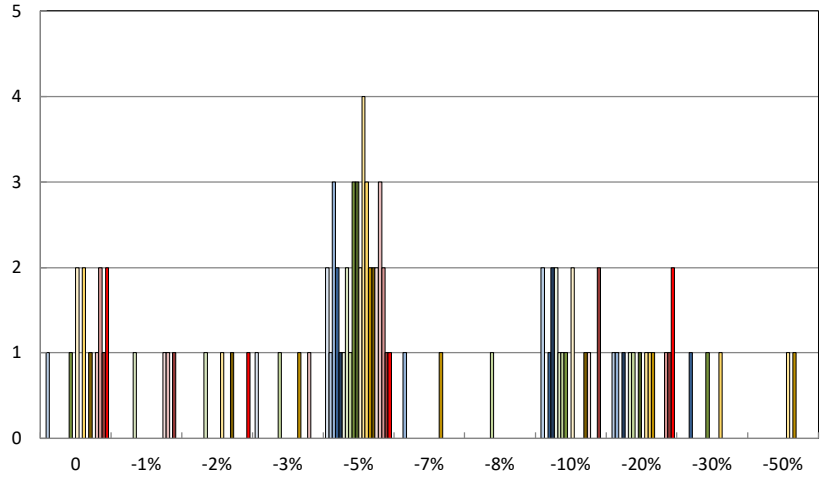
旧三間町中心部

□ H20.11 □ H21.11 □ H22.11 □ H23.11 □ H24.11 □ H25.11 □ H26.11 □ H27.11 □ H28.11 □ H29.10
 □ H30.10 □ R1.9 □ R2.9 □ R3.9 □ R4.4 □ R4.9 □ R5.3 □ R5.9 □ R6.3 □ R6.9



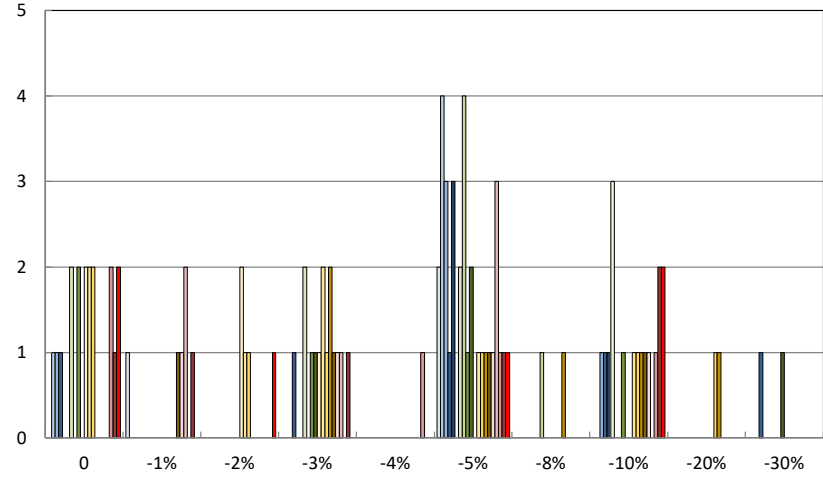
旧吉田町中心部

□ H20.11 □ H21.11 □ H22.11 □ H23.11 □ H24.11 □ H25.11 □ H26.11 □ H27.11 □ H28.11 □ H29.10
 □ H30.10 □ R1.9 □ R2.9 □ R3.9 □ R4.4 □ R4.9 □ R5.3 □ R5.9 □ R6.3 □ R6.9



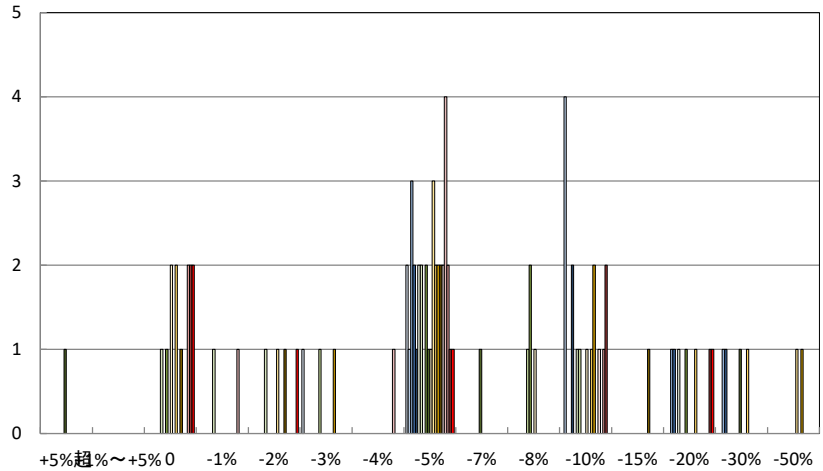
旧津島町中心部

□ H20.11 □ H21.11 □ H22.11 □ H23.11 □ H24.11 □ H25.11 □ H26.11 □ H27.11 □ H28.11 □ H29.10
 □ H30.10 □ R1.9 □ R2.9 □ R3.9 □ R4.4 □ R4.9 □ R5.3 □ R5.9 □ R6.3 □ R6.9



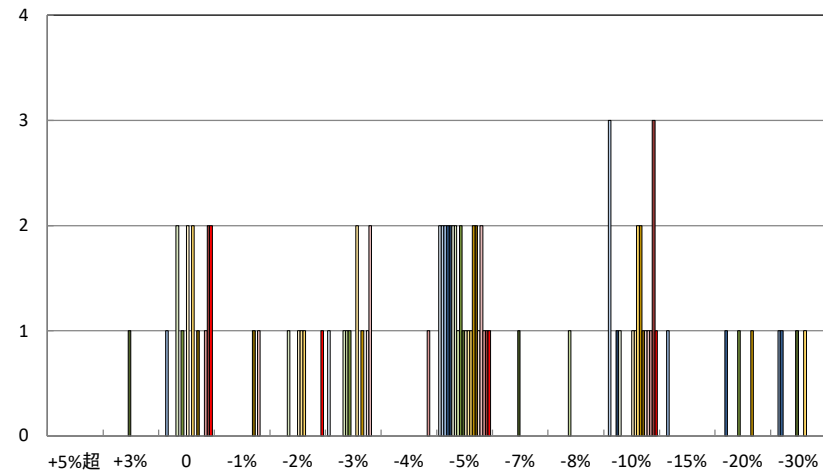
旧吉田町中心部商業地

□H20.11 □H21.11 □H22.11 □H23.11 □H24.11 □H25.11 □H26.11 □H27.11 □H28.11 □H29.10
 □H30.10 □R1.9 □R2.9 □R3.9 □R4.4 □R4.9 □R5.3 □R5.9 □R6.3 □R6.9



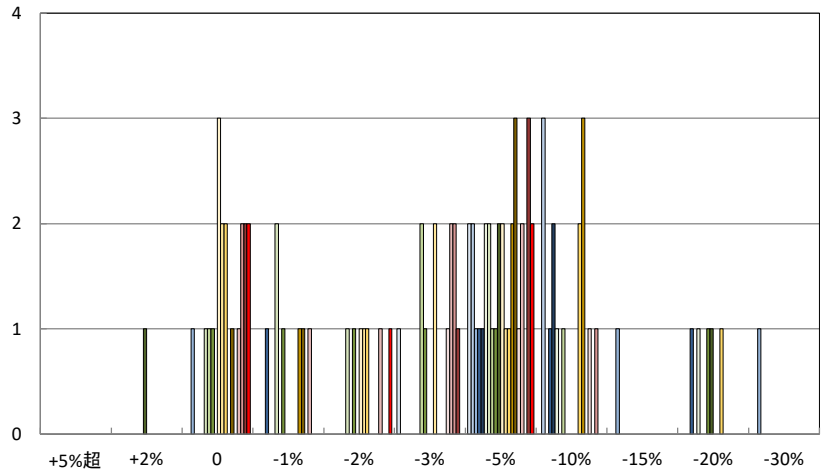
旧津島町中心部商業地

□H20.11 □H21.11 □H22.11 □H23.11 □H24.11 □H25.11 □H26.11 □H27.11 □H28.11 □H29.10
 □H30.10 □R1.9 □R2.9 □R3.9 □R4.4 □R4.9 □R5.3 □R5.9 □R6.3 □R6.9



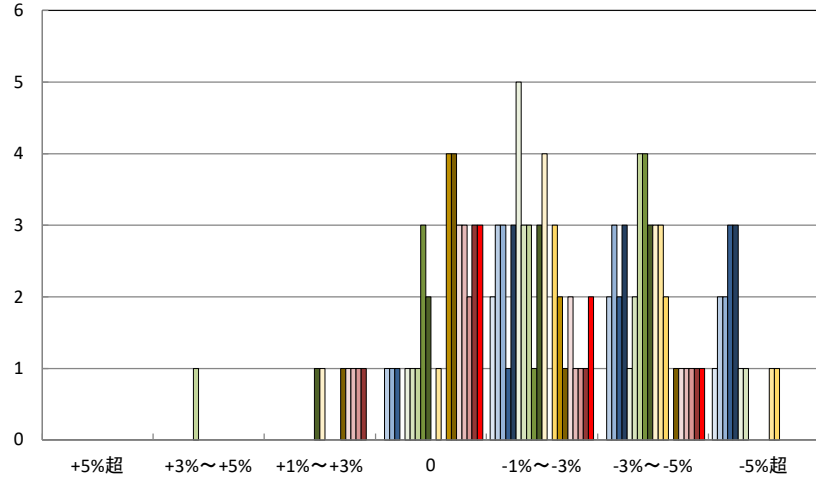
旧三間町中心部商業地

□H20.11 □H21.11 □H22.11 □H23.11 □H24.11 □H25.11 □H26.11 □H27.11 □H28.11 □H29.10
 □H30.10 □R1.9 □R2.9 □R3.9 □R4.4 □R4.9 □R5.3 □R5.9 □R6.3 □R6.9



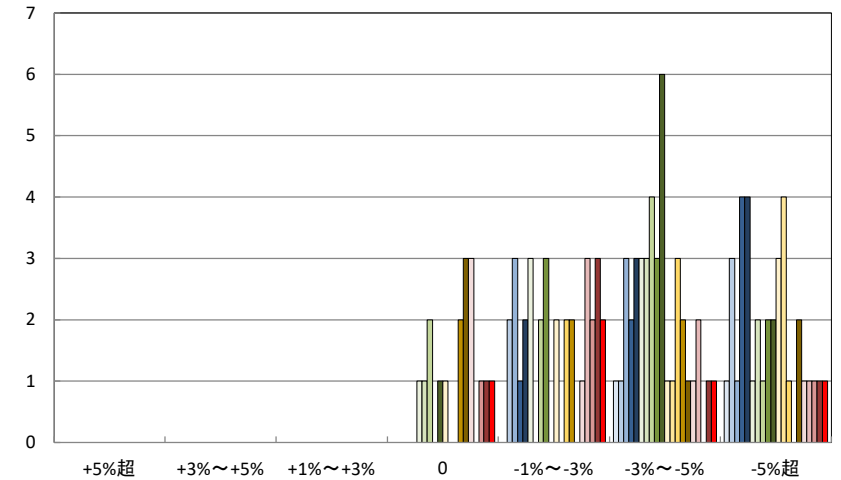
八代地区

H20.11 H21.11 H22.11 H23.11 H24.11 H25.11 H26.11 H27.11 H28.11 H29.10
H30.10 R1.9 R2.9 R3.9 R4.4 R4.9 R5.3 R5.9 R6.3 R6.9



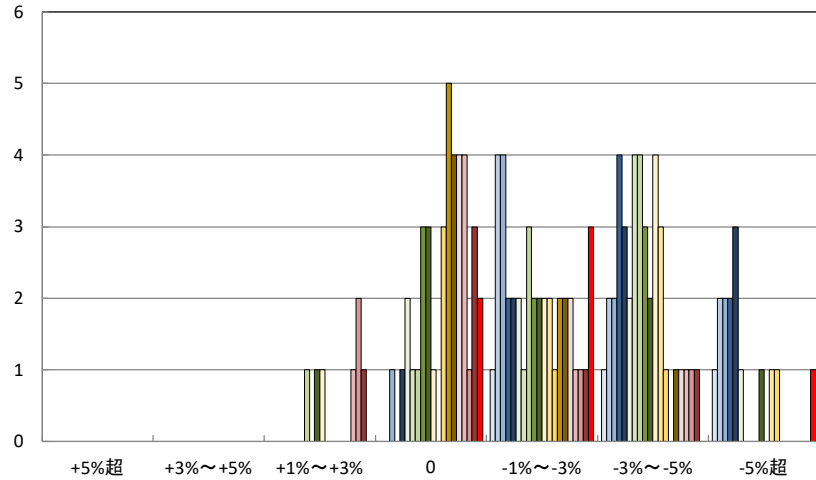
舌間・合田地区

H20.11 H21.11 H22.11 H23.11 H24.11 H25.11 H26.11 H27.11 H28.11 H29.10
H30.10 R1.9 R2.9 R3.9 R4.4 R4.9 R5.3 R5.9 R6.3 R6.9



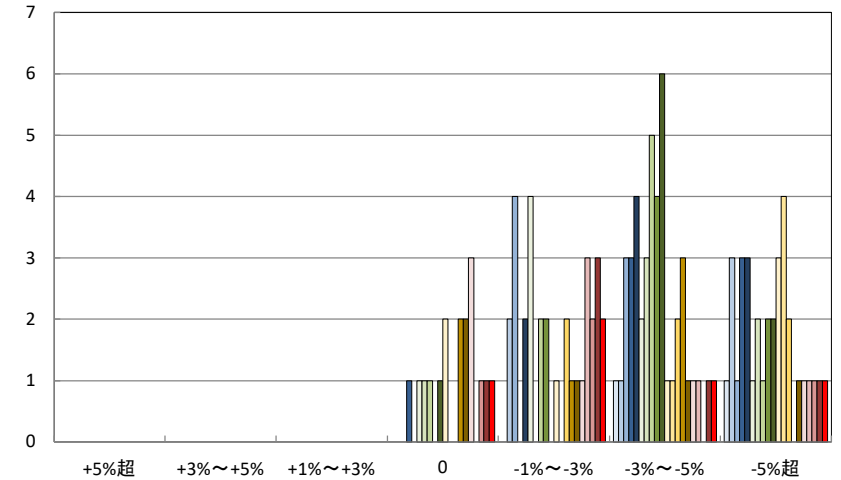
五反田地区

H20.11 H21.11 H22.11 H23.11 H24.11 H25.11 H26.11 H27.11 H28.11 H29.10
H30.10 R1.9 R2.9 R3.9 R4.4 R4.9 R5.3 R5.9 R6.3 R6.9



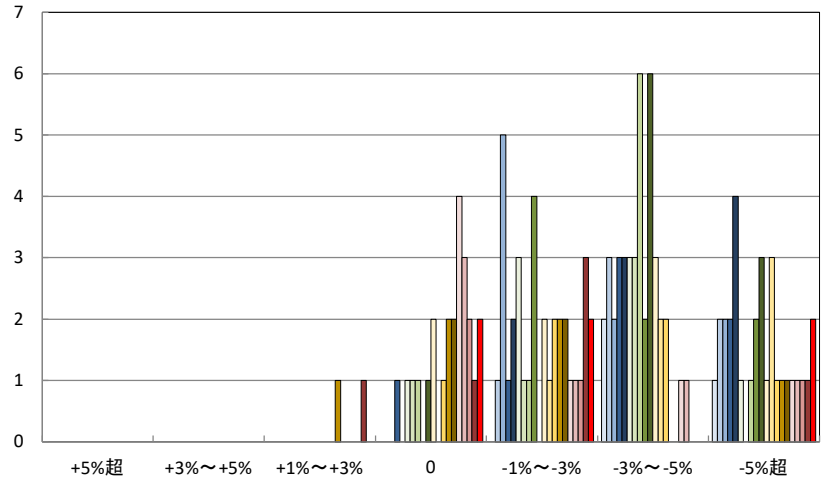
川名津・真網代地区

H20.11 H21.11 H22.11 H23.11 H24.11 H25.11 H26.11 H27.11 H28.11 H29.10
H30.10 R1.9 R2.9 R3.9 R4.4 R4.9 R5.3 R5.9 R6.3 R6.9

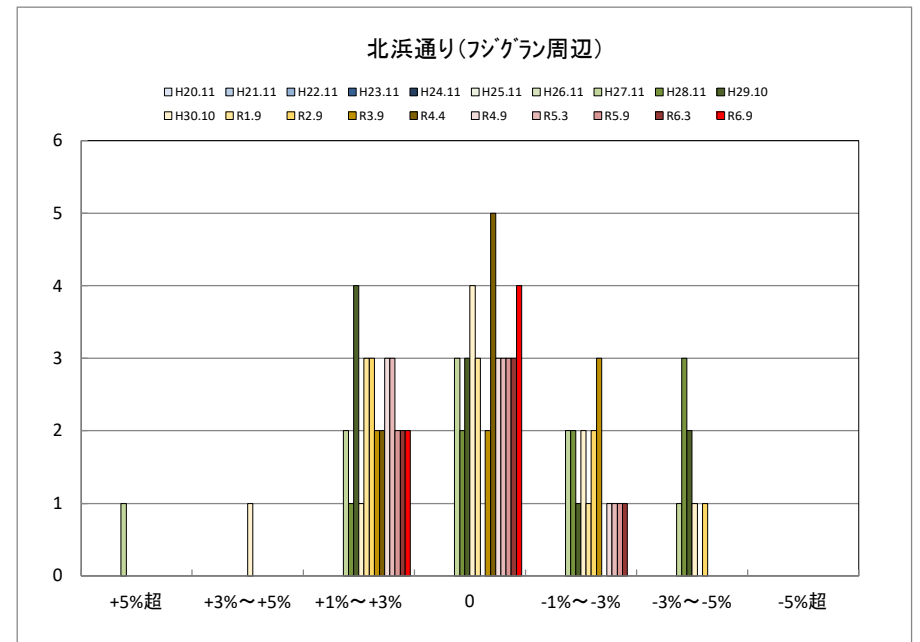
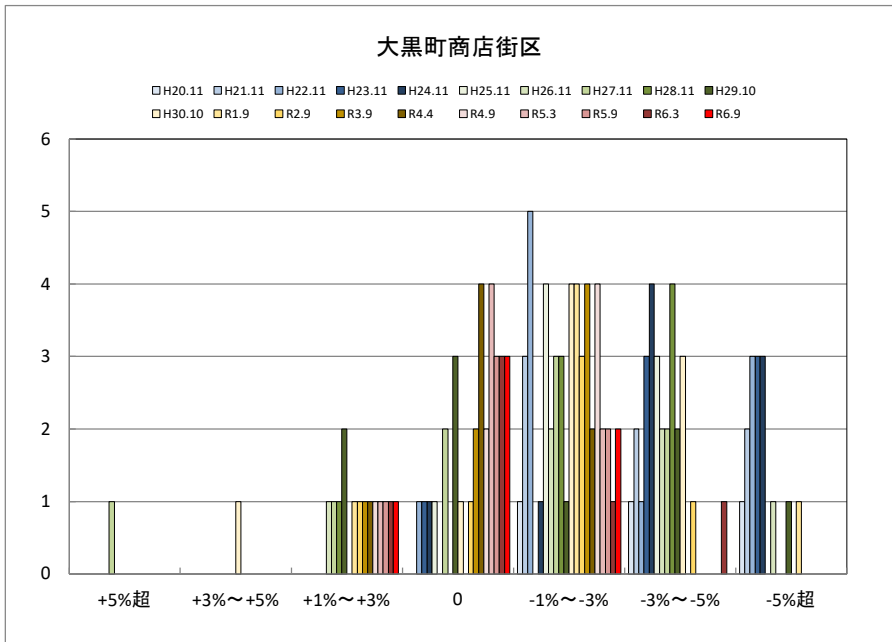
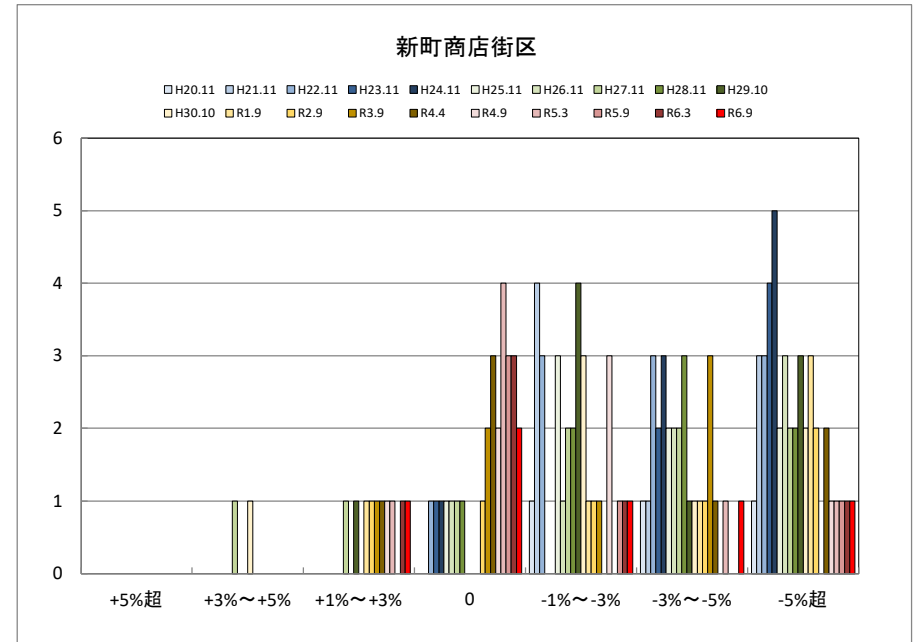
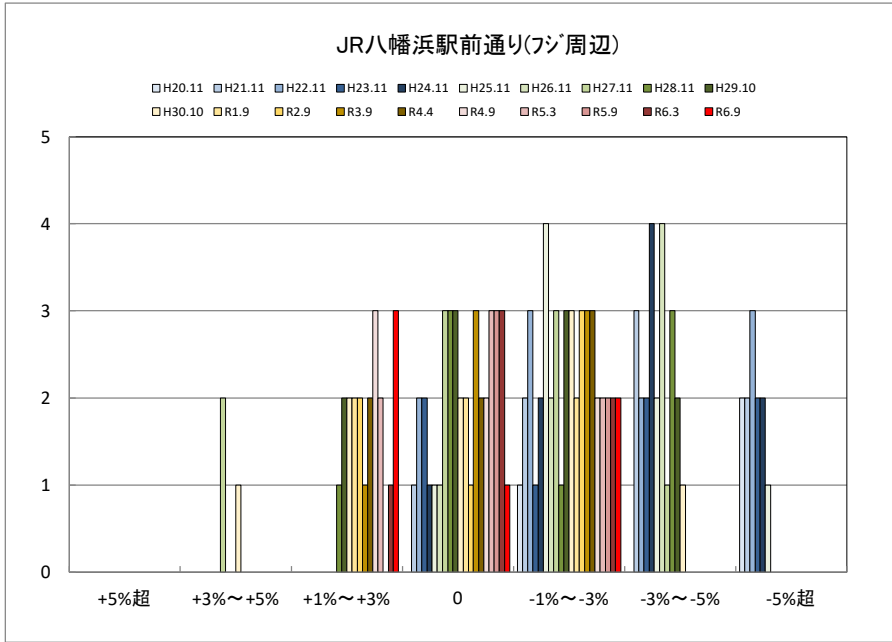


保内町集落部

□ H20.11 □ H21.11 □ H22.11 □ H23.11 □ H24.11 □ H25.11 □ H26.11 □ H27.11 □ H28.11 □ H29.10
 □ H30.10 □ R1.9 □ R2.9 □ R3.9 □ R4.4 □ R4.9 □ R5.3 □ R5.9 □ R6.3 □ R6.9

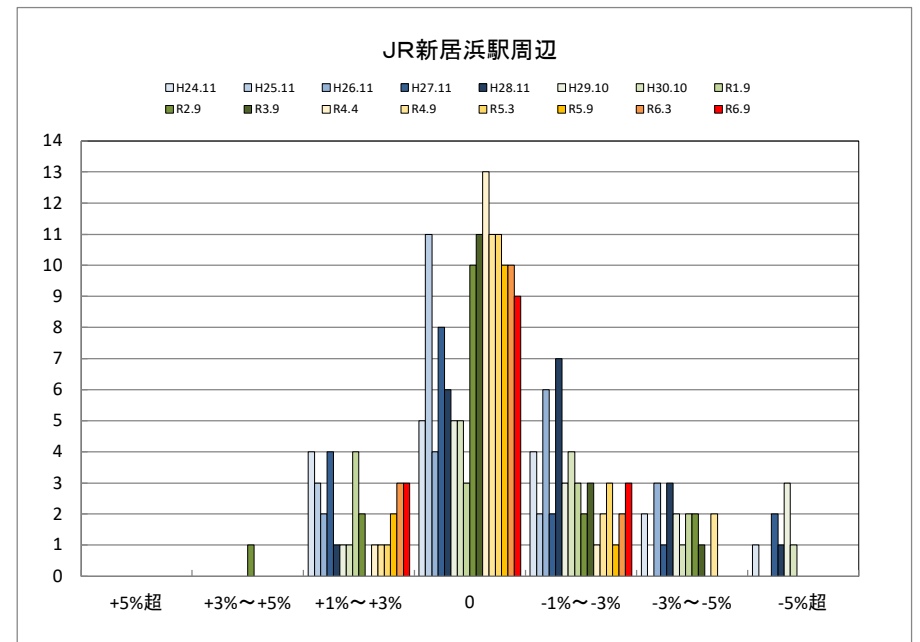
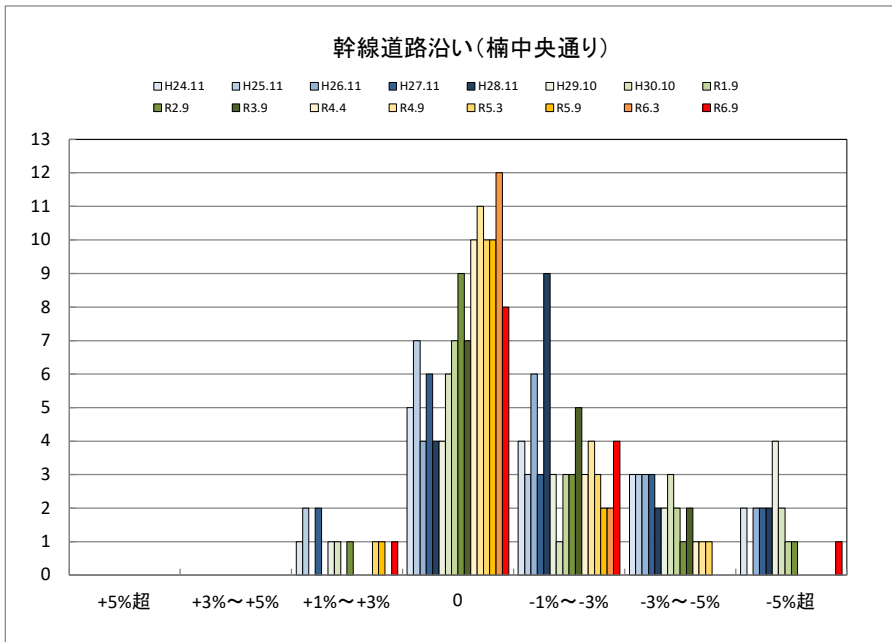
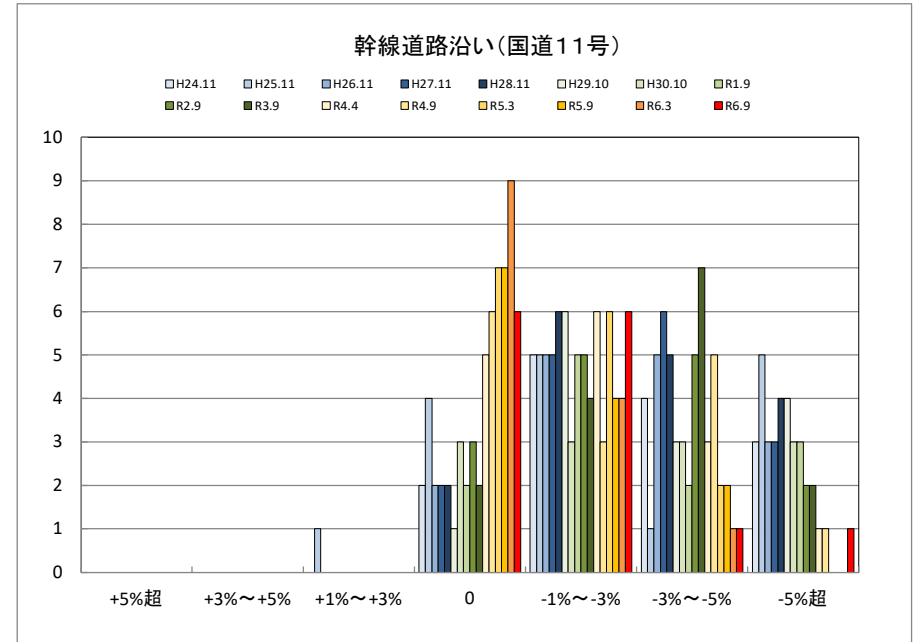
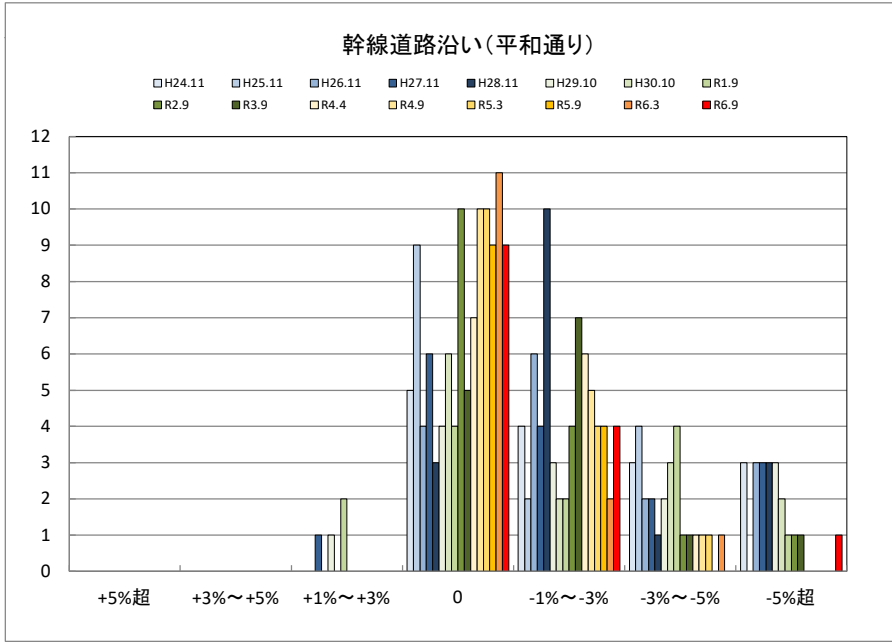


○八幡浜市商業地(地域別)の過去6ヶ月間の地価動向について



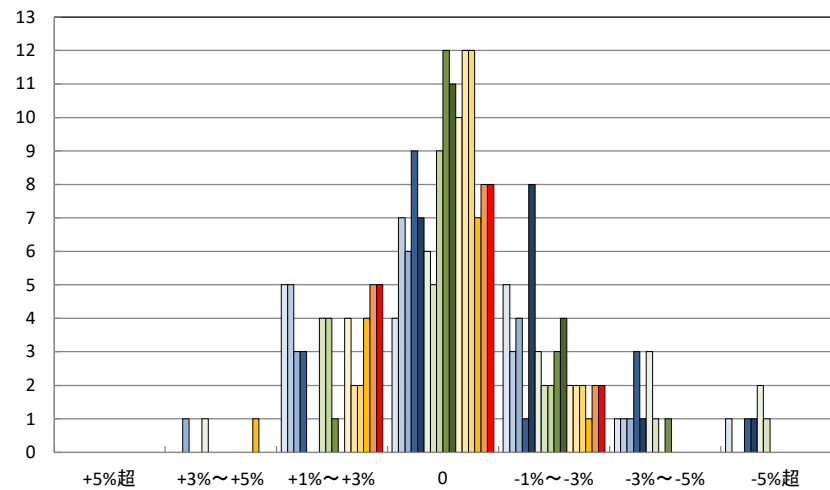
※ H27年から実施

○新居浜市商業地(地域別)の過去6ヶ月間の地価動向について



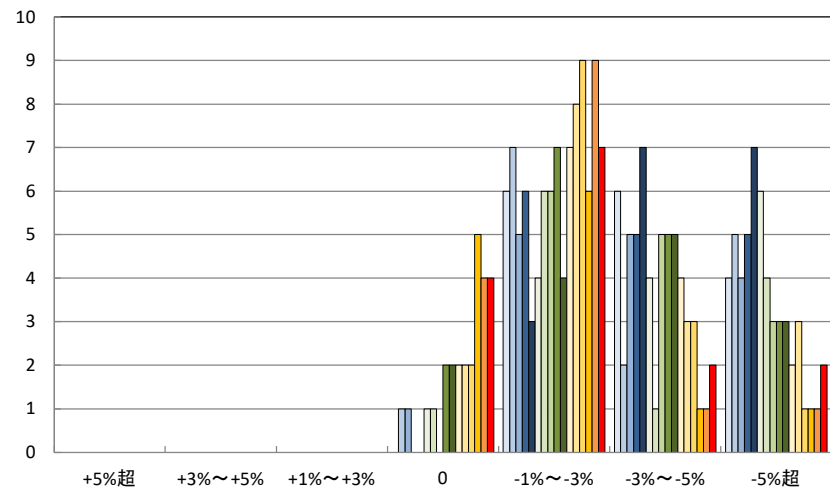
イオンモール新居浜周辺

□H24.11 □H25.11 □H26.11 □H27.11 □H28.11 □H29.10 □H30.10 □R1.9
 ■R2.9 ■R3.9 □R4.4 □R4.9 □R5.3 □R5.9 □R6.3 ■R6.9



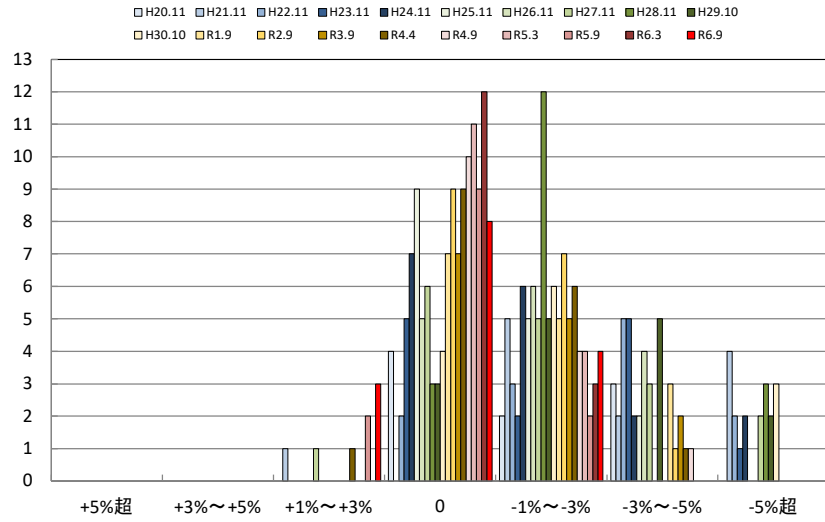
昭和通り・登り道商店街

□H24.11 □H25.11 □H26.11 □H27.11 □H28.11 □H29.10 □H30.10 □R1.9
 ■R2.9 ■R3.9 □R4.4 □R4.9 □R5.3 □R5.9 □R6.3 ■R6.9

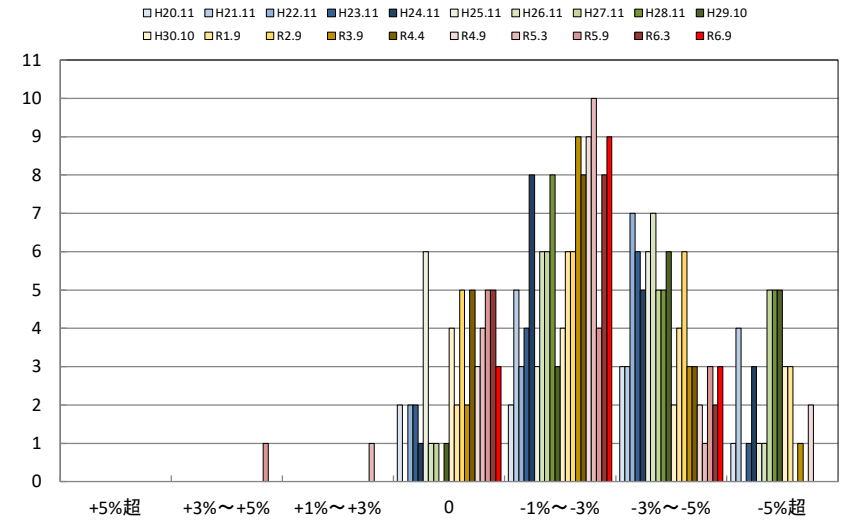


○新居浜市住宅地(地域別)の過去6ヶ月間の地価動向について

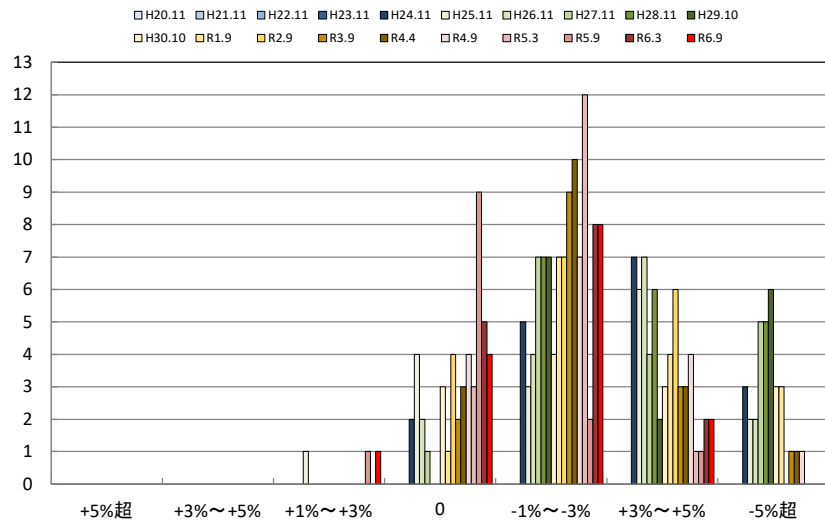
中心部住宅地域(全般)



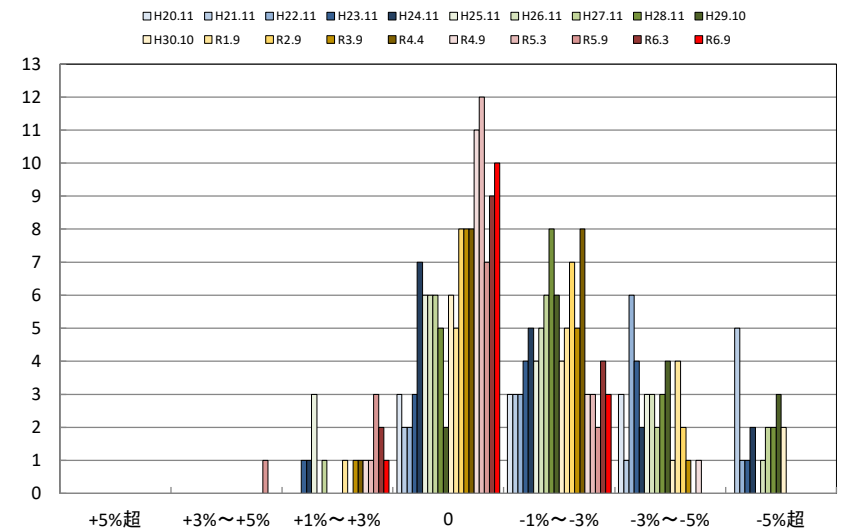
川東地区



郊外部住宅地域(全般)

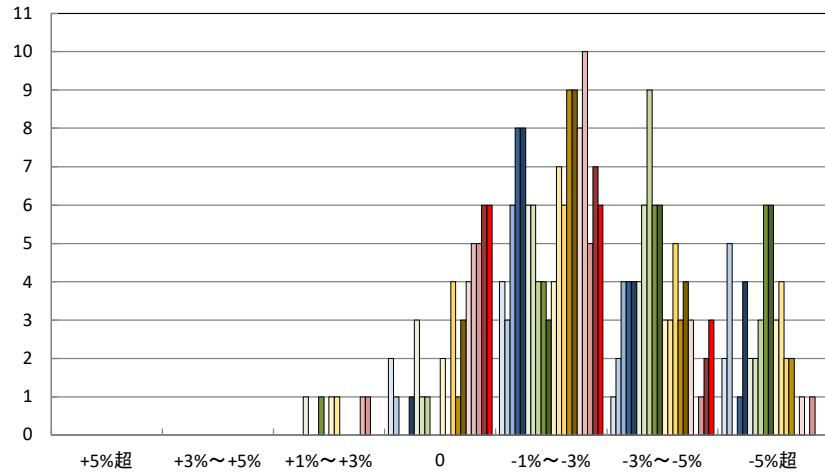


川西地区

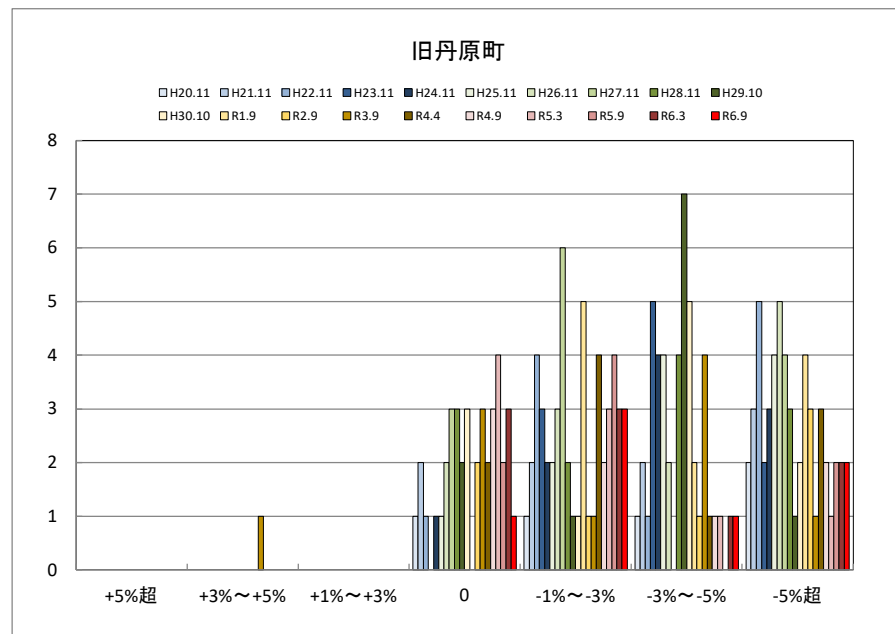
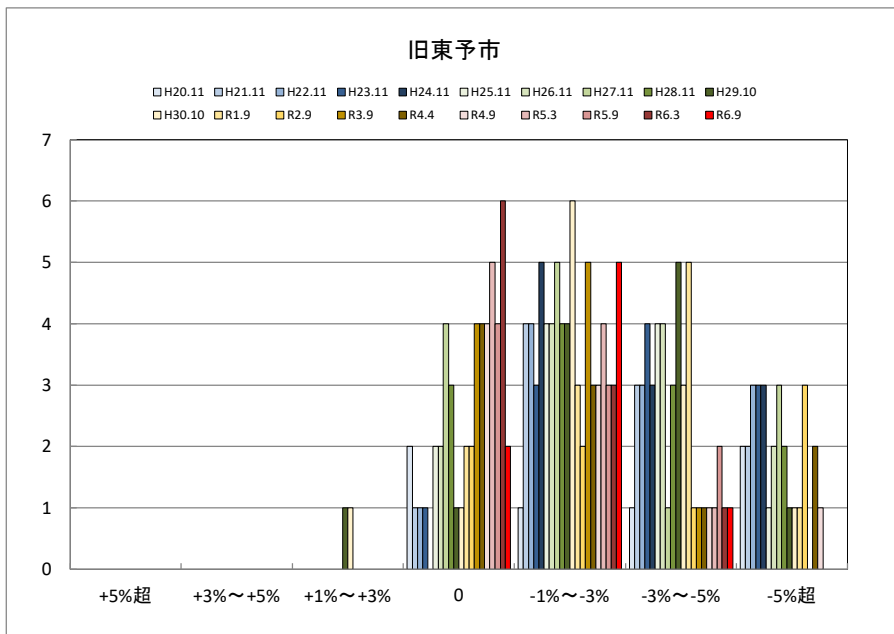
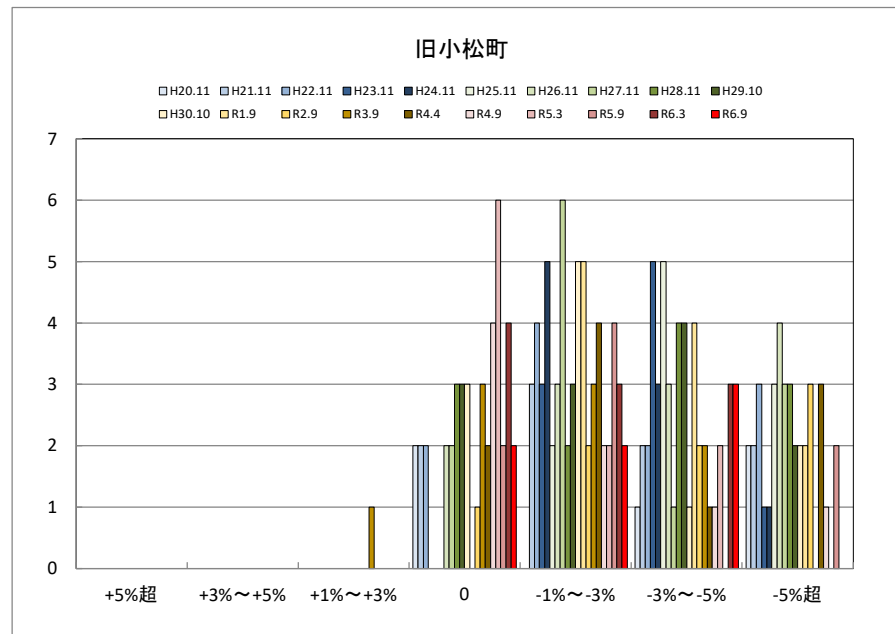
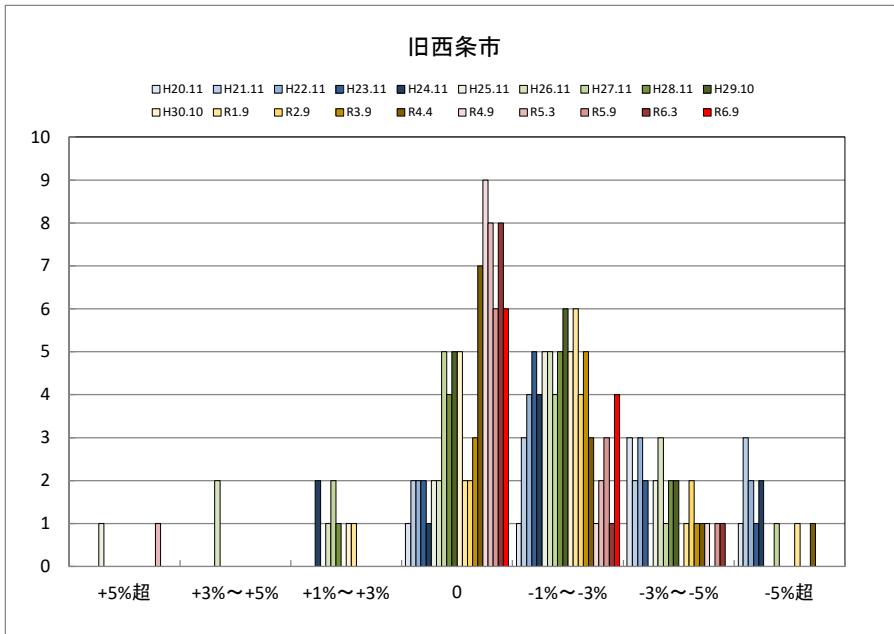


上部地区

□ H20.11 □ H21.11 □ H22.11 □ H23.11 □ H24.11 □ H25.11 □ H26.11 □ H27.11 □ H28.11 □ H29.10
 □ H30.10 □ R1.9 □ R2.9 □ R3.9 □ R4.4 □ R4.9 □ R5.3 □ R5.9 □ R6.3 □ R6.9

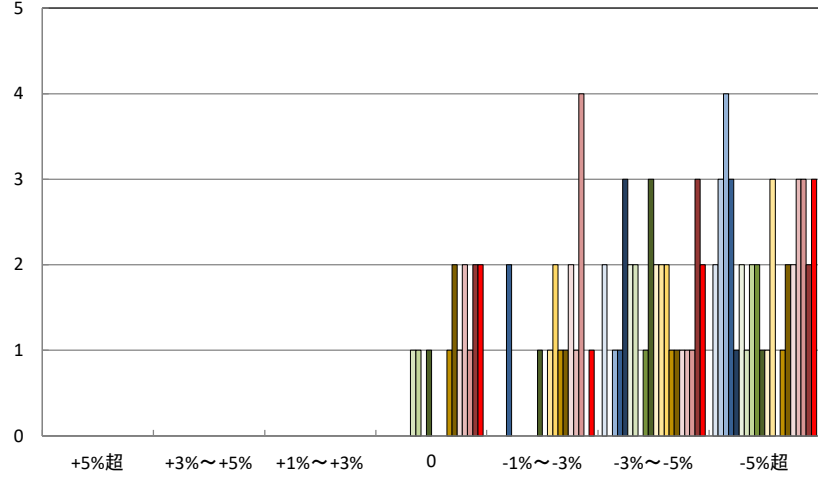


○西条市住宅地(地域別)の過去6ヶ月間の地価動向について



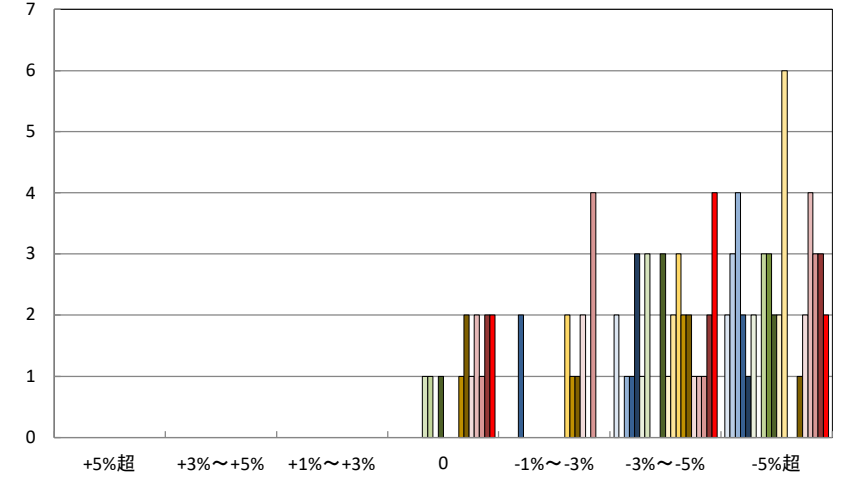
平野町地区

H20.11 H21.11 H22.11 H23.11 H24.11 H25.11 H26.11 H27.11 H28.11 H29.10
 H30.10 R1.9 R2.9 R3.9 R4.4 R4.9 R5.3 R5.9 R6.3 R6.9



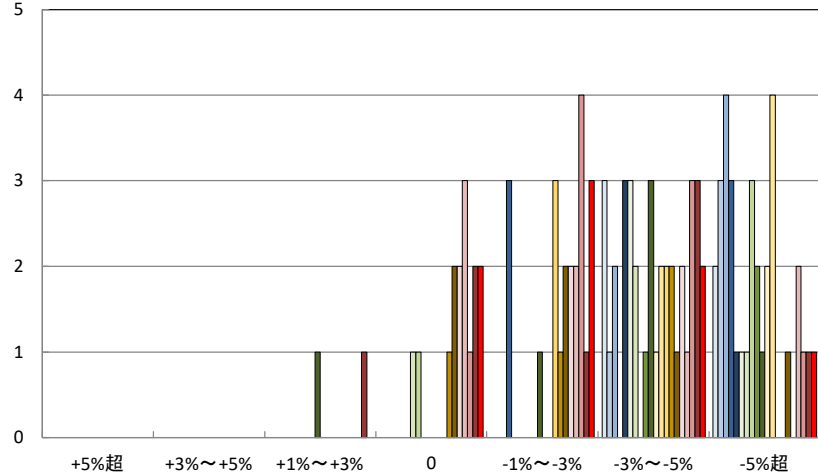
春賀・八多喜地区

H20.11 H21.11 H22.11 H23.11 H24.11 H25.11 H26.11 H27.11 H28.11 H29.10
 H30.10 R1.9 R2.9 R3.9 R4.4 R4.9 R5.3 R5.9 R6.3 R6.9



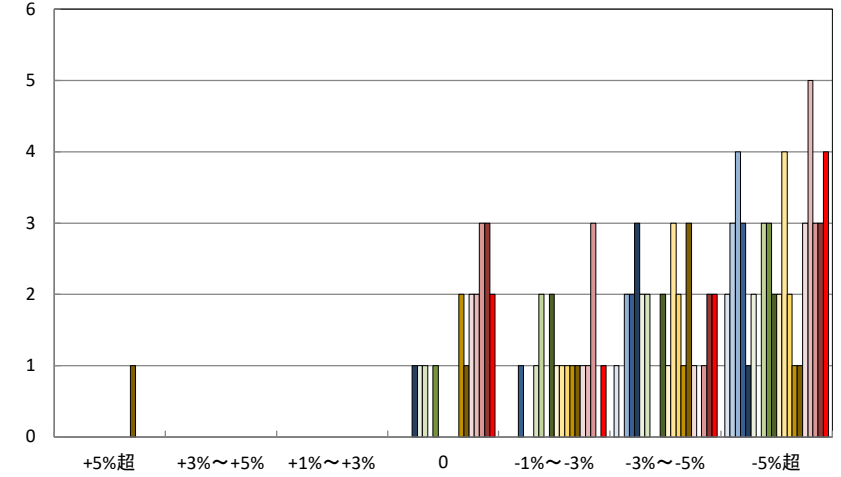
新谷・菅田町地区

H20.11 H21.11 H22.11 H23.11 H24.11 H25.11 H26.11 H27.11 H28.11 H29.10
 H30.10 R1.9 R2.9 R3.9 R4.4 R4.9 R5.3 R5.9 R6.3 R6.9



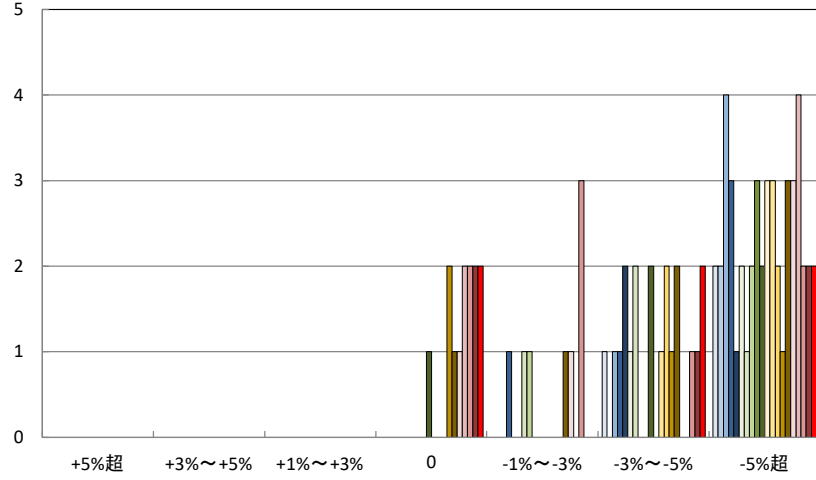
長浜町・白滝地区

H20.11 H21.11 H22.11 H23.11 H24.11 H25.11 H26.11 H27.11 H28.11 H29.10
 H30.10 R1.9 R2.9 R3.9 R4.4 R4.9 R5.3 R5.9 R6.3 R6.9



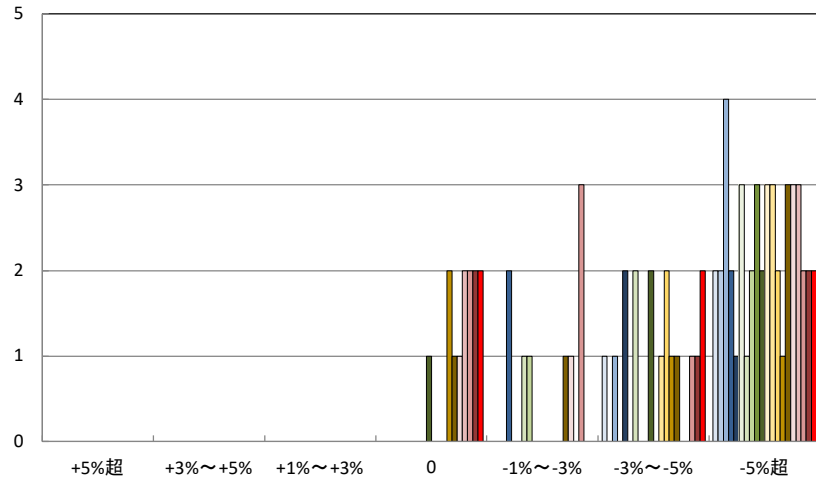
肱川町地区

□ H20.11 □ H21.11 □ H22.11 □ H23.11 □ H24.11 □ H25.11 □ H26.11 □ H27.11 □ H28.11 □ H29.10
□ H30.10 □ R1.9 □ R2.9 □ R3.9 □ R4.4 □ R4.9 □ R5.3 □ R5.9 □ R6.3 □ R6.9

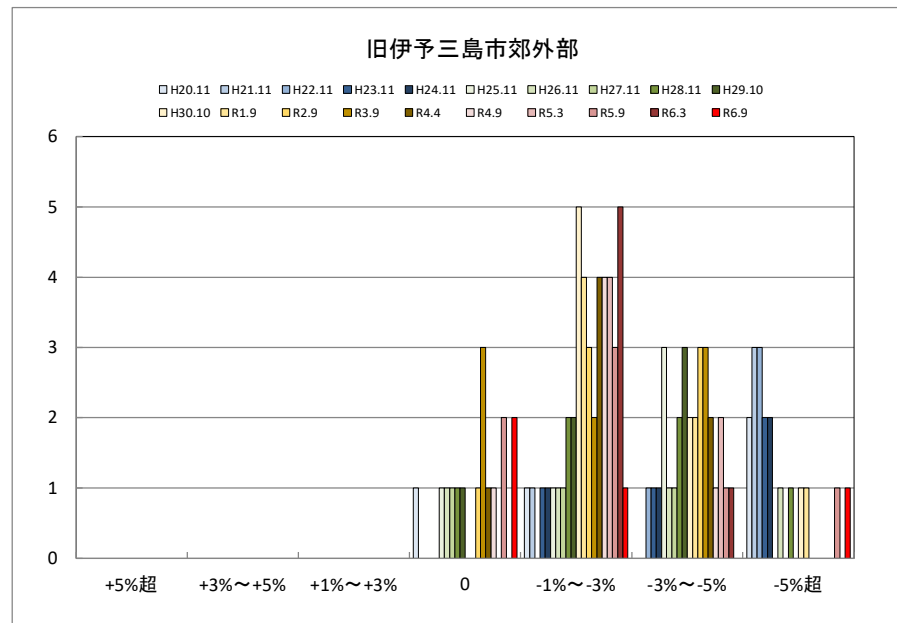
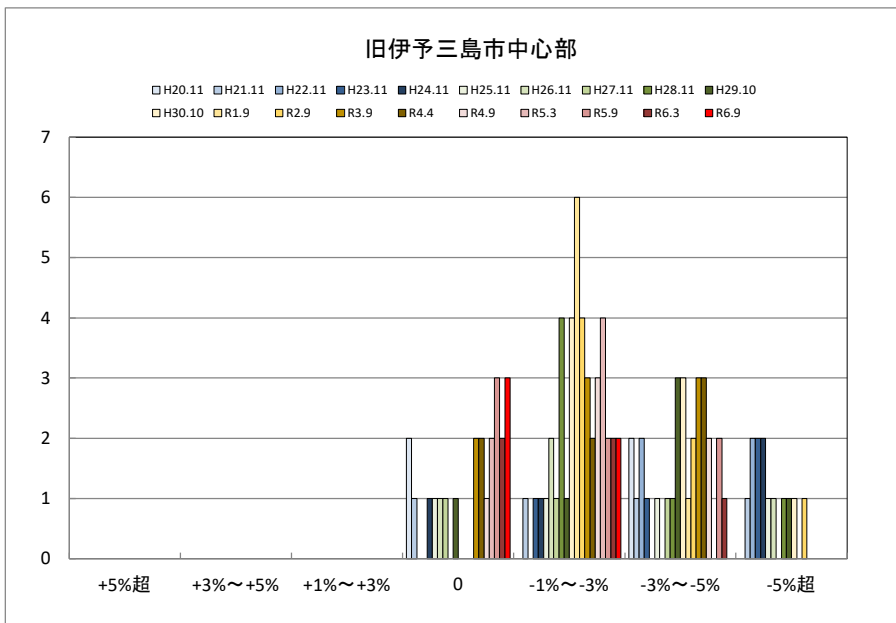
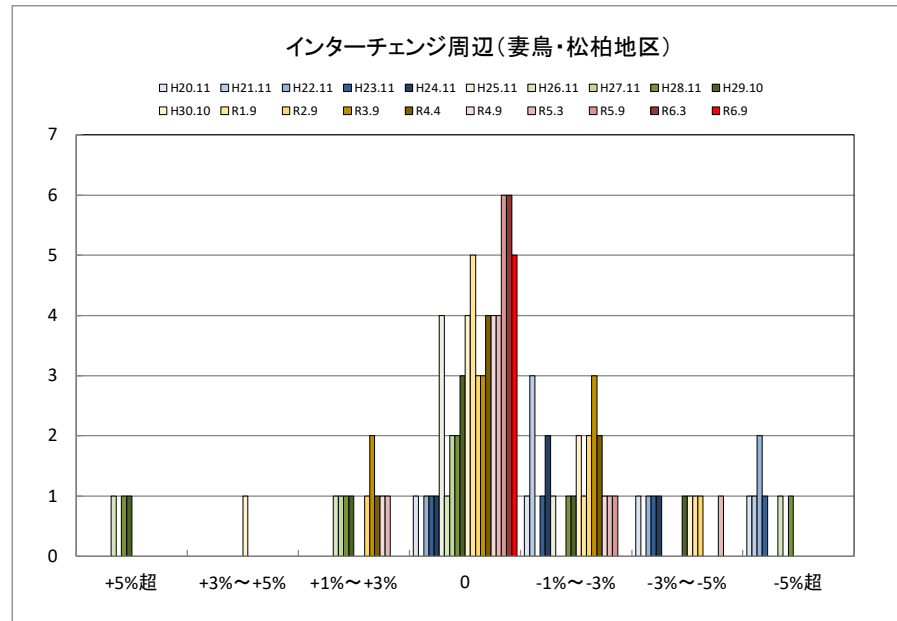
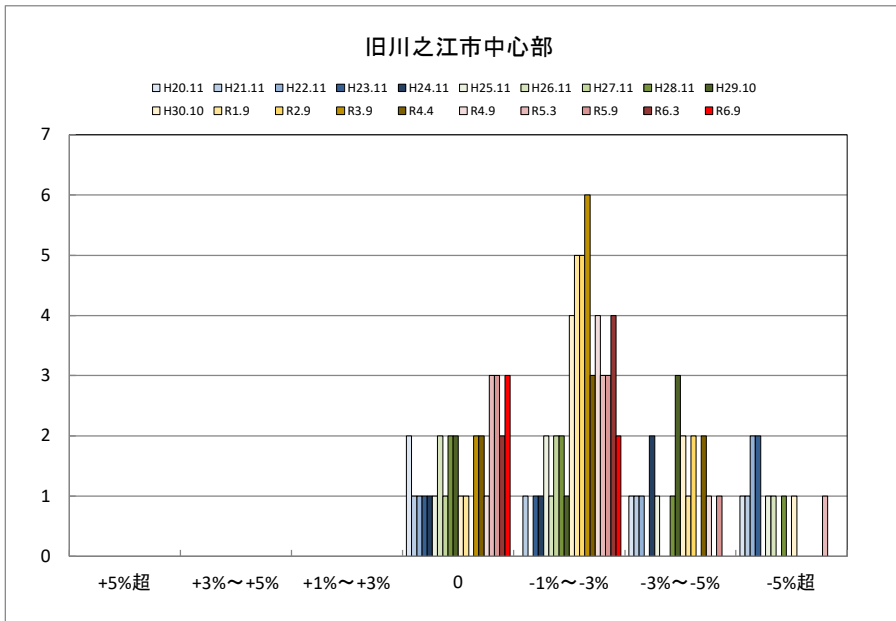


河边町地区

□ H20.11 □ H21.11 □ H22.11 □ H23.11 □ H24.11 □ H25.11 □ H26.11 □ H27.11 □ H28.11 □ H29.10
□ H30.10 □ R1.9 □ R2.9 □ R3.9 □ R4.4 □ R4.9 □ R5.3 □ R5.9 □ R6.3 □ R6.9

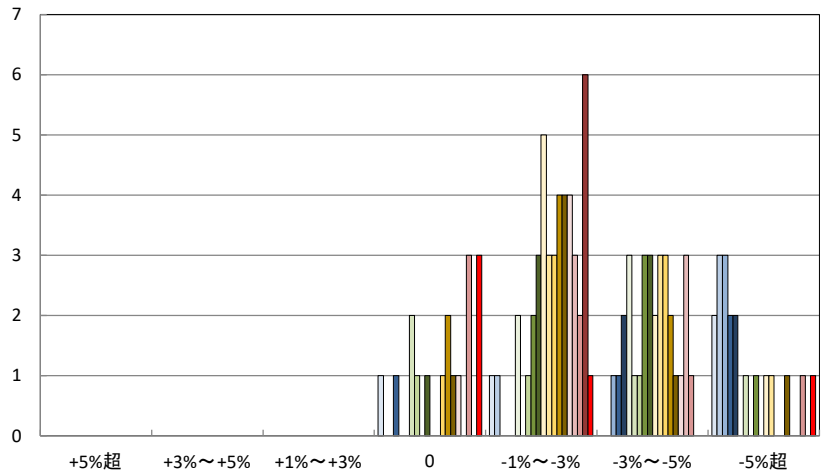


○四国中央市住宅地(地域別)の過去6ヶ月間の地価動向について



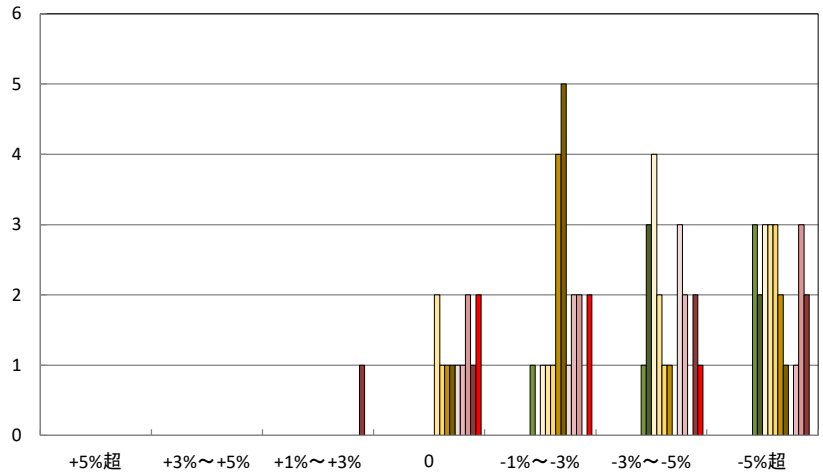
旧川之江市郊外部

□H20.11 □H21.11 □H22.11 □H23.11 □H24.11 □H25.11 □H26.11 □H27.11 □H28.11 □H29.10
 □H30.10 □R1.9 □R2.9 □R3.9 □R4.4 □R4.9 □R5.3 □R5.9 □R6.3 □R6.9



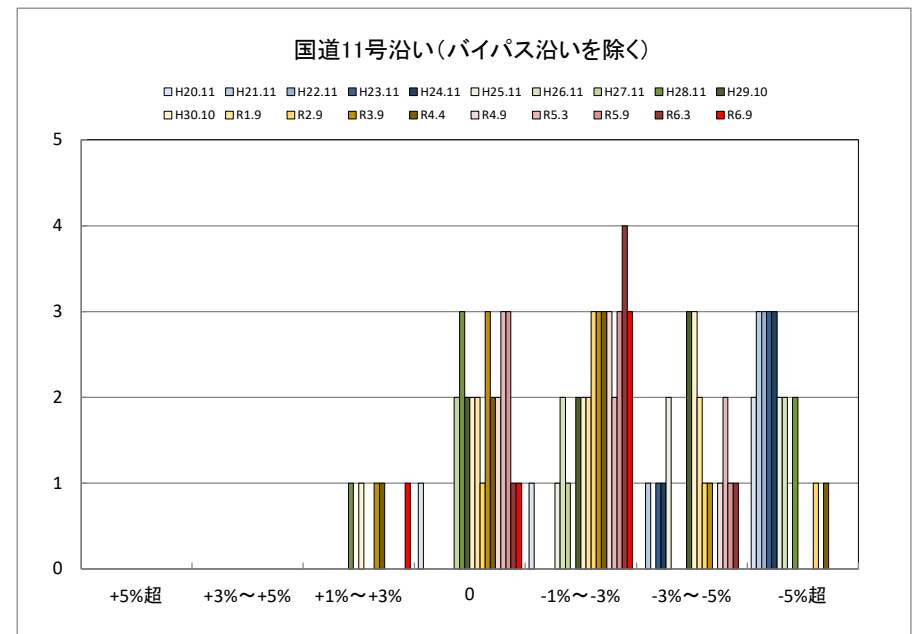
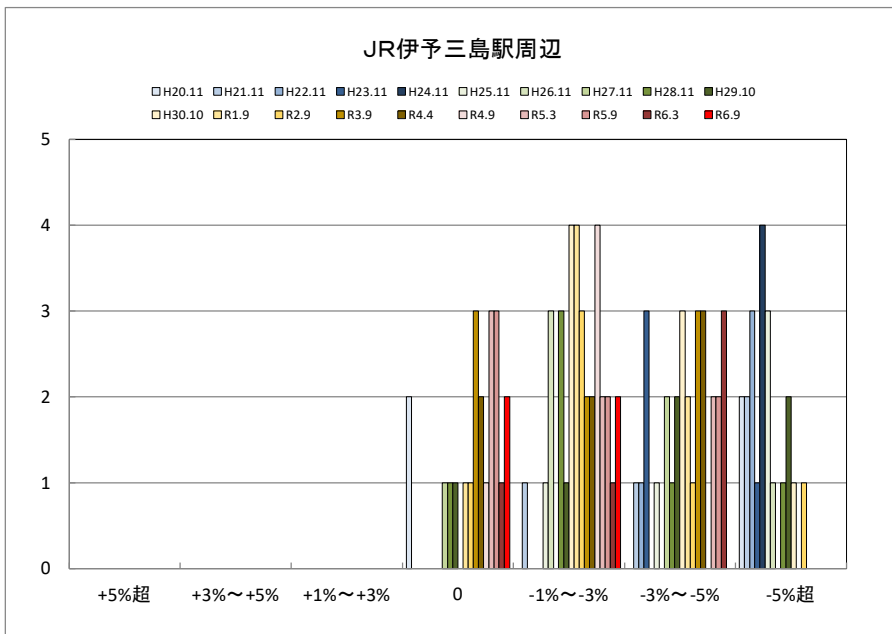
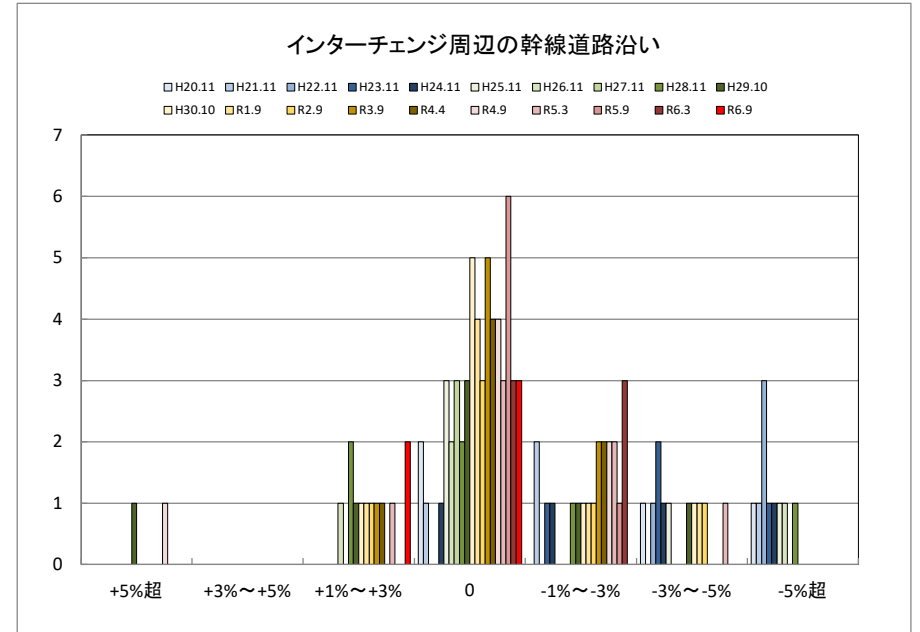
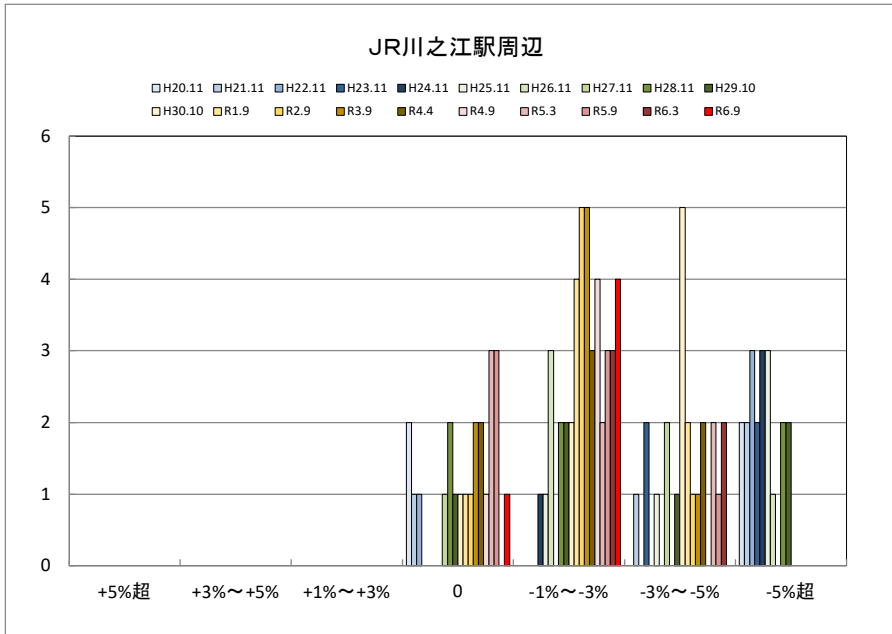
土居町

□H20.11 □H21.11 □H22.11 □H23.11 □H24.11 □H25.11 □H26.11 □H27.11 □H28.11 □H29.10
 □H30.10 □R1.9 □R2.9 □R3.9 □R4.4 □R4.9 □R5.3 □R5.9 □R6.3 □R6.9



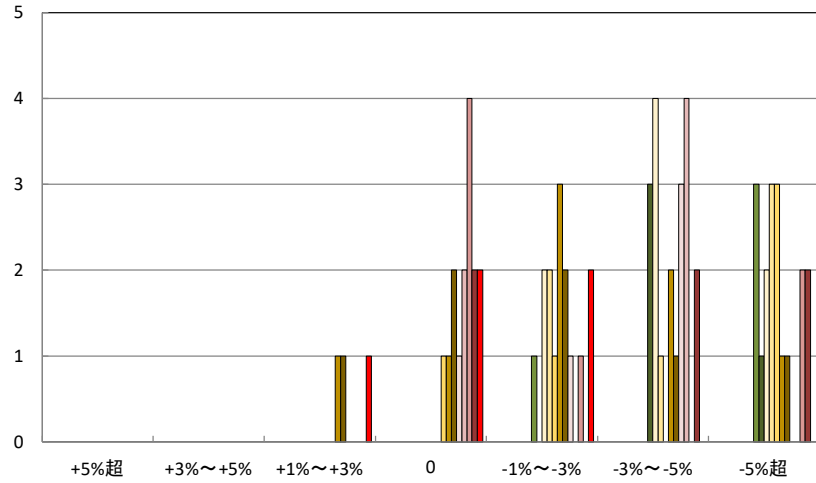
※ 土居町:平成28年から調査実施

○四国中央市商業地(地域別)の過去6ヶ月間の地価動向について



土居町

□ H20.11 □ H21.11 □ H22.11 □ H23.11 ■ H24.11 □ H25.11 □ H26.11 □ H27.11 ■ H28.11 ■ H29.10
 □ H30.10 □ R1.9 □ R2.9 □ R3.9 ■ R4.4 □ R4.9 □ R5.3 □ R5.9 ■ R6.3 ■ R6.9



※ 土居町:平成28年から調査実施